

LOVE CHESTER

MAGAZINE



ROTARY
MEMBERS

NOVEMBER 2022
Issue 67

Monthly Business & Community magazine delivered in & around Chester



love-chester.com



ONCE YOU HAVE READ ME PLEASE PASS ME ON TO SOMEONE ELSE!

Call: **01244 555 244** or email: **info@love-chester.com**



Relive Physiotherapy
Gateway to Health



Chester's #1 Physiotherapy Services

Individually Tailored Expert Physiotherapy

Sports Massage



We provide award-winning Physiotherapy services, with weekend and late evening appointments, as well as Home Visits

WHAT WE OFFER



Acupuncture



Shockwave Therapy



Injection Therapy

CONTACT US

01244 630 750

hello@relivephysiotherapy.co.uk



LIFE TIME LOVE

**OUR DESIGNERS CAN WORK WITH YOU
TO CREATE A ONE-OF-A-KIND DESIGN
THAT'S TREASURED FOREVER.**

**MOREOVER, VOW OFFERS YOU A FREE-OF-CHARGE CARE
SERVICE FOR YOUR VOW JEWELLERY ONCE EVERY YEAR.**

CARE SERVICE INCLUDES;

**• COMPLIMENTARY RESIZING • ANNUAL SHINE •
CLEANING & POLISHING • RHODIUM**

CHOOSE with CONFIDENCE

Our engagement rings designed with
diamonds sustainably created by VOW
Jewellery come with a lifetime
warranty.

VOW
JEWELLERY

17 Bridge St Row East, CH1 1NW Chester,
United Kingdom
+44 1244 322225
vowjewellery.co.uk

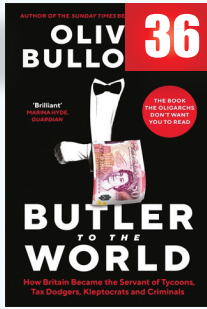
WHAT'S IN THIS MONTHS LOVE CHESTER MAGAZINE



10



20



36



35



40

This month
in history

Chester
Zoo

Book Review
by
John Morris

Puzzle page

Chester
Rambling
Club

Love Chester The Local Magazine for Businesses in and around Cheshire.

Community page	6
Do You Know?	8
This month in history	10-11
Charity page - Chester Zoo	14
Horoscopes for November (NEW)	16
Chester Zoo new arrivals	20-21
Community page - PCC	16
Charity page - B.I.R.D.	26
Police Crime Commissioner	28
Community page - Round Table	30
Charity page - The Joshua Tree	32
Short story series - Pablo & Billy	34
Puzzle Corner	35
Book review by John Morris	36-38
Chester Rambling & Hill Walking Club	40
What's on - Arley Hall	42

Cover Photo: Chester Weir - courtesy of Cheshire based commercial photographer Bernard Rose, wall art photograph available for sale from

www.photo4me.com/brpimages



Dear Friends,
The beautiful autumn colours are getting stronger now - that means the wind is due soon to blow them all off - so let us enjoy them whilst

they last!

This year has flown by, to think we are approaching December and all that it entails, so a busy month for everyone, enjoy the season!

Don't forget to tell our advertisers you saw them in Love Chester!

If you are in business and want to attract new customers, why not advertise with us and/or in our Love Wirral or Love Wrexham magazines, we offer affordable advertising in our popular magazines - contact details are on our front page.

All our magazines are available online - as well as the answers to our puzzle page :))

Best Wishes

Maxine & Mike

Circulation of this FREE magazine is distributed to Chester and its surrounding villages.

Love Chester Magazine Limited Registered Office: 12 The Chase, Wirral, CH63 0EX

Company Number: 10588054

"Love Chester" is produced by an independent organisation, which is not connected to any other organisation, publication or groups.

All material is copyrighted and no part of this publication may be reproduced or transmitted without the written permission of the copyright holder.

4

Please note that we do not endorse any products or services of any advertisers. All advertisements and their content are accepted in good faith. Responsibility for copyright and the accuracy of the information provided lies with the advertiser.

cheshire joinery *services ltd*

Bespoke hardwood windows and doors



Autumn offer
Kiln dried Hardwood Fire Briquettes
10KG Bag £5
10 Bags for £30
20 Bags for £40
Hardwood off cuts also available



Unit 1b, Barrowmore Estate, Gt Barrow, CH3 7JA

www.cheshirejoineryservices.com

info@cheshirejoineryservices.com

Tel: 01829 741751



Someday Soon

Poem by John Fowler

Someday soon we'll hear good news, and we'll be dancing in the street.
 The cost of living will be so low, we'll turn up the heat.
 We'll switch the TV on, and what they say, will be so good.
 Let's hope it happens soon, so we can enjoy our Christmas pud.
 Politicians promise this and that, it's really all hot air.
 Do they know the realities, and do they really care?
 BOE, and IMF, I'm afraid it's all Greek to me,
 Is the country in recession, and are we all at sea?
 Strikes, war, and Covid, no wonder we've got the blues.
 But after winter comes the spring, someday we'll hear good news.



Chester Plumbing & Heating

01244 748 086

Powered By **RIGHTIO**

COMPETITIVE RATES

- ✓ Fast Response
- ✓ All Work Guaranteed
- ✓ Flexible Appointment Times

CALL US ON
01244 748 086

**WE COVER THE
SURROUNDING AREAS**

OUR SERVICES

- ✓ Boiler Breakdowns
- ✓ Boiler Servicing
- ✓ Radiators & Pipes
- ✓ Tanks & Cylinders
- ✓ Toilets & Taps
- ✓ Leaks & Bursts
- ✓ Showers
- ✓ Clearing Blockages
- ✓ Pipework Replacement
- ✓ Gas Safe Certified

12 Month

guarantee
on labour!

Excludes blockages

OAP

Discount
Speak to
us today!

1-2 Hour

Response
time!



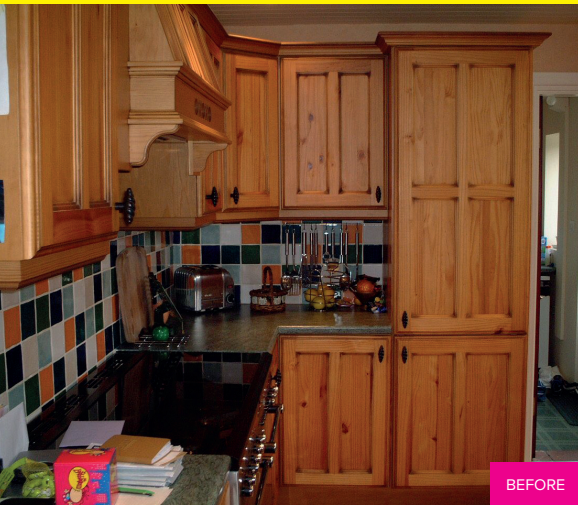
650921

AN AFFORDABLE STUNNING
MAKEOVER THAT WILL SIMPLY...

TRANSFORM **YOUR** KITCHEN

The Kitchen Makeover Specialists

SALE NOW ON CALL TODAY



BEFORE AFTER



No need to empty cupboards
Most kitchens completed in a day.

No mess, no fuss.

All doors made to measure.

Choose from Vinyl, acrylic
and solid wood doors.

CALL FOR A FREE QUOTATION

Ask about our quartz overlay.

Why replace your worktops when this
unique quartz overlay simply fits over
your existing surface.

Hygienic, easy to care for, scratch
resistant, easily installed, heat
resistant & timeless.

WE OFFER FREE SURVEY, DESIGN & QUOTES

www.transformyourkitchen.net

A Family Run Firm With 25 Years Experience

Call for a FREE quotation on

01244 794 102

DO YOU KNOW?

1. The smell of chocolate increases theta brain waves, which triggers relaxation.



2. Cucumbers are fruits.

3. Gold has been discovered on every continent on earth.

4. Cuddling triggers the same neurological reaction as taking painkillers.

5. The moon is moving away from us by 3.78 cm (1.48 in) a year.

6. Your heartbeat changes and mimics the music you listen to.

7. Lack of sleep can cause weight gain of 2 pounds (0.9 kg) in under a week.

8. The type of music you listen to affects the way you perceive the world.



9. Researchers are debating on adding Internet addiction to the list of mental disorders.

10. Almost a third of San Francisco's air pollution comes from China.

11. Amsterdam pays alcoholics in beer to clean streets: 5 cans of beer for a day's work, plus €10 and tobacco.

12. Leo Da Vinci used to buy caged animals at the market just to set them free.

13. Research shows that drama classes are particularly useful for improving the social skills of autistic children.



14. When the D-Day forces landed, Hitler was asleep. None of his generals dared send re-enforcements without his permission, and no-one dared wake him.

15. The estimated number of dinosaur species that existed in the Mesozoic era is between 1,543 and 2,468 species.

16. Humans and dogs first became best friends 30,000 years ago.

17. Bruce Lee was so fast, they actually had to run his films slower so that you could see his moves.



18. Eskimos use refrigerators to stop their food from freezing.

19. Giraffes make no sound. Not because they can't, but they choose not to.

20. Oxford University Is Older Than the Aztecs.

21. An average person produces about 25,000 quarts of saliva in a lifetime, enough to fill two swimming pools.

22. A Marijuana-derived compound forces cancer cells to freeze and prevents them from spreading.

23. Men with shaved heads are perceived as an inch taller and 13% stronger than men with hair.



24. Our galaxy probably contains at least 2 billion planets like Earth.

25. Sylvester Stallone was so poor, he had to sell his dog for \$50. A week later, he sold the script for Rocky and bought him back for \$3,000.

26. Picasso burned most of his early work to keep his apartment warm because he was poor.

27. The world's first labour strike was held on the site of a pyramid.

28. Peanut oil can be processed to produce glycerol, which can be used to make nitroglycerine, an explosive liquid used in dynamite.

29. 1 Can of Soda a day increases your chances of getting type 2 diabetes by 22%.

30. Atomic bomb tests were a major tourist attraction in Las Vegas during the 1950s.



Magnificent care in a magnificent setting

Belong Chester provides high quality 24-hour support and world class dementia facilities in a vibrant community and is a stunning example of how advanced design and very high standards of care can provide a new quality of life for older people.

JOIN
THE TEAM
VARIOUS
OPPORTUNITIES



Specialist dementia and nursing care



Small households create a homely setting



Free Admiral Nurse service for customers and their family



Modern apartments enabling people to live independently with support



Vibrant facilities including Bistro (now open to the public), Salon and more



Gym with specialist equipment to improve wellbeing



Specialist day care service offering a range of meaningful experiences



Intergenerational nursery offers shared learning experiences

Please get in touch for further information or to book a personal tour.

☎ 01244 470570

✉ enquiries@belong.org.uk

🌐 www.belong.org.uk



Belong 

Your life, your pace, your way.

Belong Chester | 36 City Road, Chester, Cheshire CH1 3AD



THIS MONTH'S HISTORY

This feature each month will give interesting facts from years gone by. See what you remember that happened in your lifetime.

THIS DAY IN HISTORY FOR THE MONTH OF NOVEMBER

4th November 2012

Former church minister Reg Dean from Wirksworth in Derbyshire, (born in Tunstall, Staffordshire) who was Britain's oldest man, celebrated his 110th birthday.

He attributed his longevity to a 'mysterious medicine' given to him as a youth by a doctor in Bombay just before the First World War. He was told "if you drink this you will live forever". He also attributed his age to being 'a lazy-bones'.

He passed away on 5th January 2013, aged 110 years and 63 days.



11th November 1987

A painting by Vincent Van Gogh was sold for \$49m (£27m) - a world record for a work of art at the time.

The final price was more than twice what the painting, called Irises, had been expected to reach.

The anonymous purchaser also paid a 10% commission fee to the auction house, Sotheby's, bringing the total to \$53.9m (£29.5m).

The sale was also accomplished in what may have been a record time given the figures involved - the bidding rose from the starting point of \$15m (£8.5m) to reach the final sale price in less than two minutes.

Irises depicts the garden of the Saint-Remy mental asylum in France where Van Gogh was a patient.

It was painted in 1889, a few months before the artist committed suicide aged 37.



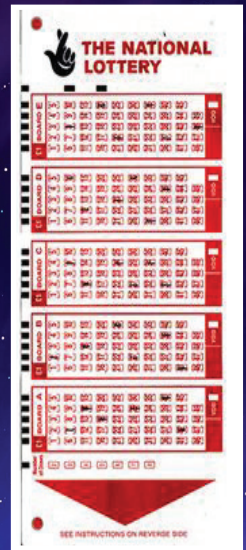
19th November 1994

Britain's first National Lottery draw took place in an hour long programme, hosted by Noel Edmunds.

It had a jackpot of £7M and was shown live on BBC television.

A £1 ticket gave a one in 14-million chance of correctly guessing the winning six out of 49 numbers.

On the 10th of October 2015, the National Lottery increased the numbers from 49 to 59.



25th November 1952

The play, *The Mousetrap* by Agatha Christie, opened in London, at the Ambassador's Theatre where it remained for 21 years.

By Saturday 12th April 1958 it had become the longest running production of any kind in the history of British Theatre.



A murder mystery play by Agatha Christie. *The Mousetrap* ran continuously until 16 March 2020, when the stage performances had to be temporarily discontinued during the COVID-19 pandemic. It then re-opened on 17 May 2021. The longest-running West End show, it has by far the longest run of any play in the world, with its 27,500th performance taking place on 18 September 2018.

A "Whodunit", the play has a twist ending, which the audience are traditionally asked not to reveal after leaving the theatre. There are eight members of the cast, and by 2012 more than 400 actors and actresses had played the roles. Richard Attenborough was the original Detective Sergeant Trotter, and his wife, Sheila Sim, the first Mollie Ralston – owner of Monkswell Manor guesthouse. However since then few of the cast have been headliners, with Stephen Moss in *The Guardian* writing, "the play and its author are the stars".

Anderson Funeral Directors

Our family strive to provide the best for your family

A Family Run Funeral Directors

Anderson Funeral Directors is a true family run concern, we are proud to care for the communities of Ellesmere Port, Chester, Wirral and surrounding areas. We are here to help in your time of need and you can be sure that when dealing with the Anderson family you are in safe and caring hands. We pride ourselves in our commitment to help families truly express and honour their loved ones personality, whether that be through their individual choice of vehicle or a lasting tribute with an individually designed order of service booklet.



0151 357 2671

Anderson Funeral Directors
11 Chester Road off Whitby Road
Whitby Village, Ellesmere Port, CH65 9BD
(Near Vale Court Care Home)
catherine@andersonfd.co.uk

www.andersonfd.co.uk

Planning Ahead

Why not telephone our office to discuss a bespoke pre-payment funeral plan from £1995.¹

 Anderson Funeral Directors
5.0 ★★★★★ 57 Google reviews

¹ Does not include third party disbursement costs.



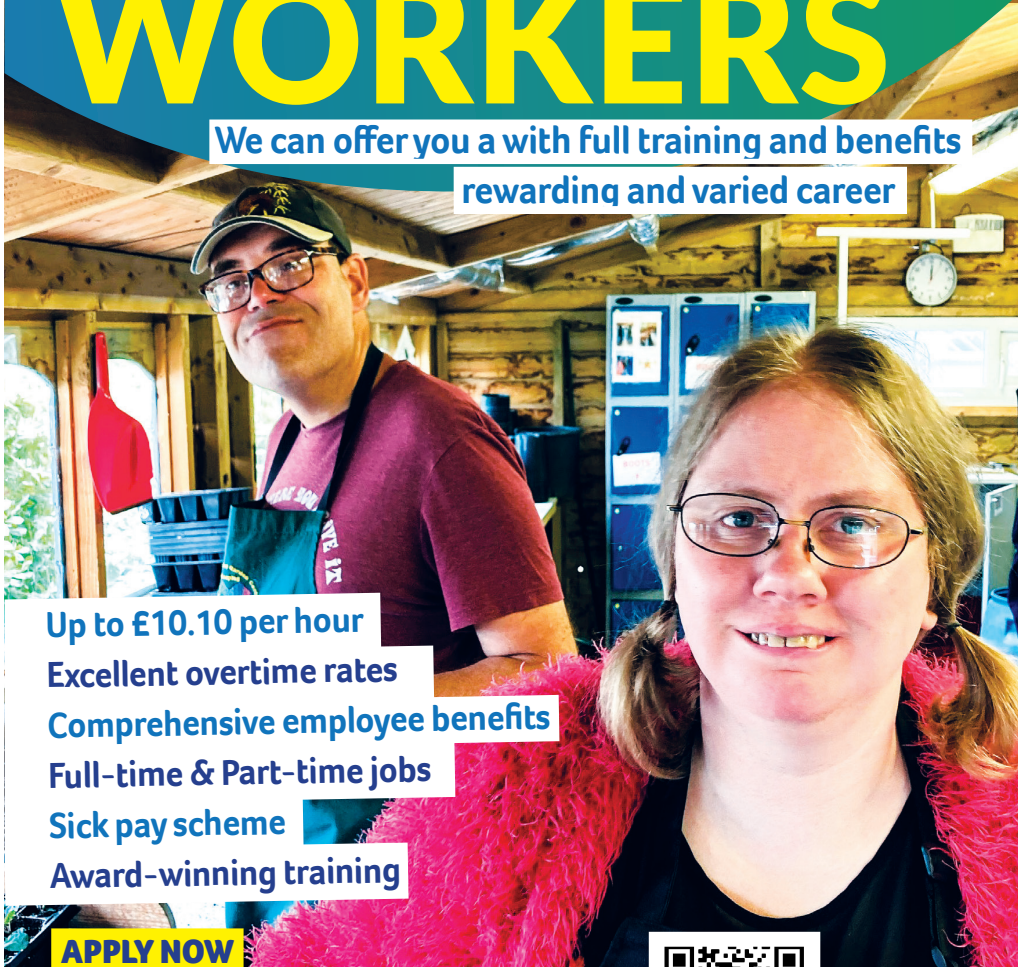
autism_together autismtogetheruk Charity No: 1007878



We are hiring!

SUPPORT WORKERS

We can offer you a with full training and benefits
rewarding and varied career



- Up to £10.10 per hour
- Excellent overtime rates
- Comprehensive employee benefits
- Full-time & Part-time jobs
- Sick pay scheme
- Award-winning training

APPLY NOW

0151 482 3121

WWW.AUTISMTOGETHER.CO.UK



Scan the QR
code to go
straight
to our jobs
page



Chester Zoo to give away 5,000 FREE tickets to charities and community groups

5,000 free tickets to visit Chester Zoo have been released for charities, not-for-profits and community groups in the UK.

The conservation zoo's Charity Connections Scheme will see 5,000 people from a range of low-come groups visit the zoo, for free, and learn about its mission to prevent extinction.

Tickets are available to a range of charities, not-for-profit organisations and community groups that help support people who may have faced barrier to visiting the zoo previously.

Conservationists say that the scheme will help connect people from all walks of life with the natural world.

Nicola Buckley, Conservation Education & Engagement Manager at Chester Zoo, said: "We're delighted to launch our Charity Connections Scheme and encourage charities, not-for-profits or community groups that help support people who face barriers in their life, which may have previously stopped them from visiting our fantastic zoo, to apply for free tickets.

"If your organisation works with young people, those with additional needs or disabilities, minority ethnic groups or low-income families with financial difficulties, we want to connect those people with nature, too.

"By visiting our 128 acre zoo and the 27,000 highly threatened animals that call it home, we want people to feel empowered to live sustainably in their own lives while learning all about our efforts to prevent extinction."

Each organisation or community group can apply for up to 150 free tickets by completing an application form on the zoo's website. Applications will close on 31 October and tickets will be allocated to those who are eligible on a first come first served basis.

Find out more and apply for tickets here: www.chesterzoo.org/corporate-information/corporate-social-responsibility





EVOKITCHEN
COLLECTION

LochAnna
kitchens

CHESTER BRANCH

• Kitchen & Bathroom Showroom •



Warrington Rd, Mickle Trafford, Chester, CH2 4EB

RETAIL KITCHENS AT TRADE PRICES

Our Chester Showroom has a range of stylish and modern kitchens. Whether you are looking for a shaker, gloss or traditional kitchen, we have everything you need for your dream kitchen.

Vallo

Mullan

Devlin

Ellis

“ Upgrade your trade kitchen by integrating LochAnna units to get the designer look without breaking the bank. ”



SCAN HERE



BOOK A FREE APPOINTMENT

Book a free appointment online. Talk about your requirements with one of our expert designers.



APPLY FOR KITCHEN FINANCE

Apply for finance with our partners Ideal 4 Finance. Just a quick four step loan application process.

To view our full kitchen range online

T&C's: Prices subject to VAT. Prices subject to price increases from suppliers. Management reserves the right to remove or amend this offer at anytime. Images are for illustrative purposes only. Reg No. 2412526 England.

01244 300 287 | chester@beesleyandfildes.co.uk | www.beesleyandfildes.co.uk

HOROSCOPES FOR NOVEMBER

BY JAMES GRIFFITHS

Capricorn

It's a wonderful time of year to join networks that share your interests and hobbies. You are feeling motivated.

Sagittarius

Excellent time to develop your intuition and your spirituality. Your dreams are quite busy right now. It's a significant time.

Aquarius

Fascinating breakthroughs are happening right now, feeling very focused and determined. You will be winning praise for your efforts.

Scorpio

The sun is in your life now giving you a sense of vitality, and assurance. You feel inspired and prepared to take on the upcoming year!

Pisces

Transformation is the key, and you're prepared to make some changes in your life. Making connections with those who want to invest in you.

Libra

Your focus is on your income and budget, as well as your sense of security and comfort which is highlighted.

Aries

Financial issues and money you share, dominate your thoughts. Putting it off won't make them go away.

Virgo

For you, this is a busy time of year. Conversations and plans that had to be postponed are now being carried out.

Taurus

Relationships are lit making it an exciting time for you to connect with others. The connections you make are now significant.

Leo

You are in a reflective mood, thinking about your childhood home and your origins.

Gemini

Now is a fantastic moment to make changes that will enhance your happiness. New projects start.

Cancer

New romance or strengthening of an existing one will develop. The start of creative endeavours will be fascinating!





CAN WE CLEAN YOUR ROOF?



Call us today
07597 148 447

CLEANING SOLUTIONS

Total Glean is an Exterior Cleaning Specialist



✓ ROOF CLEANING



✓ TARMAC RESTORATION



✓ RENDER CLEANING



✓ DRIVEWAY CLEANING



✓ UPVC CLEANING



✓ PATIO RESTORATION

ABOUT US

We are experts in exterior cleaning for both residential and commercial buildings. We offer a wide range of services such as pressure washing, driveway and patio cleaning, gutter and roof cleaning, render cleaning, and much more. We are Alcumus Safe Contractor Approved so you can be assured we are professional, trained, and fully insured.

ALLMIGHTY ROOFING

Your Local Flat Roofing Specialists

Complete Re-Roofs/Commercial Roofing/ Facias & Guttering



Firestone Flat Roofing System

- ✓ 20 year guarantee
- ✓ Superior durability
- ✓ Seamless sheets in one piece
- ✓ Very low life-cycle cost
- ✓ Flame-free & easy installation
- ✓ High flexibility & elongation
- ✓ Environmentally friendly



Meet the owner

- 15 Years Experience
- Level 3 Site Carpentry NVQ
- Level 1 Construction NVQ
- Level 2 Slate & Tiling NVQ
- Licensed Firestone Contractor
- Fully Insured



TRUSTMARK
Government Endorsed Quality

Checkatrade.com
Proud members of
Where reputation matters

Call 01244 637121
www.allmightyroofing.co.uk



dental solutions

We **LOVE** to make you **SMILE...**

BESPOKE DENTURES

Natural looking dentures beautifully created just for you
We believe in treating our clients with dignity and discretion

IMPLANT RETAINED DENTURES

Many patients who have chosen to have implants, report they are happy and comfortable for the first time since the loss of their natural teeth.

WHAT OUR CLIENTS SAY

“The moment I met Philip and his team I knew I was in safe hands. Everyone was patient, caring and professional.”

Doreen - Wirral



Smile we're local
Junction 3 M53

CALL US TODAY
0151 678 9833
PLEASE CALL US FOR
A FREE CONSULTATION

Dental Solutions Denture Clinic
399 Upton Road Prenton Wirral, CH43 9SE
www.dentalsolutions.co



OUR ZOO

What's happening at Chester Zoo.

A rare trio of fossa triplets have emerged from their den after being born at Chester Zoo.



Tiny triplets! Three fossa pups have emerged from their den at Chester Zoo – the first of their kind to be born at the conservation charity.

The 12-week-old pups, who have arrived to parents Shala and Isalo are only now beginning to venture outside after remaining tucked away for their first few weeks of life.

The trio are a “huge cause for celebration” as they are the first of their kind to ever be born at the zoo in its 91-year history.

Conservationists have released heart-warming footage of the delightful pups exploring and playing together in their habitat, and say they will soon be choosing names for the trio which have been revealed as a male and two females.

A distant relative of the mongoose, the fossa is a slender, cat-like mammal that's only found in the forests of Madagascar. The rare carnivore is equipped with a long tail that helps it balance when leaping amongst the tree branches, as well as large eyes that help it to see better at night when hunting for prey such as lemurs, wild pigs and mice.

The fossa is highly threatened as a result of widespread habitat loss in Madagascar. Scientists report that the island has already lost up to 90% of its forests, which means that many species are now on the very brink of extinction.

The world's authority on the state of nature, The International Union for the Conservation of Nature (IUCN), lists the fossa as vulnerable to extinction, with recent estimates suggesting as few as 2,600 remain in the wild.

Rachael Boatwright, Zookeeper at the conservation zoo, said:

“The fossa is one of the world’s most elusive carnivores and little is currently known about how they live in the wild. The birth of Shala’s triplets is therefore a huge cause for celebration – not only are they the first pups to ever be born at our zoo, but their arrival into the endangered species breeding programme will



To save Chester Zoo head to: www.chesterzoo.org/saveourzoo

allow us to discover more about their behaviours - from tiny pups all the way to adults.

Mike Jordan, Director of Animals and Plants, added:

“These three fossa pups are incredibly important to the future of the species and the safety-net population found in conservation zoos like ours, which has become vitally important given the huge amount of deforestation in Madagascar.

“In the wake of such dramatic devastation on the island, our zoo experts have, for more than a decade, been working with project partners Madagasikara Voakajy on the ground to help save this unique paradise and the thousands of animals that cannot be found anywhere else on the planet. These three little pups give us hope that we can protect this species from being lost altogether.”

Conservationists from Chester Zoo have been protecting habitats in Madagascar for more than 10 years. In 2015, the Malagasy government established The Mangabe New Protected Area, co-managed by the zoo’s field partner Madagasikara Voakajy and the communities that live in the Mangabe region, providing a safe haven for thousands of species living on the island, including the fossa.



“This is Shala’s first litter, and while it’s still early days, her three pups are doing great and are now full of confidence as they learn to climb trees and explore together, all under the watchful eye of mum, of course.”

In the forests of Madagascar, the fossa moves swiftly through trees, so much so that conservationists have trouble researching and observing them in the wild. Experts working with the species at the zoo hope to gain valuable insights into their behaviours – all while fighting to protect their forest home.



worldpay
from FIS

GRAB A SLICE OF PAYMENTS EXPERTISE

#WhereGreatnessHappens



Great local businesses like yours live around every corner, and we champion you by powering your payments. With that part of your daily tasks taken care of, you're free to focus on everything else that makes your business great.



PAYMENT EXPERTISE

Extensive experience of navigating payment complexity



MANAGE FUNDS FLOW

Flexible settlement options for access to funds



SECURITY AND TRUST

Robust protection tools that can help tackle fraud



PAYMENT EFFICIENCIES

Streamline how you take, make and manage payments



CONSUMER EXPERIENCE

Simple payments with more ways to pay



MODERN PERFORMANCE

High-performance payment solutions for now and next

Accept different payment types



DISCOVER



Get in touch for a free quote

Laura Sharples

Call me on

07867929551

or email me at

laura.sharples@fisglobal.com



Supporting Mid-Cheshire Food Bank

We'll donate £10 for every car, home or van insurance quote we do in our Northwich branch. Quote 'CHESHIREFOODBANK'. Terms & Conditions apply*

18 Witton Street | Northwich | CW9 5EB

01606 537 900

★ Trustpilot  Rated 4.8 out of 5*



Insurance Broker
of the Year

*A-Plan Northwich will donate £10 for every car, home and van insurance policy quoted from 12/09/22 to 30/11/22. Only one quote per product line, i.e. you cannot have multiple quotes for the same vehicle at the same address. Only available through the above branch. A-Plan reserve the right to withdraw this offer at any time. **Trustpilot rating correct as of 12/09/2022. A-Plan Insurance is a trading style of A-Plan Holdings which is authorised and regulated by the Financial Conduct Authority. Registered office: 2 Des Roches Square, Witney, OX28 4LE. Registration number 750484. AP220804

aplan.co.uk/northwich

PURE

CONSERVATORIES

CONSERVATORIES | ORANGERIES | CONSERVATORY ADAPTATIONS

Call us on:
0151 327 8095

BEFORE ROOF INSTALLED



The only system that comes with planning consent. Call us today for a **FREE** quotation.

We are working safely during COVID-19



Transform your conservatory into an all year round living space

**NORTH WEST
No. 1
INSTALLER**



AFTER ROOF INSTALLED

A local family run firm you can trust

FREE EXPERT ADVICE

PURE

CONSERVATORIES

HOME EXTENSIONS | GARDEN ROOMS | REPLACEMENT GLASS

BEFORE



AFTER

- A wide range of tiles and colours
- Lighting & Plastering included
- Upgrade your frames or glass
- Fully trained installation teams



www.pureconservatories.co.uk



We would like to introduce ourselves as your local charity. BIRD based in Ecclestone has been quietly transforming the lives of children and young people with conditions such as autism, dyslexia, dyspraxia, communication and learning difficulties through the therapies it offers and the vital support we provide to parents and family members.

BIRD treats people of all ages; many of the adults who seek our support have experienced a stroke or acquired brain injury. For most of the people BIRD has helped, it was previously thought that no further improvement was possible, yet over 90% of everyone coming to BIRD shows a marked improvement.

This year we are celebrating 40 years of helping children and adults in our local area. We rely upon voluntary donations for our vital work to continue and we are grateful to our local community who raise funds, support our events or volunteer with us.

If you would like to know more about our work email admin@birdcharity.org.uk, see our website www.birdcharity.org.uk or call 01244 678629.

If you would like to join us at one of our Christmas events, we have:-

- a 'Shopping & Lifestyle Evening' at the Grosvenor Pulford Hotel & Spa on the **3rd November**,
- a fun-filled 'Christmas Bingo' evening at Ecclestone Village Hall on the **30th November**
- and our very special carol concert on Thursday, the **15th December**.

We would love you to join us please do get in touch.





Tel: 0151 336 6925



BUILDING

We understand the importance of achieving a customers vision and needs. Every project is completed to the highest quality and customer satisfaction is imperative. We aim to give customers confidence that we will keep disruption to a minimum and always work within a safe, clean and tidy environment.

GLAZING

We are professional installers of windows, doors, bi folds and frameless glass extensions. Elliott Build & Glaze Ltd is a Fensa registered company and we are able to provide a 10 year insurance backed guarantee.

PLANNING

From first contact with the customer to completion of the project, Elliott Build & Glaze Ltd can provide all services required to meet your needs, from full architectural design to the final fitting of the flooring. We aim make this experience as enjoyable and stress free as possible.

A family run business which has been built on recommendation



CUSTOMER RECOMMENDATIONS

Farrar - Greasby

"Both Alison and I would like you to pass on our thanks and best wishes to all of those involved at Elliott Build & Glaze Ltd in this project, as they have been very attentive and professional, as well as personable, throughout the project."

Forshaw/Murray - Bebington

We are very happy with all the work and the high standard that was attained.

O'Mally - Meols

"Scott and the team certainly gave us best in class service whilst they worked on our extension, kitchen and bathrooms. They kept us informed all the way and worked around our diaries to deliver the programme on time. We highly recommend them to anyone.

www.elliottbuildandglazeld.co.uk



Email: elliottbuildandglazeld@live.com

Elliott Build & Glaze Ltd is a trading name of S R Elliott Build & Glaze Ltd.





Community



John Dwyer

Police & Crime
Commissioner
for Cheshire

**Exploited
young people
don't always
look and act
vulnerable**

Look closer

If something doesn't feel right, it may not be.

Young people can be exploited anywhere
and may be most visible in public spaces.



#LookCloser to spot signs of child exploitation, urges Commissioner

Police and Crime Commissioner for Cheshire, John Dwyer, has joined the call urging members of the public to #LookCloser and spot signs of child exploitation.

The #LookCloser campaign, organised by charity The Children's Society and supported by British Transport Police and National Police Chiefs' Council (NPCC), aims to raise awareness surrounding child exploitation including the different forms that child exploitation can take, the signs to look out for and how to report it.

Police and Crime Commissioner for Cheshire, John Dwyer, said:

"Child exploitation has no place in our society and raising awareness for the signs of this type of crime is so important. The tactics used by criminals can be hard to spot, so the #LookCloser campaign is crucial for educating people on what to look out for.

"A priority in my Police and Crime Plan is to protect vulnerable and at-risk people, including children and young people who can be some of the most vulnerable members of our society. I believe that by working together we can help to protect those who are most at-risk to this type of crime and bring those responsible to justice."

Signs of child exploitation

Is a young person:

Travelling alone, particularly in school hours, late at night or frequently?

Looking lost or in unfamiliar surroundings?

Anxious, frightened, angry or displaying other behaviours that make you worried about them?

In possession of more than one phone?

Carrying lots of cash?

Potentially under the influence of drugs or alcohol?

Being instructed or controlled by another individual?

Accompanied by individuals who are older than them?

Seen begging in a public space?

If you have any concerns, you can report it to the police on 101 or 999 in an emergency. Alternatively, you can contact the British Transport Police on 61016. You can also make an anonymous report through Crimestoppers on 0800 555 111.

There is more information available about the #LookCloser campaign on

28 **the Children's Society website: www.childrenssociety.org.uk**



**From
£895***
for a fully
fitted electric
garage door.

Gotta get a Garolla.



Garolla garage doors are expertly made to measure in our own UK factories, they're strong and solidly built. The electric Garolla door rolls up vertically, taking up only 8 inches inside your garage, maximising valuable space. Our expert local installers will fit your new door and they'll take away the old one too, so there's no mess.

Give us a call today and we'll come and measure up **FREE** of charge.

GAROLLA
ROLLER
SHUTTER
DOORS

www.garolla.co.uk

CALL US TODAY ON:

01244 960 169

MOBILE:

07537 149 128

LINES OPEN 7 DAYS A WEEK

*Offer valid for openings up to 2.4m wide & including 2 remote controls, 55mm white slats, internal manual override.



**Do you see me?
So do your clients!**

Lets get businesses back on track. We have great offers for new advertisers.

Get in touch with us.
Call 01244 555244 or visit
our website love-chester.com

**LOVE
CHESTER** MAGAZINE

CHESTER ADULT ART CLASSES

Every Thursday - 10.15am to 12.15pm
St Mary's Handbridge Centre CH4 7JS
from £17 including drinks



**Beginners
&
Improvers
welcome**

- Get expert help and make new friends
- Focus on a skill of your choice

Join the course any time
Taster classes available
Taught by an experienced artist

text/call Helen 07716 185 464



ELLESMERE PORT ROUND TABLE SANTA FLOAT 2022

Thursday 1st December – Ellesmere Port Light Padre – 4.00pm to 6.30pm

Start & Finish Point: Ellesmere Port Civic Hall

Route: Civic Hall Only

Friday 2nd December – Little Sutton - 6.00pm to 9.00pm

Start & Finish Point: Red Lion Pub Car Park

Route: Red Lion Lane & Surrounding Area

Monday 5th December - Overpool - 6.00pm to 8.30pm

Start & Finish Point: The Wheatsheaf Pub Car Park

Route: Princes Road & Surrounding Area

Wednesday 7th December – Hope Farm Road - 6.00pm to 8.30pm

Start & Finish Point: The Straw Hat Pub Car Park

Route: Hope Farm Road & Surrounding Area

Friday 9th December – Little Sutton - 6.00pm to 9.00pm

Start & Finish Point: Royal British Legion Car Park

Route: Parklands & Surrounding Area

Monday 12th December – Westminster – 6.00pm – 8.30pm

Start & Finish Point: Ellesmere Port Conservative Club Car Park

Route: Westminster Road & Surrounding Area

Wednesday 14th December – Stanney - 6.00pm to 8.30pm

Start & Finish Point: The Cat Pub Car Park

Route: Wolverham Road & Surrounding Area

Friday 16th December — Little Sutton - 6.00pm to 9.00pm

Start & Finish Point: The Travellers Rest Pub Car Park

Route: Weatherby Road & Surrounding Area

Monday 19th December – Overpool - 6.00pm to 8.30pm

Start & Finish Point: The Green Oak Farm Pub Car Park

Route: Rossmore Road & Surrounding Area

Wednesday 21st December – Whitby - 6.00pm to 8.30pm

Start & Finish Point: The Woodlands Pub Car Park

Route: Underwood Road & Surrounding Area

Friday 23rd December – Childer Thorton - 6.00pm to 8.00pm

Start & Finish Point: The White Lion Pub Car Park

Route: Childer Thorton/Hooton & Surrounding Area



All dates and times are subject to change without notice, please check for the most up to date information about the Santa Float on - our Facebook Page Ellesmere Port Round Table

www.facebook.com/ellesmereportroundtable

All funds raised are for the Ellesmere Port Round Table Charitable Trust Fund - Registered Charity Number: 1186607

Unit 12 Coalbrookdale Road
Clayhill Industrial Park,
Neston
CH64 3UG

✔ Free Quote ✔ Credit / Debit cards accepted

- General Body Repairs
- Dents, Scuffs & Scratches
- Wheel Refurbishment
- Wheel Colour Changes
- Brake Calipers
- Full Vehicle Colour Changes
- Roll Cage Painting



5.0 ★★★★★ Google reviews



@j.c_paint



jc.paintuk@gmail.com



07891562910



Friendly? Single? Want to meet and keep new friends?

Do you sometimes wish for a better social life?

If so, come and join us, where you can meet and make a new circle of friends, and enjoy good companionship. We meet every Wednesday at 7.30pm at various locations where there is good car parking, and a bar with a nice relaxed atmosphere.

Members organise various social events including meals out each Saturday evening, theatre visits and many other activities.

Our group of like minded unattached people enjoy getting out and about, and are happy to consider suggestions for trips and outings from all members.

Newcomers will be made most welcome. If you would prefer, we can arrange to meet you at the door.

For more information ring Brian on 0151 6481516, or Eileen On 01244 661873



THE JOSHUA TREE

SUPPORTING FAMILIES AFFECTED
BY CHILDHOOD CANCERS

Josh makes great strides in support of Childhood Cancer Awareness Month

Josh Butterworth, from Hartford, was a normal 13-year-old football mad teenager when he was diagnosed with Leukaemia in earlier this year. A student at Hartford High School, Josh wasn't going to be deterred by his diagnosis and set out to fundraise for local children's cancer charity The Joshua Tree.

In the last four months Josh has courageously endured 15 bone marrow aspirates and lumbar punctures, 64 rounds of chemo/immunotherapy following which he suffered a stroke induced by the toxic chemotherapy drugs. The list doesn't end there, he continued his treatment with 13 blood/platelet transfusions, 14 MRI/CT scans and spent 49 nights in hospital away from his family and friends. Not to mention the steroid and antibiotic tablets he has had to take during his three years of treatment to help cure him of cancer.



Unphased by all he has had to endure, Josh took on the challenge of walking and cycling 64 miles during September, which marked Childhood Cancer Awareness Month, a mile for every chemo/immunotherapy treatment he has had. Josh has exceeded this milestone and has completed a total of 110 miles.

Smashing his personal target Josh has raised a staggering £5,000 to help support families, like his, affected by a childhood cancer diagnosis.

Danielle Percival Head of Family Support commented "Having witnessed first-hand how a cancer diagnosis can impacted the whole family, what Josh has achieved even whilst facing the toughest time of his 13 years is just incredible. We feel so honoured to be chosen as the charity to benefit from his fabulous efforts and generous donations for this inspiring challenge."

To donate towards Josh's amazing challenge, please donate via The Joshua Tree [Just Giving page](#).



OVER 20 YEARS EXPERIENCE

NGL TARMAC AND DRIVEWAYS
Domestic and Commercial

- **DRIVEWAYS** • **LANDSCAPING**
- **CONCRETE** • **BLOCK PAVING**
- **TARMAC** • **RESIN BONDED GRAVEL**





Day: **07858 576719** Eve's: **01978 843398**
www.ngldriveways.co.uk

Nathan's Tree Surgery

NPTC Qualified
£5 Million Liability Insurance



- **Felling**
- **Pruning**
- **Reducing**
- **Fencing**
- **Dismantling**
- **Hedge**
- **Maintainence**

Services **Call:**
01948 818743
07534077755
 1 Woodcroft, Lacon Street,
 Preses nr. Whitchurch, Shropshire SY132EL

TARVIN LOGS

KILN DRIED LOGS AVAILABLE






SEASONED LOGS - FULL OR HALF LOADS
DUMPY BAGS OR NETS OF KINDLING
FREE LOCAL DELIVERY
07936 148566
www.tarvinlogs.co.uk
CROSS LANES, TARVIN, CHESTER,
CHESHIRE CH3 8HS



Frodsham Gates & Fencing
 are Manufacturers of Quality
 Wooden Boundary Solutions

White Primed Free Standing
 Weddings/Events Picket Fencing

Garden Gates/Driveway Gates/
 Picket Gates & Fencing/
 Feather Edge Panels

Fitting Service - Please Call for Free Quotation

**DESTAL Ltd also offer an export wooden
 case/crate manufacturing and packing service**
 (Picture below is our NEW Urban Fencing)



**11 Europa Court, Dee View Boulevard,
 Chester, CH1 4NP**

Tel: **07725 235 747 / 07725 235 760**
www.frodshamgates.co.uk
 Email: sales@frodshamgates.co.uk



PRE-LUNCH MEETING by John Fowler

"I wish to talk to you about my career, oh, Excellency".

"What do you want to be when or if you grow up, young Billy my lad?" said his Handsomeness in well-educated tones, whilst flashing a perfect set of molars.

"Well, my Lord and Master, I visualise my life ahead of me, to be able to have not one single solitary care in the world. I desire total freedom of the mind to find the real me, and a clear mandate to make pure idleness an art form."

"Blimey, what exactly do you have in mind, Hedgehog Breath", his Exquisiteness retorted in perfect pigeon English.

"I want to be able to live with freedom. Like when I was young I used to be a bit of a hippy."

"Now you need a new hippy." Laughed Pablo.

"I want to be able to do things without any feeling of guilt, like wearing my socks inside out."

"Wow," exclaimed Pablo, sarcastically.

"I want to be able to break wind at management meetings, without creating a big stink."

"I think we'll all be in favour of that."

I want to button my cardigan incorrectly, hang my shirt out my trousers, wear a tie with terrible dinner stains, talk loudly with a big horrible grin, just generally belching, insulting people, and being able to consume large amounts of tea, whilst having a smoke."

"I don't know what you are worried about, you seem to have been practising these skills already. What I would advise is that you have got to learn to crawl more, you little snivelling Toe rag."

"Shall I get off your knee now, Oh Wonderful one? Crawling doesn't come easy to me, but if you want any shelves putting up, furniture moving, desks sorting out, filing, anything at all really, you only have to ask."

"There is one thing, I need you to do now," said Film Star features politely.

"Anything," replied Billy.

"Somebody, it might be more than one person, has been walking their dogs in the area just outside my office, and in their ignorance they have been allowing their precious pets to do their business, without clearing it up. It is a right mess, especially after a few days."

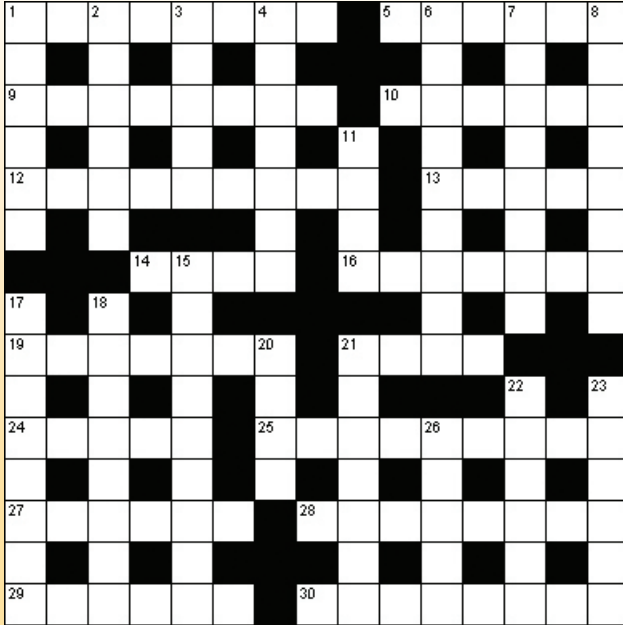
"I think it's that big German Shepherd from across the road."

"No, it's definitely a dog." Replied Pablo. "Would you clear them up for me, and I am afraid if you can't find a shovel, you will have to use your bare hands."

"I am ahead of you, your Gracious, I have already cleared the area, before I made your sandwiches.....and I couldn't find a shovel anywhere!"



PUZZLE CORNER



Down

- 1 A pungent edible root (6)
- 2 Bobbins (6)
- 3 Cause to overturn (5)
- 4 Cleft (7)
- 6 Complaint (9)
- 7 Start (8)
- 8 Syrup made from sugar cane (8)
- 11 Emasculate (4)
- 15 Instances of hard physical labor (9)
- 17 Roofed (8)
- 18 Warships (8)
- 20 Bother (4)
- 21 A plant sometimes used in pies (7)
- 22 Break away (6)
- 23 Express agreement (6)
- 26 Secretes a hormone (5)

Across

- 1 Source of aid or support (8)
- 5 Discrimination against the elderly (6)
- 9 Threshold (8)
- 10 Daughterly (6)
- 12 Card game (9)

- 13 Blood vessels (5)
- 14 Past tense of "To be" (4)
- 16 Small dining room set (7)
- 19 Not himself (7)
- 21 Coral island (4)
- 24 Not daytime (5)
- 25 They import illegally (9)
- 27 Makes skin soft (6)

- 28 Language spoken in Tokyo (8)
- 29 Cease (6)
- 30 Compliant (8)

Sudoku Puzzle

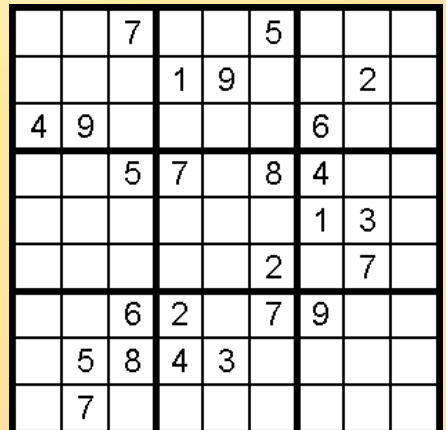
How to play:

The numbers 1 through 9 will appear once only in each row, column, and 3x3 zone. There are 9 such zones in each sudoku grid.

There is only one correct solution to each sudoku. Good luck!

Difficulty level: Medium.

Solutions can be found on our website





Community Support in the Shadow of Money Laundering

A Duty of Care

Author - Peter Hennessy

Publisher - Penguin



The impact of Covid-19, in particular aspects of lockdown, resulting in isolation, social distancing, and separation, generated a renewed awareness of “community responsibility” and a “togetherness” in response to the demands on need, behaviour and personal support to overcome the pandemic. In an all embracing, insightful and critical reflection of lockdown in “terms of social need”, Peter Hennessy, “A Duty of Care” highlights the upsurge of a resolve and motivation to help “meet the needs of others” in terms of decency, dignity, recognition and actual response. The author’s balanced critical analysis is based on interactions and interviews with key political personnel both before Covid(BC) and after Covid(AC). This insightful overview extends awareness of readers regarding the extensive efforts of “good and positive individuals” within communities and workers within institutions such as the NHS, over and above their “expected role”.

The author focuses initially on the period after the Second World War, in particular the General election in 1945 which he describes as one of the “defining ballots” in British history. The rejection of Churchill’s manifesto created the opportunity and need for the new Labour government to respond to the “voice of the people” for social regeneration. The basis for the push for change was the Beveridge Report (1942) which identified the “five giants society had to battle” to promote greater equality for opportunity. The five giants identified to lay the foundation for the “modern welfare state” were “want, disease, ignorance, squalor and idleness”.

As Peter Hennessy highlights, “the new administration had taken on a monumental duty of care of care for the British people”. Welsh politicians such as Jim Griffiths and Aneurin Bevan played crucial roles in tackling social inequality by promoting free secondary education for all, a National Health Service, National insurance, National assistance, Legal Aid, and the Housing Act with the aim of reducing slum housing and creating new towns to take the London “overspill”. This was the 1945 post war “Duty of Care” in terms of addressing slum housing, revitalising education in terms of a new emphasis on technical skills and alleviating the impact of poverty and economic issues impacting upon social inequality, alongside the political need to “defend the Realm”.

The analysis by the author of attempts by successive governments and political leaders to promote “greater social equality” alongside conflicts both within and between groups makes for absorbing reading. Readers may well be tinged with feelings of frustration at knowledge of attitudes, based on “party policy”, restricting the effectiveness of policies followed. The sections on “Safe in Her Hands” and the “Brexit Effect” reflect and illustrate the “ferocity of debate that challenge friendships, family relations and political careers”.

The author highlights how Britain’s Covid experience from 2020 would be a “clear line in history” in terms of the actions by those in authority who carry a “Duty of Care” in terms of decision making, for the benefit of all, and public scrutiny. He highlights the response of scientists, in developing life saving vaccines, the efforts of NHS staff, how individuals dealt with grief, loss and isolation by lockdown and how they demonstrated care for others in “acts of kindness”, clapping on the doorstep, and volunteering.

This is an outstanding and inspirational book which highlights how the “Duty of Care” has been exemplified both in historical terms after 1945, alongside the need for a

“new Beveridge” to meet the current challenges. These are evident today in terms of social care, social housing, technical and technological education, artificial intelligence and climate change. In particular, the author emphasises the need to avoid political partisanship to achieve “progress”. We live in expectation that the “new Truss government” can meet the challenges facing social structures, the economy, poverty and “the realm” with an emphasis on “Duty of Care” at all levels.

Butler to the World

Author - Oliver Bullough

Publisher - Profile Books

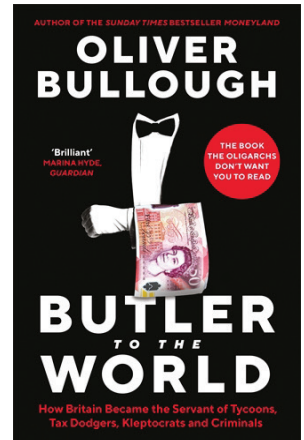
In contrast with the positive message regarding the willingness of individuals and groups to take on sportive roles to promote a “Duty of Care”, **Oliver Bullough in his book “Butler to the World” undertakes an unflinching investigation into how Britain became “a safe haven” for oligarchs, tycoons, tax dodgers, gangsters and “kleptocrats” (rulers who use their power to transfer or steal their country’s resources). He illustrates how Britain has become an amoral enabler for hire and enforcer for cash.** Readers may well be aware of examples of money laundering by “dubious gifts”, kleptomania, sheltering wealth in property deals, creation of “companies”, consultancy payments to politicians, etc. **enabling individuals to gain status, recognition and in some cases political influence.**

In an enlightening introductory chapter. **Oliver Bullough unravels the complex nature of “money markets” including the power or “clout” of the “merchant banking elite”.** In particular, he enlightens the reader on the strategies taken by the City of London to “re-invent itself” linked to the actions of the Midland Bank and the London based bank “Moscow Narodny” enabling banks free to earn profits from “new sources”.

Readers may well find it amoral as the author highlights the role of the “British Virgin Islands” as the central point for **the creation of “shell companies” (BVI companies) which created a tax loophole enabling kleptocrats and oligarchs to “disguise their wealth”.** This loophole enabled them **to avoid contributing by not paying tax to meet the costs of national institutions, “A Duty of Care”, to support society.**

The “BVI” companies became powerful entities which created “discreet and affordable asset protection services” to hide illegal assets and avoid payment of taxes. The text highlights how the “Tanzanian experience” illustrates what could be described as the “tip of the criminal iceberg” as its framework **was replicated by the actions of the gambling industry in establishing a “safe tax havens” in Gibraltar.** The chapter “Rock Solid” describes in detail how **Gibraltar prospered from the “reality of gambling addiction in Britain’s most deprived neighbourhoods”.** In a similar fashion, the development of SLPs (Scottish Limited Partnerships) encouraged the investment of money into the British economy through fund management schemes which were “tax havens”. **As the author emphasises, Britain became the “butler”, the servant of the rich.**

I am sure readers will be angered and filled with abhorrence as the author recounts in the chapter “Down the Tubes” the actions of the Ministry of Defence in selling “Brompton Road” tube station and access to a fleet of linked to underground stations to Dmitry Firtash. He is described as **“the Kremlin’s man in Ukraine”,** with links to Gazprom” and Putin who had become vastly rich and influential. He was welcomed by royalty following gifts to Cambridge University with no apparent concerns about the origins of his wealth. The author considers, on the basis of the evidence collated, that Britain has behaved as an “amoral enabler”, hiding the reality of its actions. He points to the sale of “golden Visas” to wealthy foreigners to jump the visa queue and how many of Russia’s richest and “best connected” men have a whole fleet of mansions in London. Bullough argues on the basis of outstanding research, “butlering” thrives because it is supported by many influential people who countenance the fact that the rules Parliament has made are not enforced.



This is an outstanding, and at times, mind blowing exposition of how Britain has attracted and welcomed money laundering, kleptocracy and the wealth of “legalised criminals”. Oliver Bullough highlights how Britain faces the consequences of the Russian invasion of Ukraine, control of gas pipelines and how hidden wealth has created a new aristocracy. **This book is essential reading as it discusses “hidden wealth” as a strategy in promoting influence and power within political and financial arenas, highlighting that “butlerism” offers no Duty of Care for the proletariat.**


About the reviewer

John T Morris BA(Hons),MEd,MPhil,DipPsych,CertEd.

John taught physical education in Ladbroke Grove, fitness coach at the Middle Row Boxing Club. Following further study at Aberystwyth he was head of three specialist centres for young people in North Wales, fitness and weight training coach in Wrexham, fitness coach at Wrexham RFC and with the WRU. John’s research at Lancaster University was on developing growth mindsets. He currently works as a freelance consultant to promote mindsets in terms of attitude, behaviour and performance levels in education and sport.

www.houghtonweavers.com

THE HOUGHTON WEAVERS



Appearing At

GLADSTONE THEATRE

Tues 13th December @ 7.30pm
 Box Office: (0151) 643 8757
 www.gladstonetheatre.org.uk



Comley

FENCING

MANUFACTURERS, SUPPLIERS AND INSTALLERS OF QUALITY FENCING.

- FENCING
- SHEDS
- PAVING
- CONCRETE
- TURFING
- POSTS/BASE

OPEN TO THE PUBLIC/TRADE

FREE QUOTE
CALL 01244 534444
MOBILE 07555 490375

The Old Stables, Station Road,
 Sandycroft, CH5 2PT
 Email: comleypaving@hotmail.com




**Do you see me?
 So do your clients!**

Lets get businesses back on track. We have great offers for new advertisers.

Get in touch with us.
 Call **01244 555244** or visit our website love-chester.com





What's on

THE GIG CARTEL PRESENT

FLEETWOOD MAC

THE FLEETWOOD MAC TRIBUTE SHOW



"SPOT ON. FANS OF THE REAL THING WILL CERTAINLY NOT BE DISAPPOINTED"

THE STAGE

"PAINSTAKING ACCURACY"

THE TIMES

THEATR BRYN TERFEL PONTIO

SATURDAY 19 NOVEMBER

(doors 7.30pm - tickets £20)



Sea, shingle and shipwrecks

As winter approaches, it's good to reminisce over the wonderful walks we've enjoyed over the last few months. During the summer, members of Chester Rambling and Hill Walking Club have trekked many miles, near and far, over hills and mountains, along cliffs, beaches and riversides, through fields and forests... and beyond. We've done this in the usual variety of weather conditions, including temperatures rather too hot for comfort, and, at the other end of the scale, the odd heavy rain shower and some rough, gusty winds.

As I write, the camping gear has been packed away for the winter, following our autumn weekend over on Anglesey. Three days' walks were organised, each one a circular route involving a different section of coastal path. Day 1's 9-mile walk from Benllech introduced us to some of Anglesey's history, including the Royal Charter tragedy in 1859, when a ship sank during a violent storm. A monument stands on the cliff at Moelfre in memory of the many people who perished that night. Continuing north, we headed along the coast towards Traeth yr Ora, where packed lunches were devoured on the sunny shingle beach. From here, we could see the tiny rocky islet of Ynys Dulas out in the bay, with its 19th century stone tower that once stored food and provided shelter for shipwrecked seamen. Now redundant from its original purpose, it's been exposed to sea and storm for nigh on 200 years, standing testimony to its robust construction. We carried on to the wide estuary at Dulas Bay, where the skeletal remains of a long-abandoned fishing boat lay askew in the marshy sand. At this point, we swung inland, stopping by to visit a prominent Celtic cross that commemorates the 18th century Morris brothers who were local patrons of Welsh literature, arts and history.

We briefly hit the coast again at Lligwy, before striding onwards past the ruins of a 12th century chapel standing in solitary isolation in a field with a stunning sea view! Nearby was the ancient Romano British settlement at Din Lligwy, and a Neolithic burial chamber. There's no shortage of history in this corner of Anglesey! Having had an eventful day of walking and culture, we returned to base, making our way along field paths and tracks.

With walks at Cemlyn Bay and Carmel Head on Saturday, and Newborough and Llanddwyn on Sunday, we experienced three of Anglesey's four corners, and a wide variety of landscapes. We were blessed with mostly clement weather for this trip, with the rain staying away until late Sunday afternoon. So, after a dry, sunny weekend, those of us staying till Monday morning had the joy of packing up wet tents and caravans. I've lost track of how many times this has happened!

Nights under canvas are over for this year, but preparations are well underway for next summer's camp in North Yorkshire, and a September one in Derbyshire. During the coming months, with the weather turning cooler and daylight hours on the wane, we will travel shorter distances to walk start points. For this reason, our newly issued winter walking programme features destinations less far afield, including Flintshire, Denbighshire and Cheshire.

If you fancy discovering new walks in North Wales, Cheshire and beyond, but don't know the area well enough to go it alone, joining a hiking group with experienced leaders could be for you. We have a choice of 2 - 3 grades of walks most Sundays: C's can be up to around 1,000 ft of ascent, B's up to 2,000ft, and A grade walks tackle the higher crags, usually in Snowdonia. We are also out every other Wednesday for a hike of 8 - 9 miles. Our long-awaited social calendar kicked off in October, offering a programme of talks, social evenings and Christmas events.

We are a very friendly group and new members are always warmly welcomed. Whatever your walking ability, if you love the outdoors and fancy meeting like-minded folk, come and join us!

To find out more about Chester Rambling & Hill Walking Club, head over to our website: www.chesterwalkingclub.com Joining details can also be obtained by emailing chesramclub@yahoo.com

Maria Owen, Press Officer, Chester Rambling and Hill Walking Club





Arley Halls Christmas Shopping Spectacular returns again

It might be a bit too soon to be talking about Christmas, but this festive event at Cheshire's Arley Hall is something to look forward to.

The Arley Hall Shopping Spectacular returns this year even bigger and better. The event begins with a preview evening on Tuesday 15th November followed by daytime shopping and socialising on Wednesday 16th and the additional day of Thursday 17th to ensure you can complete your festive shopping.

The popular Christmas shopping event is held on the site grounds and is in aid of The Joshua Tree – a charity set up by Northwich couple Dai and Lynda Hill after their little boy Joshua was diagnosed with Leukaemia, aged just five.

Today Josh is a healthy 22-year-old personal trainer, who even puts on fitness sessions at The Joshua Tree's Support Centre in its beautiful rural setting in Sandiway.

50% of all tickets, plus 10 per cent of everything people spend at the event, will go directly to the charity, raising vital funds to help support families affected by childhood cancers across the North West and North Wales.

And if that is not reason enough to get involved, the shopping event will once again include a glass of fizz to visitors on the evening of November 15, with more than 60 handpicked stalls offering a wide variety of stunning gifts and ideas for Christmas.

On the evening of November 15 there is shopping preview evening from 5.30pm until 9.30pm. Tickets are £20 which includes a glass of fizz and festive entertainment and shopping.

Early bird pre-paid tickets are now available at £16 for the evening of Tuesday 15th and available until October 7th, after which tickets will increase to £20.

The daytime event on November 16 and 17 is from 9.30am until 3.30pm and tickets are £8.50 for the early bird offer or £10 on the door. A two-day pass is also available at an early bird rate of £15, £17 on the door or after October 7th.

For more information or to book tickets which are available online visit

<https://thejoshuatree.org.uk/events/the-arley-hall-christmas-shopping-spectacular/>





Wirral Estate Planning



**DON'T BE CAUGHT
NAPPING!!**

**LASTING POWERS OF
ATTORNEY FOR
HEALTH & FINANCE
MATTERS**

SINGLE: £240 FOR BOTH

COUPLE: £360 FOR BOTH

**** INCLUDING VAT & HOME VISITS ****

Call: 0845 052 2757 (std rate)

info@wirralestateplanning.co.uk

Visit our website:

www.wirralestateplanning.co.uk

FRANCHISE OPPORTUNITIES AVAILABLE!

Would you like to be your own boss in the jewellery industry?
We have national franchise opportunities available with the aim of growing business together.



VOW
Jewellery Wholesaler & Manufacturer

17 Bridge St Row East, CH1 1NW Chester, United Kingdom
+44 1244 322225 ∞ vowjewellery.co.uk

● UK ● Belgium ● Germany ● Turkey