

LOVE Chester

The Monthly Business & Community Magazine



ROTARY MEMBERS

September 2018
Issue 19

Your **LOCAL** magazine delivered monthly in & around Chester



**USE OUR ADVERTISERS TO KEEP CHESTER BUSINESSES MOVING
FOR QUALITY, LOCAL and RELIABLE TRADES PEOPLE**

www.love-chester.com  

ONCE YOU HAVE READ ME PLEASE PASS ME ON TO SOMEONE ELSE!

Call: **01244 555244** or email: info@love-chester.com

**HIGH
QUALITY
VIDEO**

01829 707 860
WWW.CPROGRESS.CO.UK

VIDEO



PRODUCTION AND PHOTOGRAPHY

SERVICES

- ✓ CORPORATE
- ✓ CASE STUDIES
- ✓ 4K HIGH DEFINITION
- ✓ DRONE FOOTAGE
- ✓ PHOTOGRAPHY
- ✓ VIDEO EDITING
- ✓ PRODUCTION
- ✓ EVENTS
- ✓ ANIMATION
- ✓ GREEN SCREEN
- ✓ VOICE-OVER
- ✓ DIRECTION

HIGH QUALITY GUARANTEED

BREATHTAKING AERIAL VIDEO AND PHOTOGRAPHY FROM **£175**



Our experience enables us to make your vision a reality using high quality HD video equipment and the latest videography techniques. We believe in quality, and will create a project brief that is unique to your requirements, timescale and budget.

01829 707 860 - hello@cprogress.co.uk - www.cprogress.co.uk



We are now open

SUNDAY 9-6 pm

MONDAY 9-6 pm

TUESDAY 9-6 pm

LATE NIGHTS

WEDNESDAY 9-9 pm

THURSDAY 9-9 pm

FRIDAY 9-9 pm

SATURDAY 9-6 pm

Cut & Finish £20.00

Colours

Full head highlights £50.00

including cut & finish

Half head highlights £40.00

including cut & finish

PERNICKETY HAIR CO

0151 355 3608

L'ORÉAL
PARIS

JOICO
THE ART OF HEALTHY HAIR

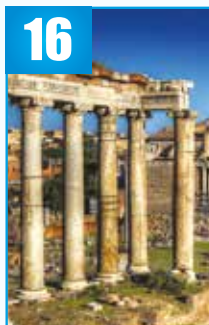
HEAD
CANDY

ghd

FUDGE

49 Chester Road, Whitby, Wirral

WHAT'S IN THIS MONTHS LOVE CHESTER MAGAZINE



14

What's Happening At Our Zoo

16

Holiday Destinations Rome

28

Auto Review by Tony Yates

32

September Tasks In The Garden

36

Chester Rambling & Hill Walking

Love Chester

The Local Magazine for Businesses in and around Cheshire.

Support Local Charities

Do You Know?

What's Happening At Our Zoo

Holiday Destinations

Community News

Support Local Charities

Auto Review by Tony Yates

Support Local Charities

September Tasks In The Garden

Chester Rambling & Hill Walking

Diary Dates 2018

Puzzle Corner

Our Advertising Deals

Cover Photograph : Chester Cathedral

8
12
14
16
20
24
28
30
32
36
38
40
42



Dear Friends,

First of all we would like to say a **BIG thank you** to all of our regular advertisers - we value your loyalty, and a warm welcome to our new advertisers too!

We would like to wish all the children going back to school and high school good luck, exciting times ahead.

Chester Zoo are taking part in 'International Red Panda Day' on the 15th September and 'World Rhino Day' on the 22nd September, if you can go to the zoo on those days the Zoo Ranger team will be on hand to help celebrate all things panda and rhino!

Don't forget to let our advertisers know you have seen their advert in **Love Chester** magazine, without them there wouldn't be a magazine, so it's important information!

Keep up to date with us on facebook and our new facebook group, twitter & visit us at:

www.love-chester.com

Best Wishes
Maxine & Mike



Circulation of this **FREE** magazine is distributed to Chester and its surrounding villages.

Love Chester Magazine Limited Registered Office: 1st Floor 12 Church Road, Gatley, Cheadle, Cheshire, SK8 4NQ
Company Number: 10588054

"Love Chester" is produced by an independent organisation; which is not connected to any other organisation, publication or groups. All material is copyrighted and no part of this publication may be reproduced or transmitted without the written permission of the copyright holder.

Please note that we do not endorse any products or services of any advertisers. All advertisements and their content are accepted in good faith. Responsibility for copyright and the accuracy of the information provided lies with the advertiser.

Call us on:
01244 555032
DURABASE
 Advanced Base and Wall Systems for Conservatories

PURE
 CONSERVATORIES

CONSERVATORIES | HOME EXTENSIONS | ORANGERY

Your dream room with
 less mess and faster fitting



No need for forklift, digger or skip means less mess and waste to deal with. In addition, building with Durabase means a faster installation and a far better insulated room than seen with a traditional build.



A local family run firm you can trust

Email: sales@pureconservatories.co.uk



www.pureconservatories.co.uk



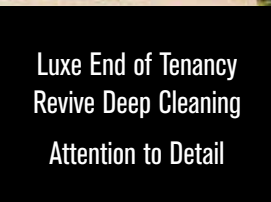
LUXE Professional Cleaning Services



Luxe 5* Domestic Cleaning
Trustworthy Service



Luxe Speciality
Seasonal Cleaning
Always Prepared



Luxe End of Tenancy
Revive Deep Cleaning
Attention to Detail



Luxe Holiday Lets &
Air B&B Power Cleaning
Expert Service



Luxe Move In | Move Out
Professional Cleans
Organised Service



Luxe
Commercial Cleaning
Always Professional

Feel free to contact us for a FREE no obligation quote on our bespoke cleaning services

TEL: 01244 674847 www.luxecleaning.co.uk enquiries@luxecleaning.co.uk

Ever thought about running
your own pet business?



If you have a love for dogs and want the flexibility of running your own business managing a team of dog carers, we could have the perfect opportunity for you!

Join the award-winning franchise

PetStay

visit www.petstay.net to find out more
or call 01482 307684

Independent Home Care Services



For all your home care needs

I offer a Nurse Led service that combines the best of Nursing and Social Care, enabling a cost effective approach that promotes holistic health and well being in the comfort of your own home.

As a Nurse and owner of Independent Home Care Services, I will conduct all assessments and work with you and your families to create a tailor made service to meet all of your needs.

All carers provide daily care and report to me as your Nurse any problems and concerns ensuring that you are assessed and appropriate actions taken ensuring you receive the best possible care and without delay, offering you and your loved one an extra level of care and reassurance.

Please get in touch to see how Independent Home Care Services can help you.



Stella Abbinante RGN
Dip HE, BSc (Hons), PGCPD, MSc Education

Tel: 07875 021 215 

Email: info@independenthomecareservices.co.uk
www.independenthomecareservices.co.uk



Titan

PROPERTY SERVICES LTD.

Your Local Electrical Specialists

We provide all electrical work for residential, commercial and industrial

Services include:

- Full electrical installations
- Electrical repairs and maintenance works
- Lighting installations and repairs
- Emergency lighting supply and testing
- House and office rewiring
- Circuit panel upgrades
- Full system design
- Compliance checks and certification

Call on our experts today for a free quote and advice

01244 621871

www.titanpsltd.co.uk



LPW PLUMBING SERVICES

Your Local Emergency Plumber

- 24 HOUR PLUMBING
- ALL GENERAL PLUMBING REPAIRS UNDERTAKEN
- PLUMBING MAINTENANCE
- ALL BLOCKAGES
- BATHROOM DESIGN & INSTALLATION
- ALL WORK FULLY INSURED

WIAPS - Water Industry Approved Plumbing Scheme

24hr 07738 462315

www.lpwplumbingservices.co.uk

info@lpwplumbingservices.co.uk



Apropro Project Services Ltd

A PROFESSIONAL PROJECT SERVICES COMPANY

Experienced, LeanSixSigma Black Belt certified Project Manager providing services and support to industry and organisations:

- Project management, solutions, services and support
- LeanSixSigma programme development, management and support

PROJECT MANAGEMENT

- Project Plan Development
- Management of project to plan and to timescales
- Project team leadership and co-ordination
- Record keeping
- Progress tracking and reporting

LEANSIXSIGMA

- Development of LeanSixSigma programmes and initiatives
- Application of Lean and Six Sigma methodologies
- Training in LeanSixSigma skill set
- Support of LeanSixSigma programme and resources

APPLICATION AREAS

- Process design; process improvement:
- Production processes
 - Transactional processes
- Cost reduction and savings
- Efficiency improvement
 - Cycle time reduction
- Reliability improvement
- Fault finding
 - Root cause identification and resolution

Please contact: **Graham Cook**

Tel: 07773 572025 Email: grahamcook463@sky.com

PLEASE SUPPORT LOCAL CHARITIES

This page is dedicated **FREE** to all registered Charities who wish to advertise.

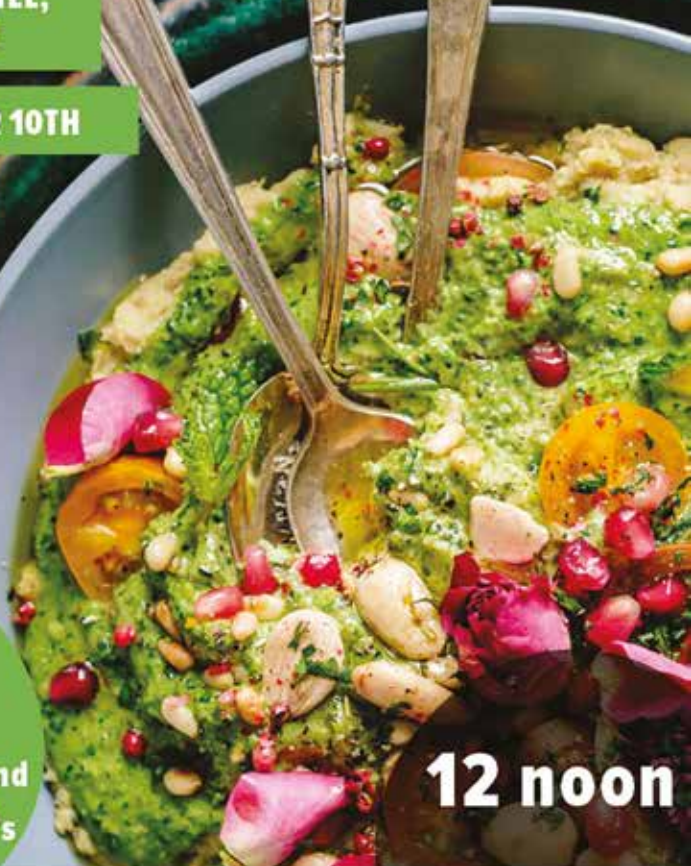
LADIES LUNCH

WILLINGTON HALL HOTEL,
TARPORLEY, CW6 0NB

WEDNESDAY OCTOBER 10TH

£23

to include a 2 course
lunch with coffee



Guest speaker
June Corner
will deliver her
humourous snippets and
stories from the 1920's

12 noon

hope house

01691 671 671
hopehouse.org.uk

tŷ gobaith

Registered charity: 1002859 (England & Wales)



Sanctuary
Care

'Keeping kindness at the heart of our care'

Visit our stunning and friendly care home which recently achieved 'Good' in all areas from the CQC*.

Caldecott Close, Upton,
Chester CH2 1FD



Pre-book
your respite
break!

Upton Dene Residential and Nursing Home

Residential ☀️ *Residential Dementia* ☀️ *Nursing*

Did you know, we offer short stays in our welcoming care home which you can book in advance, giving someone special a lovely holiday and loved ones the chance to take a break of their own. Contact us to find out more.

Call 01244 569 825
www.sanctuary-care.co.uk

* From a report published on 27 June 2018.



Blueberry

Learning & Development

ADULT LEISURE CLASSES

Blueberry offers a high quality but friendly learning experience. All courses are delivered by experienced and fully qualified tutors. Venues in Ellesmere Port and Chester.

COOKERY	LANGUAGES	WORKSHOPS
BAKING	ART	FLOWER
CAKE	CRAFTS	ARRANGING
DECORATING	PHOTOGRAPHY	COMPUTERS

PLUS MANY MORE QUALITY CLASSES

Courses start this September

To reserve your place fill in the on-line form.

Or attend enrollment day on the 12th of September.

Masonic Hall
141 Chester Road
Ellesmere Port, CH65 6SD.
10am to 1pm 3pm to 8pm

Tel: 07532 733332 Email: enquiries@blueberrylearning.co.uk

www.blueberrylearning.co.uk

cheshire joinery *services ltd*

Bespoke hardwood windows and doors



Join us for a workshop tour and have a bag of briquettes on us!!

Unit 1b, Barrowmore Estate, Gt Barrow, CH3 7JA
www.cheshirejoineryservices.com
info@cheshirejoineryservices.com
Tel: 01829 741751

DO YOU KNOW?

1. King Abdullah of Saudi Arabia was shocked when Queen Elizabeth II drove him around her estate, since women couldn't drive in his country.
2. Catholics in Nicaragua, who observe Lent by abstaining from meat, make meals of armadillo or iguana instead.
3. The record for the most Wimbledon titles is held by Professor Bernard Neal: he was croquet champion 38 times.



4. Self-driving cars play Grand Theft Auto to learn how to drive better.
5. More than four tons of old U.S. paper money is mulched into compost every day.
6. You can get a Stand-up comedy master's degree at the University of Kent.

7. US\$1 million will only get you 16 square metres of prime property in Monaco, 22 square metres in Hong Kong, and 25 square metres in New York.



8. Alexander the Great's army conquered the world while wearing armor made of linen that could stop any arrow made at the time.
9. The oldest D20 dice was uncovered in Egypt and dates back around 30 BC.
10. Slovenian-speaking babies learn the number 2 sooner than English-speaking ones.
11. Humans are 50% heavier and four inches taller in the past 100 years than they have been throughout most of human history.



12. In 5,000 years of human history, only one disease has been eradicated: smallpox.
13. When Columbus "discovered" the Americas, the continent was already inhabited by 90 million people which was a third of the world's population.
14. Leif Erikson is regarded as the first European to land in North America, nearly 500 years before Columbus.
15. We Are Living In The Most Peaceful Time In Human History.



16. 600,000 hacking attempts are made to Facebook accounts every day.
17. You can change your language on Facebook to "Pirate."



18. Global warming could drive to extinction as many as 1 in 6 animal and plant species.



19. August 2014 was the warmest August ever recorded globally.
20. Cows emit more methane than the oil industry and are a huge factor in global warming.
21. About 24,000 people are killed by lightning strikes around the world each year.
22. Ounce by ounce, Nutritious food costs up to 10 times more than junk food.
23. Google hired a camel to create the Street View of a desert.



24. If a Formula One driver puts on 11 lb in weight, it can add 0.2 seconds to their lap time.
25. Isaac Newton lost the equivalent of US\$3 million in today's money on stock market in 1720.
26. Alexander Graham Bell invented several flying machines, but his attempts at flying flopped.
27. There are 328 people named "Abcde" in the U.S.



28. Arthur Guinness, founder of Guinness Brewery, had 21 children with just one wife.
29. Soccer player Edson Arantes do Nascimento, most known as Pelé, was named after Thomas Edison.
30. In 1898, Nikola Tesla predicted drone warfare.
31. Pablo Escobar offered to pay the whole of Colombia's national debt in an attempt to avoid extradition to the U.S.





Sherlocks

Big Enough To Manage — Small Enough To Care



Dear Residents

At Sherlock Estate Management we specialise in the day to day running of apartment blocks, large and small both locally and throughout the region. We are a friendly company and have been established since 1986 in the centre of Liscard, which is located in Wallasey, Wirral.

We are pleased to have an opportunity to offer you our services as estate managers. We do appreciate considering a management company can be a delicate decision but we can assure you that we are **100%** confident that we can help you. With this in mind we would be more than happy to call and see you, or you are more than welcome to visit us here at our office. Our time is your time.

We feel residential management requires a personalised approach and given the opportunity, we will endeavour to familiarise ourselves with you and your property and match our service to your requirements, this is something we pride ourselves on.

The items below illustrate a number of day to day tasks that we can administer on your behalf:

Service Charge Collection

Legal Matters

General Cleaning

Gardening

Window Cleaning

Decorating

Maintenance

Insurance Policies

Annual Accounts

Neighbourly Issues

We can arrange new or retain existing contractors and can help with as much or as little as you need.

Sherlock House, Manor Road, Wallasey, Wirral, CH45 4JB

Telephone: 0151 638 8160

www.sherlockpropertymanagement.co.uk



OUR ZOO

What's happening at Chester Zoo.

Endangered okapi born at Chester Zoo

- **“Precious” calf arrives to five-year-old mum, K’tusha**
- **Conservationists hail newborn as a huge boost to the breeding programme for the highly threatened species**
- **The okapi is the only living relative of the giraffe**
- **Amazing animals were only discovered in 1901**
- **Zoo experts are working in Africa to help assess and monitor key populations of this elusive rainforest giraffe**

Partially striped and cute all over! A rare okapi calf has been born at Chester Zoo to first-time mum K’tusha.

Conservationists at Chester Zoo are celebrating the birth of a rare okapi.

The male calf, which keepers have named Semuliki, arrived to first-time mum K’tusha (5) following a pregnancy of almost 15-months. It is the first calf at Chester for dad Stomp (14).

Despite its zebra-like stripes on its back legs and hindquarters, the okapi is actually the closest and only living relative to the giraffe. Its camouflage, acute sense of hearing and secretive nature contributed to it being unknown to science until 1901.

The okapi is found only in the rainforests of the Democratic Republic of Congo (DRC) where, despite being a national symbol and protected under Congolese law, it faces a battle for survival.

Okapi populations declined in the wild by nearly 50% over the past two decades and the species is now



listed as endangered on the International Union for the Conservation of Nature’s (IUCN) Red List of Threatened Species.

Tim Rowlands, Curator of Mammals at Chester Zoo, said: *“With just 68 okapi in zoos in Europe, the safe arrival of*



OUR LATEST NEWS & EVENTS

this calf is a huge boost to the breeding programme for the species. K'tusha is proving to be a very relaxed and attentive mum to her first little calf.

"And vitally, the birth serves an important reminder of just how highly endangered these beautiful animals are.

"For a long time, their shy nature and their isolation in the deep forests of the DRC had kept the okapi safe. However, today, they are highly threatened by hunting and increasing levels of habitat destruction. Our conservation efforts are now vital for their long-term future."

Conservationists are currently unsure of exactly how many okapi remain in the wild but zoo experts are playing a key part in surveying the species in the wild in a bid to discover more about the shy animals.

Mike Jordan, Collections Director, added:

"The biggest current threat to the okapi is hunting due to the presence of illegal armed groups and a growing bushmeat trade across nearly all of the okapi's range. This insecurity is a major hurdle to effective conservation action in most areas.

"A heart-breaking example of this was in June 2012 when armed rebels attacked the headquarters of a reserve that the zoo supports - the Okapi Faunal Reserve (OFR) in the DRC's Ituri forest - tragically killing seven people and the 15 okapi being cared for at the station. However, we won't give up on these wonderful animals and Chester Zoo continues to fight for the species. We support our partners the Okapi Conservation Project and the Congolese Institute for the Conservation of Nature, despite these difficult and dangerous conditions, to protect the OFR, a major stronghold for the species."

Along with the Uganda Wildlife Authority and with the support of the Giraffe Conservation Foundation, zoo experts have recently led surveys looking for okapi in the Semuliki National Park, Uganda on the border with DRC.

Stuart Nixon, the zoo's African Field Programme Coordinator and member of the IUCN's Giraffe and Okapi specialist advisory group, added:

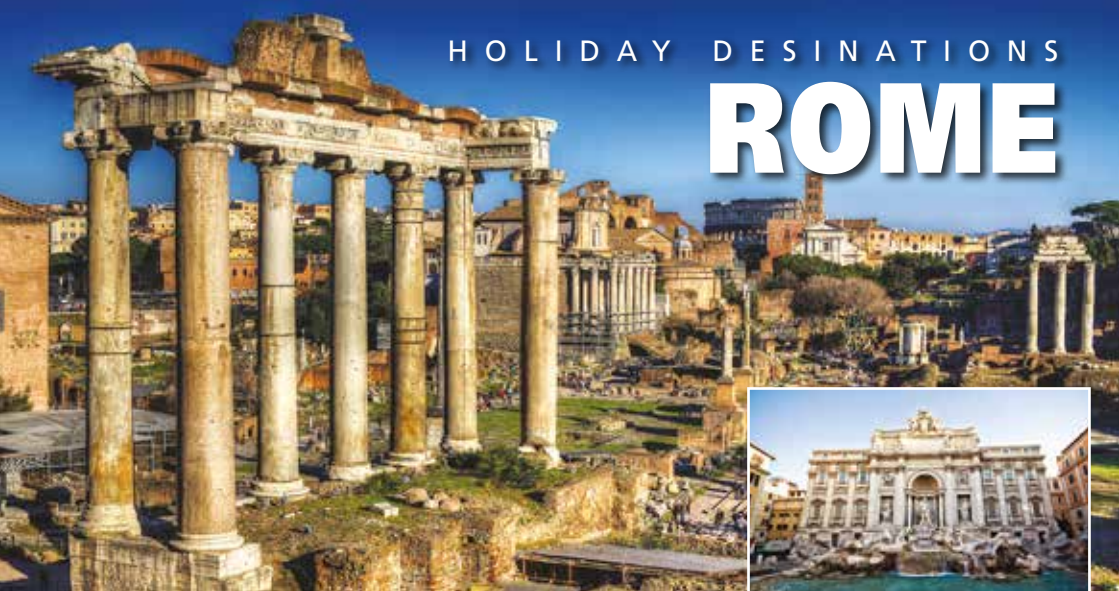
"We are also supporting rural communities in the Maiko region of DRC to monitor and conserve okapi populations which occur in their ancestral forests outside of protected areas. Together with our partners, Chester Zoo is striving to ensure there's a future for these beautiful, gentle creatures."

Okapi facts

- Zookeepers have named him **Semuliki**
- Okapis are one of the oldest mammals left on Earth
- Despite its long existence, its discovery was only announced by scientists in 1901
- The okapi is the only living relative of the giraffe
- Male okapis have short horns on their foreheads that are covered in skin and called ossicones
- They have scent glands on each foot that leave behind a tar-like substance to mark their territory
- They can lick their own ears! The okapi's tongue measures between 14 and 18 inches long – that's long enough to clean its ears and wash its eyelids.



ROME



On this holiday you will visit some amazing cities including Barcelona, which is the capital city of the autonomous community of Catalonia in Spain and Spain's second most populated city. Founded as a Roman city, in the Middle Ages Barcelona became the capital of the County of Barcelona.

The city is full of culture and wonderful architecture such as Gaudi's masterpiece, Sagrada Familia church. Here you're sure to visit all the main attractions and night life with its great restaurants and bars.

You will be staying for 3 nights in Italy's major city to visit which is my favourite - **Rome**. You will be staying at the fantastic **Rimini Hotel**, full of charm and character.

Rome is the capital of Italy and of the Lazio region. With 2.9 million residents in 1,285 km² (496.1 sq mi).

Rome's history spans more than two and a half thousand years. While Roman mythology dates the founding of Rome at only around 753 BC, the site has been inhabited for much longer, making it one of the oldest continuously occupied sites in Europe.

The city is located in the central-western portion of the Italian Peninsula, within Lazio (Latium), along the shores of Tiber river. The Vatican City is an independent country geographically located within the city boundaries of Rome, the only existing example of a country within a city: for this reason Rome has been often defined as capital of two states.

Monuments and museums such as the Vatican Museums and the Colosseum are among the world's most visited tourist destinations with both locations receiving millions of tourists a year. Rome also hosted the 1960 Summer Olympics.

Rome has earned its ancient nickname of The Eternal City - no matter how many places in Italy vie for our attention, there's no city that can compare to Rome. Here you can walk the same streets that Caesar once walked, set foot in the smallest independent nation on earth, and see the handiwork of some of the world's greatest artists. Then you can turn a corner to see how modern Romans live alongside all that historic splendor.

Stroll through the one-time epicenter of the Roman Empire, gaze over the largest Roman amphitheater, see the Pope give his weekly address in St. Peter's Square, test your resolve at the Mouth of Truth, learn to fight like a gladiator, and find out what makes Roman pizza different from the stuff you'll eat in Naples. Few cities can entertain and overwhelm as quickly as Rome, so plan to take your time - and take plenty of breaks to sample the city's famous coffee and gelato. And don't forget to throw a coin in the Trevi Fountain to make sure you get a return trip to this most fascinating of cities.

You will then sail away to visit **Marseille** which is the second largest city in France after Paris.

Marseille was historically the most important trade centre in the



Trevi Fountain

region and functioned as the main trade port of the French Empire. Marseille is France's largest city on the Mediterranean coast and largest commercial port as well as a leading cruise and freight port.

You will then sail away to visit **Barcelona**, prepare to be wowed by the creative genius of Gaudi, take time out along the stunning harbour, and get to know these sandy shorelines by the shimmering Mediterranean. Bars, beaches, boutiques and more...

You again set sail for the beautiful island of **Mallorca** one of Spain's Balearic Islands in the Mediterranean. It's known for beach resorts, sheltered coves, limestone mountains and Roman and Moorish remains. Capital Palma has nightlife, the Moorish Almudaina royal palace and 13th-century Santa Maria Cathedral.

Palermo in Italy is your next port of call before returning once again to Rome. Palermo is the capital of the Italian island of Sicily. Enjoy yourself if you book this holiday.

If you would like to visit Italy, France, Spain and Balearic Islands then visit

WWW.CRUISEINATION.COM

Cruise Ship: Costa Diadema
FREE OCTOBER 2018, - 10 nights
FREE STAY INCLUDED
FLIGHTS INCLUDED

ONLY: £689.00

DHL Summer Sale

HOUSE MAKEOVERS FOR ONLY £995

Been meaning to get round to painting the outside of your house but keep putting it off?...



- 🛡 Complete Makeover - prices start at just £995
- 🛡 Time Served Tradesmen
- 🛡 NO Subcontractors
- 🛡 Fully Insured
- 🛡 NO Mess Left
- 🛡 0% Interest Free Credit Available

To receive this offer use Promo Code **Chester-LCS 62** on enquiry.



DRY HOME LIVING

TEL 0151 317 2385

Email: dryhomeliving@mail.com

www.dryhomeliving.co.uk





OAKWOOD FARM MEWS

You can look forward to a warm welcome at Oakwood Farm Mews. We provide modern en-suite accommodation. We are situated on the outskirts of Chester and are conveniently located for Chester Races and the M56 link to Manchester and Liverpool & North Wales.

- Full en-suite accommodation
- 9 Spacious comfortable rooms with Free WFI
- From £50 per night
- A Dog friendly room at an additional £10 per night.



Oakwood Farm Touring Park

Here at Oakwood Farm Touring Park. We provide fully serviced hard standing and grass touring pitches, and a new modern heated shower block.

- A choice of fully serviced pitches
- Free Wireless Internet
- £25 per night for caravans
- £20 per night for tents
- Café on site



Spacious pitches in idyllic settings.



Oakwood Farm Mews & Touring Park, Oakwood Farm, Parkgate Road, Chester CH1 6EY
 W: www.oakwood-farm-mews.co.uk W: www.oakwood-farm-touring-park.co.uk
 Telephone: **01244 880828**

Imagine Dry Carpet Cleaning

"no soggy carpets or wet dog smell in your home"

We have dry cleaned carpets & upholstery in 100's of homes

You will  our dry cleaning system!

We also clean...

Upholstery



Leather & Fabric with super fast drying

Hard Floors with Anti Slip Coating



Tiles inc Grout • Stone Karndean & Amtico

Wooden Floors



Sandless Wooden Floor Restoration

Locally based family run business,
 Call us for FREE on

0800 180 4983
zerodrytime.com



Dry Carpet, Upholstery & Hard Floor Cleaners

Have 3 PIECE SOFA CLEANED get **50% OFF** further carpet cleaning + free Stain Guard





Keeping the roof
over your head™

Covering Cheshire, Merseyside, Wirral & Surrounding Areas

- House Roof Renewals
- Roof Re-Slates
- Firestone EPDM Rubber Flat Roofs
- Flat To Pitched Roof Conversions
- Fascia, Soffit, & Gutter Renewal

Please Contact Us For A Free Quote

 **08006344821**  **@robmcroof**

 **07960397021**  **info@rm-roofing.co.uk**

With a reliable, friendly and hard working team we can guarantee you a high standard of work with a very professional service. Our customer satisfaction rate is outstanding and we aim to keep those standards high. For photos of our work, reviews and more please visit our Facebook Page

All Work Comes With A 10 Year Guarantee

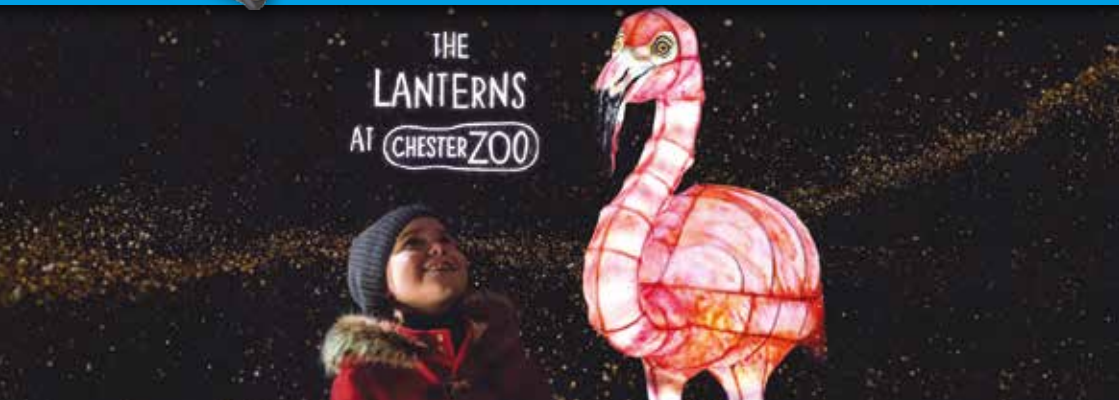




COMMUNITY NEWS

Have Your Say - Tell Us & We'll Print It!

Email us @: info@love-chester.com



- Tickets go on sale for Chester Zoo's annual Christmas festivities
- Funds raised will support zoo's work as a global conservation charity
- Long-running family event revamped for 2018
- This year's event will unveil new animal lanterns and a new route through the zoo
- Visitors will discover a colourful oversized Butterfly Garden, Nordic markets, stunning Christmas trees and a magical ice kingdom

The Lanterns at Chester Zoo

Tickets have gone on general sale for Chester Zoo's annual Christmas event, The Lanterns.

Running on selected nights from 23 November to 23 December, the heart-warming event raises vital funds to help support zoo's work as a conservation charity fighting to prevent extinction around the world.

With a colourful oversized Butterfly Garden, Nordic markets, stunning Christmas trees and a magical ice kingdom, visitors are invited to experience the zoo in a different - and much more sparkly - light!

Amidst a new journey through the zoo, this year's spectacular will display new, specially created animal lanterns - one of The Lanterns most popular features from Christmases past - and additional twinkly characters lining the route.

Jon Turley, Head of Guest Experience, said: "We really hope The Lanterns will kick-start Christmas 2018 for people, creating those precious family memories you'll never forget. At the same time, the fact that it all contributes to our work as a conservation charity, as we strive to prevent extinction of threatened animals around

the world, makes this even more special.

"So fill up on tasty festive food, explore new fantastical and colourful worlds, full of animal-inspired illuminations and traditional festive scenes, and remember to keep an eye out for Father Christmas on his sleigh. He could be just around the corner!"



Tickets range from £10 - £17.50 for adults and £5 - £15 for children. Infants age 2 and under are free.

Tickets can be purchased at www.chesterzoo.org/lanterns

The Lanterns has been lovingly created by the zoo, in partnership with multi award-winning outdoor arts producers Wild Rumpus.



FIREPLACES



- 5 kw Stove • Pipe • Plate
- Installation including all building work
- Slate tiled or granite hearth

£1295

If a liner is required

£1749

Chester Fireplace and Heating Centre Ltd

**2 High Street
Saltney**

CHESTER CH4 8SE



- Marble Fireplace
- 4.0 kw Gas Fire or 2 kw Electric Fire

**Including
Installation**

£799



- 4.9 KW High efficiency
- Glass Fronted hole in the wall fire remote control
- Choice of trim finish
- Choice of fuel bed

**Including
Installation**

£1099



- 54 or 48 inch creme marble fireplace
- 4.0kw gas fire or 2 kW electric fire

£795


Chester Fireplace
& HEATING CENTRE LTD

Tel: 01244 678714

www.chesterfireplaces.com

Call us on:
01244 555032

PURE
CONSERVATORIES

CONSERVATORIES | ORANGERIES | REPLACEMENT GLASS | LOCKS

Transform your conservatory into an all year round living space



The only system that comes with planning consent.
Call us today for a **FREE** quotation.



BEFORE ROOF INSTALLED



AFTER ROOF INSTALLED

A local family run firm you can trust

Email: sales@pureconservatories.co.uk

www.pureconservatories.co.uk



Titan
PROPERTY SERVICES LTD.

BUILDING & CONSTRUCTION | PROPERTY MAINTENANCE |

At Titan Property Services, we have a team of expert construction and maintenance professionals, with a proven track record of completing projects on time and in budget.

Our Services

- Residential buildingwork, commercial and industrial -
- New builds -
- Housing projects -
- Social housing -
- Building restoration -
- Heritage work -
- Renovation -
- Property maintenance -
- Project management -
- Partnering consultancy -

All projects are supervised by our project management team, which means that every client receives a personalised service.

We provide outstanding customer service and deliver high quality works.

Titan Property Services Ltd

Regus House | Herons Way
Chester Business Park | CH4 9QR

Telephone: 01244 621871

Email: info@titanpsltd.co.uk

www.titanpsltd.co.uk

PLEASE SUPPORT LOCAL CHARITIES

This page is dedicated **FREE** to all registered Charities who wish to advertise.

Ducks Ducks Ducks

With spring having sprung, new life popping up everywhere in the flowers beds, countryside and down by the river. We have had our own new arrivals at the Countess Charity in the form Ducks for this year's annual Chester Duck Race – Saturday September 16th 2017.

We are super excited to announce that Hickory's Smokehouse Chester will be supporting the event again for the third year running. With lots of plans to make this year's event as spectacular as ever and raising vital funds to assist the Babygrow Appeal in reaching its £2.4 million target.

We will have two races again down at the Groves. With the Baby Ducks going down the river first followed by the larger Corporate Ducks.

The smaller baby ducks will be available to purchase online at £2 each, at the hospital and at various community events throughout Chester in the run up to the Duck Race on September 16th 2017. Puddle Ducks Chester / Wirral are supporting the smaller duck race again which means fantastic prize money will be available for 1st, 2nd and 3rd placed ducks.

The larger corporate ducks priced at £200 each are available from Hanna Clarke at the Countess Charity. You can contact Hanna on 01244 366 397 / hannaclarke@nhs.net to arrange your corporate duck, so now it's time to get your thinking caps on and see who can take the 'Facebook Favourite' Duck or 'Best Dressed' Duck title. Hanna Clarke - Corporate Events and Fundraising Manager for the Countess Charity said 'Last year was my first year organising the duck race and I was astounded by the quality and innovative ideas all the companies came up with for the ducks. I am very much looking forward to seeing this year's corporate ducks, and of course the fantastic sight of the 5000 smaller ducks going off the bridge.'



*Dandys Topsoil -
Fastest Duck*



Red Door - Best Dressed Duck



*Dory Facebook Favourite -
Puddle Ducks Chester*



*Countess of Chester staff with
"Reckless" - celebrity lookalike*

Feel right at home

At your local Barchester care home



We offer a range of personalised care services that support independence and maintain individual interests. We pride ourselves on making everyone feel at home within comfortable surroundings, including our beautifully refurbished Iddenshall Hall, and our newly extended Beeston View, with a varied activities programme and freshly prepared home-cooked meals.

At Barchester we understand that finding the right care home can be a daunting decision, that's why our friendly team are on hand to offer advice and guidance at a time to suit you.

Nursing Care • Residential Care • Dementia Care • Respite Breaks

Whether you need urgent care or just some help and advice, our team are here when you need them. For more information please call or visit our website www.barchester.com


BARCHESTER
Celebrating 25 years

Beeston View
Tarporeley, CW6 0EG
Tel: 01829 289 654

Iddenshall Hall
Tarporeley, CW6 0EG
Tel: 01829 289 669

Oak Grange
Mollington, CH1 6NP
Tel: 01244 434 385



JM ACCOUNTS4U

• Remote or in house bookkeeping services

• Payroll

• Accounts & tax returns for small businesses

Call today on 07515 853 730

www.jdmaccounts4u.co.uk

James@jdmaccounts4u.co.uk



Regular Cleaning

One Off Cleans

Housekeeping Services

Tenancy Pre & Post

House Moves

Commercial Cleaning

Carpet Cleaning

Ironing Service

Contact Us

01244 350700

01829 730969

Email: info@mollymop.co.uk



Manor Park Residential Home

Established since 1985

Personalised Residential, Respite & Day Care Services



Manor Park is close to the River Dee dividing the villages of Holt in Wales, and Farndon in England, both picturesque and historical.

- Specialising in Care for the Elderly with Mental Health Problems
- State of the Art Nurse Call System
- Family run Home with locally appointed experienced staff
- Regular Indoor and Outdoor Activities and Visits, Manor Park is in close proximity to local shops, deli restaurants and pubs, all with easy wheelchair access
- All meals freshly cooked with a 5 Star Rating



To find out more, why not contact or call in and visit with one of our Management Team – Karen, Tracy or Nicki Green Street, Holt, Wrexham LL13 9JF or e-mail us at: manorparkhome@yahoo.com

LOW COST PRINTING

FOR YOUR BUSINESS OR PERSONAL USE

- Flyers and leaflets
- Letterheads & Cards
- Corporate Brochures
- Posters & Magazines
- Corporate Identity
- Vehicle Graphics
- Shop Signage
- NCR Pads
- Business Start-up Packs *and much more...*

CALL US TODAY & START SAVING ££££'s

Professional design service offered free on every order.



Email: info@cre8tivegraphics.co.uk
Telephone: 01244 55244

Indian Cookery Lessons

Learn to make your own authentic Indian meal, fresh and delicious, full of flavours

LEARN OR GIFT SOMEONE A WONDERFUL LIFE SKILL

Book NOW for day courses

8 Sept, Sat, 10am-4pm

15 Sept, Sat, 10am-4pm

6 Oct, Sat, 10am-4pm

10 Nov, Sat, 10am-4pm

8 Dec, Sat, 10am-4pm

Vegetarian classes also held.



Contact: **SOMA:**
07770752053 or 0151-334 9352

BROWSERS EMPORIUM

www.browsersemporium.com

It's an Aladdins Cave of Treasures

You name it and we've probably got it!



All types of new & second-hand furniture & fittings to browse under one roof!

From bulbs to lights, door handles to doors & stools to tables!



Hooton Works, Hooton, Wirral (Junction 5 - M53) off A41 to Chester Next to Corfe's)

Tel: 0151 328 1467

Open: Mon-Sat from 10.00am

Sunday 10:30am - 3:30pm



All credit cards accepted

Subaru Levorg 1.6i SE GT Lineartronic



This week's review puts me in the driving seat of the Subaru Levorg. But, straight away, I know what you are all thinking 'what is a Subaru Levorg'? Well, I'm glad you asked that question because the Levorg is a car that you don't see very often on the UK roads, and until my test drive this week, I didn't know much about it either. What I will say though is that the Levorg really is the Wolf in sheep's clothing.

Power and Efficiency:

The Levorg was equipped with a 1600cc Boxer - horizontally opposed DOHC 16V direct injection turbo petrol engine - a unit that provides a maximum power output of 170 PS @4,800 - 5,600rpm and a torque figure of 250Nm @1,800 - 4,800rpm. On the combined cycle I achieved 36mpg which is not outstanding, but still good for a car that I consider to be a big vehicle. If you are

interested, the Levorg will also reach a top speed of around 130mph and 0-62mph of 8.9s. So yes, this is a large vehicle, but it's certainly no slouch.

So, in the real world, does the Boxer engine design work? Well, for me it does. It sounds great, gets a move on with minimal fuss and has plenty of low down grunt. Yes, it's not as refined as some, but then again I don't want it to be refined, I want to feel that characteristic Boxer engine thumping away ahead of me as I head for the hills.

On the Road:

The Levorg feels great on any road surface and that's thanks to its predictable handling and smooth ride. Remember the Levorg also has some decent off-road capabilities and is in itself an effortless car to drive thanks mainly to

the Symmetrical All-Wheel Drive layout which includes an active torque split system which helps further increase the off-road credentials of the Levorg.

Then, there are the brakes, which feel very good thanks to 316mm ventilated discs at the front and 300mm at the rear. I kid you not, hit the pedal like you mean it, and the Levorg will come to a controlled stop in no time at all. So, no issues there then.

Design and Technology:

Some of the standard equipment on the Levorg comes in the form of Automatic LED headlights, 18" aluminium alloy wheels, automatic air conditioning system, 7" multifunction colour touchscreen, EyeSight, 4.3" LCD multi-information display, adaptive cruise control, ABS with Electronic Brake-force Distribution, front, side, curtain & knee airbags, Thatcham Cat 1 alarm Immobiliser, Symmetrical All-Wheel Drive, Vehicle Dynamics Control, Hill Start Assist, Active Torque Vectoring, plus some of the most

comfortable seats I have ever sat in.

You also get an auto-dimming rearview mirror, power windows, welcome lighting, Bluetooth, dual USB ports, reversing camera and a voice recognition system. Of course, as usual, I have only just scratched the surface on what the Levorg has to offer.

To Sum Up:

The Levorg is a decent car with plenty to offer. It's like a dependable Dog; it will be everything you ever wanted it to be and then some. Although, there are areas where I feel the interior could feel a touch more special. But saying that, it's still very functional and the drive is very rewarding thanks mainly to that unmistakable Boxer sound.

I'm going to give the Levorg 4 stars in this test because it truly is a machine that will always deliver.

Price from: £29,995



PLEASE SUPPORT LOCAL CHARITIES

This page is dedicated **FREE** to all registered Charities who wish to advertise.

CHESTER RACE COURSE SUNDAY 30TH SEPTEMBER 2018 START 12 NOON



The Hospice of the Good Shepherd has officially launched their brightest and messiest fundraising event yet to help raise money for local people with a life limiting illness.

Participants will get covered in a kaleidoscope of rainbow colours and incredible bubble foam at the Foamtastic Colourblast on Sunday 30th September at Chester Racecourse, sponsored by Oliver & Co.

"Online registrations have officially opened but we don't want people to be disappointed. The event is expected to be popular so don't delay, register your place now and take advantage of the early bird offer!"

30

Entertainment, merchandise and refreshments will add to the atmosphere and spectators are more than welcome.



Register your place today online <http://buytickets.at/hospiceofthegoodshepherd/163653>



We supply and install coloured glass splashbacks.

****Coming soon new sparkle and marble effects****



BUILDING

We understand the importance of achieving a customer's vision and needs.

Every project is completed to the highest quality and customer satisfaction is imperative.

We aim to give customers confidence that we will keep disruption to a minimum and always work within a safe, clean and tidy environment.

GLAZING

We are professional installers of windows, doors, bi-folds and frameless glass extensions.

Elliott Build & Glaze Ltd is a Fensa registered company and we are able to provide a 10 year insurance backed guarantee.

PLANNING

From first contact with the customer to completion of the project, Elliott Build & Glaze Ltd can provide all services required to meet your needs, from full architectural design to the final fitting of the flooring. We aim to make this experience as enjoyable and stress-free as possible.



T: 0151 336 6925



**TIMESERVED
TRADESMEN**



**TRUST
MARK**
Government Endorsed Standards
www.trustmark.org.uk



FENSA
Registered Company

www.elliottbuildandglazeld.co.uk

Email: elliottbuildandglazeld@live.com

Elliott Build & Glaze Ltd is a trading name of S R Elliott Build & Glaze Ltd.

September tasks in the Garden



General tasks and garden maintenance.



Start your compost

Get your compost going by buying a compost bin or building a partially enclosed and easily accessible area for a heap. It is essential to replace the goodness in soil and autumn produces quantities of garden waste that will add invaluable organic richness back into your soil next spring.

Remember to add a variety of different materials; spent vegetable plants are ideal, but NEVER add diseased or pest-ridden material to your compost heap - it will nurture whatever villain you are trying to eliminate with loving care!

Clear garden debris

Keep weeding; most perennial weeds are susceptible to weedkiller this month and systemic weedkillers will carry on working throughout the winter. Also clear any debris and diseased material from your garden. Pests and diseases that overwinter in your garden will reappear next spring with a vengeance so get rid of them now. Burn diseased material and put the rest of your garden rubbish (apart from woody stems) in the compost.

Clean out the greenhouse

Once tomatoes and other greenhouse crops are over, give the greenhouse a thorough clean to prevent pests from making a home in that lovely warm environment, ready to leap into action next spring.

Dig clay soil

If your soil is heavy clay, start digging it over now - add plenty of organic matter to improve the quality and pea shingle to improve the drainage. It can be left in a pretty

rough state over the winter when the cold will break the lumps down, making spring planting infinitely easier!

Watering

Should September turn into an Indian summer, remember to keep watering thoroughly once or twice a week rather than little and often. Containers and hanging baskets need watering every day.

For recently planted large shrubs or trees, leave a hose trickling around the base for an hour. The same goes for established plants in dry periods - camellias, rhododendrons, azaleas and hydrangeas will abort next season's flowers if they get too dry.



Ensure trees or shrubs planted in the last couple of years on lawns or in areas of rough grass have a circle of clear earth around them - this MUST be kept clear or grass will prevent essential moisture getting through. Mulching with bark or compost will help.

Planting

With the ideal planting conditions of autumn (warm moist soil), now is the time to plant container grown shrubs, trees, fruit bushes, perennials and bulbs. The key to successful planting is to water in well. Soak the rootball in a bucket until no air bubbles come to the surface, dig the planting hole, fill with water and allow to drain away. Place the plant in the hole, fill with soil, firm gently and water well with a watering can - this will give the plant a huge advantage over one planted with a dry rootball in a dry hole and watered only on the surface.

Fencing
Gates
Sheds & Log Stores
Decking
Paths & Patios

Justfencing

C H E S H I R E

Installers of quality timber fencing

FREE NO OBLIGATION QUOTES

0151 336 7598 / 01244 470 120 / 07957 349 244

www.justfencingcheshire.co.uk



LHL GARDEN SERVICES

Call Lee on 07425 159 788

30 Years
Experience
in Professional
Gardening &
Landscaping

**Quality Regular
Maintenance**
or one off garden tidy ups!

- HOME MAINTENANCE
- PUBLIC HOUSES
- RESTAURANTS
- APARTMENTS
- SHOWROOMS
- NURSING HOMES
- CHURCHES
- HOTELS

... and much more!

View our work on



Local Trustworthy Experienced Landscape Gardeners

Lawns | Fencing | Patios | Hedges | Planting | Clearance



Frodsham Gates and Fencing Direct

Manufacturers of quality white
primed picket fencing
Custom made fencing and gates
Sheds and child friendly fencing
Driveway gates
Decking & bespoke fitting service
FREE NO OBLIGATION QUOTATION



Unit 15, Brook Works, 38 Main Street, Frodsham WA6 7AX

Tel: 01928 890030

M: 07725 235 760

www.frodshamgates.co.uk

Email: sales@frodshamgates.co.uk



North West -
Corfe Depot



Wirral's No.1
for stoves & solid fuel

SMOKELESS FUEL | ECO FUEL | SEASONED LOGS | FIRELIGHTERS | KINDLING

RELAX, PUT YOUR FEET UP AND ENJOY CORFE SOLID FUELS!

50kg Open Sacks delivered of both
Smokeless and Housecoal

House Coal



Smokeless
Coal



Firelighters

Homefire Kiln
Dried Logs



Kindling



UK Heatlogs



Jumbo Bags of Logs
Hardwood or Softwood



Straws



Anthracite



Don't Shiver We Deliver!

HOOTON WORKS | HOOTON ROAD | HOOTON | WIRRAL CH66 7NB | TEL: 0151 327 5555

Visit our website: www.corfestone.com

RIGHT CHOICE

The Wise Choice

SPECIALISTS IN DRIVES & PATIO & TREE SERVICES & LANDSCAPES

- ◆ Driveways ◆ Flagging
 - ◆ Pathways ◆ Steps ◆ Walls
 - ◆ Blockpaving
 - ◆ Fencing & Walls
 - ◆ Driveways Cleaned, & Sealed
- NO WEED™ Dansand is a weed inhibiting joint filling sand used.
- ◆ Tree Shaping & Pruning
 - ◆ Overgrown Garden Restored
 - ◆ Roll On Lawns Installed
- All work carries a 14 day cooling off period



Landline: **0151 601 4883**

Direct line: **07541 331 021**

Email: **rightchoice182@gmail.com**



DRIVEWAYS



FENCING



GRASS LAYING



TREE FELLING

For a FREE no obligation quotation please call us today!

How does your garden grow?



LANDSCAPE DESIGN



INSTALLATION



MAINTENANCE

For all your garden maintenance and landscape services

Greenleaves 
Outdoor Services

Telephone: **07826 779 613** | **07840 763 275**
W: www.greenleaveswirral.co.uk | E: greenleavesoutdoorservices@gmail.com

What's in your rucksack?



It's a popular notion that time spent in the great outdoors is great for the appetite. It's safe to say that we in Chester Rambling and Hill Walking Club wholeheartedly agree with this. Several of our annual events incorporate a culinary element of one sort or another, and these are always well supported. Here's a 'taster':

Every summer we enjoy a 'chippy dinner' sitting on the sandstone front at Parkgate after a 4-mile evening walk on the Wirral. Relaxing with a bag of chips whilst gazing across the Dee estuary to North Wales is a joy indeed.

Another summer highlight is our annual evening stomp on the Sandstone Trail at Bickerton. Ending with a carvery meal at a well known hostelry nearby, this event regularly attracts about 30 participants, and nicely rounds off our summer programme of Tuesday evening walks. Both these occasions have become firm fixtures on the Club's summer programme.

As I write, we still have our autumn weekend camp to look forward to. Despite the undisputed pleasure of on-site tin-can cuisine, the group meal that takes place in the pub on the last night is always avidly enjoyed! After a few days outdoors, a dinner served up in a civilised fashion in a welcoming hostelry is guaranteed to produce empty plates.

Speaking of autumn, our winter programme will soon be distributed and enthusiastically thumbed through by Club members. Christmas events will feature in here, and some will include food, whether buffet-style or a 3-course feast. Fast forward to the new year, and the President's Dinner is the most glamorous event on the calendar. Taking place at a respected hotel or golf club in the vicinity, this is the time to discard those clumpy boots and don something a little more alluring than hiking gear and a woolly hat. As the dark nights of winter linger, the Lasagne Evening is a popular night out, as we tuck into a wholesome repast with a pudding thrown in for afters.

When it comes to dining on a Club walk, it's a much more down to earth affair, with sandwiches, an apple and a chocolate biscuit hauled out of a rucksack, devoured whilst sitting on a rock or a tree stump, with a pleasant vista of hills in front of you. The walker's midday meal is a moveable feast, the exact spot dependent on the decision of our leader, and the weather. Whilst walk leaders usually factor in lunch with a view, there has to be flexibility in the event of an outbreak of inclement weather at the wrong moment.

Even the hardest of walkers balk at the idea of eating a soggy sandwich in the middle of a rain-sodden field! So, lunch alfresco on a Club ramble could be enjoyed on a windy ridge, on an open hillside, by a babbling brook, or in a leafy forest. Sometimes in the shelter of an old barn. Occasionally on a beach. The element of surprise is one of the things that makes time spent outdoors so special. One thing's certain. Once high noon has passed, you can be sure that rumblings and murmurings will be heard amongst the walking group: 'It must be nearly lunchtime. I'm gasping for that cheese 'n pickle butty!'

Whatever lunch you choose to pack in your rucksack, savour it in the company of likeminded others. Take a look on our website and see where we're heading next weekend.

Fancy joining us? Check what we have planned for the coming weeks by visiting our website.

www.chesterwalkingclub.com

Maria Owen, Press Officer, Chester Rambling and Hill Walking Club

CHESTER RAMBLING & HILL WALKING CLUB

We are a Chester-based walking club, offering up to 3 grades of walks on Sundays, and alternate Wednesdays, and a programme of short summer rambles on Tuesday evenings. The summer season also sees a flurry of camping activity, when we pack up our tents, hook up the caravans, book B & B's and cottages, and head off to destinations slightly further afield for a few days.

Led by experienced leaders, our Sunday and Wednesday walks last approx 6 hours, so bring picnic, flask and water. These hikes cover Snowdonia and North Wales, Cheshire, Shropshire, Lancashire and Derbyshire. Sorry - no dogs or under 18s allowed on our walks.

The club runs mid-week social evenings during the winter, including supper evenings, quiz nights and the ever popular Christmas party!

Why not come and join us on a trial basis without paying the fee?

Find out more by emailing chesramclub@yahoo.com or head over to our website for more details: www.chesterwalkingclub.com



All For You

HOME CARE WITH KINDNESS, DIGNITY & RESPECT

Rebecca Clifford

Having spent over 25 years in the care sector firstly as a qualified nurse. Then within a multi disciplinary team ensuring patients had the correct care package, equipment and services in place on returning home from hospital.

Following a move to the southwest I became a self employed health care assistant specialising in complex care and palliative care. Which enabled me to offer the highest standard of care and continuity required, which lots of care agencies around me struggled to offer.



I wish to offer my experience and services to clients in the Wirral and Cheshire area.

Please contact me on **07878 800584**
or email rebecca.afycare@gmail.com
www.allforyoucare.co.uk



DATES FOR YOUR DIARY

8th / 9th September 2018
Challenge
Tough Mudder half
(5 miles, 13 Obstacles)

7th October 2018
Run Chester Marathon

HOSPICE
OF THE GOOD SHEPHERD

ARK Jewellery Designs

by

Angela Ruth Kennedy

Beautifully Handcrafted Jewellery



commissions • repairs • sales • tuition • workshops

www.arkjewellerydesigns.co.uk | Tel: 07917 330790 | 01244 567012

DIARY DATES

SEPTEMBER




May - September 2018

Wild Worlds at Chester Zoo

Chester Zoo, Upton-By-Chester, Chester, CH2 1EU

This summer, something different is happening at Chester Zoo!

We're inviting you to a one-of-a-kind celebration. A festival made for everyone.

Discover NEW spaces within the zoo's favourite places, experience head-turning moments, breath-taking experiments and pop up performers!

Let your imagination roam wild and explore wonderful WILD WORLDS at Chester Zoo.

We want you to experience a whole new dimension to Chester Zoo, one we're creating in collaboration with talented artists, landscape designers, scientists and entertainers.



2nd - 4th September 2018

Nantwich Food & Drink Festival

www.nantwichfoodfestival.co.uk

Fantastic free food & drink festival in the heart of historic Nantwich. For one long weekend each September, Nantwich is transformed into a food lovers paradise, with two marquees full of top quality food and drink producers from Cheshire, all around Great Britain, as well as a wide variety of street food stalls. This year there will be later opening hours on Friday, with exciting entertainment and delicious food all evening.



14th and 15th September 2018

WEST END TO BROADWAY

7.30pm,

St Mary's Creative Space, Castle Street, Chester, CH1 2DW

Chester Operatic Society present a mix of solo performances, ensembles and full choral pieces, from some of the best-loved shows that have graced the West End and Broadway, at St Mary's Creative Space, Castle Street, Chester, CH1 2DW.

Tickets cost £10.

To book tickets, call 01244 375662 or visit <https://www.ticketsource.co.ukchesteroperatic>



Sunday 16th September 2018

Essar Guilden Sutton 10K

(previously the "Sutton Six")

@ 11:00. Entries open (online only). www.westcheshireac.co.uk/races

The 10K start is about 500 metres from Guilden Sutton Village Hall (Race HQ, number/chip collection & where the finish is). The course has two loops, the first 3.2K followed by a larger loop. The first 4.2K undulates, passing twice under and once over the A55 bypass, after which the course is fairly flat. There is a drinks station at approximately 6.8K where the footpath is wide, the footpath then takes you to the lowest point of the course at 8K. There are then a couple of short rises to the finish at the Village Hall.

Please note there will be **NO ENTRIES ON THE DAY**. Entry cost is £9.00 for UKA Affiliated Runners (£2 Discount will be applied at checkout. Please ensure you use exactly the same name for your race entry as is on your UKA registration card)

22nd - 23rd September 2018

Arley Hall Food Festival

Arley, Northwich, Cheshire. CW9 6NA

Arley Hall is a stunning country house in the heart of Cheshire, in the village of Arley. Throughout the weekend, our visitors can enjoy unlimited free access to the extensive grounds and renowned gardens, including the adventure playground with Zipwire and sandpit. Our guests can also delight in the character and charm of Arley Hall itself.

Saturday 29th September 2018

The Chester Antiques, Collectors & Vintage Fair

Northgate Arena, Victoria Road, Chester CH2 2AU

The Northgate Arena has hosted an established and respected Antiques & Collectors Fair for many years now, a favourite with traders from across the UK.



09:00am - 15:30pm (TRADE EARLY)
£2.00, CONCESSIONS £1.50, CHILDREN FREE. Car Park £1
Shepherd & Williams
www.swfairs.co.uk, info@swfairs.co.uk
0781 622 0136 / 0774 897 2938

Sunday 30th September 2018

Foamtastic Colour Blast

Chester Racecourse
Tel: 01244 851091

Go from White to Bright and get sponsored to raise money for your local Hospice - get covered in a kaleidoscope of rainbow colours and incredi-bubble foam at our Foamtastic Colourblast.

Adults £16, Children £10
Family of 4 £40



**LIVING
FLOORS**
& more...

Wood Floor Specialists

A Family Business, Est 1997

Ted Todd Flooring
Quickstep
Livyn Luxury Vinyl
Floor Sanding

Opening Hours

Monday - Saturday



Unit 1B, Chester Trade Park, Bumpers Lane, Sealand CH1 4LT
Phone 01244 382416 | www.living-floors.co.uk | www.thesandingman.com



LIVING PLANTATION SHUTTERS & BLINDS

A Family Business, Est 1997

All types of made to measure
blinds supplied

CONSERVATORY SAIL BLINDS

VENETIAN

ROLLER

VERTICAL

ROMAN

SENSES

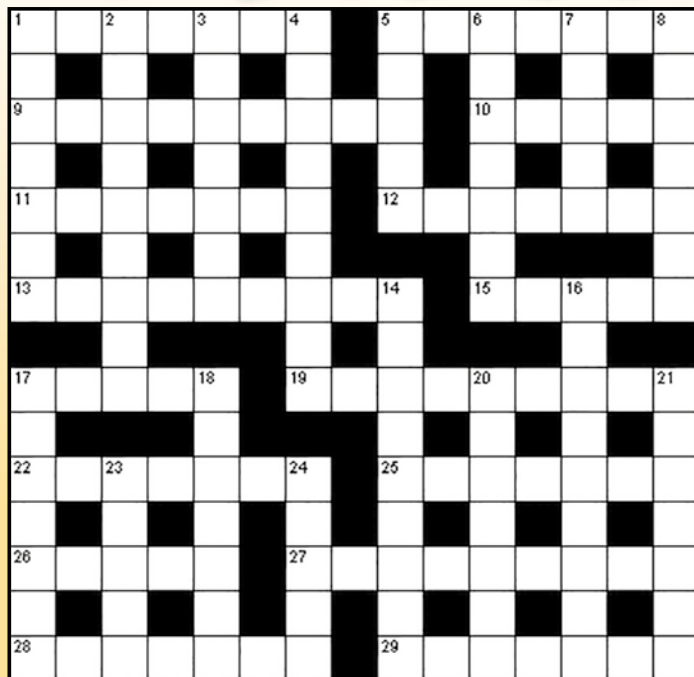
Opening Hours

Monday - Saturday



Unit 1B, Chester Trade Park, Bumpers Lane, Sealand CH1 4LT
Phone 01244 382416 | www.livingshuttersandblinds.com

PUZZLE CORNER



Down

1. Speediest (7)
2. Eradicate (9)
3. Hanging platform (7)
4. Hence (9)
5. Gambits (5)
6. Martyrs (7)
7. Tropical vine (5)
8. Profane (7)
14. Inordinate (9)
16. Artificial moon (9)
17. Custodian (7)
18. Grow worse (7)
20. Oblivious (7)
21. Withdraw (7)
23. Malfunctions (5)
24. Scrimp (5)

Across

- | | | |
|--------------------------------------|------------------|-----------------------------|
| 1. Cargo (7) | 13. Switch (9) | 26. Excuse (5) |
| 5. Spin (7) | 15. Impudent (5) | 27. Pseudo (9) |
| 9. Quietude (9) | 17. Place (5) | 28. After dinner treat (7) |
| 10. Seat (5) | 19. Meet (9) | 29. Any simple chemical (7) |
| 11. A part of a broadcast serial (7) | 22. Outcomes (7) | |
| 12. What Popeye ate (7) | 25. Red (7) | |

Sudoku Puzzle

How to play: The numbers 1 through 9 will appear once only in each row, column, and 3x3 zone. There are 9 such zones in each sudoku grid.

There is only one correct solution to each sudoku. Good luck!

Difficulty level: **Hard**.

Solutions can be found on our website:

www.love-chester.com

								2
	4	7			2			
				6	9	8		
		4				6		9
				8				5
9				1	5	2		
	9					1	2	
3						9		
2		6			7	4		



CALL TODAY TO BOOK AN APPOINTMENT

01244 541 482

Showroom opening times:

Monday to Friday 9am - 5pm | Saturday 10am - 5pm



Advertise with us and get great deals on your businesses printing needs! All professionally designed

Business Cards 250 on 350gsm card **£22**

2500 A5 Flyers on 150gsm silk **£58**

Letterheads 100 copies on 120gsm uncoated **£36**

A6 Invites with envelopes 50 on 350 gsm silk **£30**

Don't see what you are looking for the just ask!



Ask about our great new DEALS to advertise in 2018! Affordable advertising for YOUR business!

Call us today: **01244 555 244**

CHEAPER ADVERTISING RATES THAN MOST NEWSPAPERS & OTHER LOCAL MAGAZINES!

FREE DESIGN OF YOUR ADVERT! FREE PHOTOGRAPHY!

Love Chester the magazine of choice for all **local** businesses

Love Chester Magazine is delivered through:- Busy local high streets, our advertisers, local businesses, golf clubs, business centres, supermarkets, staff rooms, hotels, libraries, social clubs, garden centres, butchers, cafes, restaurants, bars, hairdressers, beauty salons, DIY stores, solicitors, opticians, take aways, churches, doctors, dentists, hospitals, council offices and office buildings with lots of staff!

We deliver to the following areas:- Chester City Centre, Handbridge, Boughton, Huntington, Christleton, Littleton, Vicars Cross, Hoole, Bache, Upton, Newton, Moston, Mollington, Blacon, Saughall, Saltney, Guilden Sutton, Mickle Trafford, Rowton, Waverton, Chester business park and Sealand Industrial Estate.

www.love-chester.com  

ONCE YOU HAVE READ ME PLEASE PASS ME ON TO SOMEONE ELSE!

Call: **01244 555244** or email: **info@love-chester.com**



Shop Smart. Shop Costco.

FREE GIFT

WHEN YOU SIGN UP FOR MEMBERSHIP WITH THIS ADVERT†

Costco Wholesale is a membership warehouse club, dedicated to bringing our members quality goods and services at the lowest possible prices.

We provide a wide selection of merchandise, plus the convenience of speciality departments and exclusive member services, all designed to make your shopping experience a pleasurable one. We are confident in the quality and value of our products, and we stand behind them with our guarantee of satisfaction.

The annual membership fee for Standard Trade Membership* is £22 ex VAT (£26.40 inc VAT). The annual membership fee for Standard Individual Membership* is £28 ex VAT (£33.60 inc VAT).

USE THIS ADVERT TO PREVIEW OUR CHESTER WAREHOUSE TODAY!‡



Costco Chester, Dunkirk Trading Estate, Chester Gates, Chester, CH1 6LT

T: 01244 852 071

E: marketing119@costco.co.uk

www.costco.co.uk

† Sign up for membership with this advert at our Chester Warehouse and receive a free gift. New members only. Offer valid until 31/05/19. * Membership Criteria applies. Please visit www.warehouses.costco.co.uk/membership for details. Accepted methods of payment: cash, debit card, cheque or American Express. Membership must be obtained before purchases can be made. ‡ ID required to preview.

Giving you more to smile about

There's life after tooth loss!

A new approach to dentures

Do your dentures cause:

- Frequent embarrassment?
- Difficulty speaking?
- Food restrictions?
- Sore spots and pain?

Our experts can help with our discreet personal denture services

What we do:

- The very best cosmetic dentures
- Implant retained dentures
- Relines to old dentures
- Additions to existing dentures



CALL NOW FOR A
FREE
CONSULTATION



Smiles & More
Denture clinics

01244 566 118 www.smilesandmore.co.uk

9 St John Street, Chester, CH1 1DA

