

# LOVE Chester

The Monthly Business & Community Magazine



ROTARY MEMBERS

June 2018  
Issue 16

Your **LOCAL** magazine delivered monthly in & around Chester

USE OUR ADVERTISERS TO KEEP CHESTER BUSINESSES MOVING  
FOR QUALITY, LOCAL and RELIABLE TRADES PEOPLE

I'm  
**FREE**  
Pick Me Up!



[www.love-chester.com](http://www.love-chester.com)  

ONCE YOU HAVE READ ME PLEASE PASS ME ON TO SOMEONE ELSE!

Call: **01244 555244** or email: [info@love-chester.com](mailto:info@love-chester.com)

Call us on:  
**01244 555032**  
**DURABASE**  
Advanced Base and Wall Systems for Conservatories

**PURE**  
CONSERVATORIES

CONSERVATORIES | HOME EXTENSIONS | ORANGERY

Your dream room with  
less mess and faster fitting



No need for forklift, digger or skip means less mess and waste to deal with. In addition, building with Durabase means a faster installation and a far better insulated room than seen with a traditional build.



A local family run firm you can trust

Email: [sales@pureconservatories.co.uk](mailto:sales@pureconservatories.co.uk)



[www.pureconservatories.co.uk](http://www.pureconservatories.co.uk)



**We are now open**

**SUNDAY** 9-6 pm

**MONDAY** 9-6 pm

**TUESDAY** 9-6 pm

**LATE NIGHTS**

**WEDNESDAY** 9-9 pm

**THURSDAY** 9-9 pm

**FRIDAY** 9-9 pm

**SATURDAY** 9-6 pm

**Cut & Finish** £20.00

**Colours**

**Full head highlights** £50.00

including cut & finish

**Half head highlights** £40.00

including cut & finish

**PERNICKETY HAIR CO**

**0151 355 3608**

L'ORÉAL  
PARIS

JOICO  
THE ART OF HEALTHY HAIR

HEAD  
CANDY

ghd

FUDGE

49 Chester Road, Whitby, Wirral

# WHAT'S IN THIS MONTH'S LOVE CHESTER MAGAZINE

14



**What's Happening At Our Zoo**

16



**Holiday Destinations Naples & Barcelona**

36



**Auto Review by Tony Yates**

40



**Create Your Own Nature Garden**

46



**Chester Rambling & Hill Walking**

## Love Chester

The Local Magazine for Businesses in and around Cheshire.

Do You Know?	12
What's Happening At Our Zoo	14
Holiday Destinations	16
Community News	22
Support Local Charities	24/28
Community News	29
International Chinese Martial Arts	31
Community News	32
Auto Review by Tony Yates	36
Create Your Own Nature Garden	40
Community News	45
Chester Rambling & Hill Walking	46
Diary Dates 2018	47
Puzzle Corner	48
Our Advertising Deals	50

Cover Photograph : Chester River Dee



**Dear Friends,**

**Summer is here at last!**

Longer days and lighter nights, lovely weather (fingers crossed), we always seem to fit much more into the day and I'm sure you will agree, people are much

happier in the sunshine.

Father's Day falls on Sunday 17th June, so now is the time to plan your gift. See our advertisers to get some inspirational ideas. Take a look at our 'What's On' guide for entertainment ideas.

Whatever you get up to, have fun and take care!

Don't forget to let our advertisers know you have seen them in **Love Chester** magazine.

Each month we run many editorials, from recipes and gardening to motoring and holiday destinations, plus Charities Events and Community News to name a few!

Keep up to date with us on facebook and our new facebook group, twitter & visit us at:

[www.love-chester.com](http://www.love-chester.com)

Best Wishes  
Maxine & Mike



Circulation of this **FREE** magazine is distributed to Chester and its surrounding villages.

Love Chester Magazine Limited Registered Office: 1st Floor 12 Church Road, Gatley, Cheadle, Cheshire, SK8 4NQ

Company Number: 10588054

"Love Chester" is produced by an independent organisation; which is not connected to any other organisation, publication or groups. All material is copyrighted and no part of this publication may be reproduced or transmitted without the written permission of the copyright holder.

Please note that we do not endorse any products or services of any advertisers. All advertisements and their content are accepted in good faith. Responsibility for copyright and the accuracy of the information provided lies with the advertiser.

# OUTDOOR AND COUNTRY

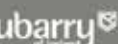
*The store where style meets tradition*

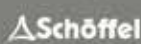


As modelled by the Chester store


Chester's leading stockist of...

  
FAIRFAX & FAVOR  
ENGLAND

  
dubarry  
of ireland

  
Schöffel

  
GANT

  
Barbour

8-10 Lower Bridge Street, Chester CH1 1RS Tel. 01244 311 770

Opening Times Monday-Saturday: 09:30 – 17:30 Sunday: 11:00 – 17:00 Bank Holidays: 11:00 – 17:00

*Click and collect – order online and collect free from selected stores.*

[OUTDOORANDCOUNTRY.CO.UK](http://OUTDOORANDCOUNTRY.CO.UK)

Also at... \*BLACKBROOK | EVESHAM | \*KNUTSFORD | \*SHREWSBURY | 'STREET | TRENTHAM

NOT ALL ITEMS ARE STOCKED AT ALL STORES, PLEASE CHECK BEFORE TRAVELLING. \*STOCKS BARBOUR ITEMS ONLY 'OUTLET STORE



## DEE REFRIGERATION

Commercial refrigeration & Catering equipment

Covering Chester, Wrexham & Surrounding areas

We specialise in the repair, maintenance and service of all commercial refrigeration and catering equipment listed below.

- We pride ourselves in reliability and focus on providing the best service possible for our customers, with over 35 years experience combined, we have the technical knowledge and expert engineers on hand ready to assist you with your problem 24/7.
- We maintain a 90% first fix rate on all breakdowns due to our extensive van stock.

- Bottle Cabinets
- Ice Machines
- Cellar Cooling
- Freezers
- Cold Rooms
- Multi Deck Chillers
- Glass Washers
- Dish Washers
- Air Conditioning



**0759 888 27 27**

[WWW.DEE-REFRIGERATION.COM](http://WWW.DEE-REFRIGERATION.COM)

Call Sean - **NO CALL OUT CHARGE**

# 'A'-SMART CLEARANCES



**CALL TODAY FOR A FREE QUOTATION!**  
Excellent rates

## We carry out all types of clearances such as:

- Garden Shed
- Office Clearance
- House Clearance
- House Moves
- Single Item Pickups
- Removals
- Estate Agents

*Fast and friendly service, discreet and courteous*

**Telephone Martin**

**Call: 07783 235 593**



## Accelerate Tutoring

The caring, motivational tutoring experience

Tutoring for SATS, KS1, KS2, 11+ and independent school preparation

100% success to Kings, Queens and Abbeygate for 13 years

Outstanding results in 11+

[www.acceleratetutoring.co.uk](http://www.acceleratetutoring.co.uk)  
[info@acceleratetutoring.co.uk](mailto:info@acceleratetutoring.co.uk)

## LPW PLUMBING SERVICES

*Your Local Emergency Plumber*

- 24 HOUR PLUMBING
- ALL GENERAL PLUMBING REPAIRS UNDERTAKEN
- PLUMBING MAINTENANCE
- ALL BLOCKAGES
- BATHROOM DESIGN & INSTALLATION
- ALL WORK FULLY INSURED

WIAPS - Water Industry Approved Plumbing Scheme

Call Lawrence on:

**07738 462315**

01928 898375 (After 6pm)

[www.lpwplumbingservices.co.uk](http://www.lpwplumbingservices.co.uk)

[info@lpwplumbingservices.co.uk](mailto:info@lpwplumbingservices.co.uk)





# Titan

PROPERTY SERVICES LTD.

## Your Local Electrical Specialists

**We provide all electrical work  
for residential, commercial  
and industrial**

**Services include:**

- Full electrical installations
- Electrical repairs and maintenance works
- Lighting installations and repairs
- Emergency lighting supply and testing
- House and office rewiring
- Circuit panel upgrades
- Full system design
- Compliance checks and certification

Call on our experts today  
for a free quote and advice

**01244 621871**

[www.titanpsltd.co.uk](http://www.titanpsltd.co.uk)



**Let Ovensclean  
take care of one  
of the most hated  
household chores!**

- ✓ Locally based
- ✓ Friendly, professional, reliable & tidy
- ✓ No fumes, no mess, no bother

Unique cleaning system removes  
grease, fat and burnt on carbon  
deposits from:

- Ovens
- Grills
- Extractors
- Filters
- BBQs
- Microwaves
- Hobs
- Ranges
- AGAs

Call Peter Davies on

**0800 840 7127**

[www.ovenclean.com](http://www.ovenclean.com)

**OVENCLEAN®**  
*The original oven cleaning specialists*



Imagine

# Dry Carpet Cleaning

"no soggy carpets or wet dog smell in your home"

We have dry cleaned carpets & upholstery in 100's of homes

You will  our dry cleaning system!

**We also clean...**

Have 3 PIECE SOFA CLEANED get **50% OFF** further carpet cleaning + Free Stain Guard

**Upholstery**



**Leather & Fabric** with super fast drying

**Hard Floors** with Anti Slip Coating



**Tiles inc Grout • Stone Kardean & Amtico**

**Wooden Floors**



**Sandless Wooden Floor Restoration**

**Locally based family run business,**

**Call us for FREE on**

**0800 180 4983**

**zerodrytime.com**

**zero  time**

Dry Carpet, Upholstery & Hard Floor Cleaners



# FUN IN LINE

 **LINE DANCING**   
**INTERMEDIATE CLASS**  
**EVERY WEDNESDAY**

**10:30AM TO 1:00PM**

at

**UPTON COMMUNITY HALL**

Demage Lane, Upton, Chester CH2 1EL

Contact: Vicky on 07725 052189

Email: [cjbritlin@btinternet.com](mailto:cjbritlin@btinternet.com) or

message on FaceBook Victoria Britlin



Regular Cleaning  
One Off Cleans  
Housekeeping Services  
Tenancy Pre & Post  
House Moves  
Commercial Cleaning  
Carpet Cleaning  
Ironing Service

Contact Us

01244 350700

01829 730969

Email: [info@mollymop.co.uk](mailto:info@mollymop.co.uk)



# FIREPLACES



- 5 kw Stove • Pipe • Plate
- Installation including all building work
- Slate tiled or granite hearth

**£1295**

If a liner is required

**£1749**

**Chester Fireplace and Heating Centre Ltd**

**2 High Street  
Saltney**

**CHESTER CH4 8SE**



- Marble Fireplace
- 4.0 kw Gas Fire or 2 kw Electric Fire

**Including  
Installation**

**£799**



- 4.9 KW High efficiency
- Glass Fronted hole in the wall fire remote control
- Choice of trim finish
- Choice of fuel bed

**Including  
Installation**

**£1099**



- 54 or 48 inch creme marble fireplace
- 4.0kw gas fire or 2 kW electric fire

**£795**

**Chester Fireplace**  
& HEATING CENTRE LTD

**Tel: 01244 678714**  
[www.chesterfireplaces.com](http://www.chesterfireplaces.com)



# BECOME

A BETTER PLAYER

Guitar School offers outstanding music tuition to all ages and abilities as you work towards a qualification in acoustic, bass, classical, electric and rock guitar, as well as ukulele and piano.

Choose your favourite songs by the artists you love whilst learning essential techniques to become a better musician.



Connect with us @guitarschooluk

01244 536888

info@guitarschool22.co.uk

guitarschool22.co.uk

ZevTech UK Ltd  
8 Water Street  
Liverpool  
L2 0RD



ZevTech UK Ltd,  
24th Floor, The Shard  
32 London Bridge St  
London SE1 9SG

## Is your business suffering from poor internet speeds?

We can help your business with guaranteed upload and download speeds.  
Fibre and Wireless connections available.

Business Broadband Connections,  
VoIP, Mobiles, Landlines.

**10% DISCOUNT** - for Love Chester readers



[www.zevtechuk.co.uk](http://www.zevtechuk.co.uk)  
Gareth@zevtech.co.uk

# cheshire joinery *services ltd*

Bespoke hardwood windows and doors



Join us for a workshop tour and have a bag of briquettes on us!!

Unit 1b, Barrowmore Estate, Gt Barrow, CH3 7JA  
[www.cheshirejoineryservices.com](http://www.cheshirejoineryservices.com)  
[info@cheshirejoineryservices.com](mailto:info@cheshirejoineryservices.com)  
**Tel: 01829 741751**

# DO YOU KNOW?

1. The term "pipe dream" is a reference to the insane dreams people have when smoking opium.
2. Before he was a famous musician, Johnny Cash was a military code breaker for the US Air Force.
3. A 'bobsled' is so named because early racers bobbed their heads back and forth to gain speed (which didn't work).
4. The first manager of the first McDonald's franchise was called Ed MacLuckie.
5. Chicago has over 60 coyotes fitted with radio collars roaming the city, eating small rodents, especially rats and voles.
6. A whole orange will float on water, but a peeled orange will sink.
7. John F. Kennedy's Eternal Flame in Arlington National Cemetery has only gone out twice since 1963.
8. Iceland is so safe that parents routinely leave their babies alone to nap outside in their strollers while they run errands.
9. Male layer chicks don't produce eggs nor do they have enough meat on their bodies for eating, so they are killed immediately by egg producers after hatching.
10. A study found that a man named Robin Gunningham is probably the street artist Banksy, based on geographic profiling of Banksy's artwork.
11. While filming the movie "Entebbe," about a plane being hijacked, a plane was actually hijacked and landed at the airport. They filmed the real hostages being released and edited it into the movie.
12. Richard Nixon was an accomplished musician who could play the piano, accordion, violin, saxophone, and clarinet.
13. The Moon gets hit by over 6,000 pounds (2800 kg) of meteor material per day.
14. A study found that orcas can learn to speak dolphin.
15. In 1494, Michelangelo at the age of 19 was commissioned by the ruler of Florence to sculpt a snowman in his mansion's courtyard.
16. 33% of the bread produced in the UK is wasted, compared with 6% of the alcohol.
17. An elderly woman slept through the People's Temple mass suicide in Jonestown. She woke up the next morning to discover the bodies of over 900 members of the cult.



18. Vicodin's name is based on it being approximately six (VI is 6 in roman numerals) times stronger than codeine.
19. Pink Floyd's Dark Side of the Moon album was on the Billboard charts for a total of 741 consecutive weeks from 1973 to 1988.
20. Prisoners on Alcatraz always had hot showers so they didn't get acclimatised to cold water and try to escape by swimming.
21. Las Vegas airport has set up a bin outside one of the entrances for people who forgot they were carrying drugs on them.
22. Monaco has the most millionaires and billionaires per capita.
23. A party boat carrying sixty men and women capsized in Texas in 2012 after all the passengers rushed to one side as the boat passed a nude beach.
24. The only difference between fog and mist is visibility: if you can't see more than 100 metres ahead, it's fog, not mist.
25. Prior to 1868, eating meat from four legged animals had been prohibited in Japan for more than a thousand years.
26. Al Pacino turned down the role of Han Solo.
27. Russell Crowe turned down the role of Morpheus in The Matrix.
28. The Dutch army had only one tank during WWII.



29. Porsche's first car, in 1898, was electric.
30. A nurse in Italy was accused in 2014 of killing 38 patients because she thought they were "annoying."
31. The Mayor of Bogotá, Colombia, once hired 420 mimes artists to make fun of traffic violators because he believes Colombians fear ridicule more than being fined.
32. A study says 13.9 Million people call in sick or arrive late to work the day after the Super Bowl.
33. "Scooby-Doo, Where Are You!" was originally called "Who's S-S-Scared?"





# Sherlocks

*Big Enough To Manage — Small Enough To Care*



## Dear Residents

At Sherlock Estate Management we specialise in the day to day running of apartment blocks, large and small both locally and throughout the region. We are a friendly company and have been established since 1986 in the centre of Liscard, which is located in Wallasey, Wirral.

We are pleased to have an opportunity to offer you our services as estate managers. We do appreciate considering a management company can be a delicate decision but we can assure you that we are **100%** confident that we can help you. With this in mind we would be more than happy to call and see you, or you are more than welcome to visit us here at our office. Our time is your time.

We feel residential management requires a personalised approach and given the opportunity, we will endeavour to familiarise ourselves with you and your property and match our service to your requirements, this is something we pride ourselves on.

The items below illustrate a number of day to day tasks that we can administer on your behalf:

***Service Charge Collection***  
***Legal Matters***  
***General Cleaning***  
***Gardening***  
***Window Cleaning***  
***Decorating***  
***Maintenance***  
***Insurance Policies***  
***Annual Accounts***  
***Neighbourly Issues***

*We can arrange new or retain existing contractors and can help with as much or as little as you need.*

Sherlock House, Manor Road, Wallasey, Wirral, CH45 4JB

**Telephone: 0151 638 8160**

**[www.sherlockpropertymanagement.co.uk](http://www.sherlockpropertymanagement.co.uk)**



# OUR ZOO

What's  
happening  
at Chester Zoo.

**Baby orangutan born at Chester Zoo  
'is a girl'**





# OUR LATEST NEWS & EVENTS

- **Rare baby Sumatran orangutan is named Kesuma**
- **Zookeepers reveal her name translates to 'flower' in Indonesian**
- **Kesuma is a big boost to the international breeding programme for critically endangered Sumatran orangutans**
- **Orangutans are on the edge of extinction as their forest home is destroyed to make way for unsustainable palm oil plantations**
- **Zoo conservationists are fighting to protect wild orangutans in South East Asia**

## Chester Zoo reveals its latest orangutan arrival has been named Kesuma by primate keepers.

Chester Zoo's rare newborn Sumatran orangutan has been named Kesuma, which means 'flower' in Indonesia.

The name was chosen by the zoo's team of primate keepers soon after they were able to confirm the newcomer's gender.

Kesuma was born to mum Emma in December in what was a major success story for an acclaimed international breeding programme for the highly threatened species.

Sumatran orangutans are listed as critically endangered by the International Union for the Conservation of Nature (IUCN) with recent estimates suggesting just 6,500 remain in the wild.

Tim Rowlands, Curator of Mammals at the zoo, said:

*"Emma's baby girl Kesuma is her fifth youngster and she's such a good mum. She's incredibly attentive and it's wonderful to see her and her latest arrival forging close bonds.*

*"She's an incredibly important arrival for the conservation breeding programme and can hopefully throw a spotlight on the huge pressures that her cousins are facing in the wild."*

The Sumatran orangutan is one of the world's most endangered great apes. It is among the many species being pushed to the brink of extinction in South East Asia by hunting, forest clearance and the planting of oil palm plantations, which are destroying vast areas of rainforest.

There is intense demand for the oil, which features in all sorts of every day products in the UK from food to cleaning materials and cosmetics.

Chester Zoo is currently leading a major new campaign to make Chester the world's first 'Sustainable Palm Oil City.' Zoo conservationists are working with restaurants, cafes, hotels, fast food outlets, schools and workplaces in the city to introduce sustainable palm oil policies into their supply chain. The campaign is striving to increase the use of palm oil that is produced sustainably and help to protect the rainforests of South East Asia.

Chester Zoo is currently the only zoo in mainland Britain which cares for Sumatran orangutans.

## Sumatran Orangutan Facts

- **Kesuma was born early in the morning of Monday 18 December**
- **The new arrival is the fifth for mum Emma (age 30)**
- **Dad is named Pulu (30)**



# HOLIDAY DESTINATIONS

# NAPLES

## WITH BARCELONA STAY



**R**omantic Naples, just two hours south of Rome, is the largest city in southern Italy. It has some of the world's best opera houses and theatres, and is often called an open-air museum, because of its many historic statues and monuments. Join families on promenade as the sun sets on the Bay of Naples. View finds from Pompeii and Herculaneum, destroyed by Mount Vesuvius in A.D. 79, at the Museo Archeologico Nazionale or revel in the art and architecture of Museo Cappella Sansevero, built in the late 1500s.

Visiting a city such as Naples means, of course, a diverse schedule of sightseeing; exploring its museums, art galleries, and nicest streets for strolling. While a week would do this phenomenal city more justice, one day is still enough to get lost in the alleys of its Spanish quarters (and observe the genuine life of the Neapolitans), enjoy a fantastic pizza, and relax in a prestigious coffee spot such as Gambrius. Be prepared to get up very early and put on your running shoes!

Naples has very good public transportation and lots of traffic problems so it's best to avoid having a car. The city has a large but crowded bus network, trams, a subway, funiculars, and a suburban train line, the Ferrovia Circumvesuviana, that will get you to Herculaneum, Pompeii, and Sorrento.

Pizza, one of Italy's most famous foods, originated in Naples and pizza is taken very seriously here. You'll find lots of great pizza places

but be sure you look for one with a wood-burning oven!

Eggplant Parmesan originated in Naples and spaghetti also became popular in Naples, try it with clams or mussels. Seafood is abundant and very good in Naples.

Naples gets quite hot in summer so spring and fall are probably the best times to visit. Since Naples is near the coast, it's more temperate in winter than interior cities of Italy.

As you are only in Naples for 1 whole day from the ship, enjoy the other great places such as your stay in Barcelona.

See the best of Barcelona on a private sightseeing tour, which offers a comprehensive view of this exquisite Catalan city and includes skip-the-line access at La Sagrada Familia, a popular attraction that often has long lines. Perfect for first-time visitors, the tour will show you the city's most iconic sights and allow you to discover some of Barcelona's best-kept secrets. You'll also visit the hill of Montjuïc and the Gothic Quarter, and you can upgrade to the full-day tour to include visits to Park Guell and La Pedrera. Accompanied by your own private guide, you'll enjoy personalized attention on this special private tour.

Barcelona's architectural treasures span 2000-plus years. Towering temple columns, ancient city walls and subterranean stone corridors provide a window into Roman-era Barcino. Fast forward a thousand years to the Middle Ages by taking a stroll through the shadowy lanes

of the Gothic quarter, past tranquil plazas and soaring 14th-century cathedrals. In other parts of town bloom the sculptural masterpieces of Modernisme, a mix of ingenious and whimsical creations by Gaudí and his Catalan architectural contemporaries. Barcelona has also long inspired artists, including Salvador Dalí, Pablo Picasso and Joan Miró, whose works are in bold display in the city's myriad museums.

Barcelona is an enchanting seaside city with boundless culture, fabled architecture, and a world-class drinking and dining scene.

### BARCELONA



If you would like to visit NAPLES with a BARCELONA STAY, then visit [WWW.CRUISEINATION.COM](http://WWW.CRUISEINATION.COM)  
Visiting:-  
BARCELONA, MARSEILLE, GENOA, NAPLES, MESSINA, VALETTA, AND THEN BARCELONA.

Cruise Ship: MSC Bellissima  
Cruise Line: MSC Cruises  
Start Date: 28th March 2019  
**FREE STAY & FLIGHTS INCLUDED**  
Duration: 8 Nights  
ONLY: **£549.00**





Shop Smart. Shop Costco.

# FREE GIFT

WHEN YOU SIGN UP FOR MEMBERSHIP WITH THIS ADVERT†

Costco Wholesale is a membership warehouse club, dedicated to bringing our members quality goods and services at the lowest possible prices.

We provide a wide selection of merchandise, plus the convenience of speciality departments and exclusive member services, all designed to make your shopping experience a pleasurable one. We are confident in the quality and value of our products, and we stand behind them with our guarantee of satisfaction.

The annual membership fee for Standard Trade Membership\* is £22 ex VAT (£26.40 inc VAT). The annual membership fee for Standard Individual Membership\* is £28 ex VAT (£33.60 inc VAT).

**USE THIS ADVERT TO PREVIEW OUR CHESTER WAREHOUSE TODAY!‡**



**Costco Chester, Dunkirk Trading Estate, Chester Gates, Chester, CH1 6LT**

**T: 01244 852 071**

**E: [marketing119@costco.co.uk](mailto:marketing119@costco.co.uk)**

**[www.costco.co.uk](http://www.costco.co.uk)**

† Sign up for membership with this advert at our Chester Warehouse and receive a free gift. New members only. Offer valid until 31/05/19. \* Membership Criteria applies. Please visit [www.warehouses.costco.co.uk/membership](http://www.warehouses.costco.co.uk/membership) for details. Accepted methods of payment: cash, debit card, cheque or American Express. Membership must be obtained before purchases can be made. ‡ ID required to preview.



**LIVING  
FLOORS**  
*& more...*

## Wood Floor Specialists

A Family Business, Est 1997

**Ted Todd Flooring**  
**Quickstep**  
**Livyn Luxury Vinyl**  
**Floor Sanding**

**Opening Hours**

*Monday - Saturday*



Unit 1B, Chester Trade Park, Bumpers Lane, Sealand CH1 4LT  
Phone 01244 382416 | [www.living-floors.co.uk](http://www.living-floors.co.uk) | [www.thesandingman.com](http://www.thesandingman.com)



## LIVING PLANTATION SHUTTERS & BLINDS

A Family Business, Est 1997

All types of made to measure  
blinds supplied

**CONSERVATORY SAIL BLINDS**

**VENETIAN**

**ROLLER**

**VERTICAL**

**ROMAN**

**SENSES**

**Opening Hours**

*Monday - Saturday*



Unit 1B, Chester Trade Park, Bumpers Lane, Sealand CH1 4LT  
Phone 01244 382416 | [www.livingshuttersandblinds.com](http://www.livingshuttersandblinds.com)



**We supply and install coloured glass splashbacks.**  
**\*\*Coming soon new sparkle and marble effects\*\***



## BUILDING

*We understand the importance of achieving a customer's vision and needs.*

*Every project is completed to the highest quality and customer satisfaction is imperative.*

*We aim to give customers confidence that we will keep disruption to a minimum and always work within a safe, clean and tidy environment.*

## GLAZING

*We are professional installers of windows, doors, bi-folds and frameless glass extensions.*

*Elliott Build & Glaze Ltd is a Fensa registered company and we are able to provide a 10 year insurance backed guarantee.*

## PLANNING

*From first contact with the customer to completion of the project, Elliott Build & Glaze Ltd can provide all services required to meet your needs, from full architectural design to the final fitting of the flooring. We aim to make this experience as enjoyable and stress-free as possible.*



**T: 0151 336 6925**



**TIMESERVED  
TRADESMEN**



**TRUST  
MARK**  
Government Endorsed Standards  
www.trustmark.org.uk

Conservatory Erectors

Window Installers & Glaziers



**FENSA**  
Registered Company

**[www.elliottbuildandglazeld.co.uk](http://www.elliottbuildandglazeld.co.uk)**

Email: [elliottbuildandglazeld@live.com](mailto:elliottbuildandglazeld@live.com)

Elliott Build & Glaze Ltd is a trading name of S R Elliott Build & Glaze Ltd.

# GOLD & SILVER ROADSHOW

A very lucky couple called at one of our recent roadshow events with a couple of old gold chains and a silver charm bracelet and a bag of old silver British coins. We paid them over £1600.00 just for the coins alone. They turned out to be pre 1947 silver coins that were normal currency a few years ago and are now highly collected. We asked them for their permission to pass on this story to help other people realise what they may be sitting on and they were only too pleased to allow us to let everyone know that they might be sitting on a goldmine and not even know it! Like most people, who can only dream of winning the pools or the lottery, a lot of normal households have a hidden treasure of old gold jewellery, silver jewellery, teapots, trophies, trays and old objets d'art.

Why not get a free valuation from our expert at our roadshow at:  
at THE DENE HOTEL, 95 HOOLE ROAD, CHESTER, CH2 3ND

There is no queuing and our expert will give you a one on one appraisal of the value of your treasured possessions in a private area, where there are no prying eyes, watching the process evolve. If you like the valuation our expert will make you the same offer in cash which you can accept or decline at no cost to yourself. The whole process of valuation is free of charge and very private, so you have nothing to lose and a lot to gain.

## WHAT DO YOU HAVE WAITING TO BE DISCOVERED

Many people are totally unaware of the value of unusual and old items that they own and are just hidden away in drawers around the house. Dealers are now paying record high prices for old jewellery and gold and silver objects and collectables. Most unusual gold and silver items are no longer fashionable but there are still collectors who we deal with that will pay record high prices for your old gold and silver jewellery, and items. Wristwatches and old fashioned pocket watches can surprise you with their values and you will be amazed by the amount that is currently being offered for such items. Get looking NOW in your old drawers, cupboards, and jewellery boxes. Look in the attic and the cellar, even old broken or squashed items of jewellery and silver are valuable and worth having appraised at these free roadshows. Bullion Investments & Acquisitions are having such a roadshow at THE DENE HOTEL, 95 HOOLE ROAD, CHESTER, CH2 3ND.

They will be offering a free valuation service and they will make you an instant CASH offer to buy your old jewellery, gold and silver or any old silver or coins that you may have.



Things that you should look for and bring to our roadshows are absolutely anything that looks like jewellery, whether it is yellow gold, silver or platinum. Any old British or foreign coins. Any old wrist watches or pocket watches. All chains, bracelets, rings and bangles broken or not and in any condition. If you think it is a diamond ring, bring it along and we will confirm it to be genuine. If you have an old trophy or tankard or any silver coloured items, let us value them for you.

## COINS & MEDALS AND OLD MILITARY UNIFORMS URGENTLY WANTED

Old war medals and old Masonic medals can be very valuable. You will be surprised to hear that we have paid THOUSANDS of pounds for certain war medals and even the General Service Medal group is worth bringing especially if you have the original box and letters to accompany them. Also of great interest are old military uniforms, tunics, hats and any army, navy or RAF field gear.



There are rarely any queues at our events and we can normally attend to every caller within a few minutes. We will give you a free valuation which we back up with a cash offer, there and then. You can accept or decline our offer, so come along and see what we can offer for your old gold or silver jewellery, coins and collectables.

## WANTED NOW

Krugerrand, Maples and Sovereigns are urgently wanted for top prices.



## OF PARTICULAR INTEREST

Gold and Silver cigarette cases, Vesta Cases, thimbles, Candle sticks, trays and all things silver are needed. Pocket watches in gold and silver and all wristwatches by: Rolex, Cartier, Omega, Longine, IWC are particularly collected



**FOR 2 DAYS ONLY! FRIDAY & SATURDAY 27th & 28th APRIL**

We will buy your

# **GOLD & SILVER WANTED for CASH**

Simply bring us your unwanted gold jewellery even if it's broken or has no hallmark and we will buy it from you, at:

## **DENE HOTEL**

**95 HOOLE ROAD, CHESTER, CH2 3ND**

**WEDNESDAY & THURSDAY 13th & 14th JUNE**

### **WANTED FOR CASH**

**ALL PRE-1947**

**SILVER COINS**

AND ALL FOREIGN

**SILVER COINS WANTED**

At least 10 times face value



Silver Trays, Silver Teapots, Silver Cigarette Cases, Silver Knives & Forks and Trophies

Broken or any condition chains

in 9ct gold or any other gold



**Dental Gold, Gold Teeth, Old Bracelets & Bangles & Pendants**

Any Silver Items, Chain Rings and Bracelets



**Gold Coins in any condition for cash**  
Sovereigns, Krugerrands, Maples



All Gold Watches & Silver Watches



**Gold & Platinum Diamond Rings**  
9ct, 18ct & 22ct Wedding Rings



All Platinum Jewellery & Antique Jewellery



**For 4 days only at the DENE HOTEL, CH2 3ND**

**95 HOOLE ROAD, CHESTER. 10:30am - 4:00pm. Free Parking at the hotel.**

**Telephone: 07378 965411, for personal attention**



# COMMUNITY NEWS

Have Your Say - Tell Us & We'll Print It!

Email us @: [info@love-chester.com](mailto:info@love-chester.com)

## CHESTER TOWN HALL

### will be the venue for a Fine Art Extravaganza in June.

Local artist and lecturer Sue Farrington is excited about the two-day event which will present an opportunity for the public to buy pieces of original work direct from artists.

"I teach oil painting in the North West of England," said Sue. "Over many years I have become increasingly aware of the need for artists to be able to show and sell their work directly to the public. So many of these fabulous artists have fabulous original paintings that rarely get seen.

"Art is for everyone - by joining local Art Groups, Art Classes and Art Societies or visiting galleries and exhibitions. It opens up a whole new world whatever your age.

"I have enlisted 34 other eager professional and amateur artists to display and sell their original work.

"The Fine Art Extravaganza is a two-day event which will take place on June 2 and 3, between 10.30am and 6pm on both days."

Sue specialises in oil painting and has lived, taught and exhibited in Australia, New Zealand, Borneo, Malaysia and the Philippines. It was in Borneo where Sue attended Art College.

She studied for her teaching qualification at Darwin University in the company of jackaroos, jillaroos, outback prison officers and nurses while her late husband was working on the construction of the Alice Springs to Darwin Railway Bridges.

In complete contrast her previous occupation was Piping Process Works Administrator on the installation of a new Nuclear Reactor vessel in Engadine Sydney.

Returning to the UK in 2005, Sue worked at Burton Manor, and West Cheshire College, in Handbridge, Chester.

Sue currently teaches in Chester, at Caldley Valley Church Centre, Okell's Garden Centre, Tarporley, and at the Altrincham Art Society, Manchester, and is a member of Chester's Grosvenor

Art Society who hold regular exhibitions, demonstrations and workshops.

She also demonstrates and runs successful oil painting workshops throughout the North West and North Wales, exhibiting and selling with Silver Star Gallery.

During the English winter Sue returns to paint and exhibit in Perth, Western Australia, where she taught, exhibited and sold at the Atwell and Heathcote Galleries.

Sue also organises painting holidays to France, in conjunction with Hoteliers Rachael et Alain Savouré from Hôtel les Grands Chênes St Fargeau Burgundy.

The Plein Air Painting Programme is designed for small groups of artists to enjoy painting everything the amazing area has to offer. Including Chateau de Saint-Fargeau, Guédelon Castle (featured on BBC TV on January 21, 2015).



*IN THE FRAME -*

*Sue Farrington with one of her oil paintings*





CALL TODAY TO BOOK AN APPOINTMENT

**01244 541 482**

Showroom opening times:

Monday to Friday 9am - 5pm | Saturday 10am - 5pm



# PLEASE SUPPORT LOCAL CHARITIES

This page is dedicated **FREE** to all registered Charities who wish to advertise.

## To everyone in our local community.....

Local residents are being encouraged to sign up as a volunteer for the Chester Sparkle Night Walk which will take place on Friday 15th June, in aid of Hospice of the Good Shepherd

More than 75 volunteers are needed to marshal the route and help with setting up the event to ensure that all participants can take part safely.

Justin Caroe, Hospice Community Fundraiser, said: "Our Chester Sparkle Night Walk is reliant on an army of enthusiastic volunteers to be a success. Their presence is paramount to keeping it running smoothly and safely."

The Chester Sparkle Night Walk starts at Grosvenor Park and will see hundreds of walkers 'sparkle' under the stars. The 5km circular route through Chester City Centre passes iconic buildings and locations along the way including: Chester Cathedral, Eastgate Clock, Chester Racecourse and finishes within the Amphitheatre.

Justin added: "The Hospice relies on donations for the majority of its income, so events like the Chester Sparkle Night Walk are a vital way of raising funds.

There is always a fantastic atmosphere, so I'd encourage everyone to come along and be part of an incredible event that helps support the only adult hospice in Chester."

The Hospice of the Good Shepherd doesn't make a charge to patients for using the services but it does cost £11,000 per day for the hospice to provide the necessary care and support.

Volunteers will need to be on-site from 7pm until around 1am depending on the role and refreshments will be provided. If you would like to volunteer your help please email fundraising@hospicegs.com or call 01244 851 811. If you are interested in taking part in the event please sign up here <https://www.tickettailor.com/events/hospiceofthegoodshepherd/146159>

*Pic caption: Caroline Siddall, Director of Fundraising, Lottery and Retail outside banner at Grosvenor Park*

**HOSPICE**  
OF THE GOOD SHEPHERD



For more information, please contact:

**Julie Charlton on 07860 846242**  
[julie.charlton@hospicegs.com](mailto:julie.charlton@hospicegs.com)

**Hospice of the Good Shepherd,**  
Gordon Lane, Backford,  
Chester CH2 4DG

**Telephone: 01244 851091**  
[www.hospicegs.com](http://www.hospicegs.com)



Call us on:  
**01244 555032**

**PURE**  
CONSERVATORIES

CONSERVATORIES | ORANGERIES | REPLACEMENT GLASS | LOCKS

Transform your  
conservatory into  
an all year round  
living space



The only system that comes with planning consent.  
Call us today for a **FREE** quotation.



**BEFORE ROOF INSTALLED**

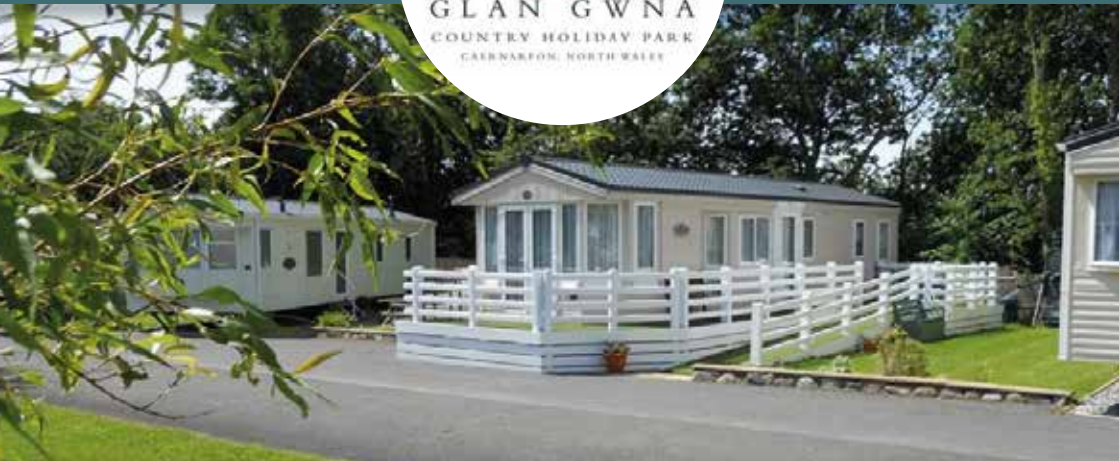


**AFTER ROOF INSTALLED**

*A local family run firm you can trust*

Email: [sales@pureconservatories.co.uk](mailto:sales@pureconservatories.co.uk)

**[www.pureconservatories.co.uk](http://www.pureconservatories.co.uk)**



REPUTATION BUILT ON RECOMMENDATION



## HOLIDAY HOMES FROM £11,995

01286 67 3456

[WWW.GLANGWNA.COM](http://WWW.GLANGWNA.COM)

[SALES@GLANGWNA.COM](mailto:SALES@GLANGWNA.COM)

GLAN GWNA COUNTRY HOLIDAY PARK  
CAEATHRO | CAERNARFON | GWYNEDD | LL55 2SG  
NORTH WALES



**Titan**  
PROPERTY SERVICES LTD.

## **BUILDING & CONSTRUCTION | PROPERTY MAINTENANCE |**

At Titan Property Services, we have a team of expert construction and maintenance professionals, with a proven track record of completing projects on time and in budget.

### **Our Services**

- Residential buildingwork, commercial and industrial -
- New builds -
- Housing projects -
- Social housing -
- Building restoration -
- Heritage work -
- Renovation -
- Property maintenance -
- Project management -
- Partnering consultancy -

All projects are supervised by our project management team, which means that every client receives a personalised service.

We provide outstanding customer service and deliver high quality works.

### **Titan Property Services Ltd**

Regus House | Herons Way  
Chester Business Park | CH4 9QR

Telephone: 01244 621871

Email: [info@titanpsltd.co.uk](mailto:info@titanpsltd.co.uk)

[www.titanpsltd.co.uk](http://www.titanpsltd.co.uk)

# PLEASE SUPPORT LOCAL CHARITIES

This page is dedicated **FREE** to all registered Charities who wish to advertise.

Chester Business Club  
warmly invites you to



in support of  
**The Countess of Chester Charity**  
and **The Hospice of The Good Shepherd**

The Pavilion, Chester Racecourse

Saturday 9th June 2018

Kindly Sponsored by

**GROSVENOR**  
INSURANCE BROKERS



*Come and join us for one of the best nights in Chester's social calendar!*

- An evening of fun, fine food and frivolity all in the name of raising much needed funds for Charity
- Black Tie & Posh Frocks or, perhaps, something suave or daringly Casino or James Bond
- Drinks Reception ■ Excellent 4-Course Menu
- Cabaret & Dancing ■ Auction with fabulous prizes
- Win a fabulous piece of jewellery & other great Prizes
- A surprise or three!

Tickets? £65 - or Tables for 10 @ £600 (for 12 @ £720)  
further information or/and to place an advance order for places,  
telephone 07926 569 467 or email [info@chesterbusinessclub.co.uk](mailto:info@chesterbusinessclub.co.uk)



# COMMUNITY NEWS

Have Your Say - Tell Us & We'll Print It!  
Email us @: [info@love-chester.com](mailto:info@love-chester.com)

## Calling all Village Day Superheroes – Saturday 23rd June

Summer is fast approaching and once again, Bunbury's Jubilee playing fields will be transformed for this year's Village Day. **2018 is the year of the Bunbury Superhero.** Who's your all-time favourite Superhero? Superman, Batman, Spider-Man, Thor, Wonder

Women, Captain America? Whoever it is, we hope to see you there all dressed up (or incognito!) and ready for a wonderful day. We're expecting all sorts of heroes to be in attendance, new and old!



**A SUPER DAY OUT**

**BUNBURY VILLAGE DAY**

**23 JUNE 2018**

**PARADE 12.30<sub>PM</sub> AT THE CHURCH**

**GATES 1.00<sub>PM</sub> – JUBILEE PLAYING FIELDS**

**ATTRACTIONS • STALLS • RAFFLE • BBQ • BAR**

**ADULTS £2.50 CHILDREN FREE**

**NO DOGS, EXCEPT GUIDE DOGS    [WWW.BUNBURYVILLAGE.INFO](http://WWW.BUNBURYVILLAGE.INFO)**

No Bunbury Village Day would be complete without all the traditional attractions of this great summer event including a well-stocked bar and BBQ, funfair, parade, stalls, arena activities, WI café, puppet show, vehicle display, the list goes on!

The parade starts at 12.30pm from St Boniface Church. Gates open at 1pm at the Jubilee Playing Fields. Adults £2.50, Children Free.

For more info visit [www.bunburyvillage.info](http://www.bunburyvillage.info) or look at our Facebook page, search 'Bunbury Village Day'. If you have any questions about Village Day send us a message on Facebook.

If you're not familiar with the village, the address is Jubilee Playing Fields, Bunbury, Tarporley CW6 9QX

We look forward to seeing you on Saturday 23rd June.



Sanctuary Care

'Keeping kindness at the heart of our care'



## Upton Dene Residential and Nursing Home

*Residential* ☀️ *Residential Dementia* ☀️ *Nursing*

At our luxurious care home we work in partnership with our residents and their loved ones to ensure we build a life story together, supporting them to live happy and contented lives full of wonderful experiences and memories.

We believe in being an active part of Chester, taking part in events and activities throughout the week which promote wellbeing and independence amongst our residents and welcoming the community into our beautiful home to be part of their lives.

Visit our website for event details including our specially themed events to celebrate 20 years delivering care!

Caldecott Close, Upton, Chester CH2 1FD

Tel: 01244 569 825

# AN INTERNATIONAL CHINESE MARTIAL ARTS CHAMPIONSHIP AND CHINESE CULTURE FESTIVAL. 23RD JUNE - 24TH JUNE 2018 OVAL LEISURE CENTRE, BEBINGTON



**CELEBRITY, JET LI'S MASTER, MASTER WU BIN  
WILL BE HERE AND HE WILL BE HOLDING WORKSHOPS.  
THE TIME AND DATE WILL BE ON OUR WEBSITE**

China Spirit UK and Team Shaolin invite you to the 9th Team Shaolin Wushu Open 2018, an international Chinese Martial Arts Championship on the 23rd June 2018 and the Chinese Culture Festival on 24th June 2018 in the **Oval Leisure Centre**.

China Spirit UK is based on the Wirral, in the Northwest of England. It is a not-for-profit organization, a social enterprise, which was founded in 2012. Our organisation was set up by a real Martial Arts Master, Master Xingbo, who trained in the Shaolin Temple, to deliver a range of activities to improve health and well-being to all age groups from children to adults.

Team Shaolin was founded 9 years ago to bring together UK's Chinese Martial Artists. During the first 6 years Team Shaolin went through development stages. It has grown bigger and stronger during the years. Now we feel that we are fully developed and ready for our biggest event yet.



*This year it is going to be bigger and better because:*

- 1) Master Wu Bin - Jet Li's teacher - has already accepted our invitation to act as the main judge. He is the Chief instructor of the Beijing Wushu (Kung Fu) Team.
- 2) Mr Guochao Wang, who is also a member of the Beijing Wushu Team, has already signed up as a judge and has agreed to hold workshops.
- 3) Interest has already been expressed by teams from the UK, USA, China, Northern Ireland, Spain and Hungary too.
- 4) International and local media such as CCTV (Chinese National TV), UK - Chinese Times, Wirral Globe, Wave Fm, amongst others, have been invited to broadcast from the event.
- 5) The Mayor of Wirral and the Chinese Ambassador from Manchester have already been invited to attend the 9th Team Shaolin Wushu Open 2018

Official Sponsors:



**WWW.CHINASPIRIT.ORG.UK 075030 88886**

China Spirit UK - 150 Birkenhead Road, Wallasey CH44 7JN

Email: [info@chinaspirit.org.uk](mailto:info@chinaspirit.org.uk)

[www.facebook.com/kungfuspirit](http://www.facebook.com/kungfuspirit)





# COMMUNITY NEWS

Have Your Say - Tell Us & We'll Print It!  
Email us @: [info@love-chester.com](mailto:info@love-chester.com)



## Pause for Hope

*"To ease, through prayer, the burden of cancer on individuals, their loved ones and the community and to pray that the day will come quickly when all cancers can be prevented or cured."*

[www.pauseforhope.org.uk](http://www.pauseforhope.org.uk)

**The Pause for Hope initiative has been set up with the following objectives:**

■ **TO PRAY THAT THE DAY WILL QUICKLY COME WHEN ALL CANCERS CAN BE PREVENTED OR CURED**

- to bring together in prayer those affected by all forms of cancer, their loved ones and carers
- to remember dear ones lost to cancer
- to pray for those with responsibility for providing and allocating resources required in the investigation, treatment and care of patients with cancer
- to help those affected to understand the Christian value of suffering and that the prayers of the sick and those who look after them have great power with God
- to help those who don't have cancer but have a great fear of the disease

- to reach out to those who are at home or in hospital as patients or carers and unable to attend the Pause for Hope services.

### PRAYER IS ALL POWERFUL.

Members of all religious dominations and faiths are welcome as well as those with little or no religious faith.

### SERVICE

**Chester Cathedral Sun 3rd June 2018 - 3.30pm**  
**Speaker: Adrian Elloy JP**



## Chester Adult Phab Social Club People Have Abilities

*(a social club for people with and without disabilities)*

**Patrons:**

**Actress Cherylee Houston - Aka Izzy Armstrong, Coronation St.,**  
**Warwick Davis - Actor and TV Presenter**

**Tel: 01244 678809 / 07828 571952**

**[www.chesteradult.phab.org.uk](http://www.chesteradult.phab.org.uk)**

**Email: [lynda.hesketh@sky.com](mailto:lynda.hesketh@sky.com)**

**Chester Adult Phab is a social club for people with and without disabilities. We have 75+ members.**

**We meet the second Monday of the month in a local public house or restaurant in Chester.**



**The Queen's Award  
for Voluntary Service**

## MOVIE MAGIC

**7.30 pm, 8th, 9th and 10th June 2018**

**St Mary's Creative Space, Castle Street,  
Chester, CH1 2DW**

32

**Chester Operatic Society** perform a magical mix of songs from the movies, which will be sure to delight! Featuring classics from The Pink Panther, La La Land and The Lion King and many more. Tickets cost £14 (£7 for aged 12 and under). To book tickets, call **01244 375662** or visit <https://www.ticketsource.co.uk/chesteroperatic>





## **DOG LOVERS REQUIRED** To Act as Host Families for our Clients Dogs

Creature Comforts Home Boarding offers a complete alternative to kennels. Established in 2005 we are proud of our excellent reputation. We are fortunate to have many repeat customers who trust us and know their precious dog will be in the best hands while they are away in a loving home environment.

Our service is in high demand so we are expanding in all areas of the Wirral and Chester. If you love dogs and have the time and environment to care for them in your own home then it would be great to speak to you about joining us.

*A daily rate is paid for your service making this an ideal home based opportunity for genuine dog lovers.*

**For further information please contact Ailsa Price**

**Telephone:- 01745-550436 or 07888-693517**  
email:- [enquiries@petsittinguk.co.uk](mailto:enquiries@petsittinguk.co.uk) Web: [www.petsittinguk.co.uk](http://www.petsittinguk.co.uk)

**ARK Jewellery Designs**  
by

**Angela Ruth Kennedy**

Beautifully Handcrafted Jewellery



commissions • repairs • sales • tuition • workshops

[www.arkjewellerydesigns.co.uk](http://www.arkjewellerydesigns.co.uk) | Tel: 07917 330790 | 01244 567012

**ARK Jewellery Designs**





Keeping the roof  
over your head™

## Covering Cheshire, Merseyside, Wirral & Surrounding Areas

- House Roof Renewals
- Roof Re-Slates
- Firestone EPDM Rubber Flat Roofs
- Flat To Pitched Roof Conversions
- Fascia, Soffit, & Gutter Renewal

**Please Contact Us For A Free Quote**

 **08006344821**  **@robmcroof**

 **07960397021**  **info@rm-roofing.co.uk**

With a reliable, friendly and hard working team we can guarantee you a high standard of work with a very professional service. Our customer satisfaction rate is outstanding and we aim to keep those standards high. For photos of our work, reviews and more please visit our Facebook Page

**All Work Comes With A 10 Year Guarantee**



# tudor tonsorial

## Traditional Barber

Walk in service, no appointment required other than on Sundays by specific request. Only professional equipment, tools and products are used. If you are satisfied with your cut then please tell others, if not, then do tell us to ensure that you get what you came for, remember ...

"There is only one boss. The Customer"

✕ WASH CUT & FINISH £15 ✕ SCISSOR CUT £13 ✕ CHILD (UP TO 8) £8  
 ✕ CLIPPERS & SCISSORS £10 ✕ SENIORS (TUES & WED ONLY) £8  
 ✕ SINGLE GRADE CLIPPER £7 ✕ BEARD TRIM £3.50

✂ <strong>DISCOUNT TO READERS</strong> ✂  
 BRING IN THIS ADVERT TO CLAIM YOUR  
 £1 OFF ANY OF OUR SERVICES



f (+44) (0)7545 444435 f  
 28 Charles Street, Hoole, Chester CH2 3AY

# Indian Cookery Lessons

Learn to make your own authentic Indian meal, fresh and delicious, full of flavours

**LEARN OR GIFT SOMEONE  
 A WONDERFUL LIFE SKILL**

**Book NOW for day courses**  
**Saturday 23 June, 10am-4pm**

**Call me for more dates in  
 July, August & September**  
 Vegetarian classes also held.



Contact: **SOMA:**  
**07770752053 or 0151-334 9352**

Chester Shop  
 St. John Street,  
 Chester, CH1 1DA

Tel: 01244 348 041

# Zuger's



Now selling real dairy  
 Marshfield Farm Ice Cream

- *New Food & Drink Menu*
- *Outside Catering*
- *Private Parties*
- *Outside Courtyard*

Monday - Friday 9:00am - 5:30pm

Saturday 9:00am - 4:30pm

Sunday 10:00am - 4:00pm

Thurs & Fri Evenings Tapas/A La Carte

Last kitchen order 8:30pm



[www.zugerstearooms.co.uk](http://www.zugerstearooms.co.uk)

email: [zugerstearooms.co.uk](mailto:zugerstearooms.co.uk)



## Kia Stonic 1.0 T-GDi '2'



*I'm not sure about you – but when I first set my eyes on the Q5, I thought 'man its big' – but then as you start to look around at what else is on the road, you begin to notice that actually, it's really not that big at all, compared to its competition.*

Then when you finally get behind the wheel and start driving the Q5, it actually feels no bigger than a medium-sized saloon – which to be honest for a large SUV is amazing. In reality, it is bigger - and you wouldn't have any problem fitting in mother-in-law's head. Plus, Last week my wife went to buy a new car and the salesman asked if us if we wanted a car with side airbags. I said: "No thanks. I already have a mother-in-law."

### **Power and Efficiency:**

The Q5 I had on test was fitted with a 190PS, 2.0-litre TDI direct injection diesel engine that has 400NM of torque and can accelerate from zero-to-62 mph in

7.9 seconds and will reach a maximum top speed of around 135mph.

The Q5 is also equipped with a Stop/Start system to enhance fuel economy which all helped the Q5 return a combined figure of around 50mpg using my normal driving route – plus a bit of motorway driving. My only problem though is I don't like 'stop/start systems. Because they always seem to shut off when you don't want them too. Which is also why I'm glad my Abarth 500 doesn't have it.

I understand we need to 'save the planet' but come on – if I wanted to be irritated every time the car stopped – I would buy Peugeot.

### **On the road:**

The steering is accurate in whatever situation unfolds itself on the road and the chassis and grip levels are all good thanks to that wonderful 'Quattro' system. The Q5 is also a very engaging drive, but you need to remember that this car is not a raw seat of your pants drive - even with the S Line & S Tronic badges nailed to the tailgate.

When you do finally find the right road to get the

hammer down, the Q5 fits in perfectly with the road ahead thanks to independent suspension and a five-link axle with a front track rod, aluminium link subframe and tubular anti-roll bar at the front & rear. As I said before, the Q5 comes with that wonderful Quattro on-demand system that is designed to switch between all-wheel drive and front-wheel drive in a fraction of a second by monitoring driving dynamics, road conditions and driver behaviour. Of course, if you want to take the Q5 to a place where speed limits don't matter – then the Quattro system will be ready and on-demand to help you engage your inner demon.

### Design & Technology

Equipment highlights include; Dual-circuit brake system, Antilock Braking System, Electronic Brake Force Distribution (EBD) Electronic Differential Lock (EDL) Traction Control (ASR) Electronic Stabilisation Control (ESC).

Then we move onto the inside. For a start off, there is now more headroom, legroom and cabin space on the inside compared to the previous model. Plus, Audi has used premium materials on the inside of the Q5 and nothing looks cheaply made. Then there are the controls that are set out to be as ergonomic as possible and have that quality feel to them throughout the interior.

Some of the standard equipment includes; 19" x 8.0J '5-twin-spoke star' design, diamond cut finish alloy wheels, S line exterior body styling, LED headlights

with Q signature design, LED rear lights and dynamic indicators, Front Sport seats with 'S' embossed logo in leather/Alcantara, Inlays in Matt brushed aluminium, high multi-function 3-spoke leather steering wheel with grips in perforated leather. Gear-lever knob in black perforated leather, Illuminated door sill trims with 'S' logo, privacy glass, contrast stitching on seats, steering wheel and gear lever gaiter.

Plus, 4-way electric lumbar support, LED Interior Lighting Pack, MMI Navigation (SD card-based), Audi Connect Infotainment ServicesPlus (3-month trial – then 36-month subscription is available to purchase as part of the Technology Pack) I could go on, but I have run out of space and my editor will be pulling his hair out if I don't stop writing.

### To sum up:

The Q5 is a brilliant car – but what makes it stand out from the rest is its ability to look good and drive even better. I would not rule out taking a look at the Audi Q5 in the future because it has some great features along with a good chassis and a firm sense of reliability on its side.

Price from: **£39,405**





**GFUKAUTODESIGN**  
Automotive Tinting & Customs

# WE SUPPLY AND FIT GHOST IMMOBILISERS

**PROTECT YOUR VEHICLE WITH A  
GHOST IMMOBILISER! EVEN IF THIEVES  
HAVE YOUR KEYS THEY  
CANNOT START YOUR VEHICLE!**



**QUOTE  
LOVE  
CHESTER**

**PROTECT YOUR  
CAR FOR ONLY £399**

**FOR MORE INFORMATION PLEASE CALL US TODAY ON:**

**0151 334 7401**

# Personalised Care

At your local Barchester care homes



At Barchester we understand finding the right care home can be a daunting decision, that's why our friendly teams are on hand to offer advice and guidance at a time to suit you.

Our homes offer a range of care services whilst supporting independence and maintaining individual interests. With varied activities programmes and freshly prepared home-cooked meals, we pride ourselves on making everyone feel at home.

Join us at Beeston View & Oak Grange's Open Days: Saturday 9th June 12-4pm

For urgent care or help and advice contact our friendly teams who are always here when you need them.

For more information visit [www.barchester.com](http://www.barchester.com)



**BARCHESTER**

*Celebrating 25 years*

**Beeston View**

Tarporley, CW6 0EG

Tel: 01829 289 654

**Iddenshall Hall**

Tarporley, CW6 0EG

Tel: 01829 289 669

**Oak Grange**

Mollington, CH1 6NP

Tel: 01244 434 385

Nursing Care • Residential Care • Dementia Care • Respite Breaks

# Create your own NATURE GARDEN

Nectar-rich flowers and creature features will make your garden a magnet for wildlife

Once upon a time the 'wildlife garden' was something that got tucked away at the bottom of the garden. The fear was that it would look a bit scruffy and spoil the general outlook – and besides, the rest of the garden was needed for other activities such as growing vegetables and displaying prized dahlias.

The good news is, times have moved on and today gardeners have realised that wildlife-friendly features can be incorporated everywhere. With just a little bit of thought, your garden can be good for you and for the planet. Some of the best gardens for nature are some of the most beautiful. So why not create your own nature trail?



Small garden changes can bring stunning visitors.

## 1 GREEN UP YOUR PATIO

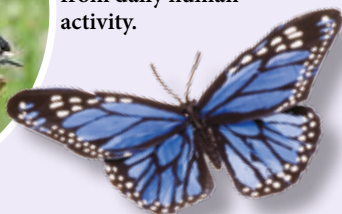


Hard landscaping seldom offers much wildlife interest, bar a bit of lichen on the paving slabs or algae on the decking! To give your nature trail a better start, find a way to incorporate a container of pollinator-friendly wildflowers, or perhaps a bee brick, bug hotel or stook of short garden canes or hollow stems to encourage lacewings and ladybirds to hibernate.

That climber growing up the house-wall is the ideal place for robins' nest each year, and perhaps adding a nestbox will encourage sparrows to move in?



**HABITATS** Bird boxes, bug hotels and hoggy homes should be positioned in a safe, sheltered place away from daily human activity.



## 2 PLANT NECTAR-RICH BLOOMS

Flowerbeds are usually full of spring bulbs and summer flowers. In nature, this is like an open ungrazed habitat, bathed in sunlight, where flowers grow tall.

The obvious visitors are bees and hoverflies; if we're lucky, we'll see some butterflies, too. Stop, stoop and look hard – you'll see that all that foliage provides cover and homes for many other insects, spiders and other creepy crawlies too.

Butterflies and bees will really be boosted if you choose only those plants that are stuffed with nectar and pollen. Too many cultivated plants have lost all their goodness, so avoid double flowers (whose stamens have been bred into extrapetals) and your borders will soon be buzzing.

## 3 BUILD A POND

A garden pond might not have the wild swans and geese of the great wetlands and marshes but, wherever there is water, life will come. For many of us the highlight will be frogs and newts. If you're really lucky you'll attract toads. But even watching the skimming of pondskaters across the surface or the antics under the surface of water-boatmen is entertainment enough.

Even an ornamental pond will still attract colourful dragonflies and damselflies, and birdswill visit to drink and bathe.

The larger your pond, the more wildlife it's likely to support. Ponds that have shallow margins and plenty of submerged native pondweed and emergent plants will be much better than steep-sided, plant-free ponds. The water weed and some pond snails will help keep the water clear.

## 4 CREATE LEAFY COVER

Climbing plants such as honeysuckle, clematis and evergreen ivy are ideal for turning bare fences into wildlife-rich habitat. Not only do they offer plenty of shelter for nesting birds and insects, but the flowers will offer nectar and pollen, and berries in late summer.



Fencing  
Gates  
Sheds & Log Stores  
Decking  
Paths & Patios

# Justfencing

C H E S H I R E

Installers of quality timber fencing

**FREE NO OBLIGATION QUOTES**

**0151 336 7598 / 01244 470 120 / 07957 349 244**

**www.justfencingcheshire.co.uk**



30 Years Experience  
in Professional  
Gardening Et  
Landscaping



**Quality Regular Maintenance**  
or one off garden tidy ups - no problem!

*It's what we do that matters!*

All garden work: clearing, turfing, moss removal, lawn mowing, scarifying, planting, small trees, hedges, jet cleaning, fencing, rockeries, water features and pruning.

*We specialise in all garden work  
carried out to the highest level.*

**Tel: 0151 334 6227 or  
Mobile: 07425 159 788**  
Email: leehanleylandscapes@hotmail.co.uk

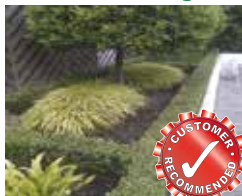
- HOME GARDEN MAINTENANCE
- PUBLIC HOUSES/RESTAURANTS
- APARTMENT BLOCK GARDENS
- CAR SHOWROOMS
- NURSING HOMES
- CHURCHES
- HOTELS

... and much more!



There are plenty of gardeners to choose from -  
so why choose us?

**Beautiful gardens start with us...**



## Frodsham Gates and Fencing Direct

Manufacturers of quality white  
primed picket fencing  
Custom made fencing and gates  
Sheds and child friendly fencing  
Driveway gates  
Decking & bespoke fitting service  
**FREE NO OBLIGATION QUOTATION**



Unit 15, Brook Works, 38 Main Street, Frodsham WA6 7AX

**Tel: 01928 890030**  
**M: 07725 235 760**

www.frodshamgates.co.uk  
Email: sales@frodshamgates.co.uk

Inspiring beautiful  
landscapes

# SHOWROOM NOW OPEN



## Local Business Corfe Stone Joins UK Leader CED Stone Group

Hooton based firm Corfe Stone has been acquired by CED Stone Group, a leading family-run business with a prominent name in the UK hard landscaping industry. With five other nationwide depots, CED Stone welcomed Corfe Stone to their group as part of their exciting growth initiative.

Corfe Stone has supplied hard landscaping products such as stone paving, gravels, sands and walling to both

commercial and domestic customers in the North West for over 30 years. With an extended showroom displaying their full range of products for customers to view and an 8800 square foot warehouse, Corfe Stone has always held a large presence in the local area. Helping to support other businesses in the area, they regularly refer customers to their list of recommended local contractors to carry out their installation work.

The two companies certainly have a lot of common!

CED Stone Group provides one of the most extensive range of natural stone and hard landscaping products on the market. Fulfilling the needs of an ever-changing industry, they work with a wide range

of customers from architects and contractors to City Councils and RHS Garden Designers. Corfe Stone's existing staff of ten have remained at the heart of the business, bringing with them highly valuable experience, knowledge and customer relationships.

Corfe Stone has continued to trade under its own well-known and respected name, but following on from CED Stone Group's extensive company-wide re-branding, it will be transforming to [CED Stone Landscape North West – Corfe Depot](#).

For further information about CED Stone Group, their extensive product range and their new branding, visit [www.cedstone.co.uk](http://www.cedstone.co.uk)



LANDSCAPE

# Corfe Depot



---

**“Like CED, Corfe Stone is a family-owned company, which has been trading for over forty years. Its products, traditions and customer service ethos are very similar to ours. The business is a great fit for us and we look forward to serving Corfe’s loyal customer base” -**  
Managing Director  
Giles Heap

---



**We hope you can join us for our Open Day in May for all our latest offers!**

**CED Stone Landscape  
North West - Corfe Depot**  
Hooton Works  
Hooton Road  
Wirral  
CH66 7NB

e. [north\\_west\\_depot@cedstone.co.uk](mailto:north_west_depot@cedstone.co.uk)  
t. 0151 327 5555  
w. [www.corfestone.com](http://www.corfestone.com)

# LOW COST PRINTING

FOR YOUR BUSINESS OR PERSONAL USE

- Flyers and leaflets
- Letterheads & Cards
- Corporate Brochures
- Posters & Magazines
- Corporate Identity
- Vehicle Graphics
- Shop Signage
- NCR Pads
- Business Start-up Packs *and much more...*

**CALL US TODAY & START SAVING ££££'s**

Professional design service offered free on every order.



Email: [info@cre8tivegraphics.co.uk](mailto:info@cre8tivegraphics.co.uk)

Telephone: 01244 555244

## DO YOU REQUIRE HELP IN YOUR GARDENS?

Garden services include:

- All Groundwork Undertaken
- Grass Cutting
- Pruning
- Hedge Cutting
- Turf Laying
- Border Work
- Grass Scarifying
- Garden Maintenance

**CALL TODAY FOR A FREE QUOTATION!**  
Excellent rates



Grass Scarifying

S.G. Darlington Garden Services

Call: 01829 752042  
07879 33 94 74

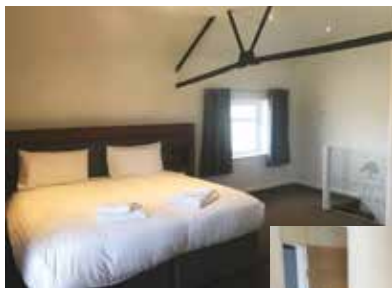


## OAKWOOD FARM MEWS

You can look forward to a warm welcome at Oakwood Farm Mews. We provide modern en-suite accommodation on the outskirts of Chester/Wirral and are conveniently located for Chester Races and the M56 link to Manchester and Liverpool. Stay with us and enjoy Full en-suite accommodation with 9 Spacious comfortable rooms. Free Wireless Internet and excellent proximity to Chester and the M56. Our rooms are priced from just £50 per night and we are happy to welcome both tourists and business travellers for any length of stay. There is also a dog friendly room at an additional £10 per night.

Oakwood Farm Mews  
Oakwood Farm, Parkgate Road, Chester CH1 6EY  
Telephone: 01244 880828

*Style & elegance in the heart of the countryside*



E: [info@oakwoodfarmmews.co.uk](mailto:info@oakwoodfarmmews.co.uk)

W: [www.oakwood-farm-mews.co.uk](http://www.oakwood-farm-mews.co.uk)



# COMMUNITY NEWS

Have Your Say - Tell Us & We'll Print It!  
Email us @: [info@love-chester.com](mailto:info@love-chester.com)

## CHESTER TOWN HALL

**will be the venue for a Fine Art Extravaganza in June.**

Local artist and lecturer Sue Farrington is excited about the two-day event which will present an opportunity for the public to buy pieces of original work direct from artists.

"I teach oil painting in the North West of England," said Sue. "Over many years I have become increasingly aware of the need for artists to be able to show and sell their work directly to the public. So many of these fabulous artists have fabulous original paintings that rarely get seen.

"Art is for everyone - by joining local Art Groups, Art Classes and Art Societies or visiting galleries and exhibitions. It opens up a whole new world whatever your age.

"I have enlisted 34 other eager professional and amateur artists to display and sell their original work.

"The Fine Art Extravaganza is a two-day event which will take place on June 2 and 3, between 10.30am and 6pm on both days."

Sue specialises in oil painting and has lived, taught and exhibited in Australia, New Zealand, Borneo, Malaysia and the Philippines. It was in Borneo where Sue attended Art College.

She studied for her teaching qualification at Darwin University in the company of jackaroos, jillaroos, outback prison officers and nurses while her late husband was working on the construction of the Alice Springs to Darwin Railway Bridges.

In complete contrast her previous occupation was Piping Process Works Administrator on the installation of a new Nuclear Reactor vessel in Engadine Sydney.

Returning to the UK in 2005, Sue worked at Burton Manor, and West Cheshire College, in Handbridge, Chester.

Sue currently teaches in Chester, at Caldley Valley Church Centre, Okell's Garden Centre, Tarporley, and at the Altrincham Art Society, Manchester, and is a member of Chester's Grosvenor Art Society who hold regular exhibitions, demonstrations and workshops.



*IN THE FRAME -*

*Sue Farrington with one of her oil paintings*

She also demonstrates and runs successful oil painting workshops throughout the North West and North Wales, exhibiting and selling with Silver Star Gallery.

During the English winter Sue returns to paint and exhibit in Perth, Western Australia, where she taught, exhibited and sold at the Atwell and Heathcote Galleries.

Sue also organises painting holidays to France, in conjunction with Hoteliers Rachael et Alain Savouré from Hôtel les Grands Chênes St Fargeau Burgundy.

The Plein Air Painting Programme is designed for small groups of artists to enjoy painting everything the amazing area has to offer. Including Chateau de Saint-Fargeau, Guédelon Castle (featured on BBC TV on January 21, 2015).



# Hoofing it



We encounter many animal species during our Club forays into the great and hilly outdoors. Sheep galore, obviously, though most keep their distance. However, on a smallholding near Loggerheads there resides a very sociable flock of Jacobs sheep. One of these fields has a marvellous view of the surrounding Clwydian hills, so we sometimes use it as a lunch stop. The sheep are adept at spotting hungry hikers hauling lunch out of rucksacks and soon hoof it across to make friends. Horses occasionally check us out too, though we don't encourage them. On a recent Club walk, the public footpath took us along the edge of a meadow in which three ponies grazed happily. The field gate was tied to its post with an ancient piece of frayed and tangled rope, and it took several minutes to undo it. Our equine friends spotted us struggling to get through, thought it looked moderately amusing and trotted over for a closer look. Concerned that they might try and escape, we clanged the gate quickly shut behind us and retied it securely. The horses, it turned out, were more interested in the contents of our rucksacks than the wide world beyond their lush green home. Following us closely the full length of the field, their noses nudged our backs till we climbed the stone stile into the next field. Turning back briefly, I saw three horse faces staring wistfully at us from over the hedge.

Engaging with animals is unavoidable when using public footpaths that cross farmland. Entering a field with cows and bulls in it can be intimidating, but applying common sense is always the best course of action to ensure the safety of both walkers and livestock. Young playful bullocks sometimes gang up and try to bully (no pun intended!) hikers into abandoning a walk through their pasture. In our experience, boldly but quietly walking round them usually does the trick. One field we were passing through was occupied by a bull and his harem, and we were concerned that the bull might be overly protective of his women and hostile to our presence. In fact, it was the cows that followed us along the footpath, the bull staying put in the distance, barely glancing our way! Farm birds don't take much notice of hikers either, apart from the occasional goose bellowing as we pass by. However, who can fail to be enthralled at the sight of a family of ducks with their tiny fluffy youngsters swimming on a farm pond or a mere? This is one of the delights of a country walk that's guaranteed to trigger oohs and aahs from all who spot them.

Some less commonly seen animals are turning up on farms these days, and on the odd occasion, a long necked creature will be staring at us from over a hedge. Not knowing too much about ostriches, I haul in my natural desire to go over and say hello, and steer well clear. My knowledge of llamas and alpacas is sparse, too, though I am aware that they can hiss and spit if they feel threatened, so it's always best to stroll nonchalantly past them. During a recent alpaca

experience, some of these odd-looking woolly beasts lifted their heads from the lush grass as we walked by. One of them broke wind loudly, before lowering his bored gaze and returning his attention to the far more fascinating topic of lunch. Manners may maketh man, but other creatures pay little heed to the niceties created by the human race.

Some farm residents are more gracious than others, and some are best avoided at all cost. A breed far apart from the friendly hounds that accompany other hikers on the hills is the farm dog. These can be fearsome brutes that greet approaching walkers with a deafening cacophony of barking. Thankfully, they rarely come too close, preferring to terrorize from a distance as we scurry past! There's an old saying that barking dogs seldom bite, but we don't plan on getting close enough to find out whether this is true or simply a load of old bull.

Check out what we're up to during the Summer by visiting our website:

[www.chesterwalkingclub.com](http://www.chesterwalkingclub.com)

Maria Owen, Press Officer, Chester Rambling and Hill Walking Club

## CHESTER RAMBLING & HILL WALKING CLUB

We are a Chester-based walking club, offering up to 3 grades of walks on Sundays, and alternate Wednesdays, and a programme of short summer rambles on Tuesday evenings. The summer season also sees a flurry of camping activity, when we pack up our tents, hook up the caravans, book B & B's and cottages, and head off to destinations slightly further afield for a few days.

Led by experienced leaders, our Sunday and Wednesday walks last approx 6 hours, so bring picnic, flask and water. These hikes cover Snowdonia and North Wales, Cheshire, Shropshire, Lancashire and Derbyshire. Sorry - no dogs or under 18s allowed on our walks.

The club runs mid-week social evenings during the winter, including supper evenings, quiz nights and the ever popular Christmas party!

Why not come and join us on a trial basis without paying the fee?

Find out more by emailing [chesramclub@yahoo.com](mailto:chesramclub@yahoo.com) or head over to our website for more details: [www.chesterwalkingclub.com](http://www.chesterwalkingclub.com)

# DIARY DATES

# JUNE



## Friday 1st & throughout June Cathedral at height tour

**Chester Cathedral, St Werburgh Street Tel: 01244 324756**  
[www.chestercathedral.com](http://www.chestercathedral.com)

Experience our cathedral like never before. This multi-award winning 'Tower Tour' will take you behind the scenes, providing an unparalleled level of public access.

Our tour with a twist will allow you to immerse yourself in our unique blend of medieval and modern history. See one city, two countries and five counties from the top of the cathedral tower. Climb through 900 years of history and discover our hidden spaces.

**1 hour tour - £8.00 Adults**  
**£6.00 children**  
**30 min. tour - £6.00**



## Saturday 9 June 2018 Gary Barlow UK Tour 2018

**Delamere Forest**  
**Delamere Forest Park**  
**Northwich**  
**Cheshire. CW8 2JD**

Gary Barlow will end his 2018 solo tour with an intimate gig in some very familiar surroundings. Delamere Forest has been revealed as one of the venues the Frodsham born icon will play during a number of up-close-and-personal shows when he embarks on a 34 date solo tour of the UK.

**Tickets available at [ticketmaster.co.uk](http://ticketmaster.co.uk)**



## Saturday 9th June 2018 DUNLOP MSA BRITISH TOURING CAR CHAMPIONSHIP OULTON PARK

**Little Budworth, Tarporley CW6 9BW**  
**Phone: 01829 760301**

The BTCC is back for its 60th anniversary season, with some of the closest and most exciting racing you'll see all year!

Reigning champion Ashley Sutton heads a packed field of super saloons, with opposition coming from former champions Colin Turkington, Matt Neal, Jason Plato and Andrew Jordan, plus a host of race-winning drivers. Oulton Park is a favourite with both fans and drivers, and is traditionally the best-attended round of the season.



## Sunday 10th June 2018 Chester Dragon Boat Racing

Excitement is building as teams prepare for this year's Chester Dragon Boat Festival in June. The 2018 Dragon Boat Festival will be held on the River Dee at Sandy Lane.  
[chesterdragonboatafestival.co.uk](http://chesterdragonboatafestival.co.uk)



## Sunday 10th June 2018 Congleton Food & Drink Festival 2018

**Congleton Town Centre (CW12 1BN)**

Now in its tenth year, Congleton Food and Drink Festival is organised by a small team of experienced volunteers on an entirely not for profit basis.

## 13th - 17th June 2018 Bolesworth International Show

**Tattenhall, Chester CH3 9HQ**  
**Phone: 01829 782210**

If you're looking for a fun family day out in Cheshire - The Bolesworth International promises to be one of the most exciting events of the summer.

**EMAIL: [INFO@BOLESWORTH.COM](mailto:INFO@BOLESWORTH.COM)**



## 20th & 21st June 2018 Royal Cheshire County Show

**County Showground, Tabley, Knutsford.**

The largest County Show in the North West!



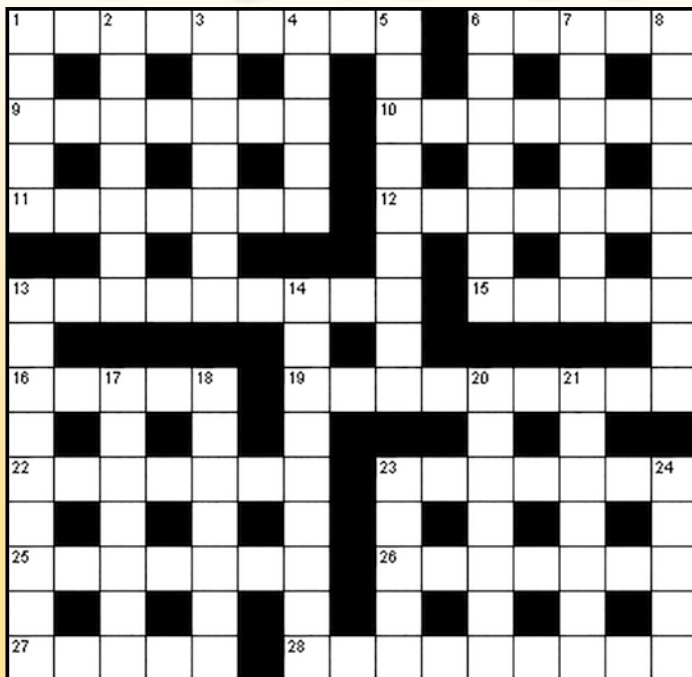
[www.cheshirecountyshow.org.uk](http://www.cheshirecountyshow.org.uk)

## Wednesday 27th June 2018 Sandbach Concert Series

**St Mary's Church Hall, High Street, Sandbach, Cheshire CW11 1HD**

In existence for over 25 years, Tubalát has become one of the UK's leading low-brass ensembles. The group's dynamic performances, coupled with unrivalled virtuosity and variety always manages to astound listeners. Doors open at 6.30pm. Book your pre-concert dinner at La Casa Mia 01270 761077 7pm finishes 9pm Ticket prices - £9.50, Concessions £8.00, Family tickets £20 (2 adults & 2 children) & School Children £3

# PUZZLE CORNER



## Down

1. Sew together loosely (5)
2. Catch sight of (7)
3. Leave undone (7)
4. List components (5)
5. Insurgent (9)
6. Maybe (7)
7. Add sugar (7)
8. Substitute (9)
13. Contagion (9)
14. Obese (9)
17. Germane (7)
18. Doubtful (7)
20. A pet rodent (7)
21. Aspiring to impracticable perfection (7)
23. An award (5)
24. Urgency (5)

## Across

- |                          |                       |                         |
|--------------------------|-----------------------|-------------------------|
| 1. Start (9)             | 13. The same (9)      | 25. Make better (7)     |
| 6. Noodles (5)           | 15. Ringworm bush (5) | 26. Particulars (7)     |
| 9. A small signboard (7) | 16. Sham (5)          | 27. Homes for birds (5) |
| 10. Heartfelt (7)        | 19. Inn (9)           | 28. Permissiveness (9)  |
| 11. Verbalize (7)        | 22. Reindeer (7)      |                         |
| 12. Atomic pile (7)      | 23. Gigantic (7)      |                         |

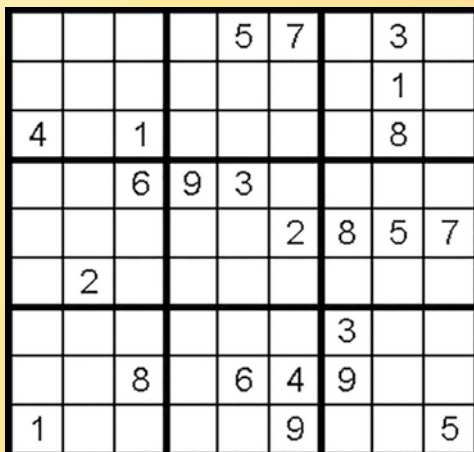
## Sudoku Puzzle

How to play: The numbers 1 through 9 will appear once only in each row, column, and 3x3 zone. There are 9 such zones in each sudoku grid.

There is only one correct solution to each sudoku. Good luck!

Difficulty level: **Medium.**

Solutions can be found on our website:  
[www.love-chester.com](http://www.love-chester.com)







# Deluxe Window Cleaning Wirral



Before



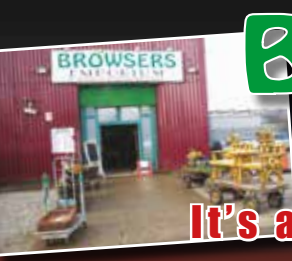
After

- ✓ Conservatory cleaning
- ✓ Gutter cleaning
- ✓ Soffit and fascia cleaning

## Call Steve on 07504 789668

### [www.deluxewindowcleaningwirral.co.uk](http://www.deluxewindowcleaningwirral.co.uk)

email: [info@dwcwirral.co.uk](mailto:info@dwcwirral.co.uk)



# BROWSERS EMPORIUM

[www.browsersemporium.com](http://www.browsersemporium.com)

## It's an Aladdins Cave of Treasures

You name it and we've probably got it!



All types of new & second-hand furniture & fittings to browse under one roof!

**From bulbs to lights, door handles to doors & stools to tables!**



Hooton Works, Hooton, Wirral (Junction 5 - M53) off A41 to Chester Next to Corfe's)

# Tel: 0151 328 1467

Open: Mon-Sat from 10.00am

Sunday 10:30am - 3:30pm



All credit cards accepted

# Advertise with us and get great deals on your businesses printing needs! All professionally designed

Business Cards 250 on 350gsm card **£22**

2500 A5 Flyers on 150gsm silk **£58**

Letterheads 100 copies on 120gsm uncoated **£36**

A6 Invites with envelopes 50 on 350 gsm silk **£30**

*Don't see what you are looking for the just ask!*



## Ask about our great new DEALS to advertise in 2018! Affordable advertising for YOUR business!

Call us today: **0151 513 1279**

CHEAPER ADVERTISING RATES THAN MOST NEWSPAPERS & OTHER LOCAL MAGAZINES!

**FREE DESIGN OF YOUR ADVERT! FREE PHOTOGRAPHY!**

**Love Chester** the magazine of choice for all **local** businesses

Love Chester Magazine is delivered through:- Busy local high streets, our advertisers, local businesses, golf clubs, business centres, supermarkets, staff rooms, hotels, libraries, social clubs, garden centres, butchers, cafes, restaurants, bars, hairdressers, beauty salons, DIY stores, solicitors, opticians, take aways, churches, doctors, dentists, hospitals, council offices and office buildings with lots of staff!

We deliver to the following areas:- Chester City Centre, Handbridge, Boughton, Huntington, Christleton, Littleton, Vicars Cross, Hoole, Bache, Upton, Newton, Moston, Mollington, Blacon, Saughall, Saltney, Guilden Sutton, Mickle Trafford, Rowton, Waverton, Chester business park and Sealand Industrial Estate.

**www.love-chester.com**  

**ONCE YOU HAVE READ ME PLEASE PASS ME ON TO SOMEONE ELSE!**

Call: **01244 555244** or email: **info@love-chester.com**



With over 70 years of jewellery manufacturing experience, we only use our own skilled craftsmen to perfect each beautiful piece. Our diamonds are sourced from the most trusted houses in Antwerp.



**OPENING HOURS**  
 Monday - Saturday  
 09:00 - 17:00  
 Sunday  
 11:00 - 16:00



bespoke jewellery designed and manufactured in our Chester store



**carlchristopher**

*LUCYQ*  
 BY LUCY QUARTERMAN

*ChloBo*  
 Irresistibly Collectable Jewellery

*Thomas Sabo*

*LUCYQ*  
 BY LUCY QUARTERMAN

*ChloBo*  
 Irresistibly Collectable Jewellery

*Thomas Sabo*

38 Northgate Street  
 Chester CH1 2HA

52 High Street  
 Congleton CW12 1BA

47 High Street  
 W. Glossop SK13 8AZ

[www.carlchristopher.com](http://www.carlchristopher.com) • Tel: 01244 329923

[carlchristopher@outlook.com](mailto:carlchristopher@outlook.com)



/carlchristopherCH1



carlchristopherjewellers



@CCarlchristopherCH1

# Your chance to create a new smile.

## A new approach to dentures.

Do your dentures cause:

- Frequent embarrassment?
- Difficulty speaking?
- Food restrictions?
- Sore spots and pain?

Our experts can help with our discreet personal denture services.

What we do:

- The very best cosmetic dentures
- Implant retained dentures
- New dentures in 24hrs
- Relines to old dentures
- Additions to existing dentures

We have over 25 years experience in producing beautiful natural looking smiles.

 Smiles & More  
Denture clinics

Smiles By Design, 9 St John Street, Chester, CH1 1DA

Tel: 01244 566118

[www.smilesandmore.co.uk](http://www.smilesandmore.co.uk)

"My lovely new teeth look so natural. Everyone says they can't tell I wear dentures"

Call now for a **FREE** consultation

