

# LOVE CHESTER

MAGAZINE



NOVEMBER 2021  
Issue 55

Monthly Business & Community magazine delivered in & around Chester

I'm  
**FREE**  
Pick Me Up!



**love-chester.com**



ONCE YOU HAVE READ ME PLEASE PASS ME ON TO SOMEONE ELSE!

Call: **01244 555 244** or email: **info@love-chester.com**



**COTSWOLD**  
outdoor

# THE OUTDOORS IS WHAT WE MAKE IT.

We'll help you find kit made for adventure, not for landfill, so all you have to worry about is where you're heading next. Make the right choice with the experts and help reduce your impact and protect the places you love.

**Visit us in-store today**

82-84 Foregate St | Chester | CH1 1HB | 01244 400 204

[cotswoldoutdoor.com](http://cotswoldoutdoor.com)



Scan here to find us



**Tel: 0151 336 6925**



## BUILDING

We understand the importance of achieving a customers vision and needs.

Every project is completed to the highest quality and customer satisfaction is imperative.

We aim to give customers confidence that we will keep disruption to a minimum and always work within a safe, clean and tidy environment.

## GLAZING

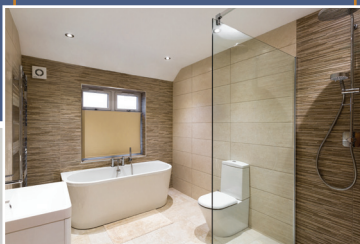
We are professional installers of windows, doors, bi folds and frameless glass extensions.

Elliott Build & Glaze Ltd is a Fensa registered company and we are able to provide a 10 year insurance backed guarantee.

## PLANNING

From first contact with the customer to completion of the project, Elliott Build & Glaze Ltd can provide all services required to meet your needs, from full architectural design to the final fitting of the flooring. We aim make this experience as enjoyable and stress free as possible.

*A family run business which has been built on recommendation*



## CUSTOMER RECOMMENDATIONS

### Farrar - Greasby

"Both Alison and I would like you to pass on our thanks and best wishes to all of those involved at Elliott Build & Glaze Ltd in this project, as they have been very attentive and professional, as well as personable, throughout the project."

### Forshaw/Murray - Bebington

We are very happy with all the work and the high standard that was attained.

### O'Mally - Meols

"Scott and the team certainly gave us best in class service whilst they worked on our extension, kitchen and bathrooms. They kept us informed all the way and worked around our diaries to deliver the programme on time. We highly recommend them to anyone."

**[www.elliottbuildandglazeld.co.uk](http://www.elliottbuildandglazeld.co.uk)**



Email: [elliottbuildandglazeld@live.com](mailto:elliottbuildandglazeld@live.com)

Elliott Build & Glaze Ltd is a trading name of S R Elliott Build & Glaze Ltd.



# WHAT'S IN THIS MONTHS LOVE CHESTER MAGAZINE



8

**Joshua Tree  
News**



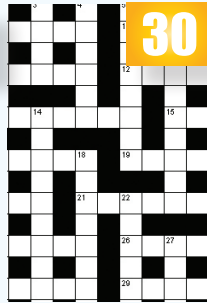
16

**What's  
Happening  
At Our Zoo**



22

**This Month  
In History**



30

**Puzzle  
Corner**



32

**Chester  
walking  
club**

## Love Chester The Local Magazine for Businesses in and around Cheshire.

Charity page - Joshua Tree news	8
Do You Know?	10
What's Happening At Our Zoo?	16-17
Do you have land to sell?	20
This month in history	22-23
Community page	24
Charity page -	
History of the Poppy Appeal	26-27
Chester Zoo Lantern Festival	28-29
Puzzle Corner	30
Chester Rambling & Hill Walking Club	32-33



*Dear Friends,  
Autumn is here,  
warmer than usual,  
which is nice.*

*Halloween and  
bonfire night are just  
about here as I write,*

*please think about the animals and check  
for hedgehogs if you are having a bonfire!*

*Remember to let me have any information  
about community events coming up!*

*Our advertisers are quality, local and  
reliable tradespeople offering great  
services at affordable prices.*

*We have some great offers for new  
advertisers, all our contact details are on  
the front of the magazine.*

*You may want to advertise in our Love  
Wirral or Love Wrexham magazines!*

*Keep up to date with us on Facebook and  
our Facebook Group, Twitter or visit us at:  
[www.love-chester.com](http://www.love-chester.com)*

**Best Wishes  
Maxine & Mike**

**Cover Photo:  
Cenotaph at Chester Cathedral**

Circulation of this FREE magazine is distributed to Chester and its surrounding villages.  
Love Chester Magazine Limited Registered Office: 1st Floor 12 Church Road, Gatley, Cheadle, Cheshire, SK8 4NQ  
Company Number: 10588054

"Love Chester" is produced by an independent organisation; which is not connected to any other organisation, publication or groups.  
All material is copyrighted and no part of this publication may be reproduced or transmitted without the written permission of the copyright holder.  
Please note that we do not endorse any products or services of any advertisers. All advertisements and their content are accepted in good faith. Responsibility for copyright and the accuracy of the information provided lies with the advertiser.

# cheshire joinery *services ltd*

Bespoke hardwood windows and doors



**EARLY BIRD  
AUTUMN OFFER!**

Kiln dried hardwood  
fire briquettes  
10KG bag £5

10 bags £30 - 20 bags £40

Hardwood offcuts also  
available

Join us for a workshop tour and have a bag of briquettes on us!

Unit 1b, Barrowmore Estate, Gt Barrow, CH3 7JA  
[www.cheshirejoineryservices.com](http://www.cheshirejoineryservices.com)  
[info@cheshirejoineryservices.com](mailto:info@cheshirejoineryservices.com)  
**Tel: 01829 741751**

# Total Property Maintenance

**General Building Work  
Plastering  
Painting & Decorating Specialist  
Total Property Services**



- FREE Estimates •
- No Job Too Small •
- Time Served Tradespeople •
- Local Authority Approved •

Telephone 07884 758415  

*Katherine Jane*

PROFESSIONAL PERSONAL ASSISTANT

**Don't Get Locked Down By Your Business  
Let Us Free Your Time Today!**

Get in touch with me and see how my team can help  
you and your business grow!



- Social Media Management
- Specialist Research and Analytics
- Business Proposal Development
- Website Design
- Travel Research & Booking
- Business Administrative Support

**www.katherinejppa.co.uk - kat@katherinejppa.co.uk  
07966 778990**

# An affordable stunning makeover that simply... Transforms Your Kitchen

**SALE ON NOW - GET IN TOUCH TODAY**



A family-run business with  
over 25 years of experience  
No need to empty cupboards  
Most kitchens completed in  
as little as 1 day  
**NO MESS, NO FUSS**  
All doors made to measure  
Choose from vinyl, acrylic,  
solid wood or painted doors

## ASK ABOUT OUR QUARTZ OVERLAY

Why replace your worktop when this unique quartz  
overlay simply fits over your existing surface ...

- Hygienic
- Easy to care for
- Scratch resistant
- Easily installed
- Cheaper than granite

Endorsed by  
Which? Trusted Trader



Call for a FREE quotation on  
**01244-794102**

[www.transformyourkitchen.net](http://www.transformyourkitchen.net)  
Transform Your Kitchen Ltd



## THE JOSHUA TREE

SUPPORTING FAMILIES AFFECTED  
BY CHILDHOOD CANCERS

### **Sue Devaney joins Children's Cancer Charity, The Joshua Tree, as a new Patron**

British actress Sue Devaney, better known for her appearances in *Coronation Street*, *Dinner ladies*, *Shameless* and *Jonny Briggs* to name but a few, has joined The Joshua Tree as Patron to the charity.

Sue brings not only personal experience of childhood cancer within her own family, but also a huge passion for all that The Joshua Tree stand for, and in supporting the charity will help raise awareness of the support offered to families affected by childhood cancers.

"I am absolutely chuffed to support The Joshua Team as Patron and not only raise awareness of the incredible work they do supporting families affected by a childhood cancer diagnosis but help make a difference where I can.

I grew up around hospitals as a child as my brother had Leukaemia. My sister and I would have loved a safe, happy place to spend time in, like the amazing Joshua Tree. I understand the trauma experienced by families and how the support of the charity can really help them during such a distressing time. It is my honour to be patron of such a special charity.", commented Sue.

"We are delighted to have a Sue join us as a new Patron at such an exciting time for the charity. Not only will Sue bring a huge amount of energy and charisma, but also an understanding of the impact of a childhood cancer diagnosis." Said Pippa Watson-Peck, Fundraising and Communications Manager.



*The Charity's interest in clinical research continues with the development of links with surrounding Universities to better understand the affects that childhood cancer has on a family, emotionally, cognitively, and physically.*

*The focus remains at the heart of the charity, to continuing to offer support to the whole family, from diagnosis, through treatment and beyond, as specifically recognising that post-treatment can be a challenging time, when families are having to adapt to their 'new normal' and the charity offers support to help bridge the gap that's left when the safety net of treatment ends.*

*The Family Support Team are dedicated to working closely with families to the charity in recognising that every family's cancer journey is unique, tailoring the services to suit the family's specific needs, by means of emotional well-being and practical support in and around the home, medical and educational environments where required.*

*To date, over 245 families have been referred to The Charity.*

# Retirement living in the heart of Chester

People looking to stay active in later life can now reserve their place at Belong's latest state-of-the-art village due to open early 2022.



## Complimentary Tech Package

Stay connected when you move in to your Belong apartment! Enjoy a free Android tablet and free broadband and telephone calls on us. \*

*\* Includes calls to landlines and mobiles, based on fair usage policy, but excludes international and premium numbers*



*Apartments are unfurnished and exclude white goods.*



Choose from 23 newly built one or two bedroom apartments



Option to purchase or rent to suit your personal circumstances



Super on-site amenities, including bistro, salon and gym on your doorstep



Extensive and varied programme of activities and events promoting wellbeing

Call to request a copy of our apartment plans and prices and to find out more about reserving your new home at Belong Chester.

📞 **01244 470 570**

✉ [enquiries@belong.org.uk](mailto:enquiries@belong.org.uk)

🌐 [www.belong.org.uk](http://www.belong.org.uk)



Your life, your pace, your way.

# DO YOU KNOW?

1. Installed in 1410, the world's oldest astronomical clock still in operation is in Prague.



2. Google.org is the charitable arm of Google, committing about US\$100 million in investments and grants to nonprofits annually.

3. Until 1948, 7-Up contained "lithium citrate", a mood stabilizer used to treat bipolar disorder.

4. The Museum of Bread Culture in Ulm, Germany, has a collection of over 18,000 objects, none of which is bread.

5. A cyberchondriac is someone who scours the Internet looking for details of their illnesses.



6. Cologne was originally produced as protection against the plague. It was widely believed that bad-smelling air spread the disease.

7. When you first meet people it is common to forget their names - a phenomenon called the 'next-in-line' effect. This is because people are too worried about themselves, and what they'll say next, to focus on remembering the names of people they're introduced to.

8. The world's most expensive perfume is Clive Christian No 1 Passant Guardant. It costs \$143,000 for 30ml and comes in a flask studded with 2,000 diamonds.

9. Ben & Jerry learned how to make ice cream by taking a \$5 correspondence course offered by Penn State, because one of them couldn't get into medical school and the other couldn't sell enough pottery.



10. Research has shown that dogs actually like the silly, high-pitched voice their owners use to talk to them.

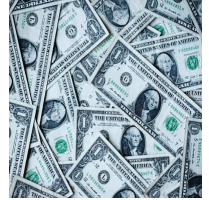
11. Mantis shrimps' eyes are more evolved than those of humans: they have four times as many colour receptors and can see UV, visible and polarised light.

12. 1 in 3 children can use a tablet before they can speak, a survey found.

13. Lin Ching Lan is a deaf Taiwanese professional dancer and choreographer who feels the vibrations of music through wooden floors.

14. King Abdullah of Saudi Arabia was shocked when Queen Elizabeth II drove him around her estate, since women couldn't drive in his country.

15. U.S. paper money is not paper at all: It's 75 percent cotton and 25 percent linen. In Ben Franklin's day, people repaired torn bills with a needle and thread.



16. Your brain might account for only about 3 percent of your body weight, but it receives about 30 percent of the blood being pumped by your heart. This shows how much attention and support it requires in comparison to the other seemingly important areas of your body.

17. The two parts to the word "helicopter" are "helico" meaning spiral, and "pter" meaning one with wings, like pterodactyl.

18. Before he was a famous musician, Johnny Cash was a military code breaker for the US Air Force.

19. Even though Froot Loops are different colours, they are all the same flavor.



20. A 'bobsled' is so named because early racers bobbed their heads back and forth to gain speed (which didn't work).

21. The first manager of the first McDonald's franchise was called Ed MacLukie.



22. Melania Trump secured a 'genius visa' for 'extraordinary ability' while dating Donald Trump.

23. Chicago has over 60 coyotes fitted with radio collars roaming the city, eating small rodents, especially rats and voles.

24. A whole orange will float on water, but a peeled orange will sink.

25. The Moon gets hit by over 6,000 pounds (2800 kg) of meteor material per day.



# BROWSERS EMPORIUM

[www.browsersemporium.com](http://www.browsersemporium.com)

**It's an Aladdins Cave of Treasures**

You name it and we've probably got it!



**Order Online  
Click + Collect  
Please phone  
for assistance**

**All types of new & second-hand furniture & fittings to browse under one roof!**

**From bulbs to lights, door handles to doors & stools to tables!**



Hooton Works, Hooton, Wirral (Junction 5 - M53) off A41 to Chester Next to Corfe's)

**Tel: 0151 328 1467**

Open: Mon-Sat from 9am - 5pm



All credit cards accepted

## OAKWOOD FARM MEWS

You can look forward to a warm welcome at Oakwood Farm Mews. We provide modern en-suite accommodation. We are situated on the outskirts of Chester and are conveniently located for Chester Races and the M56 link to Manchester and Liverpool & North Wales.

- Full en-suite accommodation
- 9 Spacious comfortable rooms with Free WIFI
- From £50 per night
- A pet stay room at an additional £10 per night.



## Oakwood Farm Touring Park

Here at Oakwood Farm Touring Park. We provide fully serviced hard standing and grass touring pitches, and a new modern heated shower block.

- A choice of fully serviced pitches
- Free Wireless Internet
- £30 per night for caravans
- £25 per night for tents
- Café on site



Spacious pitches in idyllic settings.



Oakwood Farm Mews & Touring Park, Oakwood Farm, Parkgate Road, Chester CH1 6EY

W: [www.oakwoodfarmmews.co.uk](http://www.oakwoodfarmmews.co.uk)

W: [www.oakwoodfarmtouringpark.co.uk](http://www.oakwoodfarmtouringpark.co.uk)

e: [oakwoodfarmchester.co.uk](mailto:oakwoodfarmchester.co.uk)

**Telephone: 01244 880828**



**Roll Right Limited**

**Electric Roller Shutter Garage Doors**  
01430 871161

**Electric roller garage doors**  
**FROM £745!**

**Call now to book your free**  
**survey!**

**\* No deposit**

**\* Manufactured and installed**  
**by us**

**\* Insulated**

**\* Compact and secure**

**\* Over 20 colours**

**\* Components from UKs most**  
**trusted suppliers**



**£745!**  
**FULLY FITTED**  
**INC VAT**

**INFO@ROLLRIGHTLTD.CO.UK**

**01430 871161**

Roll Right Limited  
Electric Roller Shutter Garage Doors  
01430 871161



**Comley**  
FENCING

**MANUFACTURERS, SUPPLIERS AND**  
**INSTALLERS OF QUALITY FENCING.**

- **FENCING**
- **SHEDS**
- **PAVING**
- **CONCRETE**
- **TURFING**
- **POSTS/BASE**

**OPEN TO THE PUBLIC/TRADE**

**FREE QUOTE**

**CALL 01244 534444**

**MOBILE 07555 490375**

**The Old Stables, Station Road,**  
**Sandycroft, CH5 2PT**  
**Email: comleypaving@hotmail.com**



**J.SIRESHUK**  
**PIANO SERVICES | CHESTER**

**Call - John**  
**01244 637 377**  
**07711734292**

*...prompt attention*  
*and a personal*  
*service at all times*



**Piano Tuning**

**Renovation**

**Polishing**

**Overhalls**

**Free Quotes**

**Pianos Bought**

**Pianos Sold**

**The Cottage, Hoole Road, Chester, CH2 3NN**

**www.johnpiano.co.uk**  
**email.john.piano@uwclub.net**

# What will your 'new normal' be?

*"When  
nothing  
is certain,  
everything  
is possible"*



~~Lonely~~ Community  
~~Worry~~ Security  
~~Retired~~ Inspired



What do you want your '**new normal**' to look like in retirement? Our village is ready for you.  
Apartments from £238,000\*  
**Get in touch today.**

  
**Gifford Lea**  
*Inspired* in Cheshire

Ready for your *best* years?

01829 238 793 | [giffordlea.co.uk](http://giffordlea.co.uk)

\*Prices may vary upon viewing

# WORKTOPS & REPLACEMENT DOORS

FREE HOME CONSULTATIONS (FOLLOWING COVID GUIDELINES)

## Want an over-the-top kitchen fast? Then try The Top That Fits on Top.



 *Janet*  
TREND  
DESIGN  
GURU

**0%**  
**FINANCE**  
**AVAILABLE**

*\*Terms & conditions apply*

### JANET'S SMARTER WAY TO RENOVATE:

- ✓ Fitted in as little as a day
- ✓ Heat, stain & scratch resistant
- ✓ Fits directly over existing surface
- ✓ Maintenance free with ForeverSeal®
- ✓ Little to no demolition
- ✓ Built-in 24/7 Microban® protection

**For a free consultation by phone or at home call:**  
**ELLESMERE PORT SHOWROOM: 0151 434 4880**

Junction 8 Business Park, CH65 3AS

**BURTON DISPLAY:** Gordale Garden Centre, Burton, CH64 8TF

**SPEKE DISPLAY:** Dobbies Garden Centre, Speke L24, 1UX

**[trend-transformations/Ellesmereport](https://trend-transformations.com/Ellesmereport)**

 **TREND®**  
transformations

KITCHEN & BATHROOM MAKEOVERS

GRANITE | QUARTZ | RECYCLED GLASS | TILES | REPLACEMENT DOORS

**[trend-transformations.co.uk](https://trend-transformations.co.uk)**



# dental solutions

We **LOVE** to make you **SMILE...**

## BESPOKE DENTURES

Natural looking dentures  
beautifully created just for you  
We believe in treating our clients  
with dignity and discretion

## WHAT OUR CLIENTS SAY

“The moment I met Philip and his team  
I knew I was in safe hands. Everyone was  
patient, caring and professional.”

*Doreen - Wirral*

## IMPLANT RETAINED DENTURES

Many patients who have chosen to have  
implants, report they are happy and  
comfortable for the first time since the  
loss of their natural teeth.



**Smile we're local**  
Junction 3 M53



**CALL US TODAY**  
**0151 678 9833**  
**PLEASE CALL US FOR**  
**A FREE CONSULTATION**

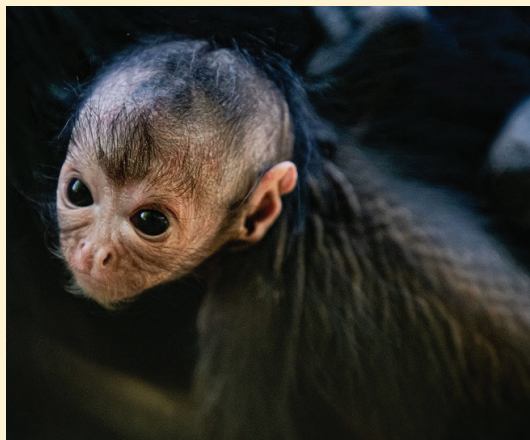
Dental Solutions Denture Clinic  
399 Upton Road Prenton Wirral, CH43 9SE  
[www.dentalsolutions.co](http://www.dentalsolutions.co)



# OUR ZOO

## What's happening at Chester Zoo.

**We are celebrating the birth of a threatened spider monkey.**



**The rare baby primate, a Colombian black-headed spider monkey, has been spotted being cradled in the arms of experienced mum, Kiara (11).**

Colombian black-headed spider monkeys are considered vulnerable by the International Union for the Conservation of Nature (IUCN) and are at risk of extinction, with more than a quarter of its population estimated to have been lost in just the last half a century.

The South American primates are found mainly in Colombia and Panama where they are being increasingly threatened

by hunting, illegal trafficking and the destruction of their tropical rainforest habitat.

Conservationists say the latest arrival at the zoo is an important boost to the international breeding programme, which is working to protect the species.

Dr Nick Davis, Deputy Curator of Mammals and primatology expert at the zoo, said: *"Colombian black-headed spider monkeys are vulnerable to extinction and so Kiara's precious newcomer is a great addition to the international breeding programme for the species."*

*"It's fantastic to see Kiara cradle her new baby closely - she's an experienced mum so has slipped right back into motherhood. The infant will start to venture off after around 6 months, but they'll stay close to mum for about 12 months when the little one will be strong and confident enough to forage for food and climb independently. Keepers will be able to determine the sex once the infant starts to leave mum in a few months' time."*

*"This species gets its name from its appearance - their long, narrow limbs, long tails and black fur make them look*



To save Chester Zoo head to: [www.chesterzoo.org/saveourzoo](http://www.chesterzoo.org/saveourzoo)



*almost spider-like. Their tails are often longer than their bodies and can be up to 85cm long, which acts as an extra limb, allowing them to move between tree branches while collecting food with their hands.*

*“They’re incredibly agile and fascinating to watch, spending the majority of their time high up in trees, leaping up to a distance of nine metres. They can walk in an upright position and communicate through high-frequency whinny vocalisations.*

*“The social structure of a group of spider monkeys is quite different to most other monkey species and the group here at Chester has proved to be really important to our wider scientific understanding of the species. Numerous conservationists and researchers have studied the spider monkeys here – developing methods for recording behavioural data which they’ve then transferred and applied to vital conservation action in the field.”*

### Colombian black-headed spider monkey facts:

- Latin name is *Ateles fusciceps rufiventris*
- **Kiara’s baby was born on 29/08/2021**
- Mum is 11 years old while dad, Popoyan, is 32
- **A single infant is born and is cared for by its mother until around the age of 20 months**
- The species is classed as vulnerable in the wild by the International Union for the Conservation of Nature (IUCN), meaning they face a very real threat of extinction
- **They are native to Colombia and Panama**
- The species is under pressure from a high rate of habitat loss due to deforestation and huge hunting pressure
- **Their diet consists of fruit but they’ll also occasionally eat leaves, flowers and insects.**



# HAVE YOU BEEN THE VICTIM OF MEDICAL NEGLIGENCE?

We all put our trust in the medical judgement and information we are given by qualified health professionals and practitioners, but sometimes their advice or treatment can result in things going wrong.

There are many points from the first doctor's appointment to treatment options where errors can be made, and unfortunately these cases are on the rise.

Our Solicitors specialise in all areas of medical negligence including:

- Brain Injuries
- Anaesthesia related complications
- Cancer Misdiagnosis
- Failure to treat Diabetes
- MRSA Negligence Claims
- Orthopaedic Injuries
- Child Injuries
- Birth Defects
- Misdiagnosis of Fractures
- Spinal and Neck Injuries

**ENQUIRE TODAY...**

**CALL 0151 306 3694 OR VISIT:**

**PHOENIXLEGALSOLICITORS.CO.UK**

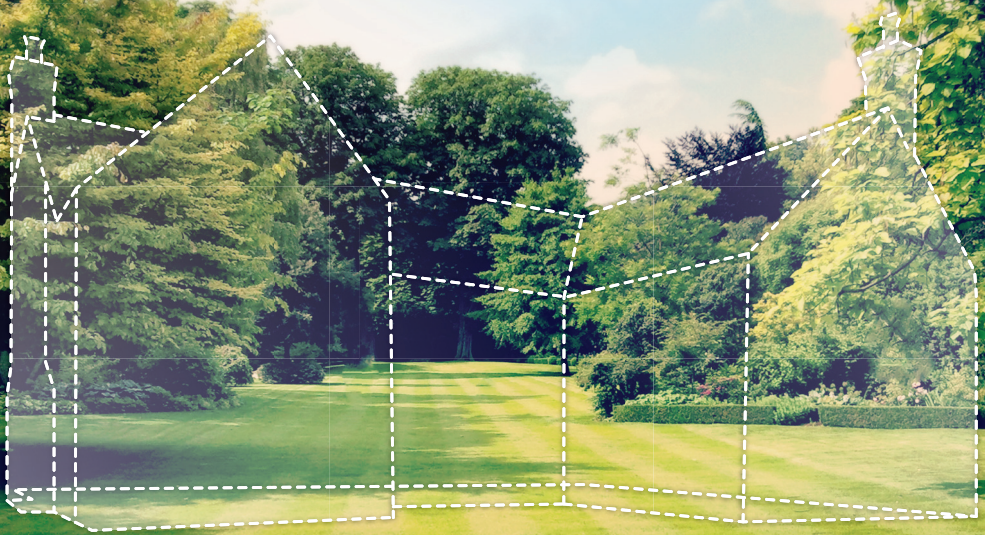


**PHOENIX SOLICITORS**



## Why not in your backyard?

---



Est. 1981 ▶ With or Without Planning  
Self-Build Opportunities ▶ Award Winning

## Land to sell?

Do you have a large garden plot? Do you own a field adjoining your property? With or without planning permission, we may be interested in purchasing this land. Realise your investment. Talk to us today.

01829 730 244 | [land.cbhomes.co.uk](http://land.cbhomes.co.uk)



**Based in the heart of Cheshire, CB Homes has been designing and building award-winning homes since 1981. From beautiful turnkey self-build projects to distinctive developments and exclusive barn conversions, each bespoke home we build is constructed to the same exacting standards.**

We are always on the lookout for suitable land to purchase, with and without planning permission. If you have a large garden which you are interested in developing, or you own land or buildings that you wish to sell, we might be interested in purchasing it for an exclusive bespoke development or the construction of a custom home.

With a proven track record for delivering a dedicated and reliable service, you can trust us to purchase your plot of land of any size at a fair and competitive price.

### **Award winning bespoke homes**

Our craftsmanship and quality of our building work have been recognised by many local, regional, and national awards. We have established an enviable reputation, based on our core values of professionalism, reliability, and trust.

We have a wide variety of options available to landowners, from an outright sale to a joint venture or profit share, or you may even want to develop for yourself for an investment or new home.

### **Free planning appraisal**

We offer a free, no obligation, planning appraisal service to assess your land. We can work with you to maximise the planning potential and land value. Our team of professionals completes all aspects of the planning work, managing the application through to a decision, with no cost or risk to you.

If you are interested in unlocking the financial potential of your land, please get in touch with us by calling 01829 730244 or email [enquiries@cbhomes.co.uk](mailto:enquiries@cbhomes.co.uk). Visit <https://land.cbhomes.co.uk/> to find out more.



**OVER 20 YEARS EXPERIENCE**

**NGL TARMAC AND DRIVEWAYS**  
Domestic and Commercial

- **DRIVEWAYS** • **LANDSCAPING**
- **CONCRETE** • **BLOCK PAVING**
- **TARMAC** • **RESIN BONDED GRAVEL**





Day: **07858 576719** Eve's: **01978 843398**  
[www.ngldriveways.co.uk](http://www.ngldriveways.co.uk)

## Nathan's Tree Surgery

*NPTC Qualified*  
*£5 Million Liability Insurance*



- **Felling**
- **Pruning**
- **Reducing**
- **Fencing Services**
- **Dismantling**
- **Hedge Maintenance**

**Call:**  
**01948 818743**  
**07534077755**  
 1 Woodcroft, Lacon Street,  
 Prees nr. Whitchurch, Shropshire SY132EL

# TARVIN LOGS

**KILN DRIED LOGS AVAILABLE**






**SEASONED LOGS - FULL OR HALF LOADS**  
**DUMPY BAGS OR NETS OF KINDLING**  
**FREE LOCAL DELIVERY**  
**07936 148566**  
[www.tarvinlogs.co.uk](http://www.tarvinlogs.co.uk)  
**CROSS LANES, TARVIN, CHESTER,**  
**CHESHIRE CH3 8HS**



**Frodsham Gates & Fencing**  
 are Manufacturers of Quality  
 Wooden Boundary Solutions

White Primed Free Standing  
 Weddings/Events Picket Fencing

Garden Gates/Driveway Gates/  
 Picket Gates & Fencing/  
 Feather Edge Panels

**Fitting Service - Please Call for Free Quotation**

**DESTAL Ltd also offer an export wooden  
 case/crate manufacturing and packing service**  
 (Picture below is our NEW Urban Fencing)



**11 Europa Court, Dee View Boulevard,  
 Chester, CH1 4NP**

**Tel: 07725 235 747 / 07725 235 760**  
[www.frodshamgates.co.uk](http://www.frodshamgates.co.uk)  
 Email: [sales@frodshamgates.co.uk](mailto:sales@frodshamgates.co.uk)

# THIS MONTH'S HISTORY

This feature each month will give interesting facts from years gone by. See what you remember that happened in your lifetime.

## THIS DAY IN HISTORY FOR THE MONTH OF NOVEMBER

### 2nd November 1936

The world's first regular TV service was started by the British Broadcasting Corporation, from a converted wing in Alexandra Palace. 'Ally Pally' housed two studios, various scenery stores, make-up areas, dressing rooms, offices, and the transmitter itself, which then broadcast on the VHF band. An estimated 100 TV owners tuned in.



### 11th November 1918

After four years and 97 days, the guns finally fell silent at the agreed-upon time - the 11th hour of the 11th day of the 11th month - the war abruptly halted and suddenly it became so quiet you could hear a watch ticking as the Great War ended (it was said). Around 9 million lives were lost with a further 27 million injured.



### 29th November 1641

England's first 'newspaper' is published.

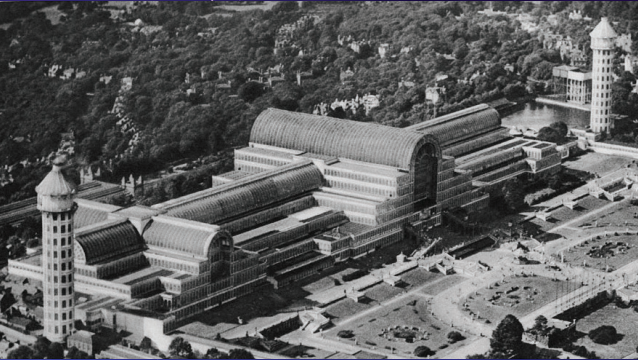
The first newsbook was published in November 1641, and in the years 1641-2 there were 171 different editions available. The newsbooks were strongly partisan until Parliament regained control of the press in September 1649.

Newsbooks often contained satirical poems, or otherwise formal reports of major news events.



*Note it did not look like this modern day newspaper, it was much smaller and had far few pages!*

**30 November 1936**



One of London's best-loved landmarks, the Crystal Palace burned down. The huge glass building originally housed the Great Exhibition of 1851.

Designed by Sir Joseph Paxton, it was a remarkable construction of prefabricated parts. It consisted of an intricate

network of slender iron rods sustaining walls of clear glass. The main body of the building was 1,848 feet long and 408 feet wide; the height of the central transept was 108 feet. The construction occupied some 18 acres on the ground, while its total floor area was about 990,000 square feet (about 23 acres). On the ground floor and galleries there were more than 8 miles of display tables.

Some 14,000 exhibitors participated, nearly half of whom were non-British. France sent 1,760 exhibits and the United States 560. Among the American exhibits were false teeth, artificial legs, Colt's repeating pistol, Goodyear india rubber goods, chewing tobacco, and McCormick's reaper. Popular British exhibits included hydraulic presses, powerful steam engines, pumps, and automated cotton mules (spinning machines).

More than six million visitors attended the exhibition, which was open to the public until October 11. The event showed a significant profit, and a closing ceremony was held on October 15. Thereafter the building was taken down, and it was rebuilt at Sydenham Hill in Upper Norwood, overlooking London from the south.

For a number of years the Crystal Palace was the site of shows, exhibitions, concerts, football matches and other entertainments. On the night of November 30–

December 1, 1936, it was virtually destroyed by fire; the towers that survived were finally demolished in 1941 because they were deemed a conspicuous landmark for incoming German bombers.





## Community



**Pause for hope is a prayer initiative  
for dealing with cancer and on  
Sunday 14th November 2021 at 3pm  
St Columba's church,  
Plas Newton Lane Chester  
we will be holding our  
Chester Pause for Hope Service.**

### **Pause for Hope services are:**

- **Open** - Everyone is welcome and there is no need for a ticket; attendees can be of any faith, or none at all.
- **Ecumenical** - Representatives of all denominations lead the congregation in hymns and prayers.
- **Informative** - A short address is given by an invited speaker and a poem is read.
- **Musical** - A selection of music is played and choirs take part. Hymns are sung.
- **Reflective** - Individual candles are lit by members of the congregation for someone with cancer or in memory of someone lost to cancer.

## **Friendly? Single? Want to meet and keep new friends?**

Do you sometimes wish for a better social life?

If so, come and join us, where you can meet and make a new circle of friends, and enjoy good companionship. We meet every Wednesday at 7.30pm at various locations where there is good car parking, and a bar with a nice relaxed atmosphere.

Members organise various social events including meals out each Saturday evening, theatre visits and many other activities.

Our group of like minded unattached people enjoy getting out and about, and are happy to consider suggestions for trips and outings from all members.

Newcomers will be made most welcome. If you would prefer, we can arrange to meet you at the door.

For more information ring Brian on 0151 6481516, or Eileen On 01244 661873

**Only £895 for  
a fully fitted  
electric door.**

**Gotta get a Garolla.**



Garolla garage doors are strong and solidly built. They're made to measure in our own UK factories. The electric Garolla door rolls up vertically taking up only 8 inches inside your garage. Our expert installers will fit your new door and take away the old one so there's no mess.

Give us a call today and we'll come and measure up for free!

**GAROLLA**  
**ROLLER  
SHUTTER  
DOORS**



**GOTTA GET A GAROLLA**

NOW ONLY

**£895** WAS £1,354  
INC VAT

WHAT'S INCLUDED :

FREE MEASURING & FITTING

TWO REMOTE CONTROLS

ACOUSTIC & THERMAL INSULATION

AVAILABLE IN 21 COLOURS

FREE DISPOSAL OF OLD DOOR

Offer valid for openings up to  
2.6m wide & inc: 2 remote  
controls, 55mm white slats,  
internal manual override.

CALL US TODAY

**01244 960 169**

MOBILE

**07537 149 128**

**www.garolla.co.uk**



**Wirral Estate Planning**

**DON'T BE CAUGHT NAPPING!!**

**LASTING POWERS OF ATTORNEY  
FOR  
HEALTH & FINANCE MATTERS**

**SINGLE: £240 FOR BOTH  
COUPLE: £360 FOR BOTH**

**\*\* INCL VAT & HOME VISITS \*\***

**Call: 0845 052 2757 (std rate)**

**info@wirralestateplanning.co.uk**

**Visit our website:  
www.wirralestateplanning.co.uk**



## The history of our Poppy Appeal

by Maxine Williams - Editor  
Information kindly supplied by  
Ruth Jones - Community Fundraiser for  
West Cheshire

**After attending a talk on the history of the poppy appeal, I was amazed at our local involvement so I thought I would share some information with you!**

Moina Michael, inspired by John McCrae's poem 'In Flanders Fields', is often cited as the originator of the poppy as a symbol of Remembrance having convinced the American Legion Auxiliary to adopt it as their symbol in 1921.

But Anna Guérin was simultaneously promoting the idea of the poppy as the symbol of Remembrance and by the end of 1920 she had been responsible for Poppy Days in several US states and was turning her attention further afield. In September 1921 she arrived in Liverpool and set out for London convinced that she could persuade the fledgling British Legion to accept her idea. She also knew she could help it to organise the appeal nationwide. Her experience of fundraising and working with women's groups, many of whom were war widows, had convinced her of the value of using women as volunteers to create a network of distribution and collection.

At the end of WWI based at what is now Sir Frederick Lister House on the edge of the historic Birkenhead Park, Lance-Bombardier Tom Lister spent much of his spare time delivering hot food and warm clothing to veterans living rough on Bidston Hill. He saw that they had little or no help and something needed to be done. He was a leading advocate for the foundation of the British Legion in the aftermath of the First World War along with Field Marshall Haig who felt that there was a need for one large organisation to support all the Armed Forces, including Officers, that would hold the Government to account on behalf of the men and women it represented.

On Sunday 15 May 1921, a small group of ex-Servicemen and representatives from the four organisations, The National Association of Discharged Sailors and Soldiers, The British National Federation of Discharged and Demobilized Sailors and Soldiers, The Comrades of The Great War and The Officers' Association walked to the Cenotaph, in London's Whitehall. These organisations laid a wreath with the badges of the four organisations that would officially unite to form the British Legion.

Earl Haig was appointed as the British Legion's first President and Sir Frederick Lister the National Chairman. The British Legion was founded by and for Armed Forces personnel and as a demonstration of its attitude towards its members the constitution was proposed by a soldier and seconded by a General - there would be no distinction between rank, religion or political affiliation.

## The first Poppy Appeal

Thanks to the efforts of Anna Guérin – Lord Douglas Haig had been touched by the Poppy and The newly formed Legion adopted it as part of its appeal fund. Nine million Poppies were ordered for the first Poppy Day on 11th Nov 1921 – never sold for a fixed price, but given in exchange for a Voluntary donation – it raised £106,000 – the equivalent of £3.1M today.

At first they were made of silk but the following year thanks to a suggestion of the Disabled Society they were made by disabled veterans in the Poppy Factory in Richmond which still makes some of the Poppies today. More than 35 million paper poppies are made on the Royal British Legion's automated production line in Aylesford, Kent, and at the Lady Haig factory in Edinburgh, but tucked away on Richmond's leafy Petersham Road is the original Poppy Factory, where a small team is proud to be part of history.



Moina  
Michael



Anna Guérin



Sir Frederick  
Lister



Lord Douglas  
Haig



Early Poppy Sellers

## 2021 marks 100 years of The British Legion & the Poppy Appeal

*'For 100 years the Royal British Legion has been helping serving and ex-serving personnel and their families.*

*From those who served in the First World War to the men and women of our Armed Forces today, we believe no-one should suffer for having served others.*

*As we reflect on our achievements over the last 100 years, we stand ready to support the next generation when they need us.'* Royal British Legion.

**TODAY** they are in need of people to help collect at Supermarkets. Changing work patterns and ill-health etc. have lead to a shortage.

Volunteers are required for half days in most major supermarkets across West Cheshire and Wirral and you do not need to be ex-military or a member of the Legion.

Its fun and very rewarding. I have been helping for several years, as I will be this year.

**Further information is available at [www.britishlegion.org.uk](http://www.britishlegion.org.uk)  
To contact Ruth Jones call: 0776 823 8875**





## Magical Christmas event 'The Lanterns' returns to Chester Zoo



Chester Zoo has revealed its plans for its wintertime celebration, The Lanterns.

Now in its tenth year, visitors to the event are given the unique opportunity to experience the zoo after hours on a set trail in the dark – taking them through spectacular illuminations and colourful lanterns, encountering enchanting costumed characters along the way.

Among the many new elements at this year's festivities will be brand new illuminated characters, featuring orangutans, butterflies, caterpillars and wolves as well as a 90th birthday light show, taking visitors on a journey through time as they explore the zoo's history.

Conservationists at the UK's most popular zoo say that the event will support the zoo's crucial work as a wildlife conservation charity and will help with its recovery following the impacts of the Covid-19 pandemic.

Senior Admissions and Retail Manager at Chester Zoo, Gemma Bamford, said: "We can't wait to welcome visitors back to our very special Christmas event, The Lanterns. It's become a firm favourite and something of a family tradition for so many people now and this year will be more magnificent and magical than ever.

*"The event will see the zoo transform into a spectacular winter wonderland, where guests will be welcomed into an exotic world of colour and movement, where larger than life illuminations and animal characters await.*

*"This year's theme is all about shining a light on species that face a fight for survival in the wild, where numbers of many of these incredible animals are plummeting to worryingly low levels. Never-before-seen illuminations of orangutans, butterflies, caterpillars and wolves are just a few of the species that will feature as part of our 'into the wild' theme.*

*"It's the zoo's 90<sup>th</sup> birthday year and so another hugely exciting new area will celebrate our anniversary through a special light show - taking visitors on a journey through time as they explore our history.*

*"Lots of firm family favourites will also be returning this year, like Father Christmas, the zebras, elephants and lions who are sure to put on a fantastic show."*

The Christmas celebration, which has previously received widespread public acclaim, will again have a restricted capacity this year due to the ongoing global Covid-19 situation.



However, the zoo will be offering more timed entry slots than ever before, providing more people with an opportunity to enjoy the festive fun.

Gemma added:

*"It's been another strange and challenging year for everyone and so we're just thrilled to be able to provide our guests with some much needed Christmas cheer. We know how much people are looking forward to getting out and about this Christmas and doing something lovely with their loved ones, so we've added five extra nights and more time slots this time around - giving more opportunities for people to come and see The Lanterns."*

*"This event is an important step on the road to our recovery after all of the different challenges we've faced in recent times and will help us raise valuable funds, supporting us to continue our mission of preventing extinction all around the world."*

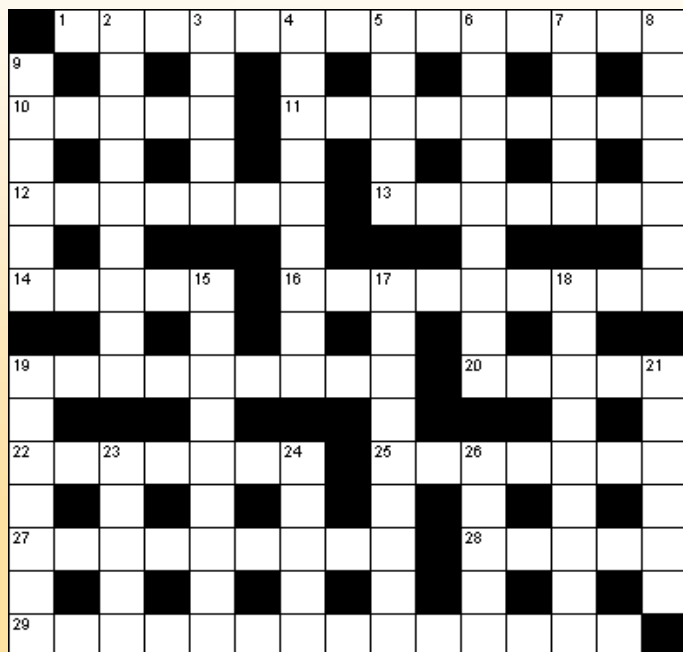
**The Lanterns has been created by the zoo in partnership with multi award-winning outdoor arts producers, Wild Rumpus.**

Tickets are now on sale for selected dates from Friday 12 November - Thursday 23 December 2020 with slots available from 4pm – 8.15pm. Child tickets start from £11 and adult tickets start from £13.

**For full information and to book tickets, visit:**  
[www.chesterzoo.org/lanterns](http://www.chesterzoo.org/lanterns)



# PUZZLE CORNER



## Down

- 2 Sat on (eggs) (9)  
 3 Wicker basket (5)  
 4 Hills (9)  
 5 Savor (5)  
 6 Infamous (9)  
 7 From Ireland (5)  
 8 Make less heavy (7)  
 9 Covered with scabs (6)  
 15 Perception (9)  
 17 Guided by practical experience (9)  
 18 Immobile (9)  
 19 Stalemate (7)  
 21 Imbedded (6)  
 23 Pertaining to sound (5)  
 24 Chieftain (5)  
 26 Browned slices of bread (5)

## Across

- 1 Indirect proof (14)  
 10 A recurring sequence of events (5)  
 11 Disturbing (9)  
 12 Small ornament (7)  
 13 Within the range of hearing (7)  
 14 Abominable snowmen (5)  
 16 Sudden inward collapse (9)  
 19 Country in southeast Asia (9)  
 20 Another name for Peter the Apostle (5)  
 22 A journey by ship (7)  
 25 Reasons behind actions (7)  
 27 Feeling (9)  
 28 Stroll (5)  
 29 Odd behaviors (14)

## Sudoku Puzzle

How to play:

The numbers 1 through 9 will appear once only in each row, column, and 3x3 zone.

There are 9 such zones in each sudoku grid.

There is only one correct solution to each sudoku. Good luck!

Difficulty level: Medium.

Solutions can be found on our website

				7			8	5
			2					4
1		3		6	8			9
9								
						2		7
6			9	8				
				3			4	
	4			2				3
	9		7		1			

*Justine is...*  
**Totally TINA!**

THE ORIGINAL, AWARD-WINNING  
TINA TURNER SPECTACULAR!



SATURDAY 6TH NOVEMBER 2021 - 7.30PM

**THEATRE ROYAL, ST HELENS**

BOX OFFICE: 01744 756000

[sthelentheatreroyal.com](http://sthelentheatreroyal.com)





## Come rain or shine

**The winter programme for Chester Rambling & Hill Walking Club has been despatched to members, and we're avidly looking ahead to see what our walk leaders have lined up for us over the next few months. During the crossover time between summer and autumn, it's also good to look back on our activities of previous weeks. Generally it was a lovely summer, with only a handful of wet walks, and many days when it was possibly too hot for a hike in the hills! Even our two camping trips, in Teesdale and the Peak District, were mostly blessed with warm sunshine. However, with the daylight hours getting shorter, Club walks tend to happen in less distant places.**

Luckily, Chester is ideally situated, with a host of beautiful walking destinations less than an hour's drive away. One autumn walk took us to familiar territory in the Clwydian Hills, starting from a car park near Moel Famau. On that cloudy morning, we veered away from the summit, using footpaths that circle the lower hillsides of the Alyn Valley. Our route took us firstly up to Fron Hen, which, despite being one of the less lofty Clwyds, offers a sweeping view across the valley to Bryn Alyn and Moel Findeg. It was towards Bryn Alyn we now headed, not climbing to the top, but staying on a footpath along the edge of Big Covert Wood, emerging near the former mining village of Maeshafn. Here, we took a track leading into Aberduna Nature Reserve, a gorgeous area of mixed woodland, grassy plateaus, limestone outcrops and

great views across the Alyn Valley. The site wasn't always this pleasant, however. Prior to 1993, there was a limestone quarry here and a stark barren landscape met the eye. Thankfully, nature has made a comeback!

Autumn weather is unpredictable, and just after midday darker clouds gathered, a sure sign of wet things to come. As weatherproof gear started to appear from backpacks, I realised with alarm that I was missing one vital piece of kit – my raincoat! Fortunately, another member had an umbrella with him and kindly proffered this. We tend not to walk with umbrellas up for a number of reasons, but they can come in handy if a downpour starts as you settle for your lunchtime sandwich. We'd planned to stop in a field with a lovely view, but heavy rain meant plan B was activated, and although squatting under dripping trees wasn't ideal, it was preferable to sitting in the open getting drenched. The rain was heavy but short-lived, luckily.

Crossing the River Alyn, our walk took us close to Loggerheads Country Park but Sue, our leader, opted for less populated tracks along undulating fields and woodland to get us back to the car park.

After our 8-mile walk, we sat outside the Druid pub at Llanferres, enjoying a refreshing drink in unexpected sunshine, the earlier rain but a distant memory.

There's a moral to this tale. No matter how rushed the pre-walk preparations may be, always check you've got those vital bits of kit with you to cover all eventualities – lunch, water, sunhat, woolly hat, gloves.... and a waterproof coat!

You'll also need to carry OS Explorer Map 265 with you on any exploration of this area. Alternatively, if you fancy discovering new walking areas in Cheshire and North Wales with experienced and knowledgeable leaders, joining a local hiking group could be for you.

**To find out more about Chester Rambling & Hill Walking Club head over to our website: [www.chesterwalkingclub.com](http://www.chesterwalkingclub.com) or take a look at our Facebook page to see what we're up to.**

Joining details can also be obtained by emailing [chesramclub@yahoo.com](mailto:chesramclub@yahoo.com)  
Maria Owen, Press Officer, Chester Rambling and Hill Walking Club

# PURE

CONSERVATORIES

CONSERVATORIES | ORANGERIES | CONSERVATORY ADAPTATIONS

Call us on:  
**01244 555032**

**BEFORE ROOF INSTALLED**



The only system  
that comes with  
planning consent.  
Call us today for a  
**FREE** quotation.

We are  
working  
safely  
during  
**COVID-19**



**Transform your conservatory  
into an all year round living space**

**NORTH WEST  
No. 1  
INSTALLER**



**AFTER ROOF INSTALLED**

*A local family run firm you can trust*

# FREE EXPERT ADVICE

# PURE

## CONSERVATORIES

HOME EXTENSIONS | GARDEN ROOMS | REPLACEMENT GLASS

**BEFORE**



**AFTER**

- A wide range of tiles and colours
- Lighting & Plastering included
- Upgrade your frames or glass
- Fully trained installation teams



[www.pureconservatories.co.uk](http://www.pureconservatories.co.uk)



# BILLY HILL INTERIORS

## CURTAIN DESIGN STUDIO



## WE HAVE MOVED

Come and visit us at  
our new showroom  
with free parking

Stunning new 6000sqft Showroom  
in the heart of Bebington Village

- ♥ Made to measure curtains, blinds and soft furnishings
- ♥ free 'in home' design service
- ♥ beautiful sofas and home accessories
- ♥ select from over 80,000 fabrics
- ♥ curtain and blind installation service available

**6 Church Road, Bebington, Wirral, Merseyside CH63 7PH**

www.billyhillinteriors.co.uk Email: billyhillinteriors@yahoo.co.uk



billyhillinteriors billyhillinteriors



**Telephone: 0151 334 2266**