

# LOVE CHESTER

## MAGAZINE



JUNE 2021  
Issue 50

Monthly Business & Community magazine delivered in & around Chester



**love-chester.com**   

ONCE YOU HAVE READ ME PLEASE PASS ME ON TO SOMEONE ELSE!

Call: **01244 555 244** or email: **info@love-chester.com**



# VIKING QUEST

## 18 HOLE ADVENTURE GOLF



**OPEN  
7 DAYS**

**A fun day out  
for all the family**



**Moreton Hills Golf Centre, Tarran Way South,  
Moreton, Wirral CH46 4TP**

**0151 3631873**

[www.vikingquestadventuregolf.co.uk](http://www.vikingquestadventuregolf.co.uk)





**We provide a complete range of Property Services for homes, offices, schools, shops and other commercial premises.**

## Our **BUILDING** Services include

- Garage Conversions
- Loft Conversions
- Property Refurbishment
- Replacement Windows and Doors (including Bindfold Doors)
- Building Repairs
- Bathroom Refits
- Kitchen Refits



## Our **COMMERCIAL BUILDING** Services include

- Commercial and Shop Fit Outs
- Investor Project Management, including HMO Conversions
- Property and Building Maintenance
- Bespoke Joinery
- Full Electrical Services

## Our **SPECIALIST OAK & GENERAL JOINERY** Services include

- Alcove Cabinets and Shelving
- Oak Framed Garages and Out Buildings
- Porches
- Cabinets
- Stairs
- Oak Doors and Windows



@titanpsltd

**Our Specialist Joinery team are here to help with any enquiry**

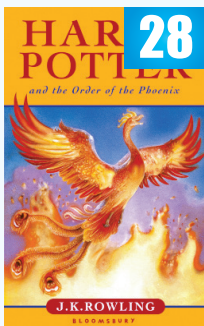


# WHAT'S IN THIS MONTHS LOVE CHESTER MAGAZINE



16

**What's Happening At Our Zoo**



28

**This Month In History**



32

**Recipe**



36

**Support Local Charities**



38

**Puzzle Corner**

## Love Chester

**The Local Magazine for Businesses in and around Cheshire.**

Do You Know?	12
What's Happening At Our Zoo	16-17
The Secret Garden	21-24
This month in history	28-29
Chester Reflections Book by Paul Hurley	32-33
The Joshua Tree Charity	36
Puzzle Corner	38
Housing Disrepair/Tenancy Deposit Claim help	39
Rose Paterson Trust Charity	42
What's On	43

**Cover Photo: The Townhouse where you can find the Secret Garden see pages 21 - 24.**



**Dear Friends,**

I don't know what happened in May, we certainly didn't get the weather we were hoping for, fingers crossed for June!

We have some super new advertisers again this month, it is so lovely that we can get out and about safely, at last!

Our advertisers are quality, local and reliable tradespeople offering great services at affordable prices.

We have some great offers for new advertisers, all our contact details are on the front of the magazine. You may want to advertise in our Love Wirral magazine!

Look out for us on the road in our Love Wirral & Chester van.

Keep up to date with us on Facebook and our Facebook Group, Twitter or visit us at: [www.love-chester.com](http://www.love-chester.com)

**Best Wishes  
Maxine & Mike**



Circulation of this FREE magazine is distributed to Chester and its surrounding villages.  
Love Chester Magazine Limited Registered Office: 1st Floor 12 Church Road, Gatley, Cheadle, Cheshire, SK8 4NQ  
Company Number: 10588054

"Love Chester" is produced by an independent organisation; which is not connected to any other organisation, publication or groups.

All material is copyrighted and no part of this publication may be reproduced or transmitted without the written permission of the copyright holder.

Please note that we do not endorse any products or services of any advertisers. All advertisements and their content are accepted in good faith. Responsibility for copyright and the accuracy of the information provided lies with the advertiser.



# cheshire joinery *services ltd*

Bespoke hardwood windows and doors



**SUMMER  
OFFER!**

Kiln dried Hardwood Fire Briquettes  
10KG Bag £5  
10 Bags for £30  
20 Bags for £40  
Hardwood off cuts  
also available

Join us for a workshop tour and have  
a bag of briquettes on us!

Unit 1b, Barrowmore Estate, Gt Barrow, CH3 7JA  
[www.cheshirejoineryservices.com](http://www.cheshirejoineryservices.com)  
[info@cheshirejoineryservices.com](mailto:info@cheshirejoineryservices.com)  
**Tel: 01829 741751**







# Apartment-living in the heart of the city

People looking to stay active in later life are now able to reserve their place at Belong's latest state-of-the-art village, which is set to open early in 2022. Combining independent living with the availability of on-site support, life in Belong Chester offers the opportunity to be part of a vibrant village community, combined with the reassurance of living within a 24-hour care complex.

**RESERVE  
TODAY!**



-  Choose from 23 newly built one or two bedroom apartments
-  Option to purchase or rent to suit your personal circumstances
-  Super on-site amenities, including bistro, salon and gym on your doorstep
-  Extensive and varied programme of activities and events promoting wellbeing

Call to request a copy of our apartment plans and prices and to find out more about reserving your new home at Belong Chester.

 **01244 470 570**

 [enquiries@belong.org.uk](mailto:enquiries@belong.org.uk)

 [www.belong.org.uk](http://www.belong.org.uk)

  
**Belong**

Your life, your pace, your way.

Belong Chester | Sandstone Apartments, 36 City Road, Chester, Cheshire CH1 3AE



# Release of apartments at Belong Chester

Belong villages are designed to promote wellbeing and quality of life for older people, offering a range of accommodation, support and facilities, including a bistro, hair salon, gym, art studio and function rooms – all of which provide the venue for a diverse programme of events and activities.

With an emphasis on independence and choice, Belong's model ensures both the ability to adapt services as people's needs change and the diversity to suit couples requiring different levels of support.

For those with an eye on the future, independent living in a Belong village apartment is an ideal way to be part of a vibrant community, with a range of facilities on your doorstep, while knowing that there is back-up if needed.

The high specification, one- or two-bedroomed apartments are designed around the needs of older people, with walk-in showers, custom-built living facilities, a 24-hr emergency response and the option of a daily checking service. These are backed by the reassurance of living within a 24-hour

**RESERVE  
TODAY!**

complex that includes households providing round-the-clock support, including specialist dementia and nursing care, meaning there are always members of the Belong team on-site.

All Belong customers also have free access to our Admiral Nurse service: specialist mental health nurses providing advice for people living with dementia and their carers.

Located in the heart of the city, Belong Chester is within minutes of the train station and offers an ideal base from which to access to central shopping and leisure areas.

**Floor plans and prices packs for the apartments are now available on request, with Belong Chester due to open in early 2022. To receive further information, please contact one of our friendly team on 01244 470 570, or email [enquiries@belong.org.uk](mailto:enquiries@belong.org.uk)**



Your life, your pace, your way.

[www.belong.org.uk](http://www.belong.org.uk)



# HAVE YOU BEEN THE VICTIM OF MEDICAL NEGLIGENCE?

We all put our trust in the medical judgement and information we are given by qualified health professionals and practitioners, but sometimes their advice or treatment can result in things going wrong.

There are many points from the first doctor's appointment to treatment options where errors can be made, and unfortunately these cases are on the rise.

Our Solicitors specialise in all areas of medical negligence including:

- Brain Injuries
- Anaesthesia related complications
- Cancer Misdiagnosis
- Failure to treat Diabetes
- MRSA Negligence Claims
- Orthopaedic Injuries
- Child Injuries
- Birth Defects
- Misdiagnosis of Fractures
- Spinal and Neck Injuries

**ENQUIRE TODAY...**

**CALL 0151 306 3694 OR VISIT:**

**PHOENIXLEGALSOLICITORS.CO.UK**



**PHOENIX SOLICITORS**



# Tree care the right way

- Domestic and commercial tree care
  - Tree fellings and removals
- Hazardous & storm damaged trees
- Hedge cutting and tree planting

Cheshire, Wirral and surrounding areas

**01244 457 199 / 07901 247 976**

[www.treebayservices.co.uk](http://www.treebayservices.co.uk)



## FULLY FITTED ROLLER GARAGE DOORS

FROM

**£895** \* WAS ~~£1,354~~  
INC VAT

\* Offer Valid For Openings Up To 2.6m Wide & Inc:  
2 Remote Controls, 55mm White Slats,  
Internal Manual Override

### WHATS INCLUDED:

**ACOUSTIC & THERMAL  
INSULATION**

**TWO REMOTE CONTROLS**

**EXPERT MEASURING &  
FITTING**

**24 COLOURS AVAILABLE**



### **GAROLLA**

**ROLLER  
SHUTTER  
DOORS**  
[www.garolla.co.uk](http://www.garolla.co.uk)



Garolla can save a lot of space inside your garage. Rolls up vertically into a box. Takes only 8 inches of headroom! Opens vertically so you can park up close to the door. Remotely open/close the garage even from inside your car.

Made To Measure...

## **ROLLER GARAGE DOORS**

**CALL US TODAY**

**Phone:**

**0151 321 1905**

**Mobile:**

**07537 149 128**

CE  
Approved

Fencing  
Gates  
Sheds & Log Stores  
Decking  
Paths & Patios

# Justfencing

C H E S H I R E

Installers of quality timber fencing

**FREE NO OBLIGATION QUOTES**

**0151 336 7598 / 01244 470 120 / 07957 349 244**

[www.justfencingcheshire.co.uk](http://www.justfencingcheshire.co.uk)



# Comley

FENCING

**MANUFACTURERS, SUPPLIERS AND  
INSTALLERS OF QUALITY FENCING.**

- **FENCING**
- **PAVING**
- **TURFING**
- **SHEDS**
- **CONCRETE  
POSTS/BASE**

**OPEN TO THE PUBLIC/TRADE**

**FREE QUOTE**

**CALL 01244 534444  
MOBILE 07555 490375**

The Old Stables, Station Road,  
Sandycroft, CH5 2PT  
Email: comleypaving@hotmail.com



**DO YOU NEED A LITTLE  
HELP?**



**I provide the following services  
on weekdays, evenings and  
weekends.**

- **Shopping**
- **Prescription collection**
- **Food and Drink takeaway  
collection**
- **Dog walking**
- **Decluttering and Property  
care advice**
- **Hair styling in your home**



**If I can be of any help to you  
please call me, Suzanne, on**

**07495 708625**



*CJT Property*

- **Residential Lettings**
- **Commercial Lettings**
- **Property Management**
- **Tenant Find**

**www.cjtproperty.co.uk**

Email: info@cjtproperty.co.uk  
Wirral & North Wales:  
0151 314 5225  
Chester & Cheshire:  
01244 631 521

**STEAMY...  
FOGGY...  
MISTY...  
WINDOWS ?**



- **Yes, to The Above? Gary Can fix it!**
- **Broken Glass? Gary Can Fix it!**
- **Damaged Glass? Gary Can Fix it!**
- **Condensation? Gary Can Fix that to!**
- **You don't Need a New Window....  
You just need a Gary!**
- **Steamy, Foggy, Misted Double Glazing  
is a problem that's easily solved!**

**Affordable, Local above all Reliable**

**Call Gary the Glass on  
on 01244 630 102**







**Tel: 0151 336 6925**



Conservatory Erectors

Window Installers & Glaziers



Registered Company



## BUILDING

We understand the importance of achieving a customers vision and needs. Every project is completed to the highest quality and customer satisfaction is imperative. We aim to give customers confidence that we will keep disruption to a minimum and always work within a safe, clean and tidy environment.

## GLAZING

We are professional installers of windows, doors, bi folds and frameless glass extensions. Elliott Build & Glaze Ltd is a Fensa registered company and we are able to provide a 10 year insurance backed guarantee.

## PLANNING

From first contact with the customer to completion of the project, Elliott Build & Glaze Ltd can provide all services required to meet your needs, from full architectural design to the final fitting of the flooring. We aim make this experience as enjoyable and stress free as possible.

*A family run business which has been built on recommendation*



## CUSTOMER RECOMMENDATIONS

### Farrar - Greasby

"Both Alison and I would like you to pass on our thanks and best wishes to all of those involved at Elliott Build & Glaze Ltd in this project, as they have been very attentive and professional, as well as personable, throughout the project."

### Forshaw/Murray - Bebington

We are very happy with all the work and the high standard that was attained.

### O'Mally - Meols

"Scott and the team certainly gave us best in class service whilst they worked on our extension, kitchen and bathrooms. They kept us informed all the way and worked around our diaries to deliver the programme on time. We highly recommend them to anyone."

**[www.elliottbuildandglazeltd.co.uk](http://www.elliottbuildandglazeltd.co.uk)**



Email: [elliottbuildandglazeltd@live.com](mailto:elliottbuildandglazeltd@live.com)

Elliott Build & Glaze Ltd is a trading name of S R Elliott Build & Glaze Ltd.



# DO YOU KNOW?

1. Vanilla beans are the product of the world's only fruit-producing orchid, the *Vanilla planifolia*.



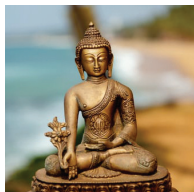
2. 9% of the Earth's oxygen is produced by the Amazon rainforest.

3. The coldest place on Earth is a high ridge in Antarctica where temperatures can dip below  $-93.2^{\circ}\text{C}$ .

4. Unlike many mammals, bears can see in colour.

5. Your brain keeps developing until your late 40s.

6. With over 520 million followers, as of 2019, Buddhism is the world's 4th-largest religion.



7. The smell of chocolate increases theta brain waves, which trigger relaxation.

8. Elephants can hear one another's trumpeting calls up to 5 miles away.

9. Our bodies contain about 0.2 milligrams of gold, most of it in our blood.

10. In 1990, Harry Potter author J. K. Rowling was on a crowded train from Manchester to London when the idea for Harry suddenly "fell into her head".

11. Hitler was saved from drowning by a priest when he was 4 years old. He never admitted to the near-drowning accident in later life, but a small cutting from a 1894 newspaper was found, chronicling how a boy of four was saved from drowning. This confirms the story, told by priest Max Tremmel, of how his predecessor Johann Kuehberger had rescued the terrified Hitler.

12. Koalas sleep up to 20 hours a day.



13. Leo Da Vinci could write with one hand and draw with the other at the same time.

14. Couples who are in love synchronize their heart rates after gazing into each others' eyes for three minutes.

15. Barry Manilow didn't write his song called "I write the songs".

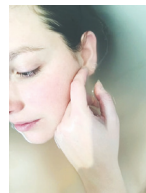
16. The Beatles used to be called Johnny and the Moondogs.

17. Late-night dancing was illegal in Japan until 2015.

18. Japan has more than 50,000 people who are over 100 years old.

19. In an average lifetime human skin completely replaces itself 900 times.

20. People with many friends live 3.7 years more than those who are isolated.



21. A person from Las Vegas is called a "Las Vegan".

22. The word "bride" comes from an old proto-germanic word meaning "to cook".

23. The tradition of exchanging wedding rings goes back to ancient Egyptian times.

24. Over 5,000 climbers have successfully reached Mount Everest's peak, including a 13-year-old, a blind person, and a 73-year-old woman.

25. During Apartheid, Glasgow renamed the street where the South African Consulate was located to "Nelson Mandela Place." Consular officials would be forced to look at his name when reading and addressing postal correspondence.

26. If we could capture just 0.1% of the ocean's kinetic energy caused by tides, we could satisfy the current global energy demand 5 times over.

27. Recycling a single plastic bottle can conserve enough energy to light a 60W bulb for up to 6 hours.



28. When the "Elephant Whisperer" Lawrence Anthony died, a herd of elephants arrived at his house to mourn him.

29. An experiment in 1998 found that a bright light shone on the backs of human knees can reset the brain's sleep-wake clock.

30. Similar to fingerprints, everyone also has a unique tongue print.





## OAKWOOD FARM MEWS

You can look forward to a warm welcome at Oakwood Farm Mews. We provide modern en-suite accommodation. We are situated on the outskirts of Chester and are conveniently located for Chester Races and the M56 link to Manchester and Liverpool & North Wales.

- Full en-suite accommodation
- 9 Spacious comfortable rooms with Free WFI
- From £50 per night
- A pet stay room at an additional £10 per night.



## Oakwood Farm Touring Park

Here at Oakwood Farm Touring Park. We provide fully serviced hard standing and grass touring pitches, and a new modern heated shower block.

- A choice of fully serviced pitches
- Free Wireless Internet
- £30 per night for caravans
- £25 per night for tents
- Café on site



Spacious pitches in idyllic settings.



Oakwood Farm Mews & Touring Park, Oakwood Farm, Parkgate Road, Chester CH1 6EY  
 W: [www.oakwoodfarmmews.co.uk](http://www.oakwoodfarmmews.co.uk) W: [www.oakwoodfarmtouringpark.co.uk](http://www.oakwoodfarmtouringpark.co.uk)  
 e: [oakwoodfarmchester.co.uk](mailto:oakwoodfarmchester.co.uk)

**Telephone: 01244 880828**

## C & N ACCOUNTS

**Contact us:**  
**07983 535 714**  
[nickcandnaccounts@yahoo.com](mailto:nickcandnaccounts@yahoo.com)  
**visit our website:**  
[www.candnaccounts.co.uk](http://www.candnaccounts.co.uk)

Free initial consultation | Easy to Understand Charges | No Accountancy Speak

## Our Services

- |                                   |                             |
|-----------------------------------|-----------------------------|
| ✓ VAT Returns                     | ✓ Payroll                   |
| ✓ Company and Business Accounts   | ✓ Financial Planning        |
| ✓ Personal Accounts               | ✓ Investment Services       |
| ✓ Management Accounts             | ✓ Business Startups         |
| ✓ Tax Returns (Private & Company) | ✓ Budgeting and Forecasting |
| ✓ Book Keeping                    | ✓ Bank Liaison              |
| ✓ Making Tax Digital              | ✓ Government Grants         |

Currently, in 2020 & 2021, assisting clients with Furlough Pay, Government Grants and Bank Loans

**Accountants covering Chester & North Wales areas**  
**For your ease, We Come To You**

**aat**



# dental solutions

We **LOVE** to make you **SMILE...**

## BESPOKE DENTURES

Natural looking dentures  
beautifully created just for you  
We believe in treating our clients  
with dignity and discretion

## IMPLANT RETAINED DENTURES

Many patients who have chosen to have  
implants, report they are happy and  
comfortable for the first time since the  
loss of their natural teeth.

## WHAT OUR CLIENTS SAY

“The moment I met Philip and his team  
I knew I was in safe hands. Everyone was  
patient, caring and professional.”

*Doreen - Wirral*



**Smile we're local**  
Junction 3 M53



**CALL US TODAY**  
**0151 678 9833**  
**PLEASE CALL US FOR**  
**A FREE CONSULTATION**

Dental Solutions Denture Clinic  
399 Upton Road Prenton Wirral, CH43 9SE  
[www.dentalsolutions.co](http://www.dentalsolutions.co)



~~Retired~~ *Inspired*

~~Lonely~~ *Community*

~~Restricted~~ *Freedom*

~~Ageing~~ *Wellbeing*

~~Old memories~~ *New memories*

~~One day~~ *Today*



When you're ready  
to **rethink retirement**  
and embrace the best  
years of your life...

...our retirement  
village is **ready**  
*for you.*

  
**Gifford Lea**  
*Inspired* in Cheshire

Visit safely today!  
Call **01829 238 793** or  
visit **[giffordlea.co.uk](http://giffordlea.co.uk)**

Ready for your *best* years?



# OUR ZOO

## What's happening at Chester Zoo.

### Vets perform sight-saving surgery on penguin at Chester Zoo



Four-year-old Munch, a Humboldt penguin at Chester Zoo, was discovered to be experiencing blindness in both of his eyes from cataracts, a disorder which creates cloudy patches on the lens which get bigger overtime.

Bird conservationists noticed the issue when Munch was having difficulty catching fish during feeding times and started bumping into other members of the zoo's colony of Humboldt penguins - a species listed by the International Union for the Conservation of Nature (IUCN) as vulnerable to extinction.

Following an assessment by the zoo's team of on-site vets, it was decided that only specialist treatment could save Munch's sight, and so animal optical care experts at Eye Vet were called in to help perform the zoo's

first ever penguin cataracts operation.

Now, just a few weeks after his surgery, experts at the zoo have reported that Munch is back with the rest of the colony and nearing a full recovery.

*The Eye vet said:*

"I've been in the veterinary field for almost 24 years and Munch is the very first penguin I've operated on – they're not regular clients that's for sure. Unfortunately, because his quality of life was impacted by the diminished sight, surgery was the only option we had available to us.

"We had seen the news about how the Covid-19 pandemic had massively impacted Chester Zoo, and this sort of surgery can certainly be costly. Eye Vet was therefore more than happy to donate both equipment and time to help out. We also approached several companies that manufacture specific items that we needed for the surgery to see if they'd kindly donate it to us and, wonderfully, they all agreed. We're really happy to report that the surgery was successful and Munch is now well on the way to making a full recovery.





**To save Chester Zoo head to: [www.chesterzoo.org/saveourzoo](http://www.chesterzoo.org/saveourzoo)**

"Like many of the staff at the zoo, our team has worked throughout the national lockdowns, so we're all feeling mentally and physically exhausted, but taking care of Munch was just the morale boost that we all needed. It's an amazing feeling knowing that we've helped save him, he's the first thing that made me smile in a long time and caring for him was definitely the best part of my year. We can't wait to visit him and the penguin colony now that the zoo has reopened."



Following his procedure, Munch spent time recovering in a shallower nursery pool while keepers monitored his post-surgery progress. During this time, he was joined by his life partner and best friend, Wurly, who kept him company throughout his recovery.

Munch really dotes on Wurly and wherever she goes, he follows, so I'm sure she provided some great comfort to him. The pair have

always been inseparable and even had their first chick, Leek, in 2019 and are even incubating eggs once again!

#### Humboldt penguin facts

- This South American penguin is named after the chilly Humboldt current, along which the penguins commonly swim
- In the wild, Humboldt penguins are vulnerable to disturbances in their food chain caused by strong El Nino currents
- Humboldt penguins are social animals, living in relatively large colonies of closely spaced burrows
- Humboldt penguins 'fly' through the water at speeds of up to 25mph
- They enjoy a diet of small fish (anchovies, herring, smelt) and crustaceans



**We're an essential service provider and open for weight loss treatments during lockdown.**

**If you'd rather drive weight down at home, you can - with free delivery to your door!**

**Our easy-to-prepare, pharmaceutical-grade diet meals are tasty, filling and effective for weight loss.**



**At around £3.20 for most meals, our diet offers a cost-effective weight loss solution. We offer a range of tasty sweet and savoury meals, snacks and drinks, making dieting easier.**

Suite 4 Dovecote Court, Stanley Grange, Ormskirk Road, Knowsley, Merseyside, L34 4AR

**Telephone: 0151 214 3211**

**www.ziba-slim.com | Email: info@zibaclinics.co.uk**



FIND US ON  
FACEBOOK,  
GOOGLE  
AND  
INSTAGRAM

# Roll Right Limited

ELECTRIC ROLLER DOORS



**Roll Right Limited**

Electric Roller Shutter Garage Doors  
01430 871161

STARTING AT £755  
(INC VAT) FULLY FITTED

ELECTRIC ROLLER SHUTTER GARAGE  
DOORS

CALL NOW FOR A FREE  
QUOTE FOR A NEW, SPACE  
SAVING ROLLER DOOR.

- \* Insulated Aluminium with weatherproof rail
- \* Inc 2Fobs & 5 Years Guarantee
- \* Over 15 Colours to Choose
- \* Full Payment on Completion
- \* Made to Measure
- \* Disposal of Your Old Door by Our Friendly, Professional Teams



CONTACT US NOW  
ON 01430 871161



WWW.ROLLRIGHTLTD.CO.UK

## ABC FASCIAS

- UPVC Fascias, Soffits and Guttering
- Specialist Fitters
- Excellent prices due to no sales staff
- Transform your home with UPVC
- Telephone for a FREE quotation

Tel: 0151 909 2993  
07902 196700

abcroofing231@gmail.com  
www.abc-roofing.co.uk

## Nathan's Tree Surgery

*NPTC Qualified*

*£5 Million Liability  
Insurance*



■ Felling

■ Pruning

■ Reducing

■ Fencing

Services

■ Dismantling

■ Hedge

Maintenance

Call:

**01948 818743**

**07534077755**

1 Woodcroft, Lacon Street,  
Prees nr. Whitchurch, Shropshire SY132EL

BE YOUR BEST SELF

# HEALIFE CBD

DEPENDABLY SWISS



SAME DAY DELIVERY SERVICE

CHESHIRE, FLINTSHIRE, WREXHAM, WIRRAL.



DISCOVER THE U.K'S BEST QUALITY CBD PRODUCTS. GROWN, HAND-PICKED  
AND MADE WITH CARE IN THE FOOTHILLS OF THE SWISS ALPS.

- FINEST QUALITY SWISS ORGANIC CBD.
- HIGH AND LOW STRENGTHS AVAILABLE.
- COMPLETE RANGE OF CBD PRODUCTS.
- INDEPENDENTLY LAB TESTED AND CERTIFIED.



All same day deliveries are delivered by an experienced member of the Healife team that will be able to answer any questions you may have.  
Please visit our website for further information.

VISIT  
**WWW.HEALIFECBD.CO.UK**



SCAN ME



# *Have you tried "Chester's Best-Kept Secret"?*

Relax in Our Botanic Boho Garden & Restaurant



BREAKFAST | BRUNCH | LUNCH | AFTERNOON TEA  
DINNER | DRINKS | COCKTAILS

THE TOWNHOUSE  
**SECRET  
GARDEN**  
CHESTER

Book via website or give us a call

**01244 567 300**

[reservations@chestertownhouse.com](mailto:reservations@chestertownhouse.com)

49-51 Lower Bridge Street, Chester CH1 1RS

[www.chestertownhouse.com](http://www.chestertownhouse.com)



# *Enjoy Sunday Lunch Like It Should Be...*

Relax in Our Botanic Boho Garden & Restaurant



FAMILY | FRIENDS | EVEN BRING THE DOG!

THE TOWNHOUSE  
**SECRET  
GARDEN**  
CHESTER

Book via website or give us a call

**01244 567 300**

[reservations@chestertownhouse.com](mailto:reservations@chestertownhouse.com)

49-51 Lower Bridge Street, Chester CH1 1RS

[www.chestertownhouse.com](http://www.chestertownhouse.com)







## Events Coming Up

### JUNE ONWARDS

ALL RACE DATES – Enjoy Pre-Race Brunch With 90 Minutes' Unlimited Prosecco (£39.95)

### JUNE/JULY

OUR SPECIAL PRE-BOOK ONLY  
EUROS 2021 – ALL UK GAMES  
IN OUR SPECIAL MARQUEE

"£50 per Head, Tables of Six  
Only – Unlimited Beer/Cider  
Bottles During the Match"

LIMITED SPACES

### AUGUST

A Very Special BRUNCH to  
Celebrate the FOOD & DRINK  
FESTIVAL WEEKEND – 28th,  
29th, 30th August



Start Your Morning With Us Before Heading to the  
Annual Food & Drink Festival at the Race Course

"A Very Local Breakfast Brunch With  
Cheshire-Based Ingredients"

£19.95 Includes a Special Full English and Mimosa



# *Celebrate in Style*



Our Main Restaurant  
up to 30 Guests

Our Undercover Heated  
Terrace – 60 Guests

Butterfly Bay Undercover  
Heated Terrace – 24 Guests

Flamingo Lounges  
up to 18 Guests



Coming Soon:  
Garden Marquee – 54 Guests

Also Possible:  
**FULL VENUE HIRE!**



THE TOWNHOUSE  
**SECRET  
GARDEN**  
CHESTER

**Book via website or give us a call**

**01244 567 300**

[reservations@chestertownhouse.com](mailto:reservations@chestertownhouse.com)

49-51 Lower Bridge Street, Chester CH1 1RS

[www.chestertownhouse.com](http://www.chestertownhouse.com)







## Considering Self-Build?

---



Est. 1981 ▶ Award Winning  
Fixed Fee ▶ With or Without Land

## Distinctive Homes

We work with a wide range of budgets, creating award-winning homes as individual as you. So, wherever you are on your self-build journey, talk to us today to realise your self-build dreams.

01829 730 244 | [cbhomes.co.uk](http://cbhomes.co.uk)

# PURE

CONSERVATORIES

CONSERVATORIES

ORANGERIES

CONSERVATORY ADAPTATIONS

Call us on:  
**01244 555032**

**BEFORE ROOF INSTALLED**



The only system  
that comes with  
planning consent.  
Call us today for a  
**FREE** quotation.

We are  
working  
safely  
during  
**COVID-19**



**Transform your conservatory  
into an all year round living space**

**NORTH WEST  
No. 1  
INSTALLER**



**AFTER ROOF INSTALLED**

*A local family run firm you can trust*



# FREE EXPERT ADVICE

# PURE

## CONSERVATORIES

HOME EXTENSIONS | GARDEN ROOMS | REPLACEMENT GLASS

**BEFORE**



**AFTER**

- A wide range of tiles and colours
- Lighting & Plastering included
- Upgrade your frames or glass
- Fully trained installation teams



[www.pureconservatories.co.uk](http://www.pureconservatories.co.uk)



# THIS MONTH'S HISTORY

This feature each month will give true interesting facts from years gone by. See what you remember that happened in your lifetime.

## THIS DAY IN HISTORY FOR THE MONTH OF JUNE



### JUNE 5th 1968

Robert F. Kennedy was shot and mortally wounded in Los Angeles. The shooting occurred after a celebration of Kennedy's victory in the California presidential primary. He died at 1:44 a.m., June 6, at age 42, leaving behind his wife Ethel and eleven children, the last one born after his death.

### JUNE 6th 1944

June 6, 1944 - D-Day, the largest amphibious landing in history, began in the early-morning hours as Allied forces landed in Normandy on the northern coast of France. Operation Overlord took months of planning and involved 1,527,000 soldiers in 47 Allied divisions along with 4,400 ships and landing craft, and 11,000 aircraft. The Germans had about 60 divisions spread along France and the Low Countries. American forces landed on two western beaches, Utah and Omaha, while British and Canadian troops landed farther east on Gold, Juno and Sword beaches. By the end of the day 150,000 Allied soldiers and their accompanying vehicles had landed with 15,000 killed and wounded.

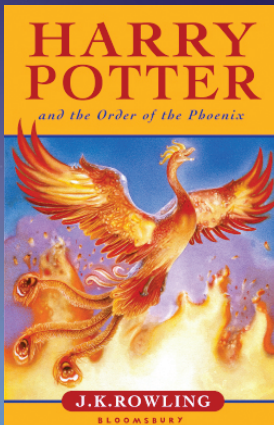


## JUNE 16 1978

The Movie Grease, starring John Travolta and Olivia Newton-John opened to the public.

When the movie was being filmed in 1977, no one knew they were making what would become the highest-grossing American movie musical of the 20th century.

Leads John Travolta and Olivia Newton-John played high school sweethearts Danny and Sandy.



## JUNE 21st 2003

JK Rowling's "Harry Potter and the Order of the Phoenix" released and became the fastest-selling book ever.

**1st** - Marilyn Monroe (1926-1962) was born in Los Angeles (as Norma Jean Mortensen). Following an unstable childhood spent in foster homes and orphanages, she landed a job as a photographer's model which led to a movie career. She later married baseball legend Joe DiMaggio. Beneath her glamorous movie star looks she was fragile and insecure and eventually succumbed to the pressures of Hollywood life. She died in Los Angeles from an overdose of sleeping pills on August 5, 1962. Best known for Gentlemen Prefer Blondes (1953), The Seven Year Itch (1955), Bus Stop (1956), Some Like It Hot (1959), and The Misfits (1961).

**10th** - Judy Garland (1922-1969) was born in Grand Rapids, Minnesota (as Frances Gumm). She is best remembered for her portrayal of Dorothy Gale in The Wizard of Oz (1939) and other films including Meet Me in St. Louis (1944) and Easter Parade (1948). She became one of the most popular concert performers of the 1950s and '60s and broke box-office records in New York City and London. She was found dead of an overdose of sleeping pills in London on June 22, 1969.



# ALLMIGHTY ROOFING

## Your Local Flat Roofing Specialists

Complete Re-Roofs/Commercial Roofing/ Facias & Guttering



### Firestone Flat Roofing System

- ✓ 20 year guarantee
- ✓ Superior durability
- ✓ Seamless sheets in one piece
- ✓ Very low life-cycle cost
- ✓ Flame-free & easy installation
- ✓ High flexibility & elongation
- ✓ Environmentally friendly



Meet the owner

- 15 Years Experience
- Level 3 Site Carpentry NVQ
- Level 1 Construction NVQ
- Level 2 Slate & Tiling NVQ
- Licensed Firestone Contractor
- Fully Insured



TRUSTMARK  
Government Endorsed Quality

Proud members of  
**Checkatrade.com**  
Where reputation matters

# Call 01244 637121

# [www.allmightyroofing.co.uk](http://www.allmightyroofing.co.uk)



OVER 20 YEARS EXPERIENCE

**NGL TARMAC AND DRIVEWAYS**  
Domestic and Commercial

- **DRIVEWAYS** • **LANDSCAPING**
- **CONCRETE** • **BLOCK PAVING**
- **TARMAC** • **RESIN BONDED GRAVEL**





Day: **07858 576719** Eve's: **01978 843398**  
[www.ngldriveways.co.uk](http://www.ngldriveways.co.uk)



**Do you see me?  
So do your clients!**

**Lets get businesses back on track. We  
have great offers for new advertisers.**

**Get in touch with us.  
Call 01244 555 244 or  
visit our website at [love-chester.com](http://love-chester.com)**

**LOVE  
CHESTER** MAGAZINE

**TARVIN LOGS**





**SEASONED LOGS - FULL OR HALF LOADS  
DUMPY BAGS OR NETS OF KINDLING**

**FREE LOCAL DELIVERY**

**07936 148566**

[www.tarvinlogs.co.uk](http://www.tarvinlogs.co.uk)

**CROSS LANES, TARVIN, CHESTER,  
CHESHIRE CH3 8HS**



**Frodsham Gates & Fencing**  
are Manufacturers of Quality  
Wooden Boundary Solutions

White Primed Free Standing  
Weddings/Events Picket Fencing

Garden Gates/Driveway Gates/  
Picket Gates & Fencing/  
Feather Edge Panels

**Fitting Service - Please Call for Free Quotation**

**DESTAL Ltd also offer an export wooden  
case/crate manufacturing and packing service**  
(Picture below is our NEW Urban Fencing)



**11 Europa Court, Dee View Boulevard,  
Chester, CH1 4NP**

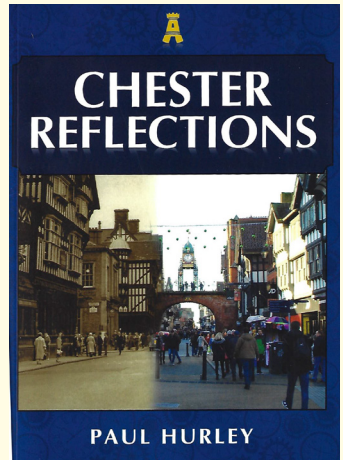
**Tel: 07725 235 747 / 07725 235 760**  
[www.frodshamgates.co.uk](http://www.frodshamgates.co.uk)  
 Email: [sales@frodshamgates.co.uk](mailto:sales@frodshamgates.co.uk)



## BOOK REVIEW:

# CHESTER REFLECTIONS by Paul Hurley

An exciting collection of historic and modern pictures that are individually merged to reveal how the area has changed over the decades. Each of the 180 pictures in this book combines a recent colour view of Chester with the matching sepia archive scene. Through the split-image effect, readers can see how streets, buildings, the docks and everyday life have transformed with the passing of time. Local author Paul Hurley presents this fascinating visual chronicle that ingeniously reflects past and present glimpses of Chester.



Paul has kindly let us reproduce some images for your enjoyment.



The Cross, 1860 and 2010

This ancient photograph is quite poor, as you would expect it to be. It depicts one of the rarest views of what is known as the Chester Cross area and shows a building in a very poor state. By 1888 it had gone and in its place was built the beautiful black and white building shown.



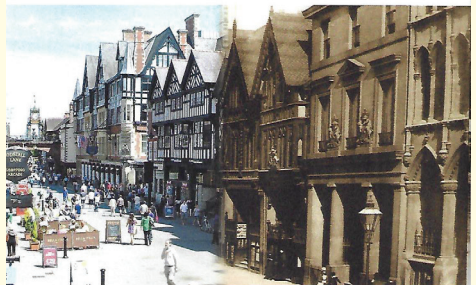
*Chester Cross 1860 & 2010*



Eastgate Street, 1897 and 2010

Here we have quite a unique photograph as it shows the famous Chester Clock, which straddles the city walls over Eastgate Street. This old photo was taken as the clock was under construction and was to celebrate Queen Victoria's Diamond Jubilee on 27 June 1897. In the photograph, only the frame is there as it awaits the fitting of the clock face.

This photograph is absolutely filled with period charm, showing horse trams and many other forms of horse-drawn transport. There have been some alterations to the buildings but in the main little has changed architecturally.



*Eastgate Street 1897 & 2010*



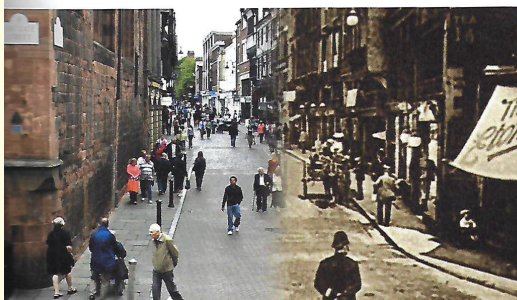
Lower Bridge Street, 1956 and 2009

The year is 1956, and everything still looks very much the same due to careful restoration. On the right is St Olav's Church. It is believed there was once a Scandinavian community in the area – hence the name. The church was founded in the eleventh century, and this building dates from 1611. In 1841 the parish was amalgamated with St Michael's, and in 1849 the church was restored by Thomas Harrison. It was declared redundant in October 1972 and has had several uses since then. The building is Grade II listed.



Northgate Street, 1908 and 2010

Aethelflaed built the ancient church at the junction with Eastgate Street and Northgate Street. St Peter's Church, seen on the left of the photographs. She was the daughter of King Alfred AD 907, so it is one of the oldest churches in the county. The policeman in the old photo has rather an easy job directing traffic!



*Lower Bridge Street 1956 & 2010  
(left)*

*This building is the image on our front cover, Now The Townhouse & The Secret Garden!*

**Available from bookstores  
£15.99**

**Also available in:  
Kindle, Kobo and iBook**

**ISBN: 9781398104280**

**Published by  
Amberley Publishing**

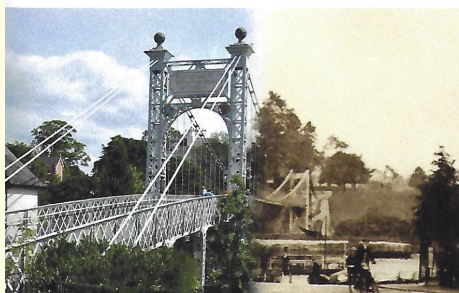
*Northgate Street, 1908 & 2010  
(below left)*

*Chester Suspension Bridge, 1920 & 2010  
(below)*



Chester Suspension Bridge, 1920 and 2010

Other look at this famous Chester landmark that is the route for pedestrians from the river to the affluent Queens Park area on the other side of the river. Two years after photograph was taken it would be demolished and the new one erected. This, in restored in 1998.





# AutoReview by Tony Yates

Keeping you motoring

## Hyundai – i20 SE Connect



I have not tested a Hyundai in a while, so I thought it was about time I tested the new i20 – a car that was on my list of top10 cars to review during 2021. The i20 for me is the ‘family car’ – the comfort blanket as to say. This is the car you will use to take your wife and children on holiday in and the car you will use for many years to come as you navigate your way through the trials of life.

### Power & efficiency

My test car was fitted with a Turbocharged 1.0 litre T-GDi 3-

cylinder petrol engine (+48v mild hybrid system) that has 100PS and 172Nm of torque – which puts it right up there with the likes of the Ford Fiesta eco edition. The i20 also has a decent 0-62 time of just over 10 seconds and a top speed of 117mph – meaning it will easily keep up in brisk traffic or manage very well on the motorway.

Remember, the i20 is not a pocket rocket. YES, it looks very

sporty with its angled lines and flashy alloys– but when all said and done, in my book - It's what I would call reserved and reliable, and let's remember, these are all the things that will make you and your family very happy indeed.

## On the road

As I said earlier – the i20 is perfect for driving the children to school, pottering around in town, or taking you and your family on a real adventure. The ride quality is not what I would have liked it to be – it's a little bit soft for me– although this is pretty much what most people want in today's world. So, soft is good.

What I will say though is that it felt amazing into the corners and the suspension dealt with most of the surfaces with ease and although the ride itself was soft – you really can throw the i20 into any corner and come out the other side with all your hair still in place and with a grin the size of Mount Rushmore.

## Design & technology

On the outside, the i20 looks elegant and well thought out from a design point of view – even with its loud Blue exterior paint job. In the past, I may have said Hyundai interiors were in my book a little bland. Well, I'm happy to report the new i20 has to report the new i20 has.



## To sum up

The i20 is a great alternative to the Ford Fiesta and is a worthy contender here because it has bags of interior space and a large boot. If you are thinking of buying one, then I would take the i20 out for a test drive before you hit the Ford showroom.

Price: from £18,595

*Where will you go?*



## Celebrate its 15th birthday!

Local children's cancer charity The Joshua Tree, celebrate their 15th year supporting families affected by childhood cancers.

The Joshua Tree was founded in 2006 by Lynda and David Hill after their son was diagnosed with leukaemia and discovered a distinct lack in support services for all family members during the traumatic experience of childhood cancer.

The charity, now based in the new purpose-built support centre in Sandiway, Cheshire, have tirelessly fundraised over the past 15 years, to not only provide the family support service for the last eight years, offering vital emotional well-being support to children affected by cancers and their families, but also to build the new purpose-built support centre to develop and enhance this service.

The Joshua Tree's new fit-for-purpose support centre has been constructed in response to the growing demand for the charity's support service from families across the North West and North Wales affected by childhood cancers.



Completed in February 2020, the charity had just moved into its new home in Sandiway, only to be forced to vacate three weeks later because of Covid 19 restrictions. 14 months on and the team celebrate their birthday back in the newly completed centre ready to welcome families.

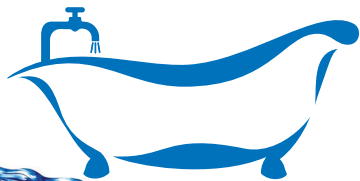
Unfortunately, due the recent pandemic the charity's major fundraising events have been cancelled, and with support costs of £4,000 a year per family, the charity needs public help more than ever to continue to support the increasing number of families affected by a childhood cancer diagnosis.

"We have finally realised the founders' original vision with the completion of the new support centre after so many years of hard work and it is looking fantastic," said Pippa Watson-Peck, Communications and Fundraising Manager.

"But with our major fundraising events cancelled we need support now more than ever to ensure we are able to continue to support families affected by childhood cancers and keep our fabulous new centre up and running."

**To get in touch with the fundraising team please email:**  
[fundariaising@thejoshuatree.org.uk](mailto:fundariaising@thejoshuatree.org.uk)  
**or call 01606 331858.**





# DISCOUNT BATHROOM CENTRE

Bespoke Bathrooms & Wet Rooms  
**Open to the Trade & Public**



**EX -DISPLAY BATHROOMS  
NO REASONABLE OFFER REFUSED!**



**WE CAN GET YOU  
BACK SHOWERING  
AGAIN IN LESS  
THAN 24 HOURS!**

**Mobility Bathrooms  
with Easy-Access  
Showers and Baths**

We provide a total solution  
to our customers' needs.

**Walk-in Showers**

All of our walk-in showers have  
special features designed to  
make your bathing safer, more  
comfortable and relaxing.

**WE WON'T  
BE BEATEN  
ON PRICE!**

## OPENING HOURS

9am - 1.30pm

Mon, Tues, Thurs, Fri, Sat.

**INTERNET PRICES ON THE HIGH STREET • MONTHLY MANAGER SPECIALS**

Image for illustration purposes only

Design | Supply | Installation

VitrA

GROHE

mira

mira  
SHOWERS

NUANCE

nuie

Hudson  
Reed

*Style without compromise*

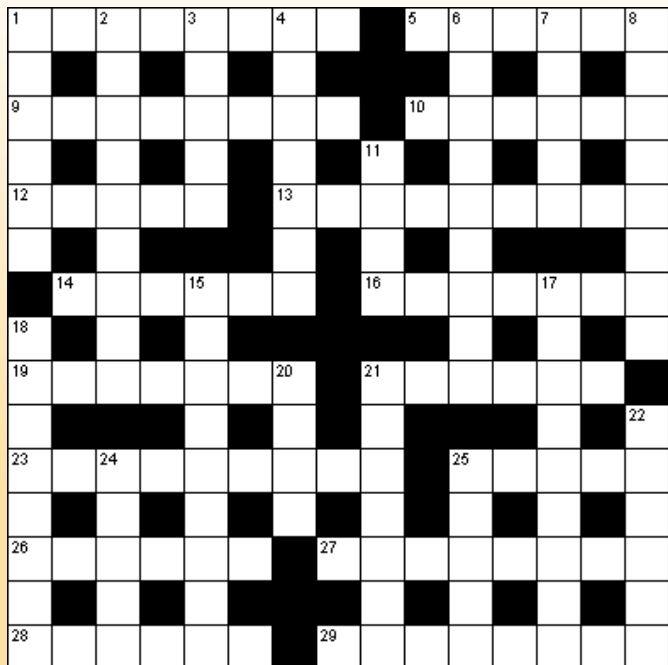
366 Hoylake Road, Wirral CH46 6DF (above Moreton Carpet Centre)

**Tel: 0151 677 6721 / 07855 015366**

Email: [info@discountbathroomcentre.co.uk](mailto:info@discountbathroomcentre.co.uk) | [www.discountbathroomcentre.co.uk](http://www.discountbathroomcentre.co.uk)

Monday-Friday: 9:00am - 4:30pm | Saturday: 9:00am - 4:00pm | Sunday: Closed

# PUZZLE CORNER



## Down

- 1 Floor beams (6)
- 2 Whining (9)
- 3 Medium to dark brown (5)
- 4 Lollipops (7)
- 6 Strength (9)
- 7 Additional (5)
- 8 Rotting (8)
- 11 Stalk (4)
- 15 Negates (9)
- 17 They rent apartments (9)
- 18 Beating (8)
- 20 Crucifix (4)
- 21 Questions (7)
- 22 Medicine man (6)
- 24 Not tight (5)
- 25 Alewife fish (5)

## Across

- 1 Happily (8)
- 5 Abroad (6)
- 9 Not moving (8)
- 10 Titillating (6)
- 12 Not our (5)
- 13 Elaborateness (9)
- 14 Goliaths (6)
- 16 Insincerely emotional (7)
- 19 Ordinary (7)
- 21 Victoria, Elizabeth and Mary (6)
- 23 City in Maryland (9)

- 25 Islamic name for God (5)
- 26 Wry (7)
- 27 Unit of mass (8)
- 28 Fatty (6)
- 29 Killer (8)

## Sudoku Puzzle

How to play:

The numbers 1 through 9 will appear once only in each row, column, and 3x3 zone.

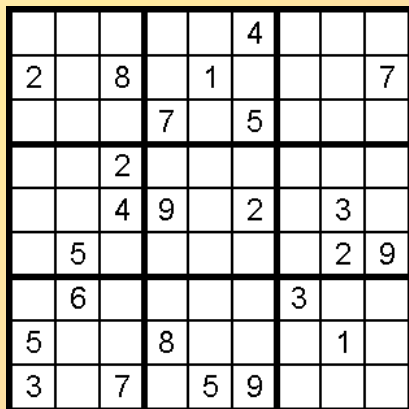
There are 9 such zones in each sudoku grid.

There is only one correct solution to each sudoku.

Good luck!

Difficulty level: Medium.

Solutions can be found on our website:





If you need advice or support then contact us now on  
**0151 306 3694** or email **ab@phoenixlegalsolicitors.co.uk**

## Housing Disrepair Claim



**PHOENIX SOLICITORS**

**Do you have problems with your rented property?**

**If so, you could claim compensation.**

**Problems can include:**

- Lack of washing or cooking facilities or a broken boiler
- Damp
- Noise
- Ventilation
- Repairs
- Drainage
- Infestations



**You can also claim compensation for injury or illness because of the above issues.**

**We offer free, no obligation advice.**

**No Win, No Fee we deduct upto 25% of your compensation\***

\*subject to terms and conditions

## Tenancy Deposit Claim



**PHOENIX SOLICITORS**

**Have you paid a deposit to your landlord for the tenancy?**

**Has your landlord failed to protect your deposit?**

**If so, then you are entitled to claim upto 3 x the value of your deposit from them in compensation.**

**We have recovered over £300,000 in compensation for our clients in the last 12 months.**

**Did you know that if your landlord has failed to protect your deposit then they are not able to obtain possession of the property using a s.21 of the Housing Act, until the deposit is protected.**

**No Win, No Fee we deduct  
upto 25% of your compensation\***

\*subject to terms and conditions



If you need advice or support then contact us now on  
**0151 306 3694** or email **ab@phoenixlegalsolicitors.co.uk**



## **A step in the right direction**

With the Covid pandemic hopefully consigned to a drawer marked 'Never to be repeated' we can do what we enjoy most – walking in hills and verdant pastures with fellow lovers of the great outdoors. Members of Chester Rambling & Hill Walking Club were active during the last year and a bit, walking locally, solo or with a partner, or even, when guidelines permitted, a small socially-distanced group. Those few occasions when walking in larger groups was permitted were enjoyed with gusto akin to flies hovering over a cowpat.

But, onwards! Our summer programme kicked off in May, and our leaders have come up trumps with a selection of walks of varying grades, heading in every direction out of Chester. On offer so far have been treks in Wrexham, Wirral, Flintshire, Denbighshire, Shropshire and further afield onto the craggy Snowdonian summits. As well as one or two walks in the neighbouring counties of Lancashire and Derbyshire, the summer promises some enticing new routes in Cheshire, an end product of leaders' lockdown rambles!





Old favourites are always popular too. The Wirral is on our doorstep and, despite the spread of industry and urbanisation across the peninsula, it's possible to enjoy a varied walk incorporating field paths, gravel tracks, heathland, woods and even beaches, with views over the Dee Estuary. May has seen some wild, wet and windy weather, but the day we did our 9-mile Heswall Dales circular walk was mostly dry and sunny. Heading in a north-westerly direction along the foreshore from Parkgate, we also incorporated sections of the Wirral Way, the charming village of Gayton, and The Dungeon, a delightful wooded dell that offered the perfect lunchtime stop. In the afternoon we reached Heswall Dales, with its undulating sandy footpaths and panoramic vistas across the estuary to North Wales. This lowland heath area is a Site of Special Scientific Interest (SSSI) and is well worth a visit for its natural beauty and views. Nearby is the more well known Thurstaston Common, which can easily be added on to any walking route this side of the Wirral – depending on how energetic you're feeling. On the day of our hike, however, we headed back from the Dales towards Parkgate along different sections of the Wirral Way and the foreshore.

Parkgate itself is a pleasant village with an interesting history and views across the Dee Marshes. It also provides a great start and end point for a walk, thanks to its free parking, and the added attractions of fish and chips and ice cream!

Now that group walking has resumed, we can't wait to step in different directions with Club members, to revisit our favourite walking areas and try out some new ones.

For the time being, members need to book with leaders if they want to take part in a Club walk. Not a member yet? Joining details, along with the early part of the summer programme can be viewed on our website:

Check our website for updates:

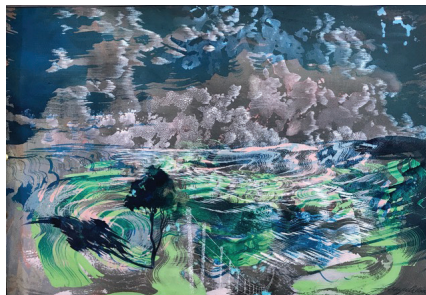
**[www.chesterwalkingclub.com](http://www.chesterwalkingclub.com)**

or take a look at our Facebook page to see what we're up to.



# PLEASE SUPPORT LOCAL CHARITIES

This page is dedicated **FREE** to all registered Charities who wish to advertise.



## **The Sicily Oak Gallery**

**Croxton Green Lane, Cholmondeley, Cheshire SY14 8HG  
is opening The British Art Portfolio Summer Exhibition  
from Friday 18th June - Sunday 27th June 2021 inclusive.  
Opening hours 10am – 6pm**

**Covid Restrictions will apply to the government guidelines.**

**Artists will include Leonie Gibbs, Annie-Rose Fiddian  
Green, Julia Trotter, Catherine Forshall, Becky Bland, Fiona  
McAlpine, Louise Risch.**

**Sculpture by Lucy Lutyens, Ceramics by Laurance Simon and  
many more very talented artists from all over Great Britain.**

**Our charity this year is 'The Rose Paterson Trust' to help  
raise funds for Mental Health projects to prevent suicide.**

**For information contact: [judybd@btinternet.com](mailto:judybd@btinternet.com)**



# LIVE FOREVER

A CELEBRATION OF MUSIC THAT WILL NEVER DIE

PRESENT

# oasis UK

THE WORLD'S NUMBER ONE TRIBUTE TO OASIS

**LIVERPOOL**  
EVENTIM OLYMPIA

**11TH SEPT**  
2021

PLUS GUESTS

**STIPE**

A TRIBUTE TO R.E.M.

**LAID**

A TRIBUTE TO JAMES

PLUS DJ

**PHIL SMITH**

OFFICIAL OASIS  
& NOEL GALLAGHER'S  
HIGH FLYING BIRDS  
TOUR DJ

TICKETS



skiddle

ticketweb

eventim<sup>★</sup>

FOR MORE INFORMATION VISIT **FACEBOOK** LIVEFOREVERLIVE





# BILLY HILL INTERIORS

## CURTAIN DESIGN STUDIO

EXCITING NEWS  
COMING  
SOON



- ♥ bespoke curtain, blinds and soft furnishings
- ♥ excellent choice of fabrics and wallpaper
- ♥ extended curtain showroom - new interiors coming soon
- ♥ still operating a free covid safe home design service
- ♥ all soft furnishings made in house

**8-12 The Rake Precinct, Bromborough, Wirral CH62 7AD**  
**[billyhillinteriors.co.uk](http://billyhillinteriors.co.uk)**

 billyhillinteriors **PHONE: 0151 334 2266** billyhillinteriors 