

LOVE CHESTER

MAGAZINE



ROTARY
MEMBERS

JUNE 2019
Issue 28

Monthly Business & Community magazine delivered in & around Chester

I'm
FREE
Pick Me Up!

ADVERTISE FROM AS LITTLE AS £25
USE OUR ADVERTISERS TO KEEP CHESHIRE BUSINESSES MOVING

www.love-chester.com  

ONCE YOU HAVE READ ME PLEASE PASS ME ON TO SOMEONE ELSE!

Call: **01244 555244** or email: **info@love-chester.com**

Call us on:
01244 555032
DURABASE
Advanced Base and Wall Systems for Conservatories

PURE
 CONSERVATORIES

CONSERVATORIES | HOME EXTENSIONS | ORANGERY

Your dream room with
 less mess and faster fitting



No need for forklift, digger or skip means less mess and waste to deal with. In addition, building with Durabase means a faster installation and a far better insulated room than seen with a traditional build.



A local family run firm you can trust

Email: sales@pureconservatories.co.uk



www.pureconservatories.co.uk



Tel: 0151 336 6925



BUILDING

We understand the importance of achieving a customers vision and needs. Every project is completed to the highest quality and customer satisfaction is imperative. We aim to give customers confidence that we will keep disruption to a minimum and always work within a safe, clean and tidy environment.

GLAZING

We are professional installers of windows, doors, bi folds and frameless glass extensions. Elliott Build & Glaze Ltd is a Fensa registered company and we are able to provide a 10 year insurance backed guarantee.

PLANNING

From first contact with the customer to completion of the project, Elliott Build & Glaze Ltd can provide all services required to meet your needs, from full architectural design to the final fitting of the flooring. We aim make this experience as enjoyable and stress free as possible.

A family run business which has been built on recommendation



CUSTOMER RECOMMENDATIONS

Farrar - Greasby

"Both Alison and I would like you to pass on our thanks and best wishes to all of those involved at Elliott Build & Glaze Ltd in this project, as they have been very attentive and professional, as well as personable, throughout the project."

Forshaw/Murray - Bebington

We are very happy with all the work and the high standard that was attained.

O'Mally - Meols

"Scott and the team certainly gave us best in class service whilst they worked on our extension, kitchen and bathrooms. They kept us informed all the way and worked around our diaries to deliver the programme on time. We highly recommend them to anyone.

www.elliottbuildandglazeltd.co.uk

Email: elliottbuildandglazeltd@live.com



Elliott Build & Glaze Ltd is a trading name of S R Elliott Build & Glaze Ltd.



WHAT'S IN THIS MONTH'S LOVE CHESTER MAGAZINE



14

What's Happening At Our Zoo



16

Holiday Destinations Naples & Barcelona



22

Gardening On Behalf Of The Bees



28

Auto Review by Tony Yates



33

Chester Rambling & Hill Walking

Love Chester

The Local Magazine for Businesses in and around Cheshire.

Community News

Do You Know?

What's Happening At Our Zoo

Holiday Destinations

Community News

Gardening On Behalf Of The Bees

Auto Review by Tony Yates

Community News

Chester Rambling & Hill Walking

Diary Dates 2019

Support Local Charities

Puzzle Corner

Support Local Charities

8

12

14

16

18

22

28

32

33

34

35

36

38



Dear Friends,

Summer is here at last! Longer days and lighter nights, lovely weather (fingers crossed), we always seem to fit much more into the day and I'm

sure you will agree, people are much happier in the sunshine.

Father's Day falls on Sunday 16th June, so now is the time to plan your gift. See our advertisers to get some inspirational ideas. Take a look at our 'What's On' guide for entertainment ideas.

Whatever you get up to, have fun and take care! Don't forget to let our advertisers know you have seen their advert in Love Chester magazine.

Each month we run many editorials, from recipes and gardening to motoring and holiday destinations, plus Charity Events and Community News to name a few!

Keep up to date with us on facebook and our new facebook group, twitter & visit us at: www.love-chester.com

Best Wishes
Maxine & Mike



Cover Photograph: The Shropshire Union Canal passes through Chester. The city is a popular place for narrow boats to moor.

Circulation of this **FREE** magazine is distributed to Chester and its surrounding villages.

Love Chester Magazine Limited Registered Office: 1st Floor 12 Church Road, Gatley, Cheadle, Cheshire, SK8 4NQ

Company Number: 10588054

"Love Chester" is produced by an independent organisation; which is not connected to any other organisation, publication or groups.

All material is copyrighted and no part of this publication may be reproduced or transmitted without the written permission of the copyright holder.

Please note that we do not endorse any products or services of any advertisers. All advertisements and their content are accepted in good faith. Responsibility for copyright and the accuracy of the information provided lies with the advertiser.

beautonic

• Waxing
• Threading
• Nails

beautonic offer a personal range of walk-in services



Beautonic offer a personal range of walk-in services, to keep your eyebrows in tip top shape. Our philosophy is to put the customer first, and offer a first class service, to create brilliant eyebrows, the focal point of our facial expression, using the threading technique.

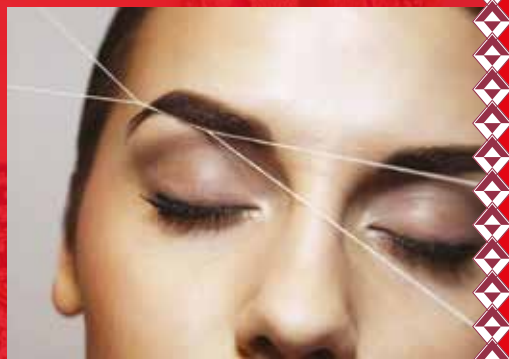
- Threading
- Tinting
- Waxing
- Lash Extensions
- Manicure
- Gel Nail
- Massage
- Henna



 **beautonicchester**

Opening Times

Mon - Sat 10:00am - 5:15pm
Sunday 11:00am - 4:00pm



10 The Forum Shopping Centre, Northgate Street, Chester CH1 2BY
Telephone: 01244 630370 or 07870 139700
www.beautonicbeauty.co.uk info@beautonicbeauty.co.uk

Indian Cookery Lessons

Learn to make your own authentic Indian meal, fresh and delicious, full of flavours

**LEARN OR GIFT SOMEONE
A WONDERFUL LIFE SKILL**

Book NOW for day courses
Please enquire for further
dates in 2019

Sat 25 May, 10am-4pm
Sat 22 June, 10am-4pm
Sat 29 June, 10am-4pm

Vegetarian classes also held.



Contact: **SOMA:**
07770752053 or 0151-334 9352

C R HOME SERVICES

Providing A Range of Home Services

- ◆ Grass Cutting ◆ Long Overgrown Grass Strimmed & Cut ◆ Lawns Mowed
- ◆ General Home Cleaning ◆ Bathrooms ◆ WC's
- ◆ Vacuuming & Polishing ◆ Dog Walking
- ◆ Personal Shopping ◆ Basic Home Maintenance
- ◆ Singular Jobs & Regular work undertaken
- ◆ Trustworthy and Reliable

◆◆ **FREE ESTIMATES** ◆◆



◆ Insured ◆ DBS Checked
Call Rick NOW to find out more:

07503 769681

Email: crofhomeservices19@gmail.com



OVER 20 YEARS EXPERIENCE

NGL TARMAC AND DRIVEWAYS
Domestic and Commercial

- **DRIVEWAYS** ● **LANDSCAPING**
- **CONCRETE** ● **BLOCK PAVING**
- **TARMAC** ● **RESIN BONDED GRAVEL**



Day: 07858 576719 Eve's: 01978 843398

www.ngl driveways.co.uk



**DO YOU REQUIRE HELP
IN YOUR GARDENS?**

**Garden services
include:**

- All Groundwork Undertaken
- Grass Cutting
- Pruning
- Hedge Cutting
- Turf Laying
- Border Work
- Grass Scarifying
- Garden Maintenance

**CALL
TODAY
FOR A FREE
QUOTATION!**
Excellent rates



Grass
Scarifying

S.G. Darlington Garden Services

Call: 01829 752042

07879 33 94 74



We provide a complete range of electrical services for homes, offices, schools, shops and other commercial premises.

Our Services include:

- From Fitting Extra Sockets to Complete Rewires
- Led Lighting upgrades
- Indoor and outdoor lighting installations and repairs
- CCTV, Door Entry systems and Intruder Alarms
- Emergency lighting installation and testing
- Office upgrades
- Full System Design, Compliance checks and Certification

Your Local Electrical Specialists

Call on our experts today for a free quote and advice

01244 621871

www.titanpsltd.co.uk

LPW PLUMBING SERVICES

Your Local Emergency Plumber

- 24 HOUR PLUMBING
- ALL GENERAL PLUMBING REPAIRS UNDERTAKEN
- PLUMBING MAINTENANCE
- ALL BLOCKAGES
- BATHROOM DESIGN & INSTALLATION
- ALL WORK FULLY INSURED

WIAPS - Water Industry Approved Plumbing Scheme

24hr 07738 462315

www.lpwplumbingservices.co.uk

info@lpwplumbingservices.co.uk



- Regular Cleaning
- One Off Cleans
- Housekeeping Services
- Tenancy Pre & Post
- House Moves
- Commercial Cleaning
- Carpet Cleaning
- Ironing Service

Contact Us

01244 350700

01829 730969

Email: info@mollymop.co.uk



COMMUNITY NEWS

Have Your Say - Tell Us & We'll Print It!

Email us @: info@love-chester.com



A charity which supports people diagnosed with the fastest growing disability in the world has spoken of its 'honour' at being included in this year's Parliamentary Review.

Cheshire Autism Practical Support (ChAPS), whose office is based in Runcorn, supports people on the autism spectrum and their families, and has made rapid strides since being formed by Managing Director Jo Garner as a parent group back in 2010.

Aside with providing a range of activities across many parts of Cheshire, ChAPS also achieved widespread recognition via the introduction of an Attention Card, to be carried by people on the Autism spectrum to alert others to their condition in the event of a difficult situation or emergency.

Now it has been selected to highlight 'best practice' in the Parliamentary Review, an independent publication which includes contributions from the worlds of business, education and politics, including a foreword from Prime Minister Theresa May.

In the publication Jo explains how the goal of ChAPS is to inspire families to achieve more through a range of collaborative activities and

services across the region, and also calls on central government to increase funding for autism and specialist services.

She says: "We recognise what an honour it is to have been chosen to 'highlight best practice' in The Parliamentary Review this year, and we couldn't be more delighted to have taken part.

"Hopefully our comments around central government needing to increase funding for autism and specialist services will be acted upon and help the local authorities and health trusts to obtain the necessary funds they desperately need for the fastest growing disability in the world.

"Taking our ground-roots small charity to the national view has been an extraordinary experience, and we are extremely grateful."



Joanne Thomas, Chair of the Trustees of ChAPS, and Jo Garner, Managing Director.



rockwoodpaving

An alternative to block paving, asphalt, or tarmac.

Your new permeable resin drive can be designed to suit your requirements and colour scheme.

Specialist in resin driveways, paving, groundworks & more...



GROUNDWORKS

TARMAC DRIVEWAYS

RESIN DRIVEWAYS

DRIVEWAYS



Environmentally Friendly

Reduced Flood Risk

Choice of Colours

Firm Surface

Attractive Finish

Easy Maintenance

Resin bound paving fixes together small stones with high-tech resin to form a firm, attractive surface. It creates many small gaps allowing water to drain through.

Get in touch for a quote today...



Telephone: 01978 508610

www.rockwoodpaving.com | contact@rockwoodpaving.com

Kingdom Heating

All your domestic plumbing requirements: GAS, OIL, LPG

We will install, service and repair all Gas, LPG & Oil boilers!

All your domestic plumbing needs.

All delivered with a Kingdom difference.

BAXI

iphe
INTEGRATED PLUMBING HEATING & ENGINEERING

ATAG
HEATING TECHNOLOGY

ATAG
10
YEAR
WARRANTY

Boilers - Servicing, Repairing & Installation ■ Domestic Plumbing ■ Bathrooms Installation & Maintenance



Telephone: 07899 921071

www.kingdomheating.org

e:contact@kingdomheating.org



ICare Meals on Wheels

VISIT OUR WEBSITE TO ORDER YOUR MEALS ONLINE



- Hot Lunchtime meal service, meal plated up if needed.
- Tea time Treat, which is a sandwich pack delivered with your hot meal ready for tea time.
- Frozen Meal delivery service.
- Home Shopping service.
- Wellbeing Check.

All staff fully police and DBS checked.

See website for full details of all services
icarecuisine.co.uk



Place an order online to be entered into our Monthly prize draw

Try a complimentary Hot Lunchtime meal and sweet delivered to your home.

Call 0845 6041125 | www.icarecuisine.co.uk

cheshire joinery *services ltd*

Bespoke hardwood windows and doors



Join us for a workshop tour and have a bag of briquettes on us!!

**SUMMER
OFFER!**

Hardwood Fire Briquettes
10KG Bag £5
10 Bags for £30
20 Bags for £40

Unit 1b, Barrowmore Estate, Gt Barrow, CH3 7JA
www.cheshirejoineryservices.com
info@cheshirejoineryservices.com
Tel: 01829 741751

DO YOU KNOW?

1. The man who invented pop-up ads has apologized to the world for creating one of the Internet's most hated forms of advertising.
2. Left-handed people process multiple stimuli faster than righties.
3. "Hello" didn't become a greeting until the telephone arrived.
4. A homeless man held up and robbed a bank in Portland for \$1, then sat down and waited for police to arrest him so he could receive healthcare in prison.
5. The smell of freshly-cut grass is actually a plant distress call due to trauma.
6. Sea otters have skin pockets where they keep their favorite rocks to use for crushing seashells.
7. The acceptance rate for NASA's astronaut applications in 2015 was .08%.
8. In 1891, Juan Vucetich, an Argentine Police Official, made the first criminal fingerprint identification.
9. Marilyn Monroe was a size 12 in the 60s, but would now be a size 6, as women's clothing measurements have changed a lot since.
10. Actor Vin Diesel has never met his father, and doesn't know what race he is.
11. Ants can survive in a microwave: they are small enough to dodge the rays.
12. We lose over a pound of weight during sleep by exhaling.
13. Queen, Bob Marley, Jimi Hendrix and Tupac never won a Grammy, while Milli Vanilli and Justin Bieber did.
14. Some holocaust survivors died of chocolate and candy overdose within their first week of freedom.
15. Bill Gates changed his school's programme codes so he was placed in class with mostly female students.
16. At 456 feet high, the world's largest door is taller than the Statue of Liberty and owned by NASA.
17. The Hollywood sign was changed by a prankster in 1976 to read "Hollyweed", after the passage of a state law decriminalising marijuana.
18. You could cover the Great Wall of China 8 times with the number of jars of Nutella sold in a year.
19. Dinosaur feathers aren't just visually apparent in fossils, but have actually been found preserved in amber.



20. George Washington penned somewhere between 18,000 and 20,000 letters in his lifetime.
21. The tallest known dog, as of 2010, was a Great Dane who measured 1.092 m (43 in) tall.



22. Elvis Presley had never received formal music training or learned to read music. He played by ear.
23. NASA's Internet connection is 13,000 times faster than The average U.S. user, at 91 gigabits per second.
24. Eminem would spend hours studying the dictionary, so he could expand his vocabulary for his rhymes.
25. Airplane turbulence caused 3 deaths between 1980 and 2009.
26. Jessica Cox became the world's first licensed armless pilot in 2008.
27. The U.S. threatened to attack Afghanistan two months before 9/11.
28. Portuguese, not Spanish, is the most widely spoken language in South America.
29. Texas has at least 200 ghost towns.
30. "Aerogel" is the lightest solid material in the world. A silicon-based solid with a porous, 99% of its volume is empty space.



31. When penguin mothers lose a chick, they sometimes attempt to "steal" another mother's chick.
32. Lionesses find lions with darker manes more attractive.
33. The smallest thing ever photographed is the shadow of an atom.
34. The iconic "Do you know where you are?! You're in the Jungle Baby!" line was actually yelled at Axl Rose by a Homeless man in New York.
35. 1 in 50,000 penguins are born with brown rather than black plumage.
36. There's an experimental township in India founded in 1968 and called Auroville, where citizens are from all over the world and there's no money or religion.
37. Mercury's New Year occurs every 88 Earth days.
38. There's an experimental township in India founded in 1968 and called Auroville, where citizens are from all over the world and there's no money or religion.
39. It took approximately 1500 years to build Stonehenge.



Elmscot Group

Day Nurseries, Nursery Schools and Kids Collective Clubs

Nurturing Inquisitive Minds

Our award-winning childcare is now in **CHESTER**.

Register for a nursery place with us today to receive

**Free Registration and
50% off first month's fees!**

To find out more and to request a prospectus,
please call **01244 346 456** or visit our website.



ElmscotGrp

www.elmscot.co.uk/chester

Elmscot_Group

BROWSERS EMPORIUM

www.browsersemporium.com

It's an Aladdins Cave of Treasures

You name it and we've probably got it!



All types of new & second-hand furniture & fittings to browse under one roof!

From bulbs to lights, door handles to doors & stools to tables!



Hooton Works, Hooton, Wirral (Junction 5 - M53) off A41 to Chester Next to Corfe's)

Tel: 0151 328 1467

Open: Mon-Sat from 10.00am

Sunday 10:30am - 3:30pm



All credit cards accepted



OUR ZOO

What's
happening
at Chester Zoo.

SIX rare baby lemurs born at Chester Zoo



- Adorable rare lemur babies from Madagascar spotted piggybacking on their mums
- New arrivals include two sets of endangered ring-tailed lemur TWINS and the zoo's FIRST baby black lemur – a species vulnerable to extinction in the wild
- Baby primates were born in zoo's new Madagascar habitat, where visitors can walk with lemurs
- 6,000 square metre area recreates world's most diverse island, Madagascar
- New zone will help visitors discover zoo's global conservation work

Hold on tight! The first ring-tailed lemurs born in Chester Zoo's new Madagascar zone cling onto their mums

Six rare lemurs have been born at Chester Zoo. Five endangered ring-tailed lemur babies - including two sets of twins - and the zoo's first ever baby black



OUR LATEST NEWS & EVENTS

lemur, a species which is vulnerable to extinction in the wild in Madagascar, are the latest arrivals being celebrated by conservationists at the zoo.

The babies were all less than 15 centimetres tall at birth and each no heavier than a tennis ball.

Primate experts say they enter the world as 'miniature adults' with all of their fur markings developed. However, it will be some time before zookeepers are able to determine whether the new arrivals are boys or girls, as the babies travel around piggybacking on their mothers.

The lemurs of Madagascar are the planet's highest primate conservation priority, as habitat loss in the wild pushes multiple species to the brink of extinction.

The important births follow the creation of a major new 6,000 square metre Madagascar zone at the zoo, recreating the dry forest habitat experienced by lemurs in the wild.

More than 1,100 shrubs, 50 trees and 360 different grasses – predominantly dry forest plants with small leaves, silvery foliage and spines – have been specially grown and planted by the zoo's botany and horticulture experts.

The environment has been created to provide world-class habitats for the animals living there, while also creating a true-to-life experience for nature lovers.

The ring-tailed lemurs live side-by-side with a group of critically endangered red ruffed lemurs in the zoo's first ever walk-through primate habitat.

Also being cared for in the huge new habitats are four crowned lemurs, another species that is endangered in the wild.

Dr Nick Davis, Chester Zoo's Deputy Curator of Mammals, said:

"Madagascar is a truly inspirational place; home to incredible, unique wildlife that cannot be found anywhere else on the planet. Yet we can report first-hand that we are on the brink of losing many of these species forever. Conserving Madagascar's lemurs is urgent and critical. That's why any birth is important, but to have six rare baby lemurs born within weeks of

each other is great news for the breeding programme. "The newborns are clinging tight to their mums right now; it's a real family affair. They grow up quickly though. Within a few weeks, the little ones will start to climb on their own, eat solid foods and gain some independence. It's going to be a magical spring and summer period watching their development."

Chester Zoo's conservationists have been fighting to protect habitats and species in Madagascar for nearly ten years.

Madagascar has already lost up to 90% of its forests - which means that many species living in these environments are now on the brink of extinction.

The zoo team has been working with field partners Madagasikara Voakajy in the country's Mangabe New Protected Area, in a bid to save this paradise and the unique range of animals that live in it.

Chester Zoo's field programmes experts in Madagascar have also worked in partnership with adventure clothing specialists Craghoppers, who have joined the zoo's mission to prevent extinction and helped with crucial monitoring of lemur populations.

The large-scale new Chester Zoo development is part of a campaign by the conservation and education charity to raise awareness of the threats faced by wildlife.



HOLIDAY DESTINATIONS

NAPLES

WITH BARCELONA STAY



Romantic Naples, just two hours south of Rome, is the largest city in southern Italy. It has some of the world's best opera houses and theatres, and is often called an open-air museum, because of its many historic statues and monuments. Join families on promenade as the sun sets on the Bay of Naples. View finds from Pompeii and Herculaneum, destroyed by Mount Vesuvius in A.D. 79, at the Museo Archeologico Nazionale or revel in the art and architecture of Museo Cappella Sansevero, built in the late 1500s.

Visiting a city such as Naples means, of course, a diverse schedule of sightseeing; exploring its museums, art galleries, and nicest streets for strolling. While a week would do this phenomenal city more justice, one day is still enough to get lost in the alleys of its Spanish quarters (and observe the genuine life of the Neapolitans), enjoy a fantastic pizza, and relax in a prestigious coffee spot such as Gambrius. Be prepared to get up very early and put on your running shoes!

Naples has very good public transportation and lots of traffic problems so it's best to avoid having a car. The city has a large but crowded bus network, trams, a subway, funiculars, and a suburban train line, the Ferrovia Circumvesuviana, that will get you to Herculaneum, Pompeii, and Sorrento.

Pizza, one of Italy's most famous foods, originated in Naples and pizza is taken very seriously here. You'll find lots of great pizza places

but be sure you look for one with a wood-burning oven!

Eggplant Parmesan originated in Naples and spaghetti also became popular in Naples, try it with clams or mussels. Seafood is abundant and very good in Naples.

Naples gets quite hot in summer so spring and fall are probably the best times to visit. Since Naples is near the coast, it's more temperate in winter than interior cities of Italy.

As you are only in Naples for 1 whole day from the ship, enjoy the other great places such as your stay in Barcelona.

See the best of Barcelona on a private sightseeing tour, which offers a comprehensive view of this exquisite Catalan city and includes skip-the-line access at La Sagrada Familia, a popular attraction that often has long lines. Perfect for first-time visitors, the tour will show you the city's most iconic sights and allow you to discover some of Barcelona's best-kept secrets. You'll also visit the hill of Montjuïc and the Gothic Quarter, and you can upgrade to the full-day tour to include visits to Park Guell and La Pedrera. Accompanied by your own private guide, you'll enjoy personalized attention on this special private tour.

Barcelona's architectural treasures span 2000-plus years. Towering temple columns, ancient city walls and subterranean stone corridors provide a window into Roman-era Barcino. Fast forward a thousand years to the Middle Ages by taking a stroll through the shadowy lanes

of the Gothic quarter, past tranquil plazas and soaring 14th-century cathedrals. In other parts of town bloom the sculptural masterpieces of Modernisme, a mix of ingenious and whimsical creations by Gaudí and his Catalan architectural contemporaries. Barcelona has also long inspired artists, including Salvador Dalí, Pablo Picasso and Joan Miró, whose works are in bold display in the city's myriad museums.

Barcelona is an enchanting seaside city with boundless culture, fabled architecture, and a world-class drinking and dining scene.

BARCELONA



If you would like to visit NAPLES, with a Barcelona stay then visit WWW.CRUISEINATION.COM

Visiting:-
BARCELONA, MARSEILLE, SAVONA,
NAPLES, PALERMO, VALENCE AND
THEN BARCELONA.

Cruise Ship: Costa Magica
Cruise Line: COSTA
Start Date: 15th NOVEMBER 2019
FREE STAY & FLIGHTS INCLUDED
Duration: 7 Nights
ONLY: **£331.00**

REPUTATION BUILT ON RECOMMENDATION



GLAN GWNA
COUNTRY HOLIDAY PARK
CAERNARFON, NORTH WALES



Secluded in a wooded valley, only two miles from the Royal Town of Caernarfon lies the exquisite family run country park Glan Gwna. Set in over 100 acres of woodland and parkland grounds, Glan Gwna offers you the perfect 'get away' location.

New and Pre-owned Holiday Homes For Sale

01286 67 3456

www.glangwna.com

GLAN GWNA COUNTRY HOLIDAY PARK
CAEATHRO | CAERNARFON | GWYNEDD | LL55 2SG | NORTH WALES
sales@glangwna.com



COMMUNITY NEWS

Have Your Say - Tell Us & We'll Print It!
Email us @: info@love-chester.com



Tarvin Summer Village Fete

The Tarvin Summer Village Fete will take place on Saturday 15th June this year from 12-5pm on the King George's Playing Fields and Tarvin Community Centre

There will be lots to see and do to keep the family entertained including a fairground, go karts, music and dance displays, dog show, wellie throwing and tug of war to name a few. There will also be a variety of stalls to visit.



Come along and enjoy the fun!



ChAPS expand into Warrington

A charity which works to support people with autism and their families has extended their services into Warrington with a variety of activities on offer in the community.

Cheshire Autism Practical Support (ChAPS) already supports people of all ages across different parts of Cheshire, and, with thanks to a confidential donation, has now been able to branch out into Warrington. "We are delighted that our ChAPS activities are now officially up and running in Warrington, and Manager Julie Gerke has been overwhelmed by the warm welcome from existing service providers," says ChAPS Managing Director Jo Garner.

"We are very much looking forward to working in partnership for the benefit of all of our families, and would love to support as many people as possible across Warrington."

Activities up and running include a play session at Warrington Sensory Centre on the first Wednesday of the month (4pm-6pm) and Street Dance at Stage Pro Academy on the first and third Mondays of the month (5pm-6pm).

Bowling takes place at the Tenpin Centre on the second Monday of the month (5pm-6.30pm) and multi-sports and family swim at Lymm Leisure Centre on the fourth Sunday of the month from 12.15pm-2.30pm.

A parents' meeting will also take place on the second Friday of each month at the Walton Lea Project Café from 10am-noon.

Julie is also finalising details to run a fortnightly Kidz Club at the Warrington Sensory Centre and Youth Club at Daresbury Village Hall. Other activities which could follow include go karting, horse riding, animal therapy and climbing, as well as extending the current training and therapies for both adults and children which take place on a rotational basis in Runcorn, Ellesmere Port and Northwich.

Autism remains the fastest growing condition in the world, affecting one person in 36, and ChAPS has already benefitted thousands of people of all ages who are on the autism spectrum.

Anyone wishing to find out more about ChAPS membership should visit www.cheshireautism.org.uk to register online. For help completing the application, please call 0344 850 8607.





Solid Sheds

Strong builds, lasting results

Gordale Garden Centre
Chester High Road
Neston
CH64 8TF
Tel: **01695 51442**

**Sheds, Workshops, Wendy Houses, Summerhouses, Garden Rooms,
Hobby Rooms, Gyms, Home Offices & Businesses and much much more...**



New branch
opening offer...
10% off
everything on
production of
this advert

Massive display of 40 buildings in Gordale Garden Centre

**Free 100% Pressure Treatment, Delivery
and Erection**

Up to 48 months low-cost finance available

solidsheds.com

Transform your body & your life

Sue Liddle

Weight Loss Without Surgery

Russell Walker

Weight Loss Without Surgery



with only
35
weeks
of treatment!

**Sue lost 3st 4lbs
in 18 weeks!**

Start weight 13st 12bs
Finish weight 10st 8lbs

**Russell lost 5st 1lb
in 17 weeks!**

Start weight 19st 5lbs
Finish weight 14st 4lbs



Alevere Therapy

Non-surgical weight loss aesthetic treatment.
Feel great about **YOUR** body.

Combining Ultrasound & Body Contouring Treatments & Diet.

Claim Your FREE Weight Loss Consultation - call 0151 214 3211

Ziba CLINICS
LIVERPOOL

Slimming, Weight Loss, Bum Lift,
Body Sculpt, Cellulite, Bing Wings,
Non-surgical Lifts, Belly Fat,
Body Composition Analysis, Alevere Therapy,
Relax on the therapy bed
and let us treat your body fat

www.ziba-slim.com

Alevere Liverpool 0151 214 3211

20 Suite 4 Dovecote Court, Stanley Grange, Ormskirk Road, Knowsley, Merseyside, L34 4AR.



Cheshire Damp Proofing

Preservation Specialists



Conservatory Roof Conversion Specialists

A ROOM TO ENJOY ALL YEAR ROUND



Welcome to Cheshire Damp we are a small family run business based in Cheshire.

Benefits

- Warm in Winter
- Cool in Summer
- Low maintenance
- Excellent build quality
- Internal lighting choices
- Lighting options
- Reduced noise from rain, hail and traffic
- Added value
- Insurance backed 10 year guarantee



TAPCO Colours



CALL US TODAY
For a no obligation quotation!

We will give you the best quote possible on a Roof Conversion.

E: info@cheshiredamp.com



Tel: 01244 752 181 / 0151 676 2898 www.cheshiredamp.com

BEE VIGILANT!

How to Garden on Behalf of the Bees

With the global decline of bees, it has never been more important to support the pollinator population in your garden. This spring make sure you fill your garden with as many pollen-rich plants as you can to give our bees a fighting chance, as they are vital components of our biodiversity.

The Royal Horticultural Society reports Britain as having 25 species of bumblebees, of which about 11 commonly visit garden flowers. They also state that there are about 260 species of solitary bee in Britain, all of which have been in decline in the last 50 years for a variety of reasons.



Nectar and Pollen

Flowers attract insects by providing them with two rich sources of food: nectar and pollen. Nectar provides insects with an energy source as it contains sugar, while pollen grains contain proteins and oils. It's also a good idea to have at least two nectar or pollen-rich plants in flower at any one time during this period. The nectar feeds the adult bee, while the pollen is collected to feed their larvae. It is vital that gardeners provide flowers throughout the bee's life-cycle, from March to September.

Bumblebees

Different bumblebee species have tongues of differing lengths and so prefer different flowers. The longest-tongued species, *Bombus hortorum*, prefer deep flowers such as honeysuckle, foxgloves and aquilegia.

There are six plant families bumblebees are particularly attracted to, but they will also appeal to other pollinators such as honeybees and butterflies. These include Boraginaceae (the wildflower comfrey, which makes a potassium-rich compost), and Fabaceae (peas),

Viper's bugloss (*Echium vulgare*) is perhaps the best single plant to attract bumblebees to a garden, and attracts both short and long-tongued varieties. Planting just one or two of these will attract many bees. It has beautiful blue flowers two feet tall, and blooms from June to August, making a good herbaceous border.

Preferred Flowers

The rose family, especially hawthorn and potentilla, seems to be irresistible to bees, as are fennel, angelica, cow parsley and sedum flowers. Tubular-shaped flowers, such as snapdragons and heathers, are also all favourite feeding grounds for bees.

Spring flowers attracting bees include bluebell, bugle, crab apple, daffodil, flowering cherry and currant, forget-me-not, hellebore, pulmonaria, pussy willow, rhododendron, rosemary, viburnum and thrift.

To tempt the bees in early summer plant aquilegia, astilbe, campanula, everlasting sweet pea, fennel, geranium, potentilla, stachys, teasel, thyme and verbasicum.

Late summer flowers attracting bees include angelica, aster, buddleia, cardoon, cornflower, dahlia (single-flowered), delphinium, eryngium, fuchsia, globe thistle, ivy, lavender, penstemon, scabious and sedum.

Make Your Garden a Home for Bees

One of the best ways to encourage bees in your garden is to keep your own bees with a hive, or allow a beekeeper to place hives in your garden. You could also add a bumblebee box to your garden. Nest boxes containing cardboard tubes or hollow plant stems, or holes drilled in blocks of wood, ranging from two to eight millimetres wide, will provide nest sites for some species of solitary bees.

The more flowers you plant, the more varieties of bees you will attract into your garden, and the more flowers and vegetables will be pollinated. This is particularly important for fruit and vegetable growers as apples, plums, pears, cherries, raspberries, blackberries, blackcurrants, red currants, gooseberries and strawberries, broad beans, runner beans and some members of the marrow-pumpkin family all rely on insects to bring about pollination. Be conscious that you should never use pesticides on plants while they are in flower, as this will harm bees.





Frodsham Gates and Fencing Direct



Custom Made, Quality White Primed Picket Fencing
Driveway Gates, Child-Friendly Fencing, Decking
Feather Edge Fence Panels, Premium Side Gates
Budget Range & Events/Freestanding White
Picket Fencing

Internal Cottage Doors
Bespoke Fitting Service

PLEASE CALL FOR A FREE NO OBLIGATION QUOTATION

Unit 15, Brook Works, 38 Main Street, Frodsham WA6 7AX

Tel: 01928 890030

M: 07725 235 760

www.frodshamgates.co.uk

Email: sales@frodshamgates.co.uk



HENRY JAMES DAVIES



01829 250 015



07703 855 509



henryjamesdavies@gmail.com



HJD Garden Maintenance & Landscaping

GARDEN / GROUND MAINTENANCE

- Rear Rolled Push Mowing
- Ride on Mowing
- Strimming / Edging
- Weeding / Pruning
- Hedge Cutting
- Lawn Treatment
- Knapsack Herbicide
- Spraying (weed control)

LANDSCAPING

- Fencing
- Patio / Pointing
- Decking
- Garden Walls
- Ponds
- Turf / Seeding
- New & Repair
- Digger / Driver

All Scales of Work & Other Related Jobs Catered For
Weekly, Fortnightly, Monthly & One Off Jobs



Fencing
Gates
Sheds & Log Stores
Decking
Paths & Patios

Justfencing

C H E S H I R E

Installers of quality timber fencing

FREE NO OBLIGATION QUOTES

0151 336 7598 / 01244 470 120 / 07957 349 244

www.justfencingcheshire.co.uk



LANDSCAPE

NORTH WEST

ONE OF THE UK'S LEADING SUPPLIERS OF NATURAL

EVERYTHING YOU NEED IN

**INDIAN SANDSTONE | GRANITE | PORCELAIN
BLOCK PAVING | FENCING | SANDS
DECORATIVE AGGREGATES | TOPSOIL
WATER FEATURES | EDGING AND WALLING
ARTIFICIAL GRASS | SOLID FUELS**



Calibrated Grey Sandstone



Calibrated Beige Sandstone



Calibrated Green Sandstone



Silver Grey Granite Paving



Blue Grey Granite Paving



Yellow Granite Paving



Pink Granite Paving



Black Basalt Paving

WIRRAL DEPOT

RURAL STONE & HARD LANDSCAPING PRODUCTS

ONE PLACE THIS SUMMER!

COME AND SEE OUR SHOWROOM



Golden Flint Gravel



Staffordshire Pink Gravel



Blue Slate Chippings



Red Felsite



Crusher Run



Top Soil



Grit Sand



Red Sand



WWW.CORFESTONE.COM



0151 327 5555

OPENING HOURS

MONDAY - FRIDAY 7:30AM - 5PM
AND SATURDAY 8AM - 3PM



LHL GARDEN SERVICES

Over 30 Years Experience in Professional Gardening & Landscaping

Gardens are there for a reason. A beautiful garden adds calmness, creates clear thinking, gives a sense of harmony and well-being and above all - **SHOWS YOU CARE!**



Unwanted dead leaves removed



We give 100% all of the time!

- QUALITY WORK
- ATTENTION TO DETAIL
- CRISP EDGES
- STRAIGHT HEDGES
- STRIPED LAWNS
- GARDENS TO BE PROUD OF !



- HOME MAINTENANCE
- PUBLIC HOUSES
- RESTAURANTS
- APARTMENTS
- SHOWROOMS
- NURSING HOMES
- CHURCHES
- HOTELS
- ... and much more!



Pressure washing for the finishing touch!



Serious about Gardening!

Call Lee on 07425 159788

View our work on   

Local Trustworthy Experienced Landscape Gardener

Lawns | Fencing | Patios | Hedges | Planting | Clearance



Keeping the roof
over your head™

Covering Cheshire, Merseyside, Wirral & Surrounding Areas

- House Roof Renewals
- Roof Re-Slates
- Firestone EPDM Rubber Flat Roofs
- Flat To Pitched Roof Conversions
- Fascia, Soffit, & Gutter Renewal

Please Contact Us For A Free Quote

 **08006344821**  **@robmcroof**

 **07960397021**  **info@rm-roofing.co.uk**

With a reliable, friendly and hard working team we can guarantee you a high standard of work with a very professional service. Our customer satisfaction rate is outstanding and we aim to keep those standards high. For photos of our work, reviews and more please visit our Facebook Page

All Work Comes With A 10 Year Guarantee



Volvo XC60 D4 AWD Momentum (Manual)



I am not sure how many of you have ever driven a Volvo – but let me tell you this; once you have, you will never drive anything else that feels even remotely close. So, why does a Volvo make you feel this way? Well, to be honest, I have no idea – all I can tell you is that every time I go out for a drive in a Volvo, I seem to be a better driver, and if I'm being honest, more courteous, more relaxed, and dare I say it – more like a human being and not a robot when out on the open road.

This, of course, gives me the starting block on how the XC60 fared when I took 'her' out for a spin to Norfolk.

I don't know much about Norfolk, apart from it has lovely beaches and some lovely roads. If I was you, I would go for a day out – but remember you will need a Volvo if you really want to experience the real driving pleasure of the XC60.

Power and Efficiency:

The XC60 I had on test was fitted with a 190hp four-cylinder 1,969cc diesel engine with 400Nm of torque at 1750rpm. 0-60 is dealt with in around 8.3sec (manual) and will max out at 127mph. I like this engine a lot because it's very refined and does the job of getting you around at a decent pace brilliantly. The big plus point here though is its torque levels which makes overtaking easy and pretty much effortless, even for a vehicle that I would consider to be large in size. For those of you looking for the fuel figures, I managed around 50+ mpg on the combined cycle.

On the road:

I expected nothing but the best because my test car was fitted with AWD - which basically means you can take it anywhere you like subject to the ride height of course. Remember this is not a Range Rover – but for me, it ticks all the right boxes and its AWD abilities are

very good on pretty much any surface. I was actually amazed at the amount of grip it had on and off-road. Volvo have done a great job in getting this system to work on all surfaces - while still allowing it to feel like a normal road car once you hit the tarmac, which is pretty hard to pull off - as most will suffer from either being a little soft or at the other end of the scale 'rock hard'. But Volvo seems to have found some middle ground here, which is, of course, a real blessing.

Design & Technology:

Volvo's interiors are very similar across all their models now - and are all very 'plush'. Also, everything fits and works well with the driver and nothing is fussy, even the touchscreen display is simple to use and not complex like the one BMW use. The seating is also well designed and even after a 4hr drive to the Norfolk coast, I still felt as fresh as a daisy.

Some of the standard equipment in the XC60 includes; City Safety with Steer Assist - which includes pedestrian, cyclist and large animal protection and front collision warning.

Oncoming lane mitigation - automatically provides steering assistance if you unwittingly drift out of your lane.

Sensus Connect - allows you access to a range of web apps and a lot more, DAB (Digital Audio Broadcasting) Radio, Bluetooth® Handsfree System and a 9" centre console touch screen, two-zone climate control, 8" active TFT crystal driver's information display, heated front seats, 18" alloy wheels, plus a whole host of additional features that will keep you going for weeks to come. But, let's be clear here, a lot of the features in the XC60 point to safety, which means the XC60 is doing all it can to keep you safe & sound.

To sum up:

A great machine that will do it's best to please you every time you turn the key - also, there are no surprises with the XC60 because you have it all wrapped up in one perfect package. So, all that's left to say is a perfect 5 stars from me.

Price: From £35,655 (excluding options)



Cheshire Mini Restorations

Restoring your mini to it's former glory.

We can build, re-build or prepare any Vehicle to your own personal specifications.

We strive to give our customers the best available service, and we are confident that once you experienced our workmanship you will surely come back to us.



The british Mini is getting more and more scarce to obtain in good condition.

We find that Mini owners prefer to keep and restore what they already own for future investment.

We are able to carry out electrical, Mechanical and any body repair.



652 New Chester Road, Bromborough, Wirral, Cheshire CH62 2BA

Telephone: 07851 043 532

www.cheshireminirestorations.co.uk



GAROLLA

ROLLER SHUTTER DOORS



Great For:
Space Saving
Kerb Appeal
Ease of Use

0800 468 1982

THERMALLY INSULATED ELECTRIC GARAGE DOORS



CE Approved

Acoustic & Thermal Insulation



Brush Sealed Rails



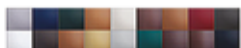
Pay on Completion



Two Remote Controls



18 Colours Available



Free Disposal of your Old Door!

Garolla saves you space inside your garage as the Garage Door rolls vertically into a box. This design requires just 8 inches of headroom and allows you to park closer to the door. Remotely control the Door from the comfort of your car with a hold-to-run remote.

LIMITED OFFER - was £1354

NOW ONLY £895
INC. VAT & FULL FITTING

MADE TO MEASURE, CALL US TODAY

Save £459

01244 960 411

07537 149 128

Phone Lines Open 7 Days a Week

- Offer valid for openings up to 2.6m wide & inc: 2 Remote Keys, 55mm White slats, Internal manual Override -



Titan

PROPERTY SERVICES LTD.

We provide a complete range of Property Maintenance , Repairs and Building Services for homes, offices, schools, shops and other commercial premises.

Our Services include:

- Building Repairs**
- Property Refurbishment**
- Commercial Fit Outs**
- Ground Works**
- Heritage Works**
- Extensions and Loft Conversions**
- Bespoke Oak Joinery and General Joinery**



Titan Property Services Ltd

Regus House | Herons Way | Chester Business Park | Cheshire | CH4 9QR

Telephone: 01244 621871

Email: info@titanpsltd.co.uk | Web: www.titanpsltd.co.uk

LOW COST PRINTING

FOR YOUR BUSINESS OR PERSONAL USE

- Flyers and leaflets
 - Letterheads & Cards
 - Corporate Brochures
 - Posters & Magazines
 - Corporate Identity
 - Vehicle Graphics
 - Shop Signage
 - NCR Pads
 - Business Start-up Packs
- and much more...*

CALL US TODAY & START SAVING ££££'s

Professional design service offered free on every order.



Email: info@cre8tivegraphics.co.uk
Telephone: 07595 303460



MELODY DEAN PILATES STUDIO

PILATES BUILDS A STRONG BODY AND MIND

Based in the heart of Hoole Melody's Pilates Studio is a welcoming and friendly place for you to start your Pilates journey. Melody is a highly qualified and experienced Pilates teacher who specialises in a modern approach to develop mindful movement, balance and strength with everyone she works with.



• Group Class • 121 Private sessions available

Tel: 07951 145 117 • www.melodydean.com
melody@melodydean.com • FB @melodydeanpilates
 The Old Chapel, Housesteads Drive, Hoole, Chester CH2 3DL



COMMUNITY NEWS

Have Your Say - Tell Us & We'll Print It!
Email us @: info@love-chester.com

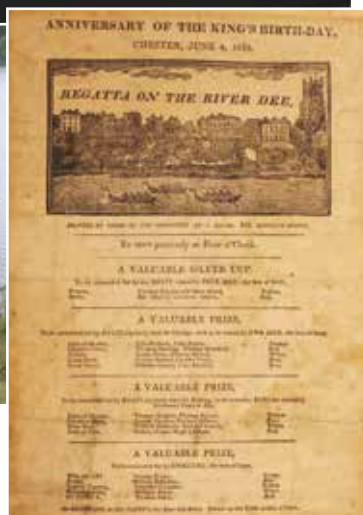
Established in 1733 Chester Regatta is the Oldest Regatta in the World.

Saturday 8 June 2019 - River Dee, Sandy Lane, Chester, CH3 5UL.

Chester Regatta is a very important part of Chester's history, established in 1733 Chester Regatta is proud to be the oldest rowing regatta in the world (predating Henley Regatta and the Oxford / Cambridge Boat Races).

Organised as a cooperative event by Chester's 6 Rowing Clubs*. We attract hundreds of rowers from Rowing Clubs across the country. Racing 750m downstream on the Dee, from the Red House to just past Sandy Lane Park, with crews hoping to win one of the stunning silver trophies on offer.

The event is free to spectators, with great viewing from the Chester Meadows or Sandy Lane. Food and drink on sale all day. It's a super family event, spectating and supporting rowers from ages 12-70+ years old, and is certain to be an exciting racing day for all.



Hot & cold food & drink sold all day. Free for spectators.
New sponsors welcome!

Falls by the wayside



We all love a good waterfall, and occasionally our Club leaders find one we haven't visited for a while and incorporate it into a delightful day's walking.

One sunny Sunday recently, those of us who had opted to do the 'B' walk headed out along the A55 into North Wales, to Aber Falls, near Llanfairfechan. Most people in the group had been there before, but my other half and I had never visited this lovely spot. As always, when heading somewhere new, we were excited at the prospect of treading new ground.

Rhaeadr Fawr, aka Aber Falls, is located about two miles from Abergwyngregyn, near Llanfairfechan. It's a tourist hub, popular with families as there's a very accessible, clearly marked track from the car park, leading straight to the Falls about a mile away. Given that the Club's 'B' walks normally take in about 9 miles' trek in higher, undulating terrain, Aber Falls alone would be insufficient to 'make the grade'. So, our leader, Val, had scoured the OS map and created a longer circular route incorporating a beautiful stretch of the North Wales Path with lovely views inland to mountains dusted with late spring snow, and across the Menai Strait to Anglesey. The Falls themselves were the last point of interest on the walk, and didn't disappoint. We saw them coming from some distance away, long before the footpath actually reached the plunging waters. On the way, we passed a smaller waterfall at Rhaeadr Fach, a pleasing taster of what was to come a short distance further on....

Aber Falls is formed as the Afon Goch plummets 120 feet over an escarpment of igneous rock in the foothills of the Carneddau. Somehow, it was higher and more impressive than I ever expected - a truly a magnificent sight, and, like all waterfalls, very photogenic. While we watched, a double rainbow was spotted through the spray as the waters hit the valley floor, triggering 'oohs' and 'ahs' and much clicking of cameras. Being such a lovely day, a large number of visitors were enjoying the sunshine and beautiful surroundings. We, on the other hand, strode in via a quieter route around the hillsides on the opposite side of the valley, and barely saw a soul until the last hour or so.

Looking round at everyone enjoying the area's natural beauty, it's hard to imagine this part of Britain ever being volcanically active. However, the rocks that make up the geology of the Carneddau area were formed some 500 million years ago, when molten magma from the earth's crust cooled and solidified - a far cry from the lush vegetation and gushing rivers that grace the area today.

Chester Rambling and Hill Walking Club may not have been around quite as long as the mighty Aber Falls, but we're not doing

badly! This summer we are celebrating our centenary. Members recently enjoyed a fabulous dinner to mark the occasion, and as I write, we're looking forward to an evening hike along the River Dee to Eccleston, a re-enactment of the Club's very first walk back in the summer of 1919. Since those early days, we've trodden hillsides, riversides, moors and mountains in every direction from Chester. It would take someone with a far greater grasp of maths than mine to work out how many miles of footpaths our members have walked in the 100 years of our existence.

If you fancy discovering the splendours of the countryside in Cheshire and our surrounding counties, dig out your hiking boots and a rucksack and join us! Our walking club has been around for a long time, so we're clearly doing things right! Why not give us a try?

Check out what we're up to during the summer months by visiting our website: www.chesterwalkingclub.com or take a look at our new Facebook page to see photos of some of our recent walks.

Maria Owen, Press Officer,
Chester Rambling and Hill Walking Club

CHESTER RAMBLING AND HILL WALKING CLUB Founded 1919 - Centenary Year

CHESTER RAMBLING & HILL WALKING CLUB

We are a Chester-based walking club, offering up to 3 grades of walks on Sundays, and alternate Wednesdays, and a programme of short summer rambles on Tuesday evenings. The summer season also sees a flurry of camping activity, when we pack up our tents, hook up the caravans, book B & B's and cottages, and head off to destinations slightly further afield for a few days.

Led by experienced leaders, our Sunday and Wednesday walks last approx 6 hours, so bring picnic, flask and water. These hikes cover Snowdonia and North Wales, Cheshire, Shropshire, Lancashire and Derbyshire. Sorry - no dogs or under 18s allowed on our walks.

The club runs mid-week social evenings during the winter, including supper evenings, quiz nights and the ever popular Christmas party!

Why not come and join us on a trial basis without paying the fee?

Find out more by emailing chesramclub@yahoo.com or head over to our website for more details: www.chesterwalkingclub.com



DIARY DATES JUNE 2019

Now until 9th January 2020
Telescope Walking Tours

Jodrell Bank Discovery Centre,
Macclesfield, Cheshire, SK11 9DW
Tel: 01477 571766

Jodrell Bank will now be hosting their popular Telescope Walking Tours daily for 2019 where you can join one of their friendly Explainers as they take you for a stroll around the base of the impressive Lovell Telescope.

You'll find out more about how the Grade 1 listed Telescope works, explore its fascinating history and discover some of its ground-breaking research. Walking Tours last around 45 minutes, will take place indoors if wet, are available on a drop-in basis and are free with general admission. Talks are aimed at adults and children aged 10+

Monday - Sunday 15:00 - 16:0



10th May - 18 Sept 2019
Open Art Exhibition 2019

Grosvenor Museum, 27 Grosvenor
Street, Chester, CH1 2DD



Sunday 9th June 2019
Chester Dragon Boat Festival

Excitement is building as teams prepare for this year's Chester Dragon Boat Festival in June. The 2018 Dragon Boat Festival will be

held on the River Dee at Sandy Lane.
www.chesterdragonboatfestival.co.uk



12th - 16th June 2019
Bolesworth International
Horse Show

Tattenhall, Chester CH3 9HQ
Phone: 01829 782210

If you're looking for a fun family day out in Cheshire - The Bolesworth International promises to be one of the most exciting events of the summer.

EMAIL: INFO@BOLESWORTH.COM



Saturday 15th June 2019
Taste Cheshire Farmers Market

Northgate Street, Chester, CH1 2HJ
(01244) 304660 - Outside Town Hall

Come and join us every third Saturday outside Chester Town Hall for the Taste Cheshire Farmers Market. Bringing up to 25 great Cheshire based companies together to offer you some of the best local produce. Including sausages, pies, cheese, preserves, crafts and more... So come on down and support the very best of local produce.

9:30am - 4:00pm

Sunday 23rd June 2019
Chester Music Festival 2019

Hunter Street, Chester, CH1 2AR
(01244) 409113

Chester Music Festival returns to Storyhouse this summer with a series of inspiring musical events and interventions across the venue.

The exciting programme brings together special premieres, live jazz, brilliant Big Band sound, world-class classical recitals, contemporary dance, and an indie-folk trio named after a Glasgow curry house. There's even a chance to join in the music-making yourself in the Big Storyhouse Jam-along. Meanwhile, this year's composer-in-residence is the young, multi award-winning Bulgarian Dobrinka Tabakova who creates what the Washington Times described as 'exciting, deeply moving' work.

21st - 29th June 2019
Chester Heritage Festival

60 events taking place both in and around Chester

The Chester Heritage Festival takes place between 21st and 29th June 2019 and has over 60 events taking place both in and around Chester.

Chester and its heritage is brought to life through walks, talks, films, exhibitions, workshops and more. Find out about the history of Chester and how the past has shaped Chester today.



Sunday 30th June 2019
Chester Raft Race 10:15am - 4pm

The Chester Raft Race is an annual charity event which takes place on the River Dee.

Teams construct their own rafts (some more sturdy and ship-shape than others!) and there is much "messaging about on the river"



PLEASE SUPPORT LOCAL CHARITIES

This page is dedicated **FREE** to all registered Charities who wish to advertise.

Sponsored by :



01244 830840

★ DORIN PARK PTA ★

SUMMER FAIR

SUNDAY, 7TH JULY

12.30 – 4.30pm

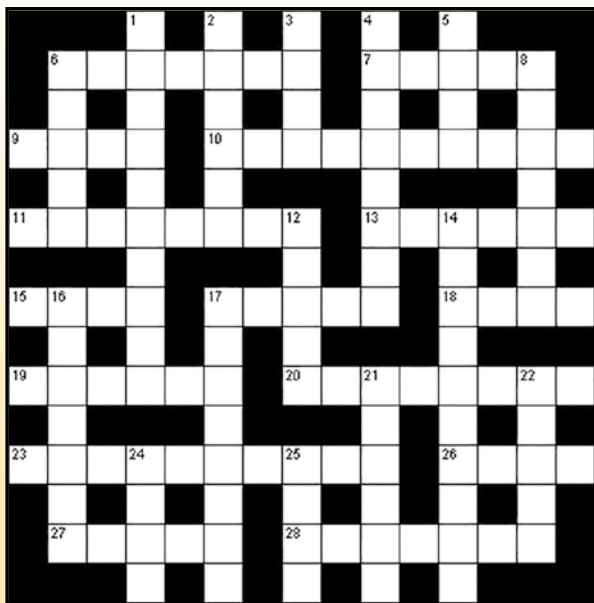
Upton by Chester Pavilion,
CH2 1HD



Starbucks / Face painting / Ice cream van
Fire Brigade / Donkey Rides / Sweet stall
Inflatables / Police / Clare's Mascot Mayhem
Candyfloss / Dee 106.3 & Chester Cat
Cake stall / Free games / Craft station / Pizza
Toy Stall / Children's rides / Dog Show
And much more....50p entry, children go free
For info email PTA@dorinpark.co.uk or contact
Claire 07814 740795 or Amanda 07969 611829

Parentkind
Member Association

PUZZLE CORNER



Down

1. Bookkeeper (10)
2. Slender (6)
3. Naval jail (4)
4. Squirming (8)
5. Leveling wedge (4)
6. Fit out again (5)
8. Rocket launcher (7)
12. Bake in a shallow dish (5)
14. What some science fiction is (10)
16. Belief (7)
17. Rumormonger (8)
21. Promise (6)
22. Our planet (5)
24. Feces (4)
25. Utilized (4)

Across

- | | | |
|-----------------------------|-------------------------|----------------------|
| 6. Recuperate (7) | 13. Influx (6) | 20. Described (8) |
| 7. Rehabilitation (5) | 15. Kind of bean (4) | 23. Dispense (10) |
| 9. Hairdo (4) | 17. Coming and ____ (5) | 26. Classify (4) |
| 10. Make legal (10) | 18. Orange pekoe (4) | 27. Audacity (5) |
| 11. Those without seats (8) | 19. Gap (6) | 28. Our language (7) |

Word Search

- | | | | |
|----------|-----------|------------|------------|
| activity | elevator | illegal | pear |
| annex | erasure | internal | portent |
| beggar | fate | irrational | reactor |
| category | fight | liberal | sacrosanct |
| chastise | frustrate | material | send |
| convert | gasoline | meat | summer |
| crucial | gelatin | musket | vague |
| dangle | gull | nation | vertical |
| deliver | half | often | weary |
| doctor | hermit | opposite | |
| echoes | honor | ores | |

J H E R M I T N E T R O P V T
 B E G G A R O T C O D V E A E
 S V V X E G E N I L O S A G K
 E K E V E E L E V A T O R U S
 O N N R I N T E R N A L C E U
 H O M O T C N A S O R C A S M
 C I A N H I C A R I R I T E M
 E T T O G T C N I T A L E G E
 D A E H I B D A Y A S L G N R
 N N R V F A T E L R E U O E D
 E S I T S A H C L R A G R T A
 S T A F O P P O S I T E Y F N
 Y E L A I C U R C K V H W O G
 M A R L A R E B I L L E G A L
 H S R O T C A E R U S A R E E

Solutions can be found on our website:
www.love-chester.com



Villeroy & Boch

1748



Rempp

KÜCHEN



OCEANS
KITCHENS & BATHROOMS

GERMAN DESIGNER
KITCHENS AND BATHROOMS
CHOSEN BY YOU DESIGNED BY US

Showroom: 24 Chester Road, Buckley, CH7 3AE
Monday - Friday 9am - 5pm | Saturday 10am - 4pm
Tel: 01244 541 482 Web: www.oceanskitchensandbathrooms.co.uk

PLEASE SUPPORT LOCAL CHARITIES

This page is dedicated **FREE** to all registered Charities who wish to advertise.

JOIN THE TEAM



WE HAVE ROLES TO SUIT EVERYONE!

Siobhan, Nye & the Team at **Oxfam Frodsham Street** welcome you to volunteer in your local Oxfam shop.

Volunteering is a great way to:

- Meet new people
- Use your skills and learn new ones
- Indulge a hobby
- Make a difference
- Earn an NVQ

**VOLUNTEER
HERE**

Find out more

Tel.: 01244 319 861

Email: oxfamshopf1308@oxfam.org.uk

Facebook: Oxfam Frodsham Street



OXFAM

**WE
WON'T
LIVE
WITH
POVERTY**



Shop Smart. Shop Costco.

£10 VOUCHER

TO SPEND ONLINE, WHEN YOU SIGN UP FOR MEMBERSHIP†

Costco Wholesale is a membership warehouse club, dedicated to bringing our members quality goods and services at the lowest possible prices.

We provide a wide selection of merchandise, plus the convenience of speciality departments and exclusive member services, all designed to make your shopping experience a pleasurable one. We are confident in the quality and value of our products, and we stand behind them with our guarantee of satisfaction.

The annual membership fee for Standard Trade Membership* is £22 ex VAT (£26.40 inc VAT). The annual membership fee for Standard Individual Membership* is £28 ex VAT (£33.60 inc VAT).



Costco Chester, Dunkirk Trading Estate, Chester Gates, Chester, CH1 6LT

T: 01244 852 071

E: marketing119@costco.co.uk

www.costco.co.uk

PREVIEW OUR WAREHOUSE TODAY!▲

† Sign up for membership with this advert at our Costco Chester Warehouse and receive a £10 voucher to spend online at www.costco.co.uk. New members only. Offer valid until 31/03/19. * Membership Criteria applies. Please visit www.warehouses.costco.co.uk/membership for details. Accepted methods of payment: cash, debit card, cheque or American Express. Membership must be obtained before purchases can be made. ▲ ID required to preview.
JN19989

Giving you more to smile about

There's life after
tooth loss!

A new approach to dentures

Do your dentures cause:

- Frequent embarrassment?
- Difficulty speaking?
- Food restrictions?
- Sore spots and pain?

Our experts can help with our
discreet personal denture services

What we do:

- The very best cosmetic dentures
- Implant retained dentures
- Relines to old dentures
- Additions to existing dentures



CALL NOW FOR A
FREE
CONSULTATION



Smiles & More
Denture clinics

01244 566 118 www.smilesandmore.co.uk

9 St John Street, Chester, CH1 1DA

