

# LOVE Chester

The Monthly Business & Community Magazine



ROTARY MEMBERS

January 2018  
Issue 11

Your **LOCAL** magazine delivered monthly in & around Chester

I'm  
**FREE**  
Pick Me Up!

Merry Christmas  
& Happy New Year  
from all at  
Love Chester  
magazine

USE OUR ADVERTISERS TO KEEP CHESTER BUSINESSES MOVING  
FOR QUALITY, LOCAL and RELIABLE TRADES PEOPLE

[www.love-chester.com](http://www.love-chester.com)  

ONCE YOU HAVE READ ME PLEASE PASS ME ON TO SOMEONE ELSE!

Call: **0151 513 1279** or email: **info@love-chester.com**



**We are now open**

**SUNDAY** 9-6 pm

**MONDAY** 9-6 pm

**TUESDAY** 9-6 pm

**LATE NIGHTS**

**WEDNESDAY** 9-9 pm

**THURSDAY** 9-9 pm

**FRIDAY** 9-9 pm

**SATURDAY** 9-6 pm

**Cut & Finish** £20.00

**Colours**

**Full head highlights** £50.00

including cut & finish

**Half head highlights** £40.00

including cut & finish

# **PERNICKETY HAIR CO**

## **0151 355 3608**

**L'ORÉAL**  
PARIS

**JOICO**  
THE ART OF HEALTHY HAIR

**HEAD  
CANDY**

**ghd**

**FUDGE**

**49 Chester Road, Whitby, Wirral**



# Loving the room.

With **0% finance** available over three years, it's never been more affordable to get more room for everything you love with Sliderobes.



Call or go online now to arrange your  
**FREE AT HOME CONSULTATION**

VISIT OUR SHOWROOM  
**WIRRAL 0151 334 2121**

Unit 3 Welton Road, Croft Trade Park,  
Bromborough, Wirral, Merseyside, CH62 3PQ

**SLIDEROBES®**

SLIDEROBES.CO.UK

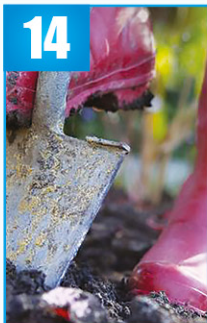
# WHAT'S IN THIS MONTHS LOVE CHESTER MAGAZINE

8



**What's Happening At Our Zoo**

14



**What To Do In The Garden In January**

20



**Holiday Destinations - MALAYSIA**

25



**Chester Rambling & Hill Walking**

26



**Auto Review by Martin Hall**

## Love Chester

The Local Magazine for Businesses in and around Cheshire.

|                                     |    |
|-------------------------------------|----|
| What's Happening At Our Zoo         | 8  |
| Do You Know?                        | 12 |
| What To Do In The Garden In January | 14 |
| Holiday Destinations - Malaysia     | 20 |
| Chester Rambling & Hill Walking     | 25 |
| Auto Review by Martin Hall          | 26 |
| 2018 Diary Dates in Chester         | 29 |
| Support Local Charities             | 30 |
| Community News - Have Your Say      | 31 |
| Puzzle Corner                       | 33 |
| The Live Rooms - Gig Guide          | 34 |

Cover image of Foregate Street Chester City Centre



**Dear Friends,  
January sees us  
welcome in 2018!**

There's often a sense of optimism that accompanies a New Year, new beginnings and encouragement to a fresh start.

Winter months can leave us feeling cold and despondent, the house needs decorating and brightening up, we need more space!

We are fortunate to work with lovely highly professional and reliable tradespeople who offer high quality goods and trades at affordable prices - give them a call to help.

Whatever your plans for the New Year, we wish you every success with them and look forward to seeing you next month.

Look out for us on the road in our Love Chester & Wirral van and keep up to date with us on facebook and our facebook group, twitter & visit us at: [www.love-chester.com](http://www.love-chester.com)

Wishing you a Happy New Year from  
Love Chester magazine &  
"BUDDY" the PUG.

Best Wishes  
Maxine & Mike



Circulation of this **FREE** magazine is distributed to Chester and its surrounding villages.

Love Chester Magazine Limited Registered Office: 1st Floor 12 Church Road, Gatley, Cheadle, Cheshire, SK8 4NQ

Company Number: 10588054

"Love Chester" is produced by an independent organisation; which is not connected to any other organisation, publication or groups. All material is copyrighted and no part of this publication may be reproduced or transmitted without the written permission of the copyright holder.

Please note that we do not endorse any products or services of any advertisers. All advertisements and their content are accepted in good faith. Responsibility for copyright and the accuracy of the information provided lies with the advertiser.



# Your Dream kitchen starts here

**Ellesmere Port  
Showroom Open**

10am - 4.30pm  
Mon to Fri,  
9am - 12pm Sat,  
Closed Sun

**Insist on the original 'top that fits on top'.**

You can have the kitchen you've always dreamed of without the nightmare of weeks of disruption and mess. Our quartz, granite, porcelain and glass worktops are custom-made in our own workshops before being expertly fitted on top of your existing surface by our own craftsmen, transforming your kitchen completely in as little as one day.

## **Start at the top**

Our worktops are just the beginning. With over 30 colours to choose from, there's a style to suit every look, from Country Kitchen to Scandinavian Chic. Add splashbacks, replacement doors, mosaics and flooring to match and your dream has come true!

## **Tough and beautiful**

Our high performance materials are heat, stain and scratch resistant and come with an industry-leading lifetime warranty.

- Worktops, splashbacks, doors, floors, appliances and accessories
- High performance, low maintenance
- No demolition - less waste, less mess, less disruption
- Installed in as little as 1 day
- Local business, global reputation
- Kitchens, bathrooms and more

Ellesmere Port Showroom:  
Unit 17/18,  
Junction 8 Business Park,  
Rosscliffe Road,  
Ellesmere Port CH65 5AA

KITCHEN & BATHROOM MAKEOVERS

Book your **FREE in-home** Design Consultation.

call: **0151 434 4880**  
or visit **trend-ellesmereport.co.uk**

**TREND**<sup>®</sup>  
transformations

## **Speke Display:**

Dobbies Garden Centre, Speke Hall Av,  
Speke, Liverpool, Merseyside L24 1UX

## **Burton Display:**

Gordale Garden Centre, Chester High Rd,  
Burton, South Wirral, Chester CH64 8TF



**MTS Psychotherapy**  
Moving forward

# Set yourself free

Are you struggling to cope?  
Anxiety or Depression?  
Relationship issues?  
Stress at work?

*Why not try Psychotherapy to help  
to get your life back.*

Call Manuela Surgeon on: 07952 656 331

UKCP Registered Adult Psychoanalytic Psychotherapist  
manuelasurgeon@gmail.com

**www.mtspsychotherapy.co.uk**

Enterprise House, Aber Park, Flint CH6 5EX



**HELPING YOU,  
HELP YOURSELF**





# BROWSERS EMPORIUM

**www.browsersemporium.com**

## It's an Aladdins Cave of Treasures

You name it and we've probably got it!





**All types of new & second-hand furniture & fittings to browse under one roof!**

**From bulbs to lights, door handles to doors & stools to tables!**



Hooton Works, Hooton, Wirral (Junction 5 - M53) off A41 to Chester Next to Corfe's)

**Tel: 0151 328 1467**

Open: Mon-Sat from 10.00am

Sunday 10:30am - 3:30pm



All credit cards accepted





Sanctuary Care

*'Keeping kindness at the heart of our care'*



## Upton Dene Residential and Nursing Home


*Residential*  *Residential Dementia*  *Nursing*

### Delivering care with kindness for 20 years

Delivering care since 1997 as part of a not-for-profit group, our vision of keeping kindness at the heart of our care underpins the ethos of our entire organisation.

We regularly welcome the local community into our home and over the next 12 months we will be hosting specially themed events to celebrate our 20 years delivering care - visit our website for more information.

Caldecott Close, Upton, Chester CH2 1FD  
Tel: 01244 569 825



# OUR ZOO

## What's happening at Chester Zoo.

### Baby chameleons hatch in Chester Zoo first



- **Three Cameroon two-horned mountain chameleon babies, which are just 5cm in length, are the first of their kind to hatch at the zoo**
- **New arrivals are so tiny they fit on the end of a finger**
- **Species is listed as near threatened with extinction by the International Union for the Conservation of Nature**

- **Loss of natural habitat is a threat to its survival in the wild**
- **Colourful chameleons are also victim of the international pet trade**

Three colourful chameleons, so tiny they each fit on the end of a finger, have hatched at Chester Zoo.

It's the first time the zoo's reptile experts have successfully bred the species, known as Cameroon two-horned mountain chameleons.





## OUR LATEST NEWS & EVENTS

The first in a clutch of three eggs, laid by mum Ruby, hatched in late August with two more following soon after.

Adam Bland, Lead Herpetology Keeper, said:

***"These chameleons have a really unusual appearance. They're sometimes referred to as the Cameroon sailfin, owing to a sail-like flap of skin running along their backs. The males of the species boast two large horns just above their upper jaw which they use for jousting with other males."***

***"Even as babies they have their iconic large eyes which, at their current size, may appear a little too big for their body. However these give them 360° arc vision so they can see in two different directions at once and look out for predators."***

***"It's the first time we've ever bred the species here at Chester and the team are thrilled."***

As their name suggests, the Cameroon two-horned mountain chameleon is found living at altitude in the West African nation of Cameroon.

Dr Gerardo Garcia, Curator of Lower Vertebrates and Invertebrates at the zoo, added:

***"These chameleons are thought to live in just 10 locations in the highlands of Cameroon as they only thrive at a very particular altitude (between 700m and 1,900m), in very specific forest habitat. As much of the highlands of Cameroon comprise of savannah and grasslands, it really restricts their range. Sadly, with that already small amount of available habitat being affected by human activity - degradation, agriculture and climate change - it's making these chameleons more and more vulnerable."***

***"Another big threat to their survival is the international pet trade. Thousands of live chameleons have been taken from the wild and traded from Cameroon in the last dozen years."***

- [www.facebook.com/chesterzoo1](http://www.facebook.com/chesterzoo1)
- [@chesterzoo](https://twitter.com/chesterzoo)



# Manor Park Residential Home

Established since 1985

**Personalised Residential, Respite & Day Care Services**



Manor Park is close to the River Dee dividing the villages of Holt in Wales, and Farndon in England, both picturesque and historical.

- Specialising in Care for the Elderly with Mental Health Problems
- State of the Art Nurse Call System
- Family run Home with locally appointed experienced staff
- Regular Indoor and Outdoor Activities and Visits, Manor Park is in close proximity to local shops, deli restaurants and pubs, all with easy wheelchair access
- All meals freshly cooked with a 5 Star Rating



To find out more, why not contact or call in and visit with one of our Management Team – Karen, Tracy or Nicki  
Green Street, Holt, Wrexham LL13 9JF or e-mail us at: [manorparkhome@yahoo.com](mailto:manorparkhome@yahoo.com)

**Tel: 01829 270318 find us on facebook** 

## **2 Luxury Apartments in Cabo Roig, Alicante, Spain** **FROM £220 PER WEEK** **Airport transfers can be arranged**

Both can sleep 4 & 1 child. Pools, Tennis Courts, BBQ, Sea Views, WIFI available, in the prestigious Calas de Campoamor. Safe playing area for children - 5 golf courses within 10 min drive - marina close by in nearby Torrevieja you can visit the waterpark and funfair.

Approx 5 min walk from the Complex to the nearest sandy beach. There are several beaches and a Marina with nice scenery just a stroll from the apartment. Murcia airport is approx a 20 min drive and from Alicante it is approx 45 mins.

For further information view the apartment on the website below with the ref. number.

**[www.ownersdirect.co.uk](http://www.ownersdirect.co.uk)**  
**ref no 8054387**

**For bookings contact Gerry on:**  
**Tel: 0151 494 9190**  
**Mobile 07790 980 243**  
**Email: [fergie37@tiscali.co.uk](mailto:fergie37@tiscali.co.uk)**

**No smoking or pets within the apartment.**





# cheshire joinery services ltd

Bespoke hardwood windows and doors

*We wish all our customers, past and present a very  
Happy New Year!*



Join us for a workshop tour and have a bag of briquettes on us!!

Unit 1b, Barrowmore Estate, Gt Barrow, CH3 7JA  
[www.cheshirejoineryservices.com](http://www.cheshirejoineryservices.com)  
[info@cheshirejoineryservices.com](mailto:info@cheshirejoineryservices.com)  
**Tel: 01829 741751**

# DO YOU KNOW?

1. 99% of the microbes inside us are unknown to science.
2. Shirley Temple always had exactly 56 curls in her hair.
3. The actor Will Ferrell was a mall Santa before he became famous.
4. In 2012, Google acquired Motorola for around \$12.5 billion, only to sell it to Lenovo two years later for just \$2.9 billion.
5. After his very first performance, Elvis Presley's manager Jimmy Denny said, "You ain't goin' nowhere, son. You ought to go back to drivin' a truck."
6. TV show "The Sopranos" was so accurate that when the FBI listened to wiretaps, the real mob would be discussing the show and thought they had somebody on the inside. They couldn't believe how accurate the show was.
7. Sleeping under a weighted blanket can help reduce insomnia and anxiety.
8. Billionaire Howard Hughes bought the small Silver Slipper casino for the sole purpose of moving its trademark neon silver slipper. Visible from Hughes' bedroom, it had apparently kept him awake at night.
9. A former Macy's salesperson became Queen of Romania in 1948.
10. There are over 30 places in the world named "Paris."
11. In Japan, there are cafes where you can hang out with owls.
12. In 1923, Babe Ruth set the record for the most home runs in a season, while also striking out more than any other player in Major League Baseball.
13. At age 22, Walt Disney was fired from a Missouri newspaper for "not being creative enough."
14. The state of South Carolina gave Marilyn Manson US\$40,000 not to play there, and schools in Florida threatened to expel students who attended his shows.
15. Jack Daniels employees get a free bottle on the first payday of each month.



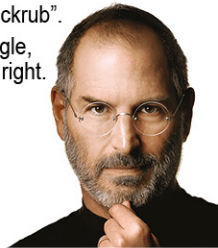
16. Albert Einstein's last words were spoken in German to a nurse who didn't speak German and are lost for ever.
17. You can remove blood stains on clothes with Coca-Cola.

12

18. Subway makes enough sandwiches in a year to wrap around the Earth 14 times.
19. It only takes 6 minutes for brain cells to react to alcohol.
20. Alcohol is not digested; it gets absorbed directly into the bloodstream.
21. The official name of Spain is the "Kingdom of Spain."
22. On any given workday, up to 50,000 employees worked in the WTC twin towers before 9/11.
23. Every day, 16% of the searches that occur are ones that Google has never seen before.

## Google

24. Google was originally called "Backrub".
25. If you search for "askew" in Google, the content will tilt slightly to the right.
26. 350,000 Tweets are sent every minute.
27. Twitter has 310 million monthly active users, almost the same as the U.S. population.
28. Steve Jobs was dyslexic.
29. Every Apple iPhone ad displays the time as 9:41 AM, the time Steve Jobs unveiled it in 2007.



30. Steve Jobs was awarded 141 new patents since his death.
31. When the first prototype of Apple's iPod was shown to Steve Jobs, he dropped it in an aquarium and used the air bubbles to prove there was empty space and it could be made smaller.
32. A secretary once told Steve Jobs she was late for work because her car wouldn't start. That afternoon, Jobs threw her a set of keys for a brand new Jaguar, saying: "Here, don't be late anymore."
33. 600,000 hacking attempts are made to Facebook accounts every day.
34. You can change your language on Facebook to "Pirate."
35. August 2014 was the warmest August ever recorded globally.
36. Cows emit more methane than the oil industry and are a huge factor in global warming.







# Sherlocks

*Big Enough To Manage — Small Enough To Care*



## Dear Residents

At Sherlock Estate Management we specialise in the day to day running of apartment blocks, large and small both locally and throughout the region. We are a friendly company and have been established since 1986 in the centre of Liscard, which is located in Wallasey, Wirral.

We are pleased to have an opportunity to offer you our services as estate managers. We do appreciate considering a management company can be a delicate decision but we can assure you that we are **100%** confident that we can help you. With this in mind we would be more than happy to call and see you, or you are more than welcome to visit us here at our office. Our time is your time.

We feel residential management requires a personalised approach and given the opportunity, we will endeavour to familiarise ourselves with you and your property and match our service to your requirements, this is something we pride ourselves on.

The items below illustrate a number of day to day tasks that we can administer on your behalf:

***Service Charge Collection***

***Legal Matters***

***General Cleaning***

***Gardening***

***Window Cleaning***

***Decorating***

***Maintenance***

***Insurance Policies***

***Annual Accounts***

***Neighbourly Issues***

*We can arrange new or retain existing contractors and can help with as much or as little as you need.*

Sherlock House, Manor Road, Wallasey, Wirral, CH45 4JB

**Telephone: 0151 638 8160**

**[www.sherlockpropertymanagement.co.uk](http://www.sherlockpropertymanagement.co.uk)**





# What to do in the Garden in January

In frosty weather little can be done in the garden. The ground is too hard to dig or plant and the lawn should not be walked

on. Although there is very little work to do, January ushers in the beginning of a new year that is full of promise in the garden.

## English Countryside Winter Scene

Despite the low temperatures and short daylight hours, there are some useful tasks that can be done. If the weather is mild, you can still plant roses and bare rooted shrubs and trees. At this time of year a heated greenhouse has great appeal, especially when the weather is too cold and wet to work outside. The warmth of a heated cold-frame or greenhouse or even a sunny indoor window enables you to sow annuals that need a long growing season and start of those early vegetable crops. Roots of favourite herbs, can also be lifted and brought indoors, to provide fresh shoots and leaves for winter flavour.



Winter digging is necessary for beds and borders that need to be planted in early spring. The earlier this is done the better, allowing time for frosts to act and break down the soil. The longer any rough clods of soil are exposed to frost, the easier it will be to get a fine tilth in spring. While digging, it is a good idea to work in plenty of well-rotted manure or garden compost at the same time, thus improving the soil's texture and richness.



If you have planted any trees or shrubs during the winter months, check that they haven't been lifted by frost. Once lifted, they can rock in the wind and their roots will be slower to get established. Re-firm the plants by pressing down on the surrounding soil with your feet. You may also need to stake any tall or exposed plants to prevent further wind rock.

If the surface of water features or a pond has frozen solid, and particularly if it contains fish, break the ice with care. If the ice is very thick, use a little boiling water rather than a hammer, to avoid shock waves which can kill the creatures beneath.

## Planning Next Season's Garden

The long winter evenings provide plenty of time to browse through seed catalogues and plan new projects in the garden. Late January to early February is an ideal time to visit garden centres to buy seeds, tubers and bulbs for the coming season. If you are ordering products from a seed catalogue, or over the internet, it should be done as early as possible or they may arrive too late for their proper sowing or planting dates.



## Maintain and Check Garden Tools and Equipment

Make sure that mechanical equipment such as mowers, rotovators, edgers, strimmers and hedge trimmers are in good working order. If any need repairing or sharpening, take them in for servicing by a professional.







For all your **natural** stone



**Wirral's No.1**  
for stoves & solid fuel

NATURAL STONE HEARTHES | SOLID TIMBER BEAMS | MULTI FUEL STOVES | DEFRA APPROVED STOVES  
STOVE ACCESSORIES | COAL | SMOKELESS FUEL | ECO FUEL · SEASONED LOGS | KINDLING | FIRELIGHTERS

# RELAX, PUT YOUR FEET UP AND ENJOY CORFE SOLID FUELS!

50kg Open Sacks delivered of both  
Smokeless and Housecoal

House Coal



Smokeless  
Coal

Firelighters



Homefire Kiln  
Dried Logs



Kindling



UK Heatlogs



Logs

Jumbo Bags from **£75**  
Hardwood or Softwood



Straws



Anthracite



## Don't Shiver We Deliver!

HOOTON WORKS | HOOTON ROAD | HOOTON | WIRRAL CH66 7NB | TEL: 0151 327 5555

Visit our website: **[www.corfestone.com](http://www.corfestone.com)**

Open Monday - Friday 8am - 5pm, Saturday 9am - 4pm





30 Years Experience  
in Professional  
Gardening &  
Landscaping



**Quality Regular Maintenance**  
or one off garden tidy ups - no problem!

*It's what we do that matters!*

All garden work: clearing, turfing, moss removal, lawn mowing, scarifying, planting, small trees, hedges, jet cleaning, fencing, rockeries, water features and pruning.

*We specialise in all garden work  
carried out to the highest level.*

**Tel: 0151 334 6227 or**  
**Mobile: 07425 159 788**  
Email: leehanleylandscapes@hotmail.co.uk

- HOME GARDEN MAINTENANCE
- PUBLIC HOUSES/RESTAURANTS
- APARTMENT BLOCK GARDENS
- CAR SHOWROOMS
- NURSING HOMES
- CHURCHES
- HOTELS

*... and much more!*



There are plenty of gardeners to choose from -  
so why choose us?

**Beautiful gardens start with us...**



# A.S.H.

**Tree Surgery**

All aspects of tree surgery  
and site clearance undertaken

**LOGS/FIREWOOD**

**£45 per bulk bag**

(mixed wood)

**£65 per bulk bag**

(hard wood)

**£5 off next order**

on return of bag

**Delivered loose**

**£40 per bag mixed wood**

(most economical way  
of delivery)

**MOBILE LOG SPLITTING**

Do you have logs/trunks that  
need processing?

We have large 30 tonne log  
splitter for hire comes with  
operators, or a smaller 20  
tonne splitter with operator.

Mobile circular saw  
with operator.

*Call for details.*



## Call 07836 370280

**LOGS & FIREWOOD - TREE SURGERY & LANDSCAPING WIRRAL & CHESTER**

**www.ash-services.co.uk**

16 Two Mills Barn, Welsh Road, Woodbank, CH1 6HT Email: ashservices@icloud.com



# LPW PLUMBING SERVICES

**Your Local Emergency Plumber**

- 24 HOUR PLUMBING
- ALL GENERAL PLUMBING REPAIRS UNDERTAKEN
- PLUMBING MAINTENANCE
- ALL BLOCKAGES
- BATHROOM DESIGN & INSTALLATION
- ALL WORK FULLY INSURED

WIAPS - Water Industry Approved Plumbing Scheme

Call Lawrence on:

**07738 462315**

01928 898375 (After 6pm)

[www.lpwplumbingservices.co.uk](http://www.lpwplumbingservices.co.uk)

[info@lpwplumbingservices.co.uk](mailto:info@lpwplumbingservices.co.uk)



## Indian Cookery Lessons

Learn to make your own authentic Indian meal, fresh and delicious, full of flavours

**LEARN OR GIFT SOMEONE A WONDERFUL LIFE SKILL**

**Book NOW for day courses**

20 Jan, Saturday, 10am-4pm

27 Jan, Saturday, 10am-4pm

10 Feb, Saturday, 10am-4pm

03 Mar, Saturday, 10am-4pm

Claremont Farm kitchen, Wirral, CH63 4JB.  
Vegetarian classes also held.



Contact: **SOMA:**

**07770752053 or 0151-3349352**

## ARK Contemporary Designs

by **Angela Ruth Kennedy**

Beautifully Handcrafted Jewellery



commissions • repairs • sales • tuitions • workshops

[www.arkcontemporarydesigns.co.uk](http://www.arkcontemporarydesigns.co.uk) | Tel: 07917 330790 | 01244 567012

Fencing  
Gates  
Sheds & Log Stores  
Decking  
Paths & Patios

# Justfencing

C H E S H I R E

Installers of quality timber fencing

**FREE NO OBLIGATION QUOTES**

**0151 336 7598 / 01244 470 120 / 07957 349 244**

[www.justfencingcheshire.co.uk](http://www.justfencingcheshire.co.uk)

# TWO GREAT DEVELOPMENTS FROM ONE AWARD WINNING HOUSEBUILDER...

**WATKIN JONES**  
HOMES



## Cestria Row

Milton Street,  
Chester CH1 3DS

Situated in the historic city of Chester, Cestria Row is a development of just eleven 3 bedroom townhouses and one 4 bedroom property.

Conveniently close to the city centre, Cestria Row will prove ideal for couples, professionals and families looking for a new home close to a variety of amenities.

**HURRY -  
LAST FEW PLOTS  
REMAINING**

**Prices from £260,000**

Help to Buy available  
on all plots - ask our  
Sales Advisor  
for details.



For more information call  
**07778 966 732**  
OR VISIT OUR WEBSITE



## Cestria II - Quayside

Chester CH1 4HJ

**Reservations now  
being taken**

On our exclusive development of 24 new 2 bedroom apartments situated by the River Dee.

Ideal for professionals or couples Cestria II - Quayside is ideally located for those who want to reside in the heart of Chester, close to everything this vibrant city has to offer.

**SALES &  
MARKETING SUITE  
NOW OPEN**

**TO RESERVE YOUR  
NEW HOME CALL  
07766 902013  
OR VISIT OUR WEBSITE**

Images are for illustrative purposes only. \* Terms and conditions apply. Please ask for details.

**WATKIN JONES & SON LTD** 55 Ffordd William Morgan, St Asaph Business Park, St Asaph, Denbighshire LL17 0JG

**watkinjoneshomes.co.uk**







## Are you thinking about care for a loved one this winter?

The festive season can be a joyous time, but can also be a time for reflection – the realisation that an older person close to you may be struggling to cope at home.

**Whether it's the challenges of age, the feeling of loneliness or the pressures of winter, Oak Grange Care Home could be the new beginning that's needed.**

**OPEN DAY: SATURDAY 27TH JANUARY • 12PM–4PM**

Whether you need urgent care or just some help and advice, our friendly team at **Oak Grange Care Home** are here when you need them.

**Call: 01244 434 385**

Mollington Grange, Parkgate Road, CH1 6NP



**OAK  
GRANGE**

BARCHESTER HEALTHCARE

[www.barchester.com](http://www.barchester.com)

**Nursing • Residential • Dementia • Respite**

# HOLIDAY DESTINATIONS MALAYSIAN PENINSULA



**Singapore** - the very name summons visions of the mysterious east.

The commercial centre of the South East Asia, this island city-state of four million people is a metropolis of modern high-rise buildings, Chinese shop-houses with red-tiled roofs, sturdy Victorian buildings, Buddhist temples and Arab Bazaars.

Founded in 1819 by Sir Stamford Raffles of the fabled East India Company, the city is a melting pot of people and cultures. Malay, Chinese, English and Tamil are official languages. Buddhism, Taoism, Islam, Hinduism and Christianity are the major faiths.

Singapore is an ever-fascinating island boasting colourful traditions, luxurious hotels and some of the finest duty-free shopping in the world. Lying just 85 miles North of the equator at the tip of the Malay Peninsula, the island was a haven for Malay pirates and Chinese and Arab traders.

## **Kuala Lumpur (Port Kelang)**

From a lawless huddle of Kampongs in the trackless jungle, Kuala Lumpur, the Capital City has grown into a fascinating metropolis. Steel and glass towers stand side by side with graceful stone colonial buildings and

mosques adorned with slender marabouts.

The commercial, financial, economic and cultural heart of Malaysia, Kuala Lumpur (better known as KL), is a melting pot. Its population of 1.6 million is comprised of Malays, Chinese, Indians, and a mix of different cultures including Eurasians and others.

## **Penang**

In 1786 Francis Light persuaded the Sultan of Kedah to cede Pulau Pinang - The "Isle of Betel Nut" - to the English crown. Legend has it that Light persuaded his men to clear the overgrown island of Penang by firing a cannon filled with gold coins into the jungle as an incentive. The island was renamed Prince of Wales Island, and its major town was renamed George Town after King George III. Whether the story is true or not, Penang quickly became a major trading port for tea, spices, china and cloth. Here European, Malaysian, Hindu, Arabic and Chinese cultures met, melded and flourished.

Today George Town is a cosmopolitan city that has preserved its unique heritage and its exotic blend of cultures. George Town is perhaps the best preserved city in South East Asia. It boasts a European-style esplanade and a wealth of temples, mosques and

Chinese clan houses.



## **Phuket**

Hailed as the "Pearl of the Andaman Sea", this island off Thailand's long Southern coast boasts a colourful history. A crossroads for trade, Phuket's importance over the past 500 years stemmed from the island's natural resources, which include tin, hardwoods and rubber. In the past half-century, Phuket has enjoyed wide popularity as one of the premier travel destinations in South East Asia. Travellers are drawn to the island's beaches, crystalline waters and dramatic coastlines.

If you would like to visit Malaysian Peninsula then call in to see us at one of our many branches or visit

[WWW.HAYSTRAVEL.CO.UK](http://WWW.HAYSTRAVEL.CO.UK)

**Hays Travel**

Jet2holidays First Choice Thomson Thomas Cook  
 Lastminute P&O CRUISES Celebrity Cruises Fred Olsen Cruise Lines



*holidays*  
FOR UP TO

**HALF  
PRICE**

WHEN YOU BOOK  
**THE HAYS WAY**

**NEVER BEATEN ON PRICE**

**FREE CHILD PLACES**

**LOW DEPOSIT FROM ONLY £49**

**UK'S LARGEST INDEPENDENT TRAVEL AGENT**

**ABTA & ATOL PROTECTED**

**99% OF OUR CUSTOMERS RATE US GOOD OR BETTER**

***Hays Travel***

**Jet2holidays**  
Package holidays you can trust



**First Choice**



**Thomson**



**Thomas Cook**



**P&O CRUISES**



**Celebrity**



**Cruises**



**Fred. Olsen Cruise Lines**

**Branches at:**

**Chester City 01244 456786 | Connahs Quay 01244 836748**

**Flint 01352 761000 | Mold 01352 757000 | Wrexham 01978 266611**

Terms and conditions apply. Ask in store for more details



# STUART HENRY KITCHENS LTD

Multi Award Winning  
family run business with  
30 years experience.

Full 12 unit kitchen with  
appliances and accessories

**for £3500**

Excludes installation

**\*\*LIMITED TIME ONLY\*\***

Recently fitted by us  
for Mr & Mrs H  
in Bromborough



1 The Rake Precinct, Bromborough, Wirral CH62 7AD



Phone 0151 334 7775 | [www.stuarthenrykitchens.co.uk](http://www.stuarthenrykitchens.co.uk)

ZevTech UK Ltd  
8 Water Street  
Liverpool  
L2 0RD



## ZEVTECH

Telephone: 03333 230 009

ZevTech UK Ltd,  
24th Floor, The Shard  
32 London Bridge St  
London SE1 9SG

### Is your business suffering from poor internet speeds?

We can help your business with guaranteed upload and download speeds.  
Fibre and Wireless connections available.

Business Broadband Connections,  
VoIP, Mobiles, Landlines.

**10% DISCOUNT** - for Love Chester readers



[www.zevtechuk.co.uk](http://www.zevtechuk.co.uk)  
Gareth@zevtech.co.uk





**LIVING  
FLOORS**  
*& more...*

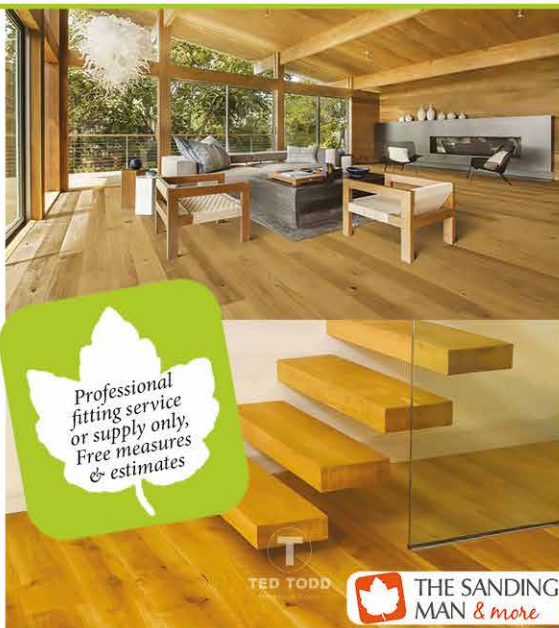
## Wood Floor Specialists

A Family Business, Est 1997

**Ted Todd Flooring**  
**Quickstep**  
**Livyn Luxury Vinyl**  
**Floor Sanding**

**Opening Hours**

*Monday - Saturday*



Unit 1B, Chester Trade Park, Bumpers Lane, Sealand CH1 4LT  
Phone 01244 382416 | [www.living-floors.co.uk](http://www.living-floors.co.uk) | [www.thesandingman.com](http://www.thesandingman.com)



**LIVING PLANTATION  
SHUTTERS & BLINDS**

A Family Business, Est 1997

All types of made to measure  
blinds supplied

**CONSERVATORY SAIL BLINDS**

**VENETIAN**

**ROLLER**

**VERTICAL**

**ROMAN**

**SENSES**

**Opening Hours**

*Monday - Saturday*



Unit 1B, Chester Trade Park, Bumpers Lane, Sealand CH1 4LT  
Phone 01244 382416 | [www.livingshuttersandblinds.com](http://www.livingshuttersandblinds.com)



**Keeping the roof  
over your head™**

## **Covering Cheshire, Merseyside, Wirral & Surrounding Areas**

- House Roof Renewals**
- Roof Re-Slates**
- Firestone EPDM Rubber Flat Roofs**
- Flat To Pitched Roof Conversions**
- Fascia, Soffit, & Gutter Renewal**

**Please Contact Us For A Free Quote**

 **08006344821**  **@robmcroof**

 **07960397021**  **info@rm-roofing.co.uk**

With a reliable, friendly and hard working team we can guarantee you a high standard of work with a very professional service. Our customer satisfaction rate is outstanding and we aim to keep those standards high. For photos of our work, reviews and more please visit our Facebook Page

**All Work Comes With A 10 Year Guarantee**





# Winter Warmers



Weather too chilly? Too wet? Too muddy? We are all more than capable of finding an excuse not to walk during winter's cooler climes. However, in my experience, getting out in the hills and valleys for a brisk hike is the most invigorating and satisfying activity for a cold January day. Several layers of clothing, plus scarves, gloves, woolly hats and thick socks - these will keep the warmth in, and those biting winds out. We rarely venture out without waterproofs either, and gaiters to prevent mud from seeping inside the boots. So far this winter, we've experienced gale force gusts, heavy rain and gruesome mud in places, but no snow as yet...

One recent Sunday walk was up in the Llantillios, near Llangollen. It was a cold, cloudy, windy day, but the forecast promised improvements later. We'd started from the National Trust car park by the Horseshoe Falls. From there, a rather arduous climb took us up to the disused Berwyn Quarry, where we stopped for a well earned breather, coffee and a glorious view down the Dee Valley. Up a little higher, we veered northwards to the summit of Moel y Faen. On this open stretch, the full force of the icy wind hit us full on, so admiring the view across the Vale of Clwyd was necessarily curtailed! From here, we dropped down to the Ponderosa Cafe, above the Horseshoe Pass. This wasn't to be our lunch stop, though. We found an alfresco picnic stop in the shelter of some tussocky ground further on, below the summit of Cyn y Brain. The sun had come out by this time, though we were still glad of our layers and our hot flasks! Looking southwards, we could see the route we'd taken up from the old quarry, and there was a great feeling of satisfaction that most of the climbing was behind us. From this point onwards is my favourite part of the walk. Skirting the upper slopes of Cyn y Brain, we briefly joined the Clwydian Way, before heading in a southerly direction across fields to meet the old quarry track that runs parallel to the Eglwysseg Valley below. The reason I love this section so much is the sensational view across to Eglwysseg Rocks that accompanies you back down towards the valley. That particular day, patchy sunshine had brought out the contrasting colours of the bracken, the trees and the limestone rocks. It was a truly glorious sight, and made the climb and the battle against the gusts higher up very worthwhile. Lower down, we were sheltered from these winds, and actually got rather hot underneath our layers! This didn't last long, though, as temperatures soon plummet, along with sun, during the winter months. Thankfully, there's usually a drop of coffee left in the flasks for an afternoon break, and we finished this off before setting off for those last few miles.

Our return route took us temporarily back onto the Clwydian Way, before cutting across to skirt the bottom of Velvet Hill. This lovely little footpath undulates gently along the hillside above Valle Crucis Abbey, before heading into the trees above the river, and to the car park. There hadn't been too much mud

that day, and the boots were far from gruesome, but it was good to change into lightweight shoes prior to a brief rest and refreshment in the nearby pub. This welcoming hostelry did a brisk trade in hot drinks when 24 tired but exhilarated ramblers tumbled into their bar after a fairly tough hike!

Our 'B' walk that day was nearly 10 miles long. On the same day, a shorter, easier 'C' walk had been offered in the Dee Valley, starting from Llangollen, so there was a good influx of walkers in the area from our Club.

Members often comment on how glad they were that they didn't turn the alarm clock off and have a lie-in on an inclement morning. Whatever the weather, it's still great to be stepping out in the hills, valleys and woods, and if you fancy walking with a group, what better way to do this than by joining a local rambling club?

Check out what we're up to during the winter months by visiting our website: [www.chesterwalkingclub.com](http://www.chesterwalkingclub.com) Maria Owen, Press Officer, Chester Rambling and Hill Walking Club

Check out what we're up to by visiting our website: [www.chesterwalkingclub.com](http://www.chesterwalkingclub.com)

## CHESTER RAMBLING & HILL WALKING CLUB

We are a Chester-based walking club, offering up to 3 grades of walks on Sundays, and alternate Wednesdays, and a programme of short summer rambles on Tuesday evenings. The summer season also sees a flurry of camping activity, when we pack up our tents, hook up the caravans, book B & B's and cottages, and head off to destinations slightly further afield for a few days.

Led by experienced leaders, our Sunday and Wednesday walks last approx 6 hours, so bring picnic, flask and water. These hikes cover Snowdonia and North Wales, Cheshire, Shropshire, Lancashire and Derbyshire. Sorry - no dogs or under 18s allowed on our walks.

The club runs mid-week social evenings during the winter, including supper evenings, quiz nights and the ever popular Christmas party!

Why not come and join us on a trial basis without paying the fee?

Find out more by emailing [chesramclub@yahoo.com](mailto:chesramclub@yahoo.com) or head over to our website for more details: [www.chesterwalkingclub.com](http://www.chesterwalkingclub.com)

# AutoReview by Martin Hall

Keeping you motoring

## Citroën C3 Flair S&S PureTech 110 manual: **Dance With You Tonight**



*The all new C3 Flair S&S PureTech 110, a Citroën in the grand tradition, a combination of Flair and engineering which have created a car that Citroën say is 'As Unique As You Are.'*

Citroën make a great play of the customisation options available as there are 9 exterior colours to choose from, 3 roof colours, and the option of a monotone body colour roof which combine with touches of colour including fog light surrounds, door mirrors and rear quarter panels. You can go with or without the excellent Airbump® panels although I can't see why you would want to, so integral are they to the overall look and feel to the car and to top it all there's also an optional panoramic sunroof which floods the cabin with natural light.

Complimenting the superb colour palette are clever touches that delight and intrigue in equal measures created by the bold choices all around. The steep front of the car displays the Citroën's clever headlights emerging from the iconic badge and grille, whilst each further detail, Citroën say, from the lighting signature with LED daytime-running lights, wheel arch extensions, side Airbump® panels and stunning 3D rear light clusters contribute to the C3's Unique and assertive styling. The C3 Flair S&S PureTech 110 manual on test looks superb in its metallic Perla Nera Black paintwork, white highlights on its Airbump® panels and stunning optional 17 inch diamond cut 'Cross' alloy wheels. There's no doubt in my mind that this is a car that deserves that all important rearward glance as you walk away.



Citroën have created a comfortable and contemporary interior with soft contact points and noise levels, interior space and versatility, intuitive and useful technology and pure, calm comfort all round. What I really is how the C3 combines traditional materials such as the beautifully finished overstitched door straps with the high quality, soft touch modern plastics and technologies that surround you.

With air vents, door card detailing and numerous little touches that reflect the Airbump® technology that's so important to Citroën and the look of the C3, it's no surprise to find that same level of care and attention being applied to the technology and driving aids present. Helpfully, the Citroën's variety of technologies are easily controlled through the central 7 inch touch screen making it easy to set the car and it's features up exactly as you would like.

Rather impressively, the C3 includes: Hill Start Assist, Lane Departure Warning System, Coffee Break Alert, Speed Limit Recognition And Recommendations, Cruise Control/Speed Limiter With Speed Limit Setting, Keyless Entry And Start, New Active Safety Brake, Reversing Camera and the incredibly useful Blind Spot

Monitoring System, every Car should come with this. If it's ease of use you want then look no further. Space for up to five adults and their luggage whilst the C3's suspension does what Citroën historically does best, providing you with a sorted and forgiving ride quality. Pressing on and the C3 allows you to accurately track the road ahead and place the car where you want. Braking mid corner causes no untoward moments whilst the frugal PureTech 110 S&S three cylinder, direct injection, turbo charged engine gets on with the job in hand, producing 109bhp at 5500rpm and 151 ft/lb torque at 1500rpm yet still giving up to a claimed 61.4mpg on the combined cycle. Impressive indeed.

The C3 can be turned into something unique and tailored exactly to your own tastes from the numerous colours and styling options available is an added bonus. The Citroën C3 Flair S&S PureTech 110 manual, a job which Citroën have completed very well indeed.

**Where will you go?**

## **NEW CITROËN C3** **A BOLD, COLOURFUL** **PERSONALITY**



# INTIMATEDDETAIL

EXCLUSIVE VALETING AND AUTOMOTIVE DETAILING



**INTIMATEDDETAIL.CO.UK**

Professional Mobile Service

**07581 229 029**

Vehicle Detailing | Luxury Car Care | Upholstery and Carpet Cleaning  
Leather Cleaning and Protection | Hydrophobic Coatings | Paint Correction and Enhancements  
New Car Protection Packages | Soft Top Cleaning and Coating | Stone Chip Repair  
Skilled, Proven and Insured



*Oakwood Farm Mews Chester*

Oakwood Farm Mews  
Oakwood Farm, Parkgate Rd.  
Chester CH1 6EY  
Tel: 01244 880828

You can look forward to a warm welcome at Oakwood Farm Mews. We provide modern en-suite accommodation on the outskirts of Chester and are conveniently located for Chester Races and the M56 link to Manchester and Liverpool.

Stay with us and enjoy

Fully en-suite accommodation

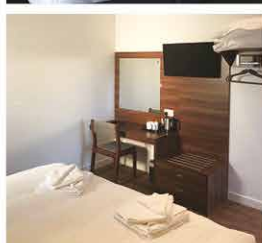
Spacious, comfortable rooms

Free Wireless Internet

Proximity to Chester and the M56

Our rooms are priced from just £50 per night and we are happy to welcome both tourists and business travellers for any length of stay.

Dogs are permitted in guest rooms at an additional £10 per night.







# DIARY DATES JANUARY

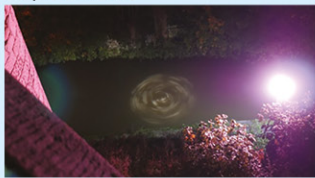


## 27 Oct 2017 - 27 Oct 2018 Maelstrom Art Installation

King Charles Tower, City Walls,  
Chester, Cheshire

### \*Dawn til Dusk

Maelstrom, a public artwork by artist David Cotterrell, will acknowledge Chester's evolving relationship with water and provide an excuse to stop and stare; to encourage alternate viewpoints and to reward urban curiosity and contemplation. The Maelstrom, or whirlpool, will be created by projected light and animation upon the canal, creating the illusion of shifting currents within the waterways that intermittently appear and disappear, creating a sense of wonder and surprise within.



## 6 Jan 2018 Frozen Sing Along

Grosvenor Museum, 27 Grosvenor  
Street, Chester, Cheshire, CH1 2DD

Day Times  
Saturday 11:00

Come along to this **FREE** Screening of **Frozen Sing Along** to the hit musical comedy from Walt Disney Animation Studios. Follow the lyrics with a bouncing Frozen snowflake. Join Anna as she sets off on an epic journey—teaming up with rugged mountain man Kristoff and a snowman named Olaf—to find her sister Elsa, whose icy powers have trapped the kingdom of Arendelle in eternal winter. It's pure enchantment—and full of fun for the whole family!



## 3 Nov 2017 - 4 February 2018 Techne: Creating Art

Exhibition: Gallery Two,  
The Grosvenor Museum, 27  
Grosvenor Street, Chester,  
Cheshire, CH1 2DD  
Tel: 01244 972197



This exhibition celebrates the making of art through the work of five artists – Chris Bebbington (photography), Greg Fuller (printmaking and drawing), Tom Hignett (digital), Tabitha Jussa (photography) and Chris Millward (sculpture). Employed as Technical Demonstrators in Art and Design at the University of Chester, their expertise covers a vast array of methods and techniques. Including both modern and traditional processes, the exhibition provides a little something for many different.

## 10 January 2018 Chester Music Society Celebrity Concert

St Mary's Creative Space,  
St. Mary's Hill, Chester, Cheshire,  
CH1 2DW Tel: 01244 383455

Tickets £15 from Chester  
Visitor Information Centre; by  
telephone: 0333 666 3366; or  
online: [www.ticketsource.co.uk/](http://www.ticketsource.co.uk/)  
chestermusicsociety



Matthew Scott clarinet  
Daniel King-Smith piano  
Poulenc Sonata for clarinet & piano  
Horowitz Sonatina for clarinet &  
piano

Weinberg Sonata for clarinet and  
piano, Op 28  
Prokofiev Sonata in D major, Op 94  
Debussy Première Rhapsody  
Chabod Variations on the  
Nutcracker Ballet

Matthew Scott graduated with a 1st  
Class honours degree from the Royal  
Academy of Music in 2013, followed  
by an MA with Distinction and  
DipRAM in 2015. He was generously  
supported by The Countess of  
Munster Musical Trust

Day Times  
Wednesday 19:30 21:45

## 25 Nov 2017 - 7 Jan 2018 Christmas Tree Festival

Chester Cathedral, 12 Abbey Sq.,  
Chester, Cheshire, CH1 2HU  
Tel: 01244 500959

From the end of November, Chester  
Cathedral cloisters will be filled with  
more than 40 majestic Christmas  
trees. Escape from the hustle and  
bustle of the festive period and lose  
yourself in our astonishing tree-lined  
winter walkways.



| Day       | Times       |
|-----------|-------------|
| Monday    | 09:00 18:00 |
| Tuesday   | 09:00 18:00 |
| Wednesday | 09:00 18:00 |
| Thursday  | 09:00 18:00 |
| Friday    | 09:00 18:00 |
| Saturday  | 09:00 18:00 |
| Sunday    | 09:00 18:00 |





## The Countess Charity

## Countess of Chester Hospital **NHS** NHS Foundation Trust

### A walk down Memory Lane is planned at The Countess of Chester

The Countess Charity launched its Memory Lane project back in September with support from the Mollington Banastre Hotel. The project has a target of £190,000 to enhance the environment on wards 50/51 that specialise in care for the elderly. Assist in their privacy and dignity at all times whilst in the care of the Countess of Chester Hospital, allowing independence and a sense of self during what can be a long and worrying stay in hospital.

The project will provide an area to walk in – **Memory Lane** – that will be stimulating for patients and have a lounge and a garden at the end of it. There is not a lot of quiet space in the busy Countess Hospital and this project will create areas of quiet and peace.

The project has already reached the £10,000 mark with plenty of activities planned for 2018. Staffs from wards 50 and 51 have been getting involved in the fundraising with a Christmas Tombola planned for the start of December. Jake Poole age 14 and his friend Dan Goldston, age 15, from Neston High decided to support the Memory Lane project by dressing up as Santa's and wakeboarding in Benllech Bay, Anglesey! Cambridge Rd Primary School has also joined the fundraising with a mad hair day and a cake sale to date.

The Memory Lane Project has received lots of support from the Chester Business Community with The Mollington Banastre Hotel, Zodeq, Radfield Home Care, 1539 Restaurant, Sanctuary Care – Upton Dene and Goodwin's Restaurant all naming the project as their Charity of the Year. You will see guys from Zodeq biking and running (If anyone is interested in running the Chester Half Marathon on October 7th 2018 for the Memory Lane Project please get in touch) to raise funds along with some unique special offers from Goodwin's Restaurant and 1539 to benefit the project.

Paul Cooney Managing Director from Zodeq said of the support

*"We are very proud to be supporting this fantastic charity which carries out wonderful work within the local community."*

As well as the businesses committed to supporting the project the fundraising team have an actioned packed calendar of events programmed in over the next 12 months to raise money for this project. 2018 will see the return of the popular Ladies Laughter Lunch at The Chester Grosvenor Hotel on March 10th 2018 for the Memory Lane project supported by Taittinger, Upton Dene Sanctuary Care and Hays Travel Chester.

New for the Countess Charity is 'The Countess Charity Challenge' to take place at the Countess in March 2018 supported by Radfield Home Care. Teams of 5

are asked to raise a minimum of £500 sponsorship money and will compete in a range of physical and mental activities such as Total Wipeout, Toxic Drop, Segway Ice Bucket Challenge, Hungry Hippo's and Rollerball, with Football darts as the deciding game for the Countess Charity Challenge Champions!

Hanna Clarke Corporate and Events Fundraising Manager at the Countess Charity is thrilled with the support from local businesses

*"I am thrilled with the support we have had from local businesses for this project. Care of the elderly impacts many individuals so being able to have positive impact on this is fantastic"*

For further details on the Memory Lane project, how you can get involved with the Memory Lane project, naming it as your Charity of the Year for 2018/19 or details on the events mentioned please contact Hanna Clarke, Corporate and Events Manager at the Countess Charity on **01244 366240 / hannaclarke@nhs.net**







# COMMUNITY NEWS

Have Your Say - Tell Us & We'll Print It!  
Email us @: [info@love-chester.com](mailto:info@love-chester.com)



Chester Operatic Society presents,

## *Singin' in the Rain*



## SINGIN' IN THE RAIN

**8th to 10th February 2018**

Storyhouse, Hunter Street, Chester, CH1 2AR  
01244 409113 [www.storyhouse.com](http://www.storyhouse.com)

*Set in 1920s Hollywood, this light-hearted romantic comedy focuses on the trials and tribulations of two movie actors during the transition from silent pictures to the early days of sound film.*

*With sparkling songs such as "Make 'Em Laugh" and the unforgettable "Singin' in the Rain", and some spectacular dance numbers, this show is sure to send you home with your feet tapping and yearning for the next thunderstorm.*

Performances at 7.30 pm plus 2.30 pm on 10th February  
Tickets cost £20 (£16 matinee) and £10 for under 12s.

## Bikes are not just for *Christmas...*



Cycling has seen a leap in popularity in recent years, following successes in the Olympics and the Tour de France. But it does not all have to be about speed, lycra and super lightweight bikes. It is a very convenient means of travelling locally, it is free, it improves your health and parking is a doddle! There is also the other side of cycling; exploring country lanes, finding cafe's and hidden surprises on your doorstep, coming face to face with wildlife. In Chester we have a wealth of lanes and destinations, and a local cycling club that can take you there. Chester CTC (part of Cycling UK) meet twice a month for Sunday rides, once a month for a ladies only Saturday morning ride, Summer Wednesday evening rides and other events in between, such as treasure hunt and freewheeling competitions. And we meet up and ride all year; so if you get a bike or new cycling stuff for Christmas, why not come along and meet us? In 2017 we have been to Eastham Ferry, Jodrell Bank, Maeshafn, Northwich, Erddig, Willington to name but a few; ladies rides have been to, amongst others, Wepre Park, Cotebrook, Tarporley and a weekend away to Kirkby Stephen.

Facebook - Chester Cycle Touring Club or Chester Fabulous Ladies Blogs -

[www.chestertctc.blogspot.com](http://www.chestertctc.blogspot.com) or [www.chesterfabulousladies.blogspot.com](http://www.chesterfabulousladies.blogspot.com)

Twitter - @fabulous\_ladies

THE HAVEN  
HOME INTERIORS  
*Online & In your home*

# Super SALE



selected  
**HALF PRICE**  
furniture

**20% OFF**  
Christmas



**30% OFF**  
selected giftware

**Ex-Display**  
bargains



[www.havenfurniture.co.uk](http://www.havenfurniture.co.uk)

Come Visit Us @ Premier Plants | Ledsham Lane | CH66 0NB

0333 990 0138 | [advice@havenfurniture.co.uk](mailto:advice@havenfurniture.co.uk)

## Ask about our great new deals to advertise in 2018! Affordable advertising!

**CHEAPER ADVERTISING RATES THAN MOST NEWSPAPERS & OTHER LOCAL MAGAZINES!**

**FREE DESIGN OF YOUR ADVERT! FREE PHOTOGRAPHY!**

**Love Chester** the magazine of choice for all **local** businesses

Love Chester Magazine is delivered through:- Busy local high streets, our advertisers, local businesses, golf clubs, business centres, supermarkets, staff rooms, hotels, libraries, social clubs, garden centres, butchers, cafes, restaurants, bars, hairdressers, beauty salons, DIY stores, solicitors, opticians, take aways, churches, doctors, dentists, hospitals, council offices and office buildings with lots of staff!

We deliver to the following areas:- Chester City Centre, Handbridge, Boughton, Huntington, Christleton, Littleton, Vicars Cross, Hoole, Bache, Upton, Newton, Moston, Mollington, Blacon, Saughall, Saltney, Guilden Sutton, Mickle Trafford, Rowton, Waverton, Chester business park and Sealand Industrial Estate.

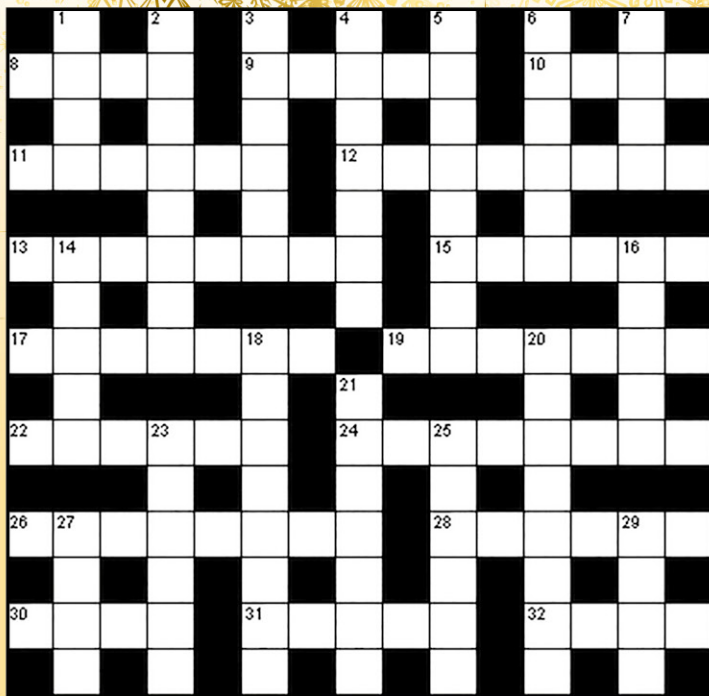
**[www.love-chester.com](http://www.love-chester.com)**  

**ONCE YOU HAVE READ ME PLEASE PASS ME ON TO SOMEONE ELSE!**

Call: **0151 513 1279** or email: **[info@love-chester.com](mailto:info@love-chester.com)**



# PUZZLE CORNER



## Quick Crossword Puzzle

### Down

1. Border (4)
2. Fight (8)
3. Photographic necessity (6)
4. Cattlemen (7)
5. Speed (8)
6. Come up with (6)
7. Discover (4)
14. Open, as a bottle (5)
16. Basic belief (5)
18. A type of curved shape (8)
20. A black candy (8)
21. Outcomes (7)
23. Eluted (6)
25. Dwell (6)
27. Affirm (4)
29. Sponge (4)

### Across

8. Modify (4)
9. Positive pole (5)
10. Leave out (4)
11. Perplex (6)
12. Encirclement (8)
13. Breaking and entering (8)
15. Ascribe (6)
17. Not an art (7)
19. Violent rotating windstorm (7)
22. Scant (6)
24. Fury (8)
26. Marine crustacean (8)
28. Termagants (6)

30. Learning method (4)
31. Well-known (5)
32. Make do (4)

## 9 LETTER CUBE PUZZLE

**DAZUAHORS**

From the nine-letter word block puzzle list all possible matching words!

A minimum of 4 letters must be used to create a word, including the centre letter in each word. Target: 20 words!

Solutions can be found on our website:  
**[www.love-chester.com](http://www.love-chester.com)**

|   |   |   |
|---|---|---|
| D | A | Z |
| U | A | H |
| O | R | S |

# The Live Rooms

The Live Rooms, Station Road, Chester, CH1 3DR  
[www.theliverooms.com/events/](http://www.theliverooms.com/events/)



YOUR GUIDE TO  
WHAT'S ON

**2018**  
**JANUARY**

## This is Quadrophenia

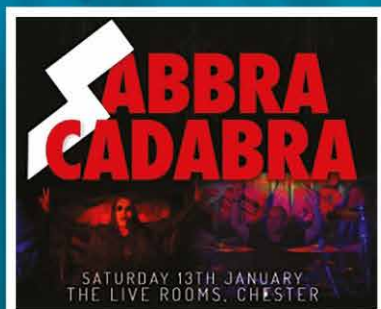
All the hits from the iconic movie



Sat 6th January - 7pm, £11

## Sabbara Cadabra Tribute to Black Sabbath

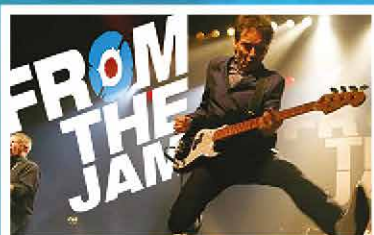
The tribute to classic Black Sabbath,  
featuring the absolute best of  
Ozzy Osbourne-era Sabbath.



Sat 13th January - 7pm, £10

## From The Jam feat Bruce Foxton

All the hits from The Jam



Thurs 18th January - 7pm, £21

## Livewire The AC/DC Show

The unique six-man tribute to rock  
music's greatest band AC/DC



Sat 20th January - 7pm, £15

## Huey Morgan - NYC Block Party



Sat 6th January - 9pm, £12-16

The Live Rooms is Chester's newest and largest independent live music venue and nightclub. Our main room has hosted some of the biggest names in music from a diverse range of genres, whilst our side room provides an ideal space for smaller, more intimate shows.

34 There is also an upstairs area which features a balcony overlooking the main room, a VIP bar and numerous seating areas.

Times and dates may change subject to artists.





**We supply and install coloured glass splashbacks.**

**\*\*Coming soon new sparkle and marble effects\*\***



## BUILDING

*We understand the importance of achieving a customers vision and needs.*

*Every project is completed to the highest quality and customer satisfaction is imperative.*

*We aim to give customers confidence that we will keep disruption to a minimum and always work within a safe, clean and tidy environment.*

## GLAZING

*We are professional installers of windows, doors, bi folds and frameless glass extensions.*

*Elliott Build & Glaze Ltd is a Fensa registered company and we are able to provide a 10 year insurance backed guarantee.*

## PLANNING

*From first contact with the customer to completion of the project, Elliott Build & Glaze Ltd can provide all services required to meet your needs, from full architectural design to the final fitting of the flooring. We aim make this experience as enjoyable and stress free as possible.*



**T: 0151 336 6925**



**[www.elliottbuildandglazeld.co.uk](http://www.elliottbuildandglazeld.co.uk)**

Email: [elliottbuildandglazeld@live.com](mailto:elliottbuildandglazeld@live.com)

Elliott Build & Glaze Ltd is a trading name of S R Elliott Build & Glaze Ltd.

# Your chance to create a new smile.

## A new approach to dentures.

Do your dentures cause:

- Frequent embarrassment?
- Difficulty speaking?
- Food restrictions?
- Sore spots and pain?

Our experts can help with our discreet personal denture services.

What we do:

- The very best cosmetic dentures
- Implant retained dentures
- New dentures in 24hrs
- Relines to old dentures
- Additions to existing dentures

We have over 25 years experience in producing beautiful natural looking smiles.

 **Smiles & More**  
Denture clinics

Smiles By Design, 9 St John Street, Chester, CH1 1DA

**Tel: 01244 566118**

**[www.smilesandmore.co.uk](http://www.smilesandmore.co.uk)**

"My lovely new teeth look so natural. Everyone says they can't tell I wear dentures"

Call now for a **FREE** consultation

