

# LOVE Chester

The Monthly Business & Community Magazine

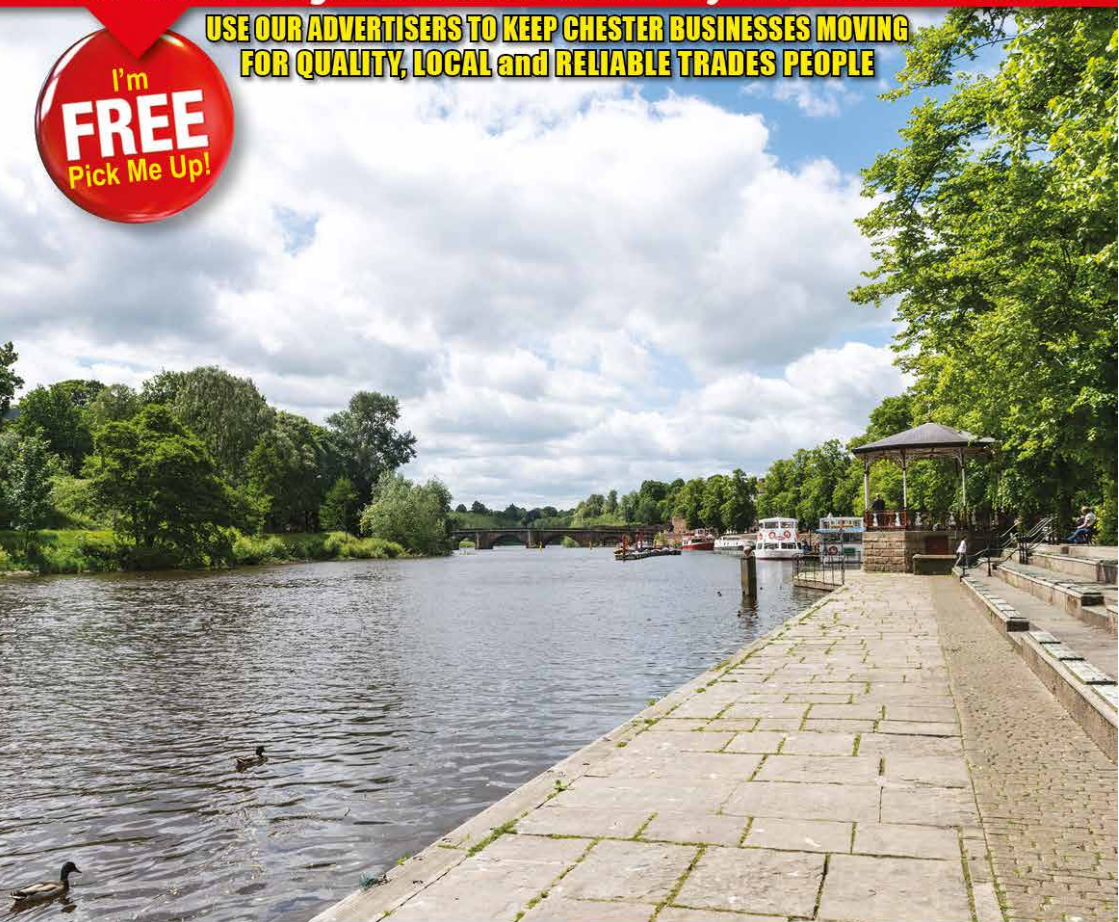


ROTARY MEMBERS

September 2017  
Issue 7

Your **LOCAL** magazine delivered monthly in & around Chester

USE OUR ADVERTISERS TO KEEP CHESTER BUSINESSES MOVING  
FOR QUALITY, LOCAL and RELIABLE TRADES PEOPLE



[www.love-chester.com](http://www.love-chester.com)  

ONCE YOU HAVE READ ME PLEASE PASS ME ON TO SOMEONE ELSE!

Call: **0151 513 1279** or email: **info@love-chester.com**



**We are now open**

**SUNDAY** 9-6 pm

**MONDAY** 9-6 pm

**TUESDAY** 9-6 pm

**LATE NIGHTS**

**WEDNESDAY** 9-9 pm

**THURSDAY** 9-9 pm

**FRIDAY** 9-9 pm

**SATURDAY** 9-6 pm

Cut & Finish **£20.00**

**Colours**

Full head highlights **£50.00**

including cut & finish

Half head highlights **£40.00**

including cut & finish

# **PERNICKETY HAIR CO**

## **0151 355 3608**

**L'ORÉAL**  
PARIS

**JOICO**  
THE ART OF HEALTHY HAIR

**HEAD  
CANDY**

**ghd**

**FUDGE**

49 Chester Road, Whitby, Wirral



# Loving the room.

With **0% finance** available over three years, it's never been more affordable to get more room for everything you love with Sliderobes.



Call or go online now to arrange your  
**FREE AT HOME CONSULTATION**

VISIT OUR SHOWROOM  
**WIRRAL 0151 334 2121**

Unit 3 Welton Road, Croft Trade Park,  
Bromborough, Wirral, Merseyside, CH62 3PQ

**SLIDEROBES®**

SLIDEROBES.CO.UK

# WHAT'S IN THIS MONTHS LOVE CHESTER MAGAZINE

8



**What's Happening At Our Zoo**

16



**In Florida Everyone Believes In Magic**

20



**Chester Rambling & Hill Walking**

30



**Auto Review by Tony Yates**

34



**September Tasks In The Garden**

## Love Chester

The Local Magazine for Businesses in and around Cheshire.

**What's Happening At Our Zoo Do You Know?**

**Community News - Have Your Say**

**In Florida Everyone Believes In Magic**

**Chester Rambling & Hill Walking**

**Spilt Milk by Cole Joseph**

**2017 Upcoming Events in Chester**

**The Live Rooms - Gig Guide**

**Auto Review by Tony Yates**

**Support Local Charities**

**September Tasks In The Garden**

**Support Local Charities**

**Puzzle Corner**

**Our Advertising Rates**

**Support Local Charities**

8  
12  
14  
16  
20  
26  
28  
29  
30  
33  
34  
39  
40  
41  
42



**Dear Friends,**

First of all we would like to say a **BIG** thank you to all of our regular advertisers - we value your loyalty, and a warm welcome to our new advertisers too!

We would like to wish all the

children going back to school and high school good luck, exciting times ahead.

Chester Zoo are taking part in 'World Rhino Day' on the 22nd September, if you can go to the zoo on this day the Zoo Ranger team will be on hand to help celebrate all things rhino!

Don't forget to let our advertisers know you saw them in Love Chester magazine, without them there wouldn't be a magazine, so it's important information!

You can keep up to date with us and all our magazines online, FB and Twitter

Keep up to date with us on facebook and our new facebook group, twitter & visit us at:

**[www.love-chester.com](http://www.love-chester.com)**

We'd like you to meet the newest member of Love Chester magazine "BUDDY" the PUG.

**Best Wishes  
Maxine & Mike**



**Cover Photograph :**

**Chester River Dee and Bandstand**

Circulation of this **FREE** magazine is distributed to Chester and its surrounding villages.

Love Chester Magazine Limited Registered Office: 1st Floor 12 Church Road, Gatley, Cheadle, Cheshire, SK8 4NQ

**Company Number: 10588054**

"Love Chester" is produced by an independent organisation; which is not connected to any other organisation, publication or groups. All material is copyrighted and no part of this publication may be reproduced or transmitted without the written permission of the copyright holder.

Please note that we do not endorse any products or services of any advertisers. All advertisements and their content are accepted in good faith. Responsibility for copyright and the accuracy of the information provided lies with the advertiser.





# Go over the top in the kitchen



[trend-transformations.co.uk](http://trend-transformations.co.uk)

**UPDATE  
WITHOUT  
THE WAIT**

**REPLACEMENT  
TOPS  
& DOORS  
CUSTOM MADE**

You can give your kitchen a brand new look without having to go through all of the pain and disruption of ripping out the old one. Our beautiful quartz, granite, recycled glass and porcelain worktops fit straight on top of your existing surfaces to give you the luxurious finish you've always wanted.

Add a splashback, replacement doors and drawer fronts and hey presto, you've transformed your kitchen in days, not weeks. We can even update your sink, taps and appliances to match.

Visit our showroom to find out more. Please check our website for opening hours at each location:

**Ellesmere Port Showroom:**

Unit 17/18, Junction 8 Business Park,  
Roscliffe Road, Ellesmere Port CH65 5AA

**Speke Display:**

Dobbies Garden Centre, Speke Hall Av,  
Speke, Liverpool, Merseyside L24 1UX

**Burton Display:**

Gordale Garden Centre, Chester High Rd,  
Burton, South Wirral, Chester CH64 8TF

0151 434 4880

[trend-transformations.co.uk](http://trend-transformations.co.uk)



**LIVING  
FLOORS**  
*& more...*

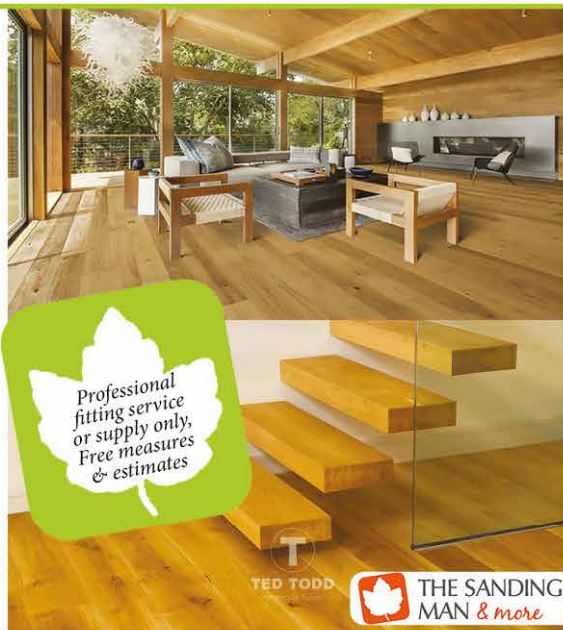
## Wood Floor Specialists

A Family Business, Est 1997

**Ted Todd Flooring**  
**Quickstep**  
**Livyn Luxury Vinyl**  
**Floor Sanding**

**Opening Hours**

*Monday - Saturday*



Unit 1B, Chester Trade Park, Bumpers Lane, Sealand CH1 4LT  
Phone 01244 382416 | [www.living-floors.co.uk](http://www.living-floors.co.uk) | [www.thesandingman.com](http://www.thesandingman.com)



## LIVING PLANTATION SHUTTERS & BLINDS

A Family Business, Est 1997

All types of made to measure  
blinds supplied

**CONSERVATORY SAIL BLINDS**

**VENETIAN**

**ROLLER**

**VERTICAL**

**ROMAN**

**SENSES**

**Opening Hours**

*Monday - Saturday*



Unit 1B, Chester Trade Park, Bumpers Lane, Sealand CH1 4LT  
Phone 01244 382416 | [www.livingshuttersandblinds.com](http://www.livingshuttersandblinds.com)





# Blueberry

Learning & Development

## ADULT LEISURE CLASSES

Blueberry offers a high quality but friendly learning experience.  
All courses are delivered by experienced and fully qualified tutors.  
Venues in Chester and Ellesmere Port.

### COOKERY

Chinese cookery  
Indian cookery  
Cook around the world

### BAKING

Great British baking  
Cake decorating  
Sugar wired flowers

### CRAFTS

Jewellery making  
Creative writing  
Flower arranging

### LANGUAGES CLASSES

	Beginners	Year 2	Year 3
Spanish	✓	✓	✓
German	✓	✓	✓
French	✓	✓	✓
Italian	✓	✓	✓
Mandarin	✓		

### ART

Drawing  
Art for beginners  
Water colour painting  
Oil & Acrylic Paint

### PHOTOGRAPHY

Plus many more  
quality classes

**Tel:** 07532 733332

**Email:** [enquiries@blueberrylearning.co.uk](mailto:enquiries@blueberrylearning.co.uk)

**[www.blueberrylearning.co.uk](http://www.blueberrylearning.co.uk)**



# OUR ZOO

What's  
happening  
at Chester Zoo.

## Tiny Sengi twins born at Chester Zoo

Ping and Pong - Sengi twins.



- **New pair are smaller than ping pong balls**
- **Amazing mini-mammals are closely related to elephants, armadillos and manatees**
- **Tiny creatures can reach speeds of up to 18mph**
- **Latest zoo arrivals helping conservationists learn more about fascinating species**

**Seeing double! Meet Chester Zoo's newborn (and super-cute) sengi twins, Ping and Pong.**

Two adorable African sengis have been born at Chester Zoo.

The tiny twins - also known as round-eared elephant shrews - have been nicknamed Ping and Pong by zookeepers, as they are currently no bigger than table tennis balls.

Sengis grow to a maximum size of just four inches (10cm) and weigh no more than 45 grams. But, despite their small stature, the animals have an incredible genetic link to manatees, armadillos and elephants.





## OUR LATEST NEWS & EVENTS

Dave White, team manager of small mammals, said:

*"They may be tiny but our new sengi duo are hugely fascinating creatures, whose closest living relative is eight thousand times their size. They were once thought to be linked to the shrew but their genetic makeup is actually closer to that of an elephant - the giveaway is their amazing trunk-like snout."*

*"Sengis are extremely energetic little critters and have a top speed of 18mph. If scaled up, they would actually be twice as quick as the world's fastest land mammal – the cheetah. They're incredibly charismatic and one of the very few mammals that pair up for life."*

*"Breeding these small mammals here gives us a rare opportunity to learn more intriguing details about their reproductive ecology and what makes these remarkable animals tick. Collecting information like this, and developing skills along the way, can be vital when it comes to assisting with the conservation of similar, highly threatened species, in the wild."*

Round-eared sengis are native to Botswana, Namibia and South Africa where they are found in a range of habitats including deserts, forests and savannahs.

There are nineteen different species of sengi, most of which very little is known. A new species was discovered by conservationists working in Namibia as recently as 2014.

Chester Zoo's sengis can be found in its Secret World of the Okapi habitat.





- Marine Fish
- Corals
- Tropical Fish
- Coldwater Fish
- Massive range of tanks & accessories

- Reptiles •
- Amphibians •
- Tarantulas & Inverts •
- Fresh Live & Frozen Foods •
- Huge range of housing & accessories •

Unit 68 Deeside Industrial Estate, Zone 1, Welsh Road, Deeside, Flintshire CH5 2LR  
 Tel: 01244 280880 | [www.contactpets.co.uk](http://www.contactpets.co.uk) | [enquiries@contactpets.co.uk](mailto:enquiries@contactpets.co.uk)

## Manor Park Residential Home

Established since 1985

Personalised Residential, Respite & Day Care Services



Manor Park is close to the River Dee dividing the villages of Holt in Wales, and Farndon in England, both picturesque and historical.

- Specialising in Care for the Elderly with Mental Health Problems
- State of the Art Nurse Call System
- Family run Home with locally appointed experienced staff
- Regular Indoor and Outdoor Activities and Visits, Manor Park is in close proximity to local shops, deli restaurants and pubs, all with easy wheelchair access
- All meals freshly cooked with a 5 Star Rating



To find out more, why not contact or call in and visit with one of our Management Team – Karen, Tracy or Nicki  
 Green Street, Holt, Wrexham LL13 9JF or e-mail us at: [manorparkhome@yahoo.com](mailto:manorparkhome@yahoo.com)

10 Tel: 01829 270318 find us on facebook





# cheshire joinery *services ltd*

Finest bespoke hardwood  
windows and doors



#### SUMMER SIZZLER

OUR OWN HARDWOOD BRIQUETTES  
ARE £2 PER BAG FOR 20 BAGS OR MORE

Unit 1b, Barrowmore Estate, Great Barrow CH3 7JA

[www.cheshirejoineryservices.com](http://www.cheshirejoineryservices.com)

[info@cheshirejoineryservices.com](mailto:info@cheshirejoineryservices.com)

01829 741751

# DO YOU KNOW?

1. The average British garden contains over 20,000 slugs and snails.
2. In 2017, a church in Wittenberg, Germany introduced a robot priest, called BlessU-2, that gives blessings.
3. A typical microwave oven uses more electricity keeping its digital clock on standby than it does heating food.
4. In 14th-century England, some children were baptised in cider.
5. The operating cost of GPS is just over \$2 million a day.
6. A Pakistan court banned Valentine's Day celebrations across the country in 2017, since the holiday is not a part of Muslim tradition.
7. Way before the Web, France had Minitel since 1978, an online service that gave its users access to online shopping, search engines, porn and message boards. It reached 25 million users in the 90s, connecting to more than 23,000 services.
8. Inside Singapore's Changi Airport there's a butterfly garden, a rooftop swimming pool and a free 24-hour cinema.
9. When Pope Francis released "peace doves" at the Apostolic Palace in 2014, the doves were immediately attacked by other birds, losing feathers and being driven away as a huge crowd watched.
10. More than twice as many people were guillotined by the Nazis as during the French Revolution.
11. Anyone can become a legal citizen of Dominica, in the Caribbean, for US\$100,000.
12. The Eiffel Tower was inaugurated the same year Nintendo was founded and Adolf Hitler was born: 1889.
13. Disney quietly cut ties with McDonalds in 2006 so as not to be associated with childhood obesity.
14. Rolling luggage wasn't invented until 1970. Initially, stores didn't want to stock it.
15. In 2016, it was discovered that Beyonce's "Empower Women" clothing line was made by women sweat shop labourers working on less than £5 a day.
16. The deaths of those who jumped from the WTC on 9/11 were ruled homicide, not suicide.
17. Warrior ants will sometimes carry their injured comrades back to the nest instead of leaving them to die.



18. The members of Black Sabbath used to have their cocaine flown to them on private planes.
19. To your brain, one sleepless night is the cognitive equivalent of being legally drunk.

20. The first published crossword was called a word-cross.

21. The British pound is the world's oldest currency still in use: it's 1200 years old.



22. During WW2, an Italian doctor prevented Nazis from taking Jewish patients by claiming they suffered the fictitious 'K Syndrome'. He saved 45 lives.

23. Rock star Ozzy Osbourne once joined a Christian protest march against himself outside of one of his concerts.



24. In the UK continues printing and storing its laws on vellum, made from calf or goat-skin.

25. Each square foot of Jackson Pollock's painting "No. 5, 1948" is worth over \$4 million.

26. According to TSA rules, you can get drinks through a U.S. airport security if they're frozen solid.

27. Soccer player Edson Arantes do Nascimento, most known as Pelé, was named after Thomas Edison.

28. Shakespeare and Pocahontas were alive at the same time.



29. Snapchat's mascot has name: Ghostface Chillah.

30. Watermelons contain an ingredient called citrulline that can trigger production of a compound that helps relax the body's blood vessels, just like Viagra.

31. The Burj Khalifa is so tall that residents above the 80th floor have to wait 2 to 3 minutes longer to end Ramadan.

31. Syria had more tourists than Australia in 2010.

32. You have to be a retired letter carrier to live in Nalcrest, Florida. Ironically, the town does not have mail delivery service.

33. Morning sickness in pregnant women has been linked to a significantly reduced risk of suffering a miscarriage, new research has found.

34. The town of Whynot, North Carolina has its name because as residents were arguing over a name for the town, someone stood up and said "Why not name the town Why Not and let's go home?" And so they did.

35. In 1956, a scientist imported African honeybees to South America. Some of them escaped and bred with European honeybees in the wild, giving rise to a hybrid species: killer bees.





# Relive Physiotherapy

Gateway to Health



**Know Pain  
Know Gain**

**Individually  
Tailored Expert  
Physiotherapy**

## Relive Physiotherapy Clinic offers,

- ✓ Back/Neck Pain Physiotherapy
- ✓ Sports Injury Clinic

- ✓ Acupuncture
- ✓ Therapeutic Yoga

Late evenings and weekend appointments available.

Please visit our website for appointments & more

**[www.relivephysiotherapy.co.uk](http://www.relivephysiotherapy.co.uk)**

Please call us to make your appointment

**01244 630750**

Ground Floor, Holly House, Village Road, Christleton, Chester, CH3 7AS  
(Opposite to Ring O' Bells pub)



# STUART HENRY KITCHENS LTD

Multi Award Winning  
family run business with  
30 years experience.

Full 12 unit kitchen with  
appliances and accessories

**for £3500**

Excludes installation

**\*\*LIMITED TIME ONLY\*\***

Recently fitted by us  
for Mr & Mrs H  
in Bromborough



1 The Rake Precinct, Bromborough, Wirral CH62 7AD

Phone 0151 334 7775 | [www.stuarthenrykitchens.co.uk](http://www.stuarthenrykitchens.co.uk)





# COMMUNITY NEWS

Have Your Say - Tell Us & We'll Print It!

Email us @: [info@love-chester.com](mailto:info@love-chester.com)

## BONNIE & CLYDE - STORYHOUSE

7th to 9th September 2017

Storyhouse, Hunter Street, Chester, CH1 2AR

When Bonnie and Clyde meet, their mutual cravings for excitement and fame immediately set them on a mission to chase their dreams. Their bold and reckless behaviour turns the young lovers' thrilling adventure into a downward spiral, with the lovers resorting to robbery and murder to survive. As the infamous duo's fame grows bigger, their inevitable end draws nearer. Set against the backdrop of the great depression, Chester Operatic Society present a bold and thrilling production showing another side to America's most infamous partners in crime.

Performances at 7.30 pm each night, with a matinee at 2.30 pm on 9th September. Tickets cost £16. To book tickets, please go to [www.storyhouse.com/boxoffice](http://www.storyhouse.com/boxoffice), call 01244 409113, visit Storyhouse, or visit Chester Visitor Information Centre.

.....

23rd September 7 p.m.

**THE CITY OF CHESTER**  
**MALE VOICE CHOIR**

In Concert With

**THE HOUGHTON**  
**WEAVERS**

**'KEEP FOLK SMILING'**

=====

ST JOHN'S CHURCH, CHESTER CH1 1SN  
TICKETS £12 ADULTS £6 UNDER 18'S  
from [www.chestermalevoice.com](http://www.chestermalevoice.com)

Enquiries call 07894 509529

.....

REG CHARITY NO. 501874

**LIKE  
TO  
SING?**



**Chester Male Voice Choir**  
invites you to a

**DROP IN OPEN NIGHT**

Between 7.30 & 9 pm  
Wednesday 6th September  
Hoole Methodist Church Hall,  
Hamilton Street, Hoole, Chester.

Come along to a very informal evening and meet us.  
If you like to socialise, sing and have fun while supporting good causes and making a fantastic sound you won't be disappointed.  
We'll tell you all about our choir and show you what we do.  
We're a friendly crew so drop in and have a brew.

Visit our website for more information [www.chestermalevoice.com](http://www.chestermalevoice.com)  
or call John on 07894 509529





Sanctuary Care

*'Keeping kindness at the heart of our care'*



## Upton Dene Residential and Nursing Home

Residential ☀ Residential Dementia ☀ Nursing



### *Silver Sunday Celebrations*

Sunday 1 October 2017, 2pm to 4pm

Join us at our free event where we will be hosting an afternoon of fun activities, musical entertainment and serving delicious homemade afternoon tea.

Silver Sunday is an annual event we support which celebrates older people and their contributions to our local communities while working to combat loneliness and isolation.

We look forward to seeing you there.

Caldecott Close, Upton, Chester CH2 1FD

Tel: 01244 434 310





# IN FLORIDA

## Everyone believes in magic

**Orlando**

**1st June 2018**

**11 Nights at the Rosen Inn at Pointe Orlando  
flying from Manchester**

**from  
£699 per person**  
(price based on 2 Adults and 2 Children)

Perhaps it's the impossibly beautiful beaches of Miami and the Gulf Coast. Or maybe it's the year-round sunshine, or of course, *those* world-class theme parks. Even the most cynical are captivated by Florida. This pocket of paradise is truly infectious.

### Miami

Famous, photogenic Miami is a major international city with Latin American flare, Art Deco architecture, beaches for days and world class nightlife. There's entertaining excess here, to be sure, but look deeper and you will find the cities enduring pulse in historic neighbourhoods like Coconut Grove and Little Havana plus cultural and food scenes that are second to none.

### Florida Beaches

It's called the Sunshine state for a good reason, if films, postcards and travel brochures have taught us anything at all, it is what a perfect beach looks like. The whitest possible sand, warm to the touch, clear azure oceans mirroring the endless sky. Some of the world's finest beaches can be found here, including those at Clearwater and St Petersburg – or St Pete's as the latter is now officially known. A natural playground for outdoor enthusiasts, there are water sports in abundance, beachcombing on quiet offshore islands, volleyball, horse riding, cycling and golfing.

### Orlando

From earth-shuddering rollercoaster's to water parks the size of lakes, Orlando is known as the theme park capital of the world for all the right reasons. Nowhere creates magical moments like Walt Disney Resort, and we should know. We have been helping families have dream Disney holidays since before the Little Mermaid first made a splash. Universal Orlando Resort, with its three amazing theme parks - Universal Studios Florida, Universal Islands of Adventure and the newly opened Universal's Volcano Bay water theme park, spectacular on-site hotels and more, it's days and nights of endless fun for every member of the family. SeaWorld and Busch Gardens' offer the perfect blend of amazing wildlife exhibits and stomach-swooping thrill rides whilst Discovery Cove is a refined all-inclusive day resort. Aquatica is SeaWorld's super-soaking waterpark which is also a firm favourite.

Once you have spent your days in the parks Orlando isn't done entertaining you and your tribe. With world class shopping malls to roam, alligators to spot from roaring airboats, dolphin encounters and amazing cuisine to sample you will be making memories that last a life time.





# WHEN ADVENTURE CALLS

*Don't let it go to voicemail*

Life is short, the world is wide, the time is now so seize the moment and book your next holiday or cruise with us.

0344 557 4315

[chester@virginholidays.com](mailto:chester@virginholidays.com)

2nd Floor Debenhams Chester, 34-40 Eastgate Street, CH1 1LF

SEIZE THE HOLIDAY

 **HOLIDAYS**

## FINALISTS IN TOP 100 BEST PARKS



### 5 Star Holiday home ownership & touring parks

- Family run holiday park in Mid Wales
- Holiday home ownership
- 30 Hard-standing Super pitches for touring
- Half mile of riverbank fishing (River Severn)
- Relaxing on-park atmosphere
- Extensive walking & cycling
- Nearby golf courses

- Family run touring park in Ludlow, Shropshire
- 50 Hard-standing Super pitches for touring
- Half mile of riverbank fishing (River Teme)
- Extensive dog walk and exercise area
- Public footpaths adjacent to park
- Relaxing on-park atmosphere
- Nearby golf courses

#### Smithy Park

Abermule, Newtown, Montgomery  
Powys SY15 6ND • 01686 630657  
[www.smithypark.co.uk](http://www.smithypark.co.uk)

#### Westbrook Park

Lynch Lane, Little Hereford, Ludlow  
Shropshire SY8 4AU • 01584 711280  
[www.westbrookpark.co.uk](http://www.westbrookpark.co.uk)

 part of the Bestparks family

## Justfencing

CHESHIRE



**Fencing**

**Gates**

**Decking**

**Paths & Patios**

**Sheds & Log Stores**

**Tree & Hedge Cutting**

Installers of quality timber fencing

FREE NO OBLIGATION QUOTES

t: 0151 336 7598 / 01244 470 120

m: 07957 349244

[www.justfencingcheshire.co.uk](http://www.justfencingcheshire.co.uk)

## LPW PLUMBING SERVICES

**Your Local Emergency Plumber**

- 24 HOUR PLUMBING
- ALL GENERAL PLUMBING REPAIRS UNDERTAKEN
- PLUMBING MAINTENANCE
- ALL BLOCKAGES
- BATHROOM DESIGN & INSTALLATION
- ALL WORK FULLY INSURED

WIAPS - Water Industry Approved Plumbing Scheme

Call Lawrence on:

**07738 462315**

01928 898375 (After 6pm)

[www.lpwplumbingservices.co.uk](http://www.lpwplumbingservices.co.uk)

[info@lpwplumbingservices.co.uk](mailto:info@lpwplumbingservices.co.uk)





# Wirral Wetrooms

Bespoke Bathrooms & En-suites

We design, supply & install  
bathrooms & wetrooms



At Wirral Wetrooms, we pride ourselves in being one of the few showrooms in the UK who design, install and take full responsibility of all aspects of your bathroom project.

We bring attention to detail to create the perfect blend of aesthetics and functionality.

Wirral Wetrooms is the perfect answer in response to the growing demand for a tailored bathroom.

Offering a range of sophisticated international products to produce a bathroom unique to you, the customer, which will look as good in 10 years time as it does on day one.

At Wirral Wetrooms we never forget that we don't choose you - you choose us!

*Your complete satisfaction  
is our main priority!*

5 Thingwall Road, Irby  
Wirral CH61 3UA

Tel 0151 648 5564

Open Mon - Sat  
8.30am - 5pm



Free Design | Supply | Installation

Vitra<sup>®</sup> crosswater<sup>®</sup>  
digital

GROHE

mira

Villeroy & Boch

mira  
SHOWERS

Ab

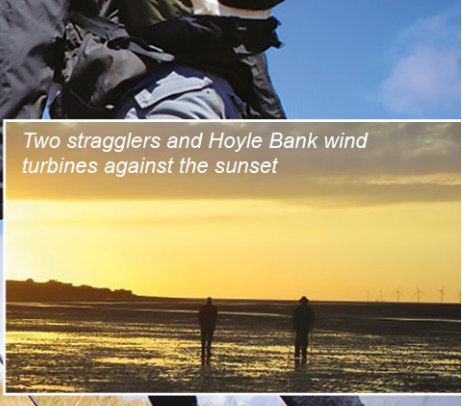
*Style without compromise*

# Wirral Wetrooms

Bespoke Bathrooms & En-suites  
[www.wirralwetroom.co.uk](http://www.wirralwetroom.co.uk)



# Fancy a walk?



Two stragglers and Hoyle Bank wind turbines against the sunset

Highlights at low tide – an evening walk to Hilbre Island At Chester Rambling and Hill Walking Club, we're nearing the end of our programme of summer Tuesday evening walks, and looking back, most of these have been enjoyed in very clement weather. Grey sky and drizzly rain on the night of our Hilbre Island trek earlier this summer hadn't looked promising, however.

Given the grim weather, we turned up at West Kirby with stout shoes and raincoats donned, and an air of excitement hovering. I'd never previously visited this small group of islands in the Dee Estuary, although they are only 25 miles away from Chester. Untrusting of tidal waters, I had always been wary of the crossing to Hilbre, but the opportunity to join a walk led by one of our club's experienced leaders was too good to miss. Most of our group had been to the islands before, and those few of us who were about to make our maiden crossing were buzzing with anticipation, cameras clutched in the hope of seeing grey seals or, less likely given the weather, a pleasing sunset.

The archipelago is made up of Little Eye, Little Hilbre (or Middle Eye), and Hilbre Island. From West Kirby it's a mere two miles across the rippled sands of the Estuary to the islands, which are cut off at high tide. The walk itself is not in the least arduous, but involves the occasional paddle through shallow pools left behind after tidal retreat. The recommended route takes you round the back of Little Eye. Up on the rocks here sits a curious structure made up of a T-shaped slab of concrete wedged into the natural red sandstone, and no-one seems to know what this is! Once beyond Little Eye, it's some distance across the sands to Middle Eye, which is barely 100 yards from its larger neighbour, Hilbre Island, though the two are completely separated when the tide is in. There is a curious mix of geology here - mainly red sandstone and silt, with erosion and tilting creating a fascinating shoreline for those of us with an interest in all things geographical! For nature lovers, too, as this area of the estuary is a protected nature reserve and a wildlife haven. We thought we could hear seals, though they were too shy to come and greet us. Apparently they bask on the nearby sandbanks, returning to the shore only when the tide is in and human visitors have long departed! Scouring the sandbanks through binoculars produced no sightings of these beautiful elusive creatures. The seabirds, however, were numerous.

There are a few houses on the main island, but nobody lives here permanently anymore. The place has a strong sense of remoteness, despite its close proximity to the Wirral and the major city of Liverpool slightly further north. Pilgrims of old visited the islands through the centuries, and an aura of spirituality still lingers today. A glance at the OS map of Hilbre reveals the word 'Churche' in ancient lettering. Drawn by anything antiquarian, I was disappointed to spot nothing

relating to this bygone place of worship as we walked briskly along the track to the defunct lifeboat station on the far tip of the island. Gathered in this now roofless building where long ago boats would have cast off on their safety missions, we stood and gazed in awe across Liverpool Bay, watching as the dark clouds dispersed and a glorious sunset began to unfold. Against this natural, stunning backdrop, the wind turbines at Hoyle Bank on the skyline should have appeared intrusive and ugly. Curiously, they added a stark beauty of their own. We were mesmerised.

Our time at Hilbre was limited, and after too short a time, we began our walk back across the damp sands. This was when the highlight of the trip manifested itself, for, turning back every moment or so, a now magnificent sunset met our eyes.

I may have missed out on the seals and probably much of the island's history on this short trip, but I will return to explore again another day. After first consulting the tide tables, of course!

To find out about tide times and the recommended route across, visit:

<https://www.tidetimes.org.uk/hilbre-island-tide-times> and  
<http://www.deeestuary.co.uk/hilbre/plan.htm>

Our website is: [www.chesterwalkingclub.com](http://www.chesterwalkingclub.com)

## CHESTER RAMBLING & HILL WALKING CLUB

We are a Chester-based walking club, offering up to 3 grades of walks on Sundays, and alternate Wednesdays, and a programme of short summer rambles on Tuesday evenings. The summer season also sees a flurry of camping activity, when we pack up our tents, hook up the caravans, book B & B's and cottages, and head off to destinations slightly further afield for a few days.

Led by experienced leaders, our Sunday and Wednesday walks last approx 6 hours, so bring picnic, flask and water. These hikes cover Snowdonia and North Wales, Cheshire, Shropshire, Lancashire and Derbyshire. Sorry - no dogs or under 18s allowed on our walks.

The club runs mid-week social evenings during the winter, including supper evenings, quiz nights and the ever popular Christmas party! Why not come and join us on a trial basis without paying the fee?

Find out more by emailing: [chesramclub@yahoo.com](mailto:chesramclub@yahoo.com) or head over to our website for more details:  
[www.chesterwalkingclub.com](http://www.chesterwalkingclub.com)



ZevTech UK Ltd  
8 Water Street  
Liverpool  
L2 0RD



Telephone: 03333 230 009

ZevTech UK Ltd,  
24th Floor, The Shard  
32 London Bridge St  
London SE1 9SG

## Is your business suffering from poor internet speeds?

We can help your business with guaranteed upload and download speeds.  
Fibre and Wireless connections available.

Business Broadband Connections,  
VoIP, Mobiles, Landlines.

**10% DISCOUNT** - for Love Chester readers




[www.zevtechuk.co.uk](http://www.zevtechuk.co.uk)

Gareth@zevtech.co.uk

# BROWSERS EMPORIUM

[www.browsersemporium.com](http://www.browsersemporium.com)

**It's an Aladdins Cave of Treasures**  
You name it and we've probably got it!



**All types of new & second-hand furniture & fittings to browse under one roof!**  
**From bulbs to lights, door handles to doors & stools to tables!**



Hooton Works, Hooton, Wirral (Junction 5 - M53) off A41 to Chester Next to Corfe's)

**Tel: 0151 328 1467**

Open: Mon-Sat from 10.00am

Sunday 10:30am - 3:30pm



All credit cards accepted



Supplying and representing only the  
best healthcare professionals



Permanent roles



Midwifery



Theatres



Accident &  
emergency



ANP's / ENP's  
RGN'S / RMN's



ITU / HDU



HCA / nursing  
assistants



Non clinical  
administration



Medical &  
surgical wards



# dental solutions

Philip Morrison has provided  
**Life Transformational Dentures** for over 20 years

## What is a Clinical Dental Technician?

A Clinical Dental Technician or CDT is a registered Dental Care Professional who is trained and qualified to offer a range of Denture Services.

## Imagine only you and your CDT know you wear dentures.

Philip Morrison BSc Dip CDT RCS Eng has over 20 years of experience as a dental technician.

A graduate of Manchester University, Philip continued his education and became a Clinical Dental Technician with the Royal College of Surgeons England.



**Call us now 0151 678 9833**

## Do you want the confidence of a natural smile?

Our patients tell us their confidence has been restored due to our professional approach, caring attitude, and attention to detail. We look forward to meeting you and beginning your journey towards a new smile.

## Implant Retained Dentures

Many patients who have chosen to have implants, report they are happy and comfortable for the first time since the loss of their natural teeth.

### Benefits of Implant Retained Dentures

- Confidence when smiling, laughing and talking
- Your chewing ability is restored
- Taste is not compromised, as the palate is not covered
- Suitable even in cases where bone loss has already occurred
- Further bone loss is prevented
- No more loose dentures.

We provide the very best quality of denture care in our warm and welcoming environment, located in the heart of the Wirral.

## Testimonial Implant Retained Denture

“Thank you so much for the service you have given to me. I am so pleased with the final results. My teeth look so natural and just how I wanted them to look. Thank you for all your efforts.”  
Pam -Wirral



**SMILE MAKEOVER**

**JOIN US**

**FREE 30 MINUTE CONSULTATION**

Please contact us for more information or to arrange a free smile consultation with one of our smile advisors.

**0151 678 9833 BOOK YOUR PLACE NOW**

**Dental Solutions Denture Clinic**  
399-399a Upton Road Prenton Wirral CH43 9SE  
e: [info@dentalsolutions.org.uk](mailto:info@dentalsolutions.org.uk) | [www.dentalsolutions.co](http://www.dentalsolutions.co)

# live happy!

## with Slimming World

Exciting new group opportunities around the area (self-employed) members past and present call Laura 07818 674 016. Calling all past and new members - a warm welcome awaits you.

### **MONDAY**

#### **Saltney**

Saltney Tavern  
High Street  
5pm or 7pm  
Tel Laura: 07818 674 016

#### **Newton**

Kingswood  
Mannings Lane South  
Kingsway  
Tel Rebecca: 07341 668729  
9am or 11am or  
Tel Jenny M: 07773 914341  
5pm or 7pm

### **TUESDAY**

#### **Blacon**

Parade Enterprise Centre  
The Parade  
9.30am or 11.30 or  
3pm or 5pm or 7pm  
Tel Chris: 07824 617652

#### **Hooles**

All Saints Church Centre,  
9.30am or 11.30am or 5pm or 7pm  
Tel Ana: 07715 445 765

### **WEDNESDAY**

#### **Blacon**

Melbourne Centre  
Melbourne Road  
7pm Tel Jenny M: 07773 914341

#### **Lache & Handbridge**

The Venue  
Hawthorn Road  
9.30am or 7pm  
Michaele : 07929 047819

#### **Chester**

Chester City Mission  
Hunters Street  
5.30pm or 7.30pm  
Tel Ann: 07907 580198

#### **Tarvin**

Community Centre  
Meadow Close  
9am or 11am or 5pm or 7pm  
Tel Vicki: 07568 070068

#### **Upton**

Royal British Legion  
Heath Road  
8am or 10am or 12noon or 3pm  
or 5pm or 7pm  
Tel Steph Jones: 07506 688868

### **THURSDAY**

#### **Vicars Cross**

United Reform Church  
8am or 10am or 5pm or 7pm  
Tel Debbie: 07525 753776

#### **Blacon**

Bistro at Deva Point  
Blacon Point Road  
5pm  
Tel Karen: 07930 500139

### **FRIDAY**

#### **Chester**

Chester City Mission  
Hunters Street  
9.30am  
Tel Jenny P: 07887 800497

### **SATURDAY**

#### **Chester**

Chester City Mission  
Hunters Street  
8am or 10am  
Tel Jenny P: 07887 800497

   [slimmingworld.co.uk](http://slimmingworld.co.uk)

0344 897 8000

*Slimming*  
WORLD

touching hearts, changing lives



# LOVE FOOD

**Advertise your  
restaurant or bar  
next month in  
Love Chester from  
as little as £30!**

## Indian Cookery Lessons

Learn to make your own authentic Indian meal, fresh and delicious, full of flavours

**LEARN OR GIFT SOMEONE  
A WONDERFUL LIFE SKILL**

**Book NOW for day courses**  
16 Sept, Saturday, 10am-4pm  
14 Oct, Saturday, 10am-4pm

Claremont Farm kitchen, Wirral, CH63 4JB.  
Vegetarian classes also held.



Contact: **SOMA:**  
**07770752053 or 0151-3349352**

Chester Shop  
St. John Street,  
Chester, CH1 1DA

Tel: 01244 348 041

# Zuger's

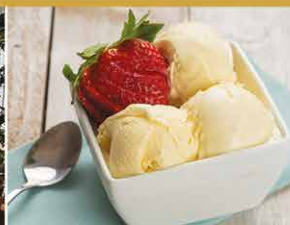
- *New Food & Drink Menu*
- *Outside catering*
- *Private parties*
- *Celebration cakes*
- *Outside courtyard*

Monday - Friday 9:00am - 5:30pm  
Saturday 9:00am - 4:30pm  
Sunday 10:00am - 4:00pm  
Thurs & Fri Evening Tapas/A La Carte  
Last kitchen order 8:30pm

Bromborough Shop  
150 Allport Road, Bromborough,  
Wirral, CH62 6BB

Tel: 0151 334 1904

*Tapas &  
A La Carte Evenings*



**www.zugerstearooms.co.uk**

email: [zugerstearooms.co.uk](mailto:zugerstearooms.co.uk)



25

# MERSEYPRINT

SIGN & PRINT SOLUTIONS

SHOP SIGNS | VAN GRAPHICS & WRAPS  
BUSINESS PRINTING | LARGE FORMAT PRINTING  
PAVEMENT SIGNS | CANVAS GIFTS | WEBSITES



DESIGN | MANUFACTURE | INSTALL



WWW.MERSEYPRINT.CO.UK | INFO@MERSEYPRINT.CO.UK

UNIT 16 FLEXSPACE, NORTH ROAD, ELLESMERE PORT, CH65 1AE | TEL: 0151 272 0097

## Editors Review

### Spilt Milk by Cole Joseph (opposite page)

*The old saying 'give me the child until he is 4 and I will give you the man' speaks volumes when reading this book.*

*The bottom fell out of Cole's world when he was a toddler, he's never understood to this day what had happened to cause such sudden displacement.*

*Years of moving and upheaval follow, leaving a little boy struggling to fit in somewhere. Being regularly bullied by those around him, Cole starts making poor choices and being easily led, which start a terrible downward spiral in his emotional state.*

*Determined to earn some real money, he starts as a 'kitchen porter' at a local hotel. It's real tough dirty work, with arguments flaring between chefs,*

*knives flying and hot spoons wielded.*

*He looks to a more stable environment and joins the navy, bullied and treated unjustly he's discharged for a reason he doesn't understand.*

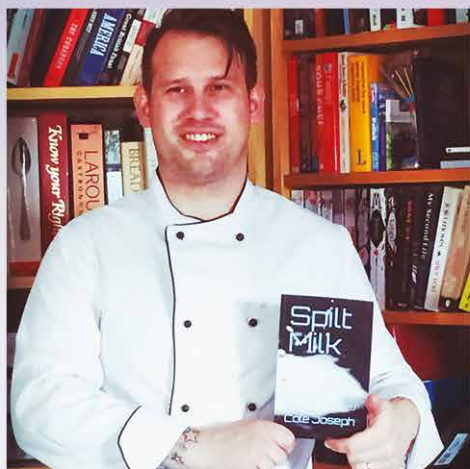
*Determined to make a career for himself, he decides to get qualified as a chef, there follows stories of back stabbing, false promotions, disreputable owner/managers and drugs.*

*Having turned his life around, happily married and a respectable chef in his own right, Cole has written his frank and moving life story. He tells it how it was, how he felt and how he has dealt with the many problems he has faced.*

*It is important to Cole that no matter how desperate and low someone may feel (he's been there), you can only go up, you can turn your life around!*

*\*contains swearing.*





Local Wirral Author  
**COLE JOSEPH**  
 A Chef Story -  
 Spilt Milk

*A short and easy read, they say you can't cry over split milk.*

*This is my story about my life of a chef, the ups and downs and when you're down you can get back up again. How karma like a bad friend will always come knocking to pay your dues, a life of what seems to be negative and full of drama, finally gets a happy ending. This is my life as a chef pulled right back and exposed to the bone.*

**REVIEWS:**

★★★★★ **Good book worth a read**

*"Great read that keeps you reading as well as a good look into the more personal side of a chefs life."*

★★★★★ **Good read**

*"As a chef I can relate to the majority of the book. It gives a different perspective to most books of this genre at the moment."*



Available through Amazon

**amazon**

**Kindle Edition**

**£5.94**

**Prime Edition  
 Paperback**

**£7.99**

ISBN-10: 1520695284

ISBN-13: 978-1520695280

One of Cole's dishes.



# UPCOMING DATES & EVENTS IN SEPTEMBER 2017

## Saturday 2nd September 2017 The Great British Prom

Bolesworth Castle, Tattenhall,  
Chester, Cheshire, CH3 9HQ  
Tel: 01630 674342



The National Symphony Orchestra, conducted by Anthony Inglis, make their debut at Bolesworth to celebrate music from across the home nations. They will be joined by Classical Brit Award winning Welsh male vocal group Only Men Aloud, Soprano Annette Wardell and traditional piped band.

## Sunday 10th September 2017 Grandparents' Day Vintage Afternoon Tea

ChesterBoat - Sightseeing  
River Cruises and Private Hire,  
ChesterBoat, Souters Lane,  
The Groves, Chester, CH1 1SD  
Tel: 01244 325394



Sunday 12:00 15:00  
\* There are 2 sailings; at 12 Noon and at 3PM.

### Guide Prices

Adult - Online £25.00 per ticket  
Adult - Booked via Office £27.50  
Child - Booked via Office £13.50  
Child (5-15 years old) - Booked  
Online £12.50 per ticket

*Note: Prices are a guide only and may change on a daily basis.*

## 7 July 2017 - 15 Oct 2017 ARK Sculpture Exhibition 9:00am - 18.00pm

Chester Cathedral, St Werburgh St,  
Chester, Cheshire, CH1 2DY  
Tel: 01244 324756

ARK is the largest free to enter modern sculpture exhibition to be held in the North West of England and features 90 works of art by more than 50 celebrated sculptors including Damien Hirst and Antony Gormley. ARK is for everyone.  
[www.chestercathedral.com](http://www.chestercathedral.com)



## 15th Sept 2017 - 19th Sept The Good Life Experience

Hawarden Estate Farm Shop,  
Hawarden, Deeside, Clwyd, CH5 3FB  
Tel: 01244 784122



A weekend of fun and discovery with music, books, food and the great outdoors. Founded by Cerys Matthews and Charlie & Caroline Gladstone.

Visit our website for more information and pricing costs.

[www.thegoodlifeexperience.co.uk](http://www.thegoodlifeexperience.co.uk)

## Friday 22nd September World Rhino Day, Chester Zoo.

Chester Zoo, Upton-by-Chester,  
Chester, CH2 1LH. 01244 380280

Black rhino. Greater one-horned rhino.  
Join our Zoo Ranger team on **Friday 22nd September** to celebrate World Rhino Day!

Drop by Tsavo Black Rhino house between 2-4pm where our Zoo Ranger team will be talking all things rhino.



## Chester Races: Season Finale 2017 - Saturday 30th September 2017 Gates open at 11.30am.

Chester Racecourse,  
Watergate Square, Chester,  
Cheshire, CH1 2LY  
Tel: 01244 304610



The final flutter of the year and your last opportunity to see the horses under starters orders; the Finale brings the spectacular 2017 season to a close.

### Guide Prices

**Winning Post Enclosure - £90**  
**County Long Room - £55**  
**County Concourse - £40**  
**Tattersalls - £32**  
**Dee Stand - £14**  
**Open Course - £10**



# The Live Rooms

The Live Rooms, Station Road, Chester, CH1 3DR  
[www.theliverooms.com/events/](http://www.theliverooms.com/events/)



YOUR GUIDE TO  
WHAT'S ON

20  
17  
SEPTEMBER

## The Doors Alive



Fri 8th September - 7pm, £15

## Showaddywaddy



Fri 22nd September - 7pm, £20

## Lucy Spraggan



Tuesday 26th September  
- 7pm, £14.50

## Women In Rock



Fri 15th September - 7pm, £11  
On the door £14



## Mused (A Tribute to Muse)



Sat 30th September - 7pm, £11  
On the door £14

## As Lions



Sun 17th September - 7pm, £9  
On the door £12

## Erja Lyytinen



Saturday 23rd September  
- 7pm, £12.50



The Live Rooms is Chester's newest and largest independent live music venue and nightclub. Our main room has hosted some of the biggest names in music from a diverse range of genres, whilst our side room provides an ideal space for smaller, more intimate shows. There is also an upstairs area which features a balcony overlooking the main room, a VIP bar and numerous seating areas.

## Subaru XV 2.0D SE Manual



*The Subaru XV 2.0D SE Manual is a handsome looking SUV which has enough of Subaru's design language behind it to make it different and interesting whilst still providing a link to the rest of the Subaru range. Indeed, it's clear association with the Forester provides a strong clue as to the XV's capabilities on and off-road along with its elevated driving position, and one of the highest ground clearances in its class making it a very purposeful package.*

### **Power and Efficiency**

The XV was equipped with a powerful and efficient 2.0-litre DOHC Subaru Boxer Diesel engine - a unit that provides you with a maximum power of 147 PS and a torque figure of 350NM. The XV also achieved 52.3mpg on the combined cycle which is quite impressive. Maximum speed comes in at around 123mph and a 0-62mph of 9.3s. This is also an engine that provides more than enough power on the road - whilst it's statement Boxer horizontally-opposed pistons provide a smoothness that are exceptional for a Diesel engine.



## On the Road

One of the benefits of the Boxer engine configuration is that it helps to lower the centre of gravity compared to the opposition as the engine block's flatter profile allows it to sit lower in the chassis, with an end result that the XV is very stable and balanced and noticeably resistant to side-to-side motion whilst driving. The Subaru is a willing companion in the bends and yet is comfortable when travelling further afield; the suspension also does a great job of isolating you from the worst that our roads can offer.

## Design and Technology

The Subaru XV offers plenty of standard equipment including, Auto HID headlamps with auto leveller, 17-inch aluminium alloy wheels, Leather wrapped steering wheel and gearshift knob, Front seat heaters, Dual-zone automatic air-conditioning system, Automatic rain-sensing windshield wipers, Heated door mirrors, Dual USB ports and auxiliary audio input jack, Rear Vision Camera System and Symmetrical All Wheel Drive.

And spending a little more on the 2.0i SE or 2.0D SE (6MT / Lineartronic) gives you access to Power

sliding, tilt-adjustable glass sunroof, Leather seats, 8-way power adjustable driver's seat, Keyless Access and Push Button Start System (touch-sensor type) SUBARU STARLINK infotainment system with SD card type navigation.

On the inside there is plenty of room for five adults to travel in comfort whilst the boot is capable of swallowing up to 1270 litres of luggage capacity and 60/40 folding seats meaning it's extremely practical for a large family.

## To Sum Up

The Subaru XV 2.0D SE Manual is an impressive performer amongst the growing SUV competition and deserves to do well, but more needs to be done on the styling inside the cabin.

Saying that, Subaru's extensive All Wheel Drive experience is impressive and it's off road potential and on road manners are something that stands out. If you're in the market for a mid sized crossover it's definitely worth a look.

Priced from **£24,440**





# CHESHIRE TRADE CENTRE

Tel. 0800 917 4622

*Car Finance Specialists*



**OUR CARS  
START FROM  
JUST £15  
PER WEEK**

[www.cheshiretradecentre.co.uk](http://www.cheshiretradecentre.co.uk)



**OUR CARS START FROM JUST £15 PER WEEK**



SMALL



MEDIUM



LARGE



MPV



PRESTIGE



4x4



SPORTS

**APPLY  
ONLINE**

**APPLY OVER  
THE PHONE**

**REQUEST  
CALLBACK**

**CALL FOR INSTANT DECISION, DRIVE AWAY IN JUST 1 HOUR**

**Representative  
8.6% APR\***

**Min £1,000  
Part Exchange**

**£0  
Deposit**

**YOUNG DRIVERS? NO CREDIT HISTORY?  
WE CONSIDER EVERYONE**

**Apply Now**

## Why Choose Us

Cheshire Trade Centre has a wealth of experience in the car industry. Every day thousands of people need car finance. We at Cheshire Trade Centre aim to help hardworking people obtain the car and the finance to suit their needs and their budget.

So we can offer the best rate and terms in the business. We are in a great position to help arrange a car and finance online or on the phone, we will reassure you, the customer, and protect your interest.

When you first contact us we will endeavor to look on your behalf. From our first contact when you apply to when you pick up the keys to your car and drive away, we will be there with advice and a helping hand.

Cheshire Trade Centre offer a personal and professional service, we understand the needs and cash flow of a family and aim to work the price of the car into the family budget.

*We Consider Everybody. Apply Today, Drive Away Today!*

## Car Showroom

We have a wide variety of cars available for you to buy right now, please use the search facility to the right to select the exact car you are looking for.

Remember we have over 100 cars in stock right now. Our online car showroom is updated daily, however if you cannot find the one you are looking for call us today as we may already have it.

Email: [info@cheshiretradecentre.co.uk](mailto:info@cheshiretradecentre.co.uk)

## Opening Times

Mon-Fri: 9am-7pm

Sat: 9am-6pm

Sun: Closed



**PARKGATE ROAD, CHESTER CH1 4AY TEL: 0800 917 4622**



# PLEASE SUPPORT LOCAL CHARITIES

This page is dedicated **FREE** to all registered Charities who wish to advertise.

## Cardiomyopathy UK

Cheshire & Merseyside support group

Our support group provides information about cardiomyopathy, and a chance to meet other people and share experiences.

**21 September 2017 - 7 - 9pm**

Venue: Liverpool Heart and Chest Hospital (Research Conference Room), Liverpool, L14 3PE.

Speaker - Christina Ronayne, Research Nurse at LHCH. Talking about the genetics of cardiomyopathy and the 100,000 Genome Project.

For more information and details of our next group meeting contact Julie Rees on 07949 241 026 or [julierees65@aol.co.uk](mailto:julierees65@aol.co.uk)

**CardiomyopathyUK**  
the heart muscle charity

[www.cardiomyopathy.org](http://www.cardiomyopathy.org)  
[contact@cardiomyopathy.org](mailto:contact@cardiomyopathy.org)  
Helpline 0800 0181 024  
Unit 10, Chiltern Court, Asheridge Road,  
Chesham Bucks HP5 2PX

Our support groups are



Registered charity no. 1184263



CHESTER BUSINESS CLUB  
**Special Event**  
ANNOUNCEMENT

## Charity Golf Day in support of North West Air Ambulance & The CBC Charity Purse

2017 CHARITY GOLF DAY

**Chester (Curzon Park) Golf Club**  
(by kind permission of the Captain  
and the Club Chairman)

**Thursday 28th September 2017**

Teams of Four Players Playing for the coveted...

**'Sutton Silver' Silver Trophy**

(£300 per team including  
Awards Presentation Dinner)

Tee off from 12pm onwards...

Prizes for:-

- **Longest Drive**
- **Nearest the Pin**
- **Winning Team**

To register your interest  
please contact:-

**Kelsa Griffiths on 01352 707729**

**or [kelsa.griffiths@nwn.co.uk](mailto:kelsa.griffiths@nwn.co.uk)**

Chester Business Club, PO Box 235, Chester, CH1 1JZ Tel. 01244 350 235  
Email: [admin@chesterbusinessclub.co.uk](mailto:admin@chesterbusinessclub.co.uk)



# September tasks in the Garden

Enjoy  
Your hard  
work

## General tasks and garden maintenance.



### Start your compost

Get your compost going by buying a compost bin or building a partially enclosed and easily accessible area for a heap. It is essential to replace the goodness in soil and autumn produces quantities of garden waste that will add invaluable organic richness back into your soil next spring.

Remember to add a variety of different materials; spent vegetable plants are ideal, but NEVER add diseased or pest-ridden material to your compost heap - it will nurture whatever villain you are trying to eliminate with loving care!

### Clear garden debris

Keep weeding; most perennial weeds are susceptible to weedkiller this month and systemic weedkillers will carry on working throughout the winter. Also clear any debris and diseased material from your garden. Pests and diseases that overwinter in your garden will reappear next spring with a vengeance so get rid of them now. Burn diseased material and put the rest of your garden rubbish (apart from woody stems) in the compost.

### Clean out the greenhouse

Once tomatoes and other greenhouse crops are over, give the greenhouse a thorough clean to prevent pests from making a home in that lovely warm environment, ready to leap into action next spring.

### Dig clay soil

If your soil is heavy clay, start digging it over now - add plenty of organic matter to improve the quality and pea shingle to improve the drainage. It can be left in a pretty

rough state over the winter when the cold will break the lumps down, making spring planting infinitely easier!

### Watering

Should September turn into an Indian summer, remember to keep watering thoroughly once or twice a week rather than little and often. Containers and hanging baskets need watering every day.

For recently planted large shrubs or trees, leave a hose trickling around the base for an hour. The same goes for established plants in dry periods - camellias, rhododendrons, azaleas and hydrangeas will abort next season's flowers if they get too dry.



Ensure trees or shrubs planted in the last couple of years on lawns or in areas of rough grass have a circle of clear earth around them - this MUST be kept clear or grass will prevent essential moisture getting through. Mulching with bark or compost will help.

### Planting

With the ideal planting conditions of autumn (warm moist soil), now is the time to plant container grown shrubs, trees, fruit bushes, perennials and bulbs. The key to successful planting is to water in well. Soak the rootball in a bucket until no air bubbles come to the surface, dig the planting hole, fill with water and allow to drain away. Place the plant in the hole, fill with soil, firm gently and water well with a watering can - this will give the plant a huge advantage over one planted with a dry rootball in a dry hole and watered only on the surface.



### EXPERTS IN NATURAL STONE PAVING

For general assistance and technical matters in the use of natural stone. Come to us for inspiration and ideas. We are stone suppliers for public or private places, landscape or paving.

**NEW SHOWROOM  
OPENING SOON**



**Paving, Block Paving, Fencing, Indian Sandstone, Artificial Grass, Solid Fuel, Tools & Accessories, Garden Sundries, Water Features**

Supplying natural stone **for almost 40 years**, view our huge range...

We have a unique range of 27 Emperor Porcelain Paving of high strength that has been specially designed to inspire and create beautiful spaces.



We have a range of 5 Granite Paving. A striking feature to any garden, a stone circle can act as a focal point



We have a range of 5 Sandblasted Sand Stone Paving. Sawn on all sides with a sandblasted surface, the setts provide a good slip resistance.



**HOOTON WORKS | HOOTON ROAD | HOOTON | WIRRAL CH66 7NB | TEL: 0151 327 5555**

Visit our website: **[www.corfestone.com](http://www.corfestone.com)**

Open Monday - Friday 8am - 5pm, Saturday 9am - 4pm





30 Years Experience  
in Professional  
Gardening &  
Landscaping

**Quality Regular Maintenance  
or one off garden tidy ups - no problem!**

*It's what we do that matters!*

All garden work: clearing, turfing, moss removal, lawn mowing, scarifying, planting, small trees, hedges, jet cleaning, fencing, rockeries, water features and pruning.

*We specialise in all garden work  
carried out to the highest level.*

**Tel: 0151 334 6227 or  
Mobile: 07425 159 788**  
Email: leehanleylandscapes@hotmail.co.uk

- HOME GARDEN MAINTENANCE
- PUBLIC HOUSES/RESTAURANTS
- APARTMENT BLOCK GARDENS
- CAR SHOWROOMS
- NURSING HOMES
- CHURCHES
- HOTELS

*... and much more!*



There are plenty of gardeners to choose from -  
so why choose us?

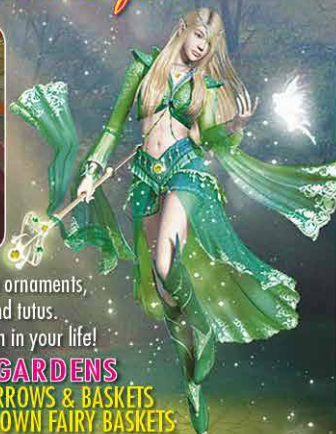
**Beautiful gardens start with us...**



# PATIOWORLD @WATERWORLD

**Chester High Road, Burton, Wirral CH64 8TF. Tel: 0151 353 8747**

*Now Open Fairyland  
Fairy Dust Boutique*



Enjoy our full range of "Fiddlehead" fairy garden ornaments,  
beautiful fairy dresses, fairy wings, wands and tutus.

Gifts & stocking fillers galore for that special person in your life!

**COMING SOON - FAIRY DUST GARDENS**

**READY MADE FAIRY GARDEN PLANTERS, WHEELBARROWS & BASKETS  
or ALL THE MATERIALS NEEDED TO MAKE YOUR VERY OWN FAIRY BASKETS**





# Premier Plants of Ledsham

A family run business who strive to give our customers an inspiring experience



up to  
**50%**  
**OFF EVERYTHING**  
**SALE NOW ON!**

 Like our facebook page

Not only are we the best plant centre in the Northwest,  
we also have an extensive range of garden products;



**Tel: 0151 347 4808**  
Email: [premierplants@suttons2000.co.uk](mailto:premierplants@suttons2000.co.uk)

Ledsham Lane, Ledsham  
South Wirral CH66 0NB



*How does your garden grow?*



### LANDSCAPE DESIGN

Full Landscaping Service  
Patios, Paving & Pathways

Decking

Fencing & Walling

Planting Schemes &  
Garden Design



### INSTALLATION

Comprehensive Lawn  
& Plant Care

Feeding, Planting (*spraying for  
fungus, pest control on leaves etc*)

Weedkilling,  
Turfing & Planting



### MAINTENANCE

Garden Maintenance

Garden Tidy Ups

Seasonal Pruning

Pots & Baskets Planted

Green Waste Removal

Jet Washing

# Greenleaves

**Outdoor Services**

*For all your garden maintenance and landscape services*



Commercial Contracts Welcomed

**Telephone: 0151 644 9963 | 07840 763 275**

**W: [www.greenleaveswirral.co.uk](http://www.greenleaveswirral.co.uk) | E: [greenleavesoutdoorservices@gmail.com](mailto:greenleavesoutdoorservices@gmail.com)**



# PLEASE SUPPORT LOCAL CHARITIES

This page is dedicated **FREE** to all registered Charities who wish to advertise.

## Ducks Ducks Ducks

With spring having sprung, new life popping up everywhere in the flowers beds, countryside and down by the river. We have had our own new arrivals at the Countess Charity in the form Ducks for this year's annual Chester Duck Race – Saturday September 16th 2017.

We are super excited to announce that Hickory's Smokehouse Chester will be supporting the event again for the third year running. With lots of plans to make this year's event as spectacular as ever and raising vital funds to assist the Babygrow Appeal in reaching its £2.4 million target.

We will have two races again down at the Groves. With the Baby Ducks going down the river first followed by the larger Corporate Ducks.

The smaller baby ducks will be available to purchase online at £2 each, at the hospital and at various community events throughout Chester in the run up to the Duck Race on September 16th 2017. Puddle Ducks Chester / Wirral are supporting the smaller duck race again which means fantastic prize money will be available for 1st, 2nd and 3rd placed ducks.



Red Door - Best Dressed Duck



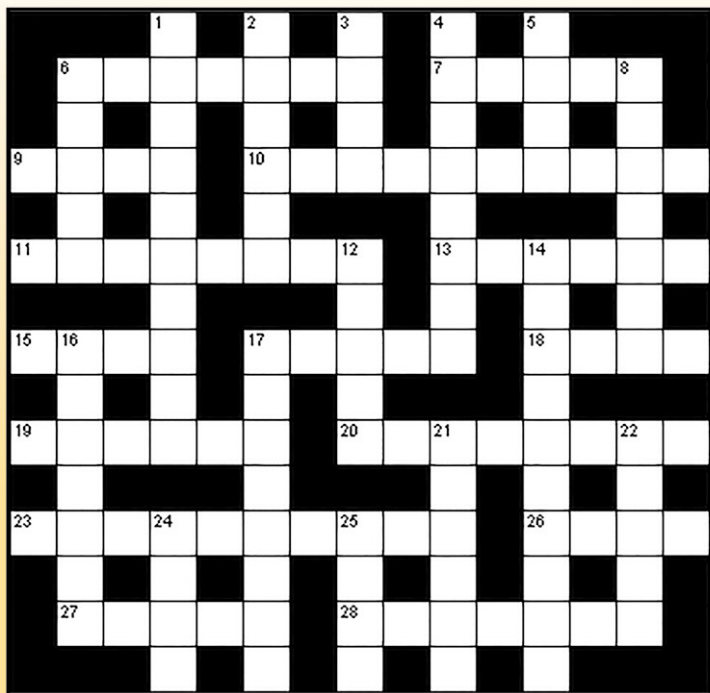
Dory Facebook Favourite -  
Puddle Ducks Chester

The larger corporate ducks priced at £200 each are available from Hanna Clarke at the Countess Charity. You can contact Hanna on 01244 366 397 / hannaclarke@nhs.net to arrange your corporate duck, so now it's time to get your thinking caps on and see who can take the 'Facebook Favourite' Duck or 'Best Dressed' Duck title. Hanna Clarke - Corporate Events and Fundraising Manager for the Countess Charity said 'Last year was my first year organising the duck race and I was astounded by the quality and innovative ideas all the companies came up with for the ducks. I am very much looking forward to seeing this year's corporate ducks, and of course the fantastic sight of the 5000 smaller ducks going off the bridge.'



Countess of Chester staff with  
"Reckless" - celebrity lookalike

# PUZZLE CORNER



## Quick Crossword Puzzle

### Down

1. Bookkeeper (10)
2. Slender (6)
3. Naval jail (4)
4. Squirming (8)
5. Leveling wedge (4)
6. Fit out again (5)
8. Rocket launcher (7)
12. Bake in a shallow dish (5)
14. What some science fiction is (10)
16. Belief (7)
17. Rumormonger (8)
21. Promise (6)
22. Our planet (5)
24. Feces (4)
25. Utilized (4)

### Across

- |                             |                         |                      |
|-----------------------------|-------------------------|----------------------|
| 6. Recuperate (7)           | 13. Influx (6)          | 20. Described (8)    |
| 7. Rehabilitation (5)       | 15. Kind of bean (4)    | 23. Dispense (10)    |
| 9. Hairdo (4)               | 17. Coming and ____ (5) | 26. Classify (4)     |
| 10. Make legal (10)         | 18. Orange pekoe (4)    | 27. Audacity (5)     |
| 11. Those without seats (8) | 19. Gap (6)             | 28. Our language (7) |

## Sudoku Puzzle

How to play: The numbers 1 through 9 will appear once only in each row, column, and 3x3 zone. There are 9 such zones in each sudoku grid.

There is only one correct solution to each sudoku. Good luck!

Difficulty level: **Hard**.

Solutions can be found on our website:  
[www.love-chester.com](http://www.love-chester.com)

			7				5	
					1	2	4	
1			6	9				
				2				
	2					5		4
	6	3	8			7		
6						9		
				3	4		6	5
	5							2



# Do you need more business?

## Advertise in Chester or Wirral

A proven track record online! [www.love-wirral.com](http://www.love-wirral.com)



Regular advertisers in Love Wirral choose our magazine because it works for them!

Call us to advertise in either **Love Chester or Love Wirral** magazine today.

### 0151 513 1279

Ask about our  
**ADVERTISING DEALS!**



## Our Rates To Advertise in Love Chester

**CHEAPER ADVERTISING RATES THAN MOST NEWSPAPERS & OTHER LOCAL MAGAZINES!**

**£40** for a 1/4 of a page  
**£80** for a 1/2 of a page  
**£120** for a 3/4 of a page  
**£160** for a full page  
**£200** for Inside Front Cover  
**£220** for Back Cover  
**£200** for Inside Back Cover  
**£190** for 1 Centre Page  
**£350** for Centre Spread (2 pages)



**FREE DESIGN OF YOUR ADVERT! FREE PHOTOGRAPHY!**

**Love Chester** the magazine of choice for all **local** businesses

Love Chester Magazine is delivered through:- Busy local high streets, our advertisers, local businesses, golf clubs, business centres, supermarkets, staff rooms, hotels, libraries, social clubs, garden centres, butchers, cafes, restaurants, bars, hairdressers, beauty salons, DIY stores, solicitors, opticians, take aways, churches, doctors, dentists, hospitals, council offices and office buildings with lots of staff!

We deliver to the following areas:- Chester City Centre, Handbridge, Boughton, Huntington, Christleton, Littleton, Vickers Cross, Hoole, Bache, Upton, Newton, Moston, Mollington, Blacon, Saughall, Saltney, Guilden Sutton, Mickle Trafford, Rowton, Waverton, Chester business park and Sealand Industrial Estate.

# [www.love-chester.com](http://www.love-chester.com)

**ONCE YOU HAVE READ ME PLEASE PASS ME ON TO SOMEONE ELSE!**

Call: **0151 513 1279** or email: **info@love-chester.com**

# PLEASE SUPPORT LOCAL CHARITIES

This page is dedicated **FREE** to all registered Charities who wish to advertise.

## 'CIRCUS' FAMILY FUN DAY

in aid of   
**children today**  
changing lives

With thanks to the



Community  
Fund

**Roll up, roll up for a great  
circus-themed day out  
with activities for all the  
family in aid of charity!**

**Sat 9th Sep 2017  
11am-4pm**

**Whitby Park, Stanney Lane,  
Ellesmere Port  
CH65 9AF**

*Children Today is a Chester  
based charity that provides  
funds for specialised  
equipment for children and  
young people with  
disabilities.*

**\* Big Top with Comedy  
Circus Shows** Shows at  
11.30am, 1pm & 2.30pm.  
Entry £2.50 pp each show.

**\* Kids Circus Skills**  
training workshops.

**\* Meet the Police & Fire  
Brigade!**

**\* Mini Funfair Area.**

**\* Dance displays, craft area,  
face painting & more.**

**\* Food and drinks area.**

**Free general  
admission to  
Funday.**

**Attraction costs  
vary.**



## BUILDING

*We understand the importance of achieving a customers vision and needs.*

*Every project is completed to the highest quality and customer satisfaction is imperative.*

*We aim to give customers confidence that we will keep disruption to a minimum and always work within a safe, clean and tidy environment.*

## GLAZING

*We are professional installers of windows, doors, bi folds and frameless glass extensions.*

*Elliott Build & Glaze Ltd is a Fensa registered company and we are able to provide a 10 year insurance backed guarantee.*

## PLANNING

*From first contact with the customer to completion of the project, Elliott Build & Glaze Ltd can provide all services required to meet your needs, from full architectural design to the final fitting of the flooring. We aim make this experience as enjoyable and stress free as possible.*



**T: 0151 336 6925**



***www.elliottbuildandglazeld.co.uk***

Email: [elliottbuildandglazeld@live.com](mailto:elliottbuildandglazeld@live.com)

Elliott Build & Glaze Ltd is a trading name of S R Elliott Build & Glaze Ltd.

# TK PVC solutions

Lightweight roofing system



## TURN YOUR CONSERVATORY INTO AN ALL YEAR ROUND ROOM TO ENJOY

At TK PVC Solutions we have the solution, a new lightweight roofing system that we can fit to your existing conservatory.

Also, to bring the outdoors inside, why not add one of our bi-fold or tri-fold doors.

A conservatory conversion that gives you what you wanted in the first place at a fraction of the cost, from Wirral's leading specialist company.

### Benefits

- warmer in winter
- cooler in summer
- low maintenance
- excellent build quality
- reduced noise from rain, hail and traffic
- large selection of options available
- insurance backed 10 year guarantee



Before Lightweight Roofing



After Lightweight Roofing



New build recently completed by TK PVC Solutions



Tri-fold doors letting the outside into your home



Call today for a FREE no obligation Quote.

**0151 345 6545**  
**www.tkpvc.co.uk**

**VISIT OUR SHOWROOM**  
Waterworks Lane, Hooton,  
Wirral CH66 7NL

