

# LOVE Chester

The Monthly Business & Community Magazine



ROTARY MEMBERS

December 2017  
Issue 10

Your **LOCAL** magazine delivered monthly in & around Chester

USE OUR ADVERTISERS TO KEEP CHESTER BUSINESSES MOVING  
FOR QUALITY, LOCAL and RELIABLE TRADES PEOPLE

I'm  
**FREE**  
Pick Me Up!



[www.love-chester.com](http://www.love-chester.com)



ONCE YOU HAVE READ ME PLEASE PASS ME ON TO SOMEONE ELSE!

Call: **0151 513 1279** or email: [info@love-chester.com](mailto:info@love-chester.com)



*Merry Christmas  
& New Year*  
from all our staff



**We are now open**

**SUNDAY** 9-6 pm

**MONDAY** 9-6 pm

**TUESDAY** 9-6 pm

**LATE NIGHTS**

**WEDNESDAY** 9-9 pm

**THURSDAY** 9-9 pm

**FRIDAY** 9-9 pm

**SATURDAY** 9-6 pm

Cut & Finish **£20.00**

**Colours**

Full head highlights **£50.00**

including cut & finish

Half head highlights **£40.00**

including cut & finish

**PERNICKETY HAIR CO**

**0151 355 3608**

L'ORÉAL  
PARIS

JOICO  
THE ART OF HEALTHY HAIR

HEAD  
CANDY

ghd

FUDGE

49 Chester Road, Whitby, Wirral

# Loving the room.

With **0% finance** available over three years, it's never been more affordable to get more room for everything you love with Sliderobes.



Call or go online now to arrange your  
**FREE AT HOME CONSULTATION**

VISIT OUR SHOWROOM  
**WIRRAL 0151 334 2121**

Unit 3 Welton Road, Croft Trade Park,  
Bromborough, Wirral, Merseyside, CH62 3PQ

**SLIDEROBES®**

SLIDEROBES.CO.UK



# WHAT'S IN THIS MONTHS LOVE CHESTER MAGAZINE



8

**What's Happening At Our Zoo**



14

**December In The Garden**



22

**Holiday Destinations - BAHAMAS**



30

**Auto Review by Tony Yates**



37

**An Elegant Holiday Feast Recipe**

## Love Chester

The Local Magazine for Businesses in and around Cheshire.

What's Happening At Our Zoo	8
Do You Know?	12
December In The Garden	14
Holiday Destinations - Bahamas	22
Community News - Have Your Say	24
Chester Rambling & Hill Walking	28
Auto Review by Tony Yates	30
Advertising Deals With Us	33
2017 Upcoming Events in Chester	34
The Live Rooms - Gig Guide	35
Support Local Charities	36
An Elegant Holiday Feast Recipe	37
Puzzle Corner	38

Cover image of The Cross, Chester © Rue Photography  
Tel: +353857168550 / +447940407107  
email: RuePhotography@yahoo.com  
<http://www.facebook.com/RuePhotography.ie>  
<http://www.instagram.com/RuePhoto>



### Dear Friends,

It's the month for spending time with family and friends! We would like to wish all our readers and advertisers a fantastic Christmas!

Our advertisers are trusted, friendly, reliable tradespeople providing quality work and

products at realistic prices. They are local businesses who employ local people, building our community here in Cheshire and making it such a beautiful place to live. I am regularly told how helpful they are, what a great job they have done and the inspiration they have given! I have to say, I LOVE my job!

It's been another busy year for us and we would like to thank all our advertisers for advertising with us in **LOVE CHESTER** magazine!

Do you know every one of our magazines are available online at [www.love-chester.com](http://www.love-chester.com)? Please join us on Twitter, Facebook.

Please spare a thought and spread goodwill to those who may be on their own at this time of year. It is easy to forget that Christmas and New Year can be very lonely and a sad time for others.

Enjoy your December and don't forget to tell our fantastic advertisers you saw them in Love Chester Magazine!

**[www.love-chester.com](http://www.love-chester.com)**

Best Wishes  
Maxine & Mike



**BUDDY PUG**  
Love Chester mascot

Circulation of this **FREE** magazine is distributed to Chester and its surrounding villages.

Love Chester Magazine Limited Registered Office: 1st Floor 12 Church Road, Gatley, Cheadle, Cheshire, SK8 4NQ

Company Number: 10588054

"Love Chester" is produced by an independent organisation; which is not connected to any other organisation, publication or groups.

All material is copyrighted and no part of this publication may be reproduced or transmitted without the written permission of the copyright holder.

Please note that we do not endorse any products or services of any advertisers. All advertisements and their content are accepted in good faith. Responsibility for copyright and the accuracy of the information provided lies with the advertiser.



# Your Dream kitchen starts here

**Ellesmere Port  
Showroom Open**

10am - 4.30pm  
Mon to Fri.  
9am - 12pm Sat.  
Closed Sun

**Insist on the original 'top that fits on top'.**

You can have the kitchen you've always dreamed of without the nightmare of weeks of disruption and mess. Our quartz, granite, porcelain and glass worktops are custom-made in our own workshops before being expertly fitted on top of your existing surface by our own craftsmen, transforming your kitchen completely in as little as one day.

## Start at the top

Our worktops are just the beginning. With over 30 colours to choose from, there's a style to suit every look, from Country Kitchen to Scandinavian Chic. Add splashbacks, replacement doors, mosaics and flooring to match and your dream has come true!

## Tough and beautiful

Our high performance materials are heat, stain and scratch resistant and come with an industry-leading lifetime warranty.

- Worktops, splashbacks, doors, floors, appliances and accessories
- High performance, low maintenance
- No demolition - less waste, less mess, less disruption
- Installed in as little as 1 day
- Local business, global reputation
- Kitchens, bathrooms and more

Ellesmere Port Showroom:  
Unit 17/18,  
Junction 8 Business Park,  
Rosscliffe Road,  
Ellesmere Port CH65 5AA

KITCHEN & BATHROOM MAKEOVERS

Book your **FREE** in-home Design Consultation.

call: **0151 434 4880**  
or visit **trend-ellesmereport.co.uk**

**TREND**<sup>®</sup>  
transformations

## Speke Display:

Dobbies Garden Centre, Speke Hall Av,  
Speke, Liverpool, Merseyside L24 1UX

## Burton Display:

Gordale Garden Centre, Chester High Rd,  
Burton, South Wirral, Chester CH64 8TF

# HomeEnergyBuildingSolutions

We identify the problem and install the correct solution

**DOES YOUR HOME SUFFER FROM  
DAMP or CONDENSATION**

**25yr  
guarantee**

condensation

For a FREE HOME DAMP SURVEY CONTACT

**0151 678 4551**



Black Mould



Rising Damp



Rising Damp

Condensation

Penetrating Damp

Black Mould



## FOR 33% SUBSIDY

QUOTE AD33CW

**YOUR LOCAL DAMP PROOFING EXPERT**  
**FREE DAMP PROOFING SURVEY and QUOTATION**

**RISING DAMP SOLUTIONS**  
**DAMP PROOF COURSES**  
**PENETRATING DAMP and**  
**CONDENSATION TREATMENTS**

**INSULATING WALL  
COATINGS**

6 info@homeenergysolutionsnw.co.uk





**LIVING  
FLOORS**  
*& more...*

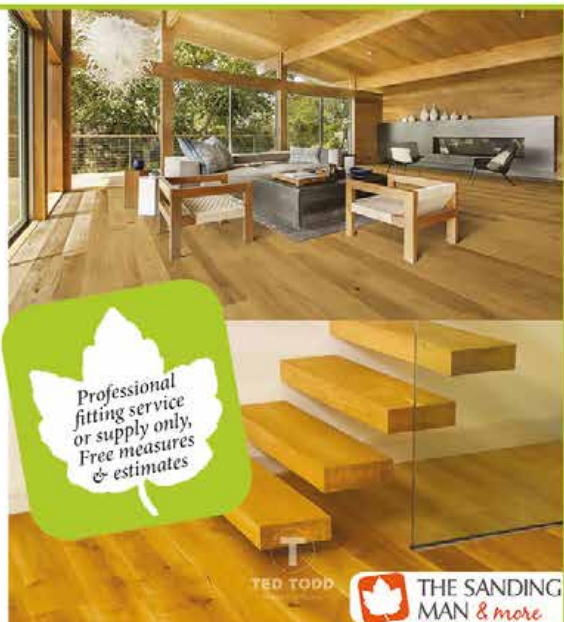
## Wood Floor Specialists

A Family Business, Est 1997

**Ted Todd Flooring**  
**Quickstep**  
**Livyn Luxury Vinyl**  
**Floor Sanding**

**Opening Hours**

*Monday - Saturday*



Unit 1B, Chester Trade Park, Bumpers Lane, Sealand CH1 4LT  
Phone 01244 382416 | [www.living-floors.co.uk](http://www.living-floors.co.uk) | [www.thesandingman.com](http://www.thesandingman.com)



**LIVING PLANTATION  
SHUTTERS & BLINDS**

A Family Business, Est 1997

All types of made to measure  
blinds supplied

**CONSERVATORY SAIL BLINDS**  
**VENETIAN**  
**ROLLER**  
**VERTICAL**  
**ROMAN**  
**SENSES**

**Opening Hours**

*Monday - Saturday*



Unit 1B, Chester Trade Park, Bumpers Lane, Sealand CH1 4LT  
Phone 01244 382416 | [www.livingshuttersandblinds.com](http://www.livingshuttersandblinds.com)



# OUR ZOO

What's  
happening  
at Chester Zoo.

**Jumping for joy!**  
**Get ready to meet the UK's ONLY**  
**'miniature kangaroos' at Chester Zoo**

Rare miniature wallabies,  
Kai and Aru



- Dusky pademelons, also known as dusky wallabies, arrive in Chester for very first time
- Indonesian species is vulnerable to extinction in the wild
- Rare and unusual animals are the only ones of their kind in the UK

- Kai and Aru are set to go on show to the public as zoo bids to raise awareness of the threatened species

Hop hop hooray! Kai and Aru, the UK's only dusky pademelons, settle in at Chester Zoo.





## OUR LATEST NEWS & EVENTS

The UK's only dusky pademelons are set to make their public debut at Chester Zoo.

Rare miniature wallabies, Kai and Aru, will soon hop out into the limelight – the first time the unusual Indonesian animals have ever been seen at Chester.

The rare mammals, a species of marsupial, have arrived from Plzen Zoo in the Czech Republic.

Mammal keepers hope to eventually introduce the duo to a female as part of a European-wide breeding programme for threatened animals.

Dusky pademelons are also known as dusky wallabies and, in the wild, are found in forests on the island of New Guinea.

They are listed as vulnerable to extinction by the International Union for the Conservation of Nature (IUCN), with their population estimated to have declined by 30% in the last 15-20 years. The demise of the species is largely due to hunting for its meat.

Experts from Chester now want to help raise awareness of the plight of the species in the wild.

Tim Rowlands, Curator of Mammals at Chester Zoo, said:

"Little is known about these little Indonesian kangaroos. Indeed, many people may not have even heard of a dusky pademelon before.

"However, Chester Zoo is committed to the conservation of threatened species and is always looking to break new ground by working with unusual, unheralded, often unknown animals and so we're particularly pleased with the arrivals of Kai and Aru. We hope they put the fascinating species on the map and bring some needed attention to them."

Chester's dusky pademelons are two of only 33 cared for by zoos in Europe.

- [www.facebook.com/chesterzoo1](http://www.facebook.com/chesterzoo1)
- [@chesterzoo](https://www.instagram.com/chesterzoo)





**GLASSFILMS** UK  
Architectural Glass Film Applications

Tel: 0151 645 6792  
info@glassfilmsuk.com



**WINDOW TINTING FROM GLASS FILMS UK HELPS PROTECT  
YOUR HOME, WORKPLACE OR HOLIDAY HOME BY ELIMINATING  
UNWANTED HEAT, GLARE, UV RAYS AND FURNITURE FADE WHILST  
GIVING PRIVACY AND A CONTEMPORARY LOOK TO YOUR PROPERTY.  
ANTI INTRUDER & ANTI GRAFFITI FILMS ALSO AVAILABLE.**



**www.glassfilmsuk.com**



**GLASSFILMS** UK  
Architectural Glass Film Applications

## **Switchable Glass Film Specialists**



This amazing switchable glass film can be applied to a wide range of internal or external glass panels. With the flick of a switch you can transform your meeting room or office from an airy open space to a private, more secure area.



The dynamic use of switchable glass film within architectural designs is limitless. With its light transmission, privacy, glare and energy control capabilities, it allows for a dramatic shift in the application and performance of glass within designs.

Dim it, project on it, stick it, hang it, use it as a white board or high tech window treatment and more! Our switchable electric films are designed to variably adjust light between a transparent and an opaque state with AC power. Our technology allows for privacy of windows on demand with the flick of a switch or the turn of a dimmer and is the next generation in switchable privacy glass as well as electronic dimmable window treatments.

**SWITCH/FILM**  
by GlassFilmsUK

**SOLAR/FILM**  
by GlassFilmsUK

**FROST/FILM**  
by GlassFilmsUK

**PRIVACY/FILM**  
by GlassFilmsUK

**SECURITY/FILM**  
by GlassFilmsUK



# cheshire joinery services ltd

Bespoke hardwood windows and doors

*We wish all our customers, past and present a very  
Merry Christmas and a Happy New Year!*



Join us for a workshop tour and have a bag of briquettes on us!!

Unit 1b, Barrowmore Estate, Gt Barrow, CH3 7JA  
[www.cheshirejoineryservices.com](http://www.cheshirejoineryservices.com)  
[info@cheshirejoineryservices.com](mailto:info@cheshirejoineryservices.com)  
**Tel: 01829 741751**

# DO YOU KNOW?

1. The blobfish is actually a normal looking fish, it just decompresses when you take it out of extreme depths.
2. The deadliest James Bond was Pierce Brosnan, who killed an average of 33.8 people per movie.
3. Sony makes more money as an insurance company in Japan than selling electronics.
4. If a potato is exposed to light while growing, it will turn green and become poisonous.
5. The Netherlands surrendered to Nazi Germany after just 5 days.
6. The U.S. Secret Service has its own flag.
7. Frogs find their way back to their breeding grounds by following the smell of the pond's algae.
8. Plants can suffer from sexually transmitted diseases.
9. Harry Houdini could pick up pins with his eyelashes and thread a needle with his toes.
10. A leech can take up to 200 days to digest a meal.



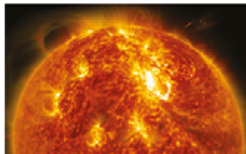
11. Lobsters don't scream in pain when you cook them. The noise you hear is air that has been trapped in the stomach and forced through the mouth.
12. River snails and a parasite prevented a Chinese invasion of Taiwan in 1949.
13. "Placenta" comes from Latin, meaning "cake."
14. Benjamin Franklin left the cities of Boston and Philadelphia \$2,000 in his will, but they could not draw the full balance for 200 years. In 1990, the cities received \$6.5 million.



15. It's unsafe for travellers to rely on 'St Christopher' any more: he was removed from the calendar of saints in 1969.
16. Before they reached international stardom, The Beatles auditioned for Decca Records, who rejected them saying they had "no future in show business."
17. Before he was Wolverine on "X-Men" or a Broadway star, actor Hugh Jackman got fired from his cashier job at 7-Eleven.



18. An investor in the initial public offering of Microsoft would have seen a return of 30,207%.
19. The first time comedian Jerry Seinfeld walked on stage at a comedy club he froze and was booed off stage.
20. Unit 684 was a South Korean black-ops team of 31 convicted criminals whose mission was to kill North Korea's premier Kim Il-sung. They mutinied, hijacked a bus, and were shot by the army or committed suicide.
21. The Queen is the legal owner of one-sixth of the Earth's land surface.
22. In the UK, all horses, ponies and donkeys must have a horse passport.
23. In London, it is illegal to die in the Houses of Parliament.
24. Slavery was not made a statutory offense in the UK until April 6, 2010.
25. The Queen Mary of Scotland became queen when she was only six days old.
26. 1.3 million Earths could fit inside the sun, an average-sized star.
27. It takes 8 minutes and 20 seconds for light to travel from the sun to the earth.
28. There are more living organisms in a teaspoonful of soil than there are people on earth.
29. Before trees were common, the Earth was covered with giant mushrooms.
30. In 5,000 years of human history, only one disease has been eradicated: smallpox.
31. When Columbus "discovered" the Americas, the continent was already inhabited by 90 million people which was a third of the world's population.
31. The eruption of Krakatoa in 1883 was the loudest sound in recorded history, heard 3,000 miles (4800 KM) away.
32. Ice Age Britons used human skulls as cups.
33. The first car accident occurred in 1891, in Ohio.



34. The Aztecs sacrificed 1% of their population every year, or about 250,000 people.





# Sherlocks

*Big Enough To Manage — Small Enough To Care*



## Dear Residents

At Sherlock Estate Management we specialise in the day to day running of apartment blocks, large and small both locally and throughout the region. We are a friendly company and have been established since 1986 in the centre of Liscard, which is located in Wallasey, Wirral.

We are pleased to have an opportunity to offer you our services as estate managers. We do appreciate considering a management company can be a delicate decision but we can assure you that we are **100%** confident that we can help you. With this in mind we would be more than happy to call and see you, or you are more than welcome to visit us here at our office. Our time is your time.

We feel residential management requires a personalised approach and given the opportunity, we will endeavour to familiarise ourselves with you and your property and match our service to your requirements, this is something we pride ourselves on.

The items below illustrate a number of day to day tasks that we can administer on your behalf:

- Service Charge Collection**
- Legal Matters**
- General Cleaning**
- Gardening**
- Window Cleaning**
- Decorating**
- Maintenance**
- Insurance Policies**
- Annual Accounts**
- Neighbourly Issues**

*We can arrange new or retain existing contractors and can help with as much or as little as you need.*

Sherlock House, Manor Road, Wallasey, Wirral, CH45 4JB

**Telephone: 0151 638 8160**

**[www.sherlockpropertymanagement.co.uk](http://www.sherlockpropertymanagement.co.uk)**



# What to do in the Garden in December

As Christmas approaches, our to-do lists don't often contain gardening tasks at this time of year. Luckily, you can take it a little easier this month without any risk to your garden; maintenance is the most important thing until spring. Of course, if you are looking to keep up the pace of your gardening, don't worry, there are still plenty of smaller jobs we can advise you to do.

## Maintenance

Clearing borders of dead or dying plants helps create tidy displays, showing off those still in bloom. The spent debris makes a great soil improver for next year, so get it rotting down. Prune harshly to improve the shape of your trees and shrubs, look out for flaws such as split or broken branches, and make sure you cut them back so they are healthier next year.

Don't rely on bought garden compost; it's the perfect time of year to create your own. Keep any plant cuttings and kitchen scraps, mix them together and allow them to rot down ready to be used next spring.

Leaves and manure are great for creating an alternative to compost; leaf mould can act as soil coverage during those harsh winter months and manure can be rotted down and used to rejuvenate your soil with nutrients. If you're looking for something a little more natural, green manures like clover or rye are great for improving soil nature's way.

Mulch requires very little work, and is great for applying to the roots of established or flowering plants. Let earth worms do all the hard work; they will eventually drag and blend the mulch into top soil.

Don't let ivy be a pest; it may seem like any other climbing plant usefully covering your bare walls and fences. Unfortunately no matter how much you try and keep it in bounds, ivy always has a way of escaping! It has a habit of smothering other plants and annoying neighbors, so make sure you keep cutting back those escaping shoots or get rid of it altogether.

Be aware of pests and diseases, one of the most prevalent diseases this time of year is root rot. Stop root rot by placing pots in the rain shadow of a wall or fence and lift them off the ground on pot feet or large stones to let the moisture drain out. Prevent falling leaves from going near the base of your roses to stop the spreading of rose black spot. Take hardwood cuttings. Propagate a wide range of fruits trees and shrubs by taking hardwood cuttings from healthy plants in winter.



## Protection

December is all about protection for your plants and garden wildlife. Protect ponds by catching any fallen leaves with a small net and trimming off any dying or tatty foliage so they don't pollute the water. You may wake up on those winter mornings to find your pond covered in ice, fish can withstand such low temperatures but can't survive if icebound. Float a tennis ball on the surface to stop ice taking over your pond and keep your fish and pond wildlife safe.

Wind can cause major problems, sometimes loosening plants causing disease to spread or making them become completely dislodged from the ground. When plants are loosened it forms a gap between them and the soil, allowing excessive moisture and frost to reach the roots. Check that newly planted plants are firmly back into place and reduce the height of overly tall plants will reduce wind rock. If you are extremely worried about some of your tender plants, the best thing to do is move them inside when the weather becomes more severe. The cold weather doesn't just affect your plants, don't let your containers crack as the frost starts to set in, wrap them with bubble polythene or fleece. If you have lots of containers pack them together and wrap protection around as a group. Your garden furniture is also at risk, cover furniture with polythene sheeting to protect it from becoming damp and possibly rusty.

Remember to replenish and add water for birds to drink. Watch out for bird nests when pruning. Many gardeners assume that birds aren't hungry when they look plump; birds actually fluff up their feathers to minimize the loss of heat from their bodies when they are seriously hungry.







For all your **natural** stone



**Wirral's No.1**  
for stoves & solid fuel

NATURAL STONE HEARTHES | SOLID TIMBER BEAMS | MULTI FUEL STOVES | DEFRA APPROVED STOVES  
STOVE ACCESSORIES | COAL | SMOKELESS FUEL | ECO FUEL · SEASONED LOGS | KINDLING | FIRELIGHTERS

# RELAX, PUT YOUR FEET UP AND ENJOY CORFE SOLID FUELS!

50kg Open Sacks delivered of both  
Smokeless and Housecoal

House Coal



Smokeless  
Coal



Firelighters



Homefire Kiln  
Dried Logs



UK Heatlogs



Logs

Jumbo Bags from **£75**  
Hardwood or Softwood



Straws



Anthracite

## Don't Shiver We Deliver!

HOOTON WORKS | HOOTON ROAD | HOOTON | WIRRAL CH66 7NB | TEL: 0151 327 5555

Visit our website: **[www.corfestone.com](http://www.corfestone.com)**

Open Monday - Friday 8am - 5pm, Saturday 9am - 4pm



# Premier Plants of Ledsham



Browse around our indoor  
hanging forest of over 1000  
British grown trees from the last  
week of November

Christmas &  
Potted Tress  
**NOW IN STOCK**

Non-Drop  
Christmas Trees  
from £14.99

Potted  
Christmas Trees  
from £19.99

A wonderful day out for all of the family at Premier Plants of Ledsham, Wirral's hidden gem. Nestled amongst the rural setting of Ledsham Village, Premier Plants is accompanied by the onsite cosy cafe Hosta, ideal for those hearty winter warmer dishes & The Haven Home Interiors, a treasure trove of wonders for your home.

LATE NIGHT OPENING 7th, 8th, 14th & 15th DECEMBER



Seasonal Stock



Irresistible Handmade  
Hanging Wreaths



Fabulous  
Range of  
Indoor &  
Outdoor  
Festive  
Lighting

Winter Hanging Baskets • Roses • Winter Shrubs • Ornamental Trees • Fruit Trees & Bushes

**WHERE TO FIND US:**

**LEDHAM LANE, LEDSHAM, SOUTH WIRRAL, CH66 0NB**

**Tel: 0151 347 4808**

**EMAIL: [premierplants@suttons2000.co.uk](mailto:premierplants@suttons2000.co.uk)**





Also within Premier Plants...

# THE HAVEN

HOME INTERIORS  
Online & In your home

**Deck the halls** this festive season with our beautiful range of Christmas decorations.

Buckets of baubles & heaps of twinkle-tastic goodies all under one roof at The Haven.



Soft Furnishings



Delightful Decorations



Personalised Gifts



Gifts Galore



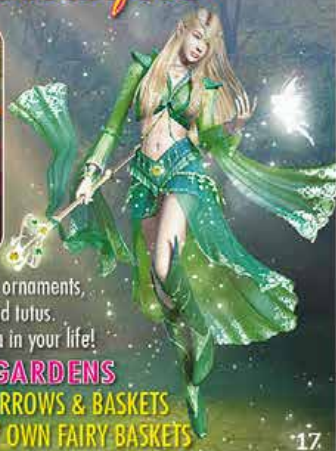
[www.havenfurniture.co.uk](http://www.havenfurniture.co.uk)

HAVEN TEL: 0333 990 0138 EMAIL: [advice@havenfurniture.co.uk](mailto:advice@havenfurniture.co.uk)

## PATIOWORLD @WATERWORLD

Chester High Road, Burton, Wirral CH64 8TF. Tel: 0151 353 8747

*Now Open Fairyland  
Fairy Dust Boutique*



Enjoy our full range of "Fiddlehead" fairy garden ornaments, beautiful fairy dresses, fairy wings, wands and tutus. Gifts & stocking fillers galore for that special person in your life!

**COMING SOON - FAIRY DUST GARDENS**

READY MADE FAIRY GARDEN PLANTERS, WHEELBARROWS & BASKETS  
or ALL THE MATERIALS NEEDED TO MAKE YOUR VERY OWN FAIRY BASKETS





30 Years Experience  
in Professional  
Gardening &  
Landscaping



**Quality Regular Maintenance**  
or one off garden tidy ups - no problem!

*It's what we do that matters!*

All garden work: clearing, turfing, moss removal, lawn mowing, scarifying, planting, small trees, hedges, jet cleaning, fencing, rockeries, water features and pruning.

*We specialise in all garden work  
carried out to the highest level.*

Tel: 0151 334 6227 or  
Mobile: 07425 159 788  
Email: leehanleylandscapes@hotmail.co.uk

- HOME GARDEN MAINTENANCE
- PUBLIC HOUSES/RESTAURANTS
- APARTMENT BLOCK GARDENS
- CAR SHOWROOMS
- NURSING HOMES
- CHURCHES
- HOTELS

... and much more!



There are plenty of gardeners to choose from -  
so why choose us?

**Beautiful gardens start with us...**



# A.S.H.

## Tree Surgery

All aspects of tree surgery  
and site clearance undertaken



### LOGS/FIREWOOD

**£45 per bulk bag**  
(mixed wood)

**£65 per bulk bag**  
(hard wood)

**£5 off next order**  
on return of bag

**Delivered loose**  
**£40 per bag mixed wood**  
(most economical way  
of delivery)



### MOBILE LOG SPLITTING

Do you have logs/trunks that  
need processing?

We have large 30 tonne log  
splitter for hire comes with  
operators, or a smaller 20  
tonne splitter with operator.

Mobile circular saw  
with operator.

*Call for details.*



# Call 07836 370280

LOGS & FIREWOOD • TREE SURGERY & LANDSCAPING WIRRAL & CHESTER

**www.ash-services.co.uk**

18 Two Mills Barn, Welsh Road, Woodbank, CH1 6HT Email: ashservices@icloud.com



# LPW PLUMBING SERVICES

**Your Local Emergency Plumber**

- 24 HOUR PLUMBING
- ALL GENERAL PLUMBING REPAIRS UNDERTAKEN
- PLUMBING MAINTENANCE
- ALL BLOCKAGES
- BATHROOM DESIGN & INSTALLATION
- ALL WORK FULLY INSURED

WIAPS - Water Industry Approved Plumbing Scheme

Call Lawrence on:

**07738 462315**

01928 898375 (After 6pm)

[www.lpwplumbingservices.co.uk](http://www.lpwplumbingservices.co.uk)

[info@lpwplumbingservices.co.uk](mailto:info@lpwplumbingservices.co.uk)



## Indian Cookery Lessons

Learn to make your own authentic Indian meal, fresh and delicious, full of flavours

**LEARN OR GIFT SOMEONE A WONDERFUL LIFE SKILL**

**Book NOW for day courses**

9 Dec, Saturday, 10am-4pm

20 Jan, Saturday, 10am-4pm

27 Jan, Saturday, 10am-4pm

10 Feb, Saturday, 10am-4pm

Claremont Farm kitchen, Wirral, CH63 4JB.  
Vegetarian classes also held.



Contact: **SOMA:**

**07770752053 or 0151-3349352**

## ARK Contemporary Designs

by **Angela Ruth Kennedy**

Beautifully Handcrafted Jewellery



commissions • repairs • sales • tuitions • workshops

[www.arkcontemporarydesigns.co.uk](http://www.arkcontemporarydesigns.co.uk) | Tel: 07917 330790 | 01244 567012

Fencing  
Gates  
Sheds & Log Stores  
Decking  
Paths & Patios

# Justfencing

C H E S H I R E

Installers of quality timber fencing

**FREE NO OBLIGATION QUOTES**

**0151 336 7598 / 01244 470 120 / 07957 349 244**

[www.justfencingcheshire.co.uk](http://www.justfencingcheshire.co.uk)



# AED

## DEVELOPMENTS

YOUR VISION

OUR EXPERTISE

AED Developments offer over 10 years project management experience with professional qualified tradesmen, offering you the client the highest quality of work guaranteed.

- Extensions
- Refurbishment
- Kitchens
- Bathrooms
- Roofing
- Rendering
- Joinery
- Plumbing

(Registration number: 573030)

- Electrical Installation

(Napit approved Part P contractor: 27544)



Building on Trust



[www.aeddevelopments.co.uk](http://www.aeddevelopments.co.uk)

EMAILS: [ANDY@AEDDEVELOPMENTS.CO.UK](mailto:ANDY@AEDDEVELOPMENTS.CO.UK) OR [SUE@AEDDEVELOPMENTS.CO.UK](mailto:SUE@AEDDEVELOPMENTS.CO.UK)

Telephone: 07947784437 or 0151 641 6551

1 Commerce House, Commerce Park, Campbeltown Road, Birkenhead, Wirral, CH41 9HP



# dental solutions

Philip Morrison has provided  
**Life Transformational Dentures** for over 20 years

## What is a Clinical Dental Technician?

A Clinical Dental Technician or CDT is a registered Dental Care Professional who is trained and qualified to offer a range of Denture Services.

## Imagine only you and your CDT know you wear dentures.

Philip Morrison BSc Dip CDT RCS Eng has over 20 years of experience as a dental technician.

A graduate of Manchester University, Philip continued his education and became a Clinical Dental Technician with the Royal College of Surgeons England.



**Call us now 0151 678 9833**

## Do you want the confidence of a natural smile?

Our patients tell us their confidence has been restored due to our professional approach, caring attitude, and attention to detail. We look forward to meeting you and beginning your journey towards a new smile.

## Implant Retained Dentures

Many patients who have chosen to have implants, report they are happy and comfortable for the first time since the loss of their natural teeth.

### Benefits of Implant Retained Dentures

- Confidence when smiling, laughing and talking
- Your chewing ability is restored
- Taste is not compromised, as the palate is not covered
- Suitable even in cases where bone loss has already occurred
- Further bone loss is prevented
- No more loose dentures.

We provide the very best quality of denture care in our warm and welcoming environment, located in the heart of the Wirral.

## Testimonial Implant Retained Denture

“Thank you so much for the service you have given to me. I am so pleased with the final results. My teeth look so natural and just how I wanted them to look. Thank you for all your efforts.”

Pam -Wirral



Before



After

**SMILE MAKEOVER**

**JOIN US**

**FREE 30 MINUTE CONSULTATION**

Please contact us for more information or to arrange a free smile consultation with one of our smile advisors.

**0151 678 9833 BOOK YOUR PLACE NOW**

**Dental Solutions Denture Clinic**

399-399a Upton Road Prenton Wirral CH43 9SE

e: [info@dentalsolutions.org.uk](mailto:info@dentalsolutions.org.uk) | [www.dentalsolutions.co](http://www.dentalsolutions.co)



HOLIDAY DESTINATIONS

# BAHAMAS

MIAMI STAY &  
7 NIGHTS CARIBBEAN  
CRUISE

The Bahamas is known for its stellar beaches. With over 2,000 breathtaking islands and cays, and the clearest water on Earth, it's no wonder visitors come from all around to sink their toes into miles of pure white, and in some places pink, sand. Many of the beaches have been voted "best in the world" by numerous publications, and it's not uncommon to find a celebrity or two strolling along these shores. In short, the beaches you'll find here are the very definition of paradise.

The Islands Of The Bahamas offer an array of dive experiences like no other destination in the world. You'll find sunken Spanish galleons, inland blue holes, underwater caves and forest-like coral reefs teeming with vibrant marine life. You can even feed and swim with reef sharks—an experience sure to get your adrenaline pumping.

## MIAMI

This will be your first stop. There are so many sights to see and places to go in Miami. From world-renowned museums to their beautiful parks, beaches, and cultural centres, there is something sure to please the kid in everyone. In fact, you won't believe how many fun things are absolutely free. Miami near perfect weather makes it the ideal place to create great childhood memories during every season of the year.

## NASSAU

Hidden among a group of islands poised between the Atlantic and Caribbean—and only a few hundred miles from the United States' southern coast of Florida—Nassau Paradise Island has sheltered everyone from pirates and freed

slaves to blockade runners, rum smugglers and runaway lovers over the centuries. And although times are peaceful now, they still cherish a tradition of people making their own rules under sunny skies.



Musical traditions here reflect both the impact of history on the islands and a homegrown, distinctively national character. All through the islands of The Bahamas, music is woven deeply into the fabric of daily life—so much so that one of the nicknames given to our archipelago is "the Islands of Song".

## PHILIPSBURG

Philipsburg is the main town and capital of the country of Sint Maarten. The town is situated on a narrow stretch of land between Great Bay and the Great Salt Pond.

In my mind the Philipsburg Boardwalk -- which didn't even exist a few years ago, is by far the biggest attraction in town. Nearly 50 feet wide and running nearly the entire length of the city's Great Bay waterfront, the Boardwalk serves as a lively "back porch" for the hotels and restaurants on the south side of Front Street. You'll find strollers, skaters, and even Segway tours cruising along the half-mile-plus ribbon of concrete. You can rent beach chairs and an umbrella -- with a half-dozen cold beers thrown in for about \$20.



## SAN JUAN

Once Here...You'll Never Want to Leave...

The charming Old San Juan will transport you back to colonial times. Bring comfortable shoes, because you'll want to walk every cobblestone street, with bright candy coloured homes. Explore scenic waterfronts, century old forts, museums, charming plazas, excellent restaurants, shopping, and be sure to experience our vibrant culture by attending our festive events just about every week of the year. San Juan is the most popular tourist destination in Puerto Rico, a great central location, and the best starting point when visiting the island. San Juan is truly an all-inclusive vacation offering something for everyone to enjoy.



If you would like to visit the Bahamas & Caribbean with a stay in Miami then visit [www.cruisenation.com](http://www.cruisenation.com)

**MIAMI STAY & 7NT CARIBBEAN & BAHAMAS**

**MSC Cruises, MSC Seaside  
INC. FLIGHTS & HOTELS**

Depart: 13th April 2018, for 8 nights  
**TOTAL PRICE:**

**£949.00**



# TWO GREAT DEVELOPMENTS FROM ONE AWARD WINNING HOUSEBUILDER...

**WATKIN JONES**  
HOMES



## Cestria Row

Milton Street,  
Chester CH1 3DS

Situated in the historic city of Chester, Cestria Row is a development of just eleven 3 bedroom townhouses and one 4 bedroom property.

Conveniently close to the city centre, Cestria Row will prove ideal for couples, professionals and families looking for a new home close to a variety of amenities.

**HURRY -  
LAST FEW PLOTS  
REMAINING**

Prices from  
**£260,000**  
or **£208,000**  
with Help to Buy\*



For more information call

**07778 966 732**

OR VISIT OUR WEBSITE



## Cestria II - Quayside

Chester CH1 4HJ

Early bird reservations are now being taken on our exclusive development of 24 new 2 bedroom apartments situated by the River Dee.

Ideal for professionals or couples, Cestria II - Quayside is ideally located for those who want to reside in the heart of Chester, close to everything this vibrant city has to offer.

**SALES &  
MARKETING SUITE  
NOW OPEN**

**TO RESERVE YOUR  
NEW HOME CALL  
07766 902013  
OR VISIT OUR WEBSITE**

Images are for illustrative purposes only. \* Terms and conditions apply. Please ask for details.

WATKIN JONES & SON LTD 55 Ffordd William Morgan, St Asaph Business Park, St Asaph, Denbighshire LL17 0JG

[watkinjoneshomes.co.uk](http://watkinjoneshomes.co.uk)





# COMMUNITY NEWS

Have Your Say - Tell Us & We'll Print It!  
Email us @: [info@love-chester.com](mailto:info@love-chester.com)



Chester Operatic Society perform their Christmas concerts,  
**It's Beginning to Look Like Christmas.**

Join us and relax for our seasonal selection of Christmas carols, both traditional and new, plus a selection of uplifting and toe-tapping festive songs.  
Tickets cost £10 and include a mince pie. To book tickets, call 01244 375662 or visit <https://www.ticketsource.co.uk/chesteroperatic>

## It's Beginning To Look Like Christmas

Fri 8<sup>th</sup> & Sat 9<sup>th</sup> December 2017 at 7:30pm

St.Mary's a Creative Space, Castle St, Chester.

A fabulous festive concert presented by  
Chester Operatic Society.

Join us and relax for our seasonal selection of Christmas carols both traditional and new, plus a selection of uplifting and toe-tapping festive songs.

Price - £10 (including a mince pie)

Call - 01244 375 662

Visit - [www.ticketsource.co.uk/chesteroperatic](http://www.ticketsource.co.uk/chesteroperatic)



## Bikes are not just for Christmas...



Cycling has seen a leap in popularity in recent years, following successes in the Olympics and the Tour de France. But it does not all have to be about speed, lycra and super lightweight bikes. It is a very convenient means of travelling locally, it is free, it improves your health and parking is a doddle! There is also the other side of cycling; exploring country lanes, finding cafe's and hidden surprises on your doorstep, coming face to face with wildlife. In Chester we have a wealth of lanes and destinations, and a local cycling club that can take you there. Chester CTC (part of Cycling UK) meet twice a month for Sunday rides, once a month for a ladies only Saturday morning ride, Summer Wednesday evening rides and other events in between, such as treasure hunt and freewheeling competitions. And we meet up and ride all year; so if you get a bike or new cycling stuff for Christmas, why not come along and meet us? In 2017 we have been to Eastham Ferry, Jodrell Bank, Maeshafn, Northwich, Erddig, Willington to name but a few; ladies rides have been to, amongst others, Wepre Park, Cotebrook, Tarporley and a weekend away to Kirkby Stephen.

Facebook - Chester Cycle Touring Club or Chester Fabulous Ladies Blogs -

[www.chestertcc.blogspot.com](http://www.chestertcc.blogspot.com) or [www.chesterfabulousladies.blogspot.com](http://www.chesterfabulousladies.blogspot.com)

Twitter - @fabulous\_ladies





Sanctuary Care

*'Keeping kindness at the heart of our care'*



## Upton Dene Residential and Nursing Home

Residential  Residential Dementia  Nursing

*Christmas*  
at

Upton Dene Residential  
and Nursing Home

*Join us for our festive events this Christmas...*

**Christmas Carol concert with Upton High School on  
Thursday 7 December from 2pm to 3pm**

**Christmas Fayre selling crafts and refreshments with an exciting raffle on  
Saturday 9 December from 2pm to 5pm**

**Festive afternoon tea in home's café area Monday 11 December  
from 2.30pm to 3.30pm**

**Carols with the Salvation Army Sunday 17 December from 3.30pm**

**Free exercise session Tuesday 19 December from 11.30am to 12.30pm**

**Caldecott Close, Upton, Chester CH2 1FD  
Tel: 01244 569 825**



## Hairdressing

### OPENING HOURS

MONDAY - SATURDAY

9AM - 6PM

OPEN LATE NIGHTS BY  
PRIOR ARRANGEMENT

OPEN 7 DAYS

THROUGHOUT DECEMBER

FREE PARKING OPPOSITE

Our salon here in Whitby Village offers bespoke bridal hair, cutting and colouring, and most importantly - attention to detail.

Stephen Blyth formally Artistic Director of Andrew Collinge Group.

*Salon chair available for rent.*



British  
Hairdressing  
Awards



2 Times  
Winner



**£5 OFF**

WITH THIS ADVERT - LC

12 CHESTER ROAD, WHITBY, ELLESMERE PORT CH65 6RU

**TEL: 0151 355 0001**

# STUART HENRY KITCHENS LTD

Multi Award Winning  
family run business with  
30 years experience.

Full 12 unit kitchen with  
appliances and accessories

**for £3500**

Excludes installation

**\*\*LIMITED TIME ONLY\*\***

Recently fitted by us  
for Mr & Mrs H  
in Bromborough



1 The Rake Precinct, Bromborough, Wirral CH62 7AD

26 Phone 0151 334 7775 | [www.stuarthenrykitchens.co.uk](http://www.stuarthenrykitchens.co.uk)







**Keeping the roof  
over your head™**

## **Covering Cheshire, Merseyside, Wirral & Surrounding Areas**

- 
- House Roof Renewals
  - Roof Re-Slates
  - Firestone EPDM Rubber Flat Roofs
  - Flat To Pitched Roof Conversions
  - Fascia, Soffit, & Gutter Renewal

## **Please Contact Us For A Free Quote**

 **08006344821**  **@robmcroof**

 **07960397021**  **info@rm-roofing.co.uk**

With a reliable, friendly and hard working team we can guarantee you a high standard of work with a very professional service. Our customer satisfaction rate is outstanding and we aim to keep those standards high. For photos of our work, reviews and more please visit our Facebook Page

**All Work Comes With A 10 Year Guarantee**



# Christmas on the Clwyds



Even though the shorter days of late autumn are with us, it's still great to get outdoors whenever possible. Pull on some stout boots, wrap up with a few layers, pack a flask and a portable lunch, then head off into the hills and feel the fresh, invigorating air on your face. Even in the darkest depths of winter, we're still, as a walking club, very much fit and raring to go, despite the distractions of Christmas shopping or the lure of a cosy fireside.

Our winter programme is now in full flow, offering a midweek hike every other Wednesday and at least two walks every Sunday. Fewer daylight hours and the risks posed by wintry weather in December and January mean that the usual Sunday 'A' walks in Snowdonia are curtailed for now. However, there's still plenty of opportunity for a good hike elsewhere in the region. The Clwydian Range, just over the border into Wales, is a short drive away from Chester and fantastic to head for if you fancy striding into the hills without travelling too far off the beaten track. On a clear day, you can see for miles from the summit of Moel Famau, the area's highest and most well-known peak. If you prefer somewhere less busy, the other hills along this range offer the same glorious panoramic views, but without the crowds. My favourite is Bryn Alyn, accessed from the large layby at Plymog, on the A494 Ruthin road near Llanferres. Grab an OS Explorer map of the area and pick out a route beside the River Alyn, along the old quarry track and up the grassy slope to the summit. Or let our club leaders do the hard work for you and come join one of our organised walks!

In winter, we drop our Tuesday evening walks and replace them with social get togethers with entertainment, as well as seasonal events like the Christmas Party and the President's Dinner. Unsurprisingly, events that include a food element are always very popular! One of the highlights of the Club's winter programme is an annual event that combines the great outdoors and a good hearty feast: the Christmas Walks and Dinner. The idea is that we have a choice of two walks one Sunday in December - one slightly tougher than the other - in an area where there is a hotel/restaurant handy for a group meal afterwards. This takes some coordination between walk leaders and our social committee, but things always seem to fall into place nicely. For the last couple of years, the event has taken place near Mold, a great destination for a winter hike and not too far to get to from Chester. In this area there is

an abundance of pleasant walks in the aforementioned Clwydian Range and at least one very nice hotel nearby for a Christmas meal. This year, one of our experienced leaders, Dave, will take a group onto Moel Famau and Foel Ffenlli, a 10-mile hike that promises fantastic vistas in all directions, weather permitting! The alternative is a slightly less strenuous 8-mile route that takes in Moel Findeg, one of the less lofty hills of the region, but which still offers panoramic views across Cheshire, the Dee Estuary, and North Wales - on a good day, of course! My husband and I are leading this walk, as it's an area we know very well, having hiked there many times. One thing is for sure - both groups will have several members sporting novelty Christmas hats, so if you happen to be walking in the Clwyds that day and think you've spotted reindeers, elves or even Santa himself, take a closer look - it's probably Chester Rambling and Hill Walking Club celebrating the festive season in their inimitable style!

Check out what we're up to by visiting our website: [www.chesterwalkingclub.com](http://www.chesterwalkingclub.com)

## CHESTER RAMBLING & HILL WALKING CLUB

We are a Chester-based walking club, offering up to 3 grades of walks on Sundays, and alternate Wednesdays, and a programme of short summer rambles on Tuesday evenings. The summer season also sees a flurry of camping activity, when we pack up our tents, hook up the caravans, book B & B's and cottages, and head off to destinations slightly further afield for a few days.

Led by experienced leaders, our Sunday and Wednesday walks last approx 6 hours, so bring picnic, flask and water. These hikes cover Snowdonia and North Wales, Cheshire, Shropshire, Lancashire and Derbyshire. Sorry - no dogs or under 18s allowed on our walks.

The club runs mid-week social evenings during the winter, including supper evenings, quiz nights and the ever popular Christmas party!

Why not come and join us on a trial basis without paying the fee?

Find out more by emailing [chesramclub@yahoo.com](mailto:chesramclub@yahoo.com) or head over to our website for more details: [www.chesterwalkingclub.com](http://www.chesterwalkingclub.com)





**MTS Psychotherapy**  
Moving forward

# Set yourself free

Are you struggling to cope?  
Anxiety or Depression?  
Relationship issues?  
Stress at work?

*Why not try Psychotherapy to help  
to get your life back.*



Call Manuela Surgeon on: 07952 656 331

UKCP Registered Adult Psychoanalytic Psychotherapist  
manuelasurgeon@gmail.com

**www.mtspsychotherapy.co.uk**

Enterprise House, Aber Park, Flint CH6 5EX

**HELPING YOU,  
HELP YOURSELF**





## BROWSERS

## EMPORIUM

[www.browsersemporium.com](http://www.browsersemporium.com)

It's an Aladdins Cave of Treasures

You name it and we've probably got it!





**All types of new & second-hand furniture & fittings to browse under one roof!**

**From bulbs to lights, door handles to doors & stools to tables!**



Hooton Works, Hooton, Wirral (Junction 5 - M53) off A41 to Chester Next to Corfe's)

**Tel: 0151 328 1467**

Open: Mon-Sat from 10.00am

Sunday 10:30am - 3:30pm



All credit cards accepted

# AutoReview

by **Tony Yates**

Keeping you motoring

## Suzuki SX4 S-Cross 1.4 Boosterjet SZ5 ALLGRIP (AT)



*The S-Cross first went on sale in October 2013 as Suzuki's first 'C' segment crossover model. Now, just over three years later, this major face lifted model has been introduced with a more distinctive and upright front end styling, along with a stronger and bolder road presence, slightly higher ground clearance and newly designed headlamps which all help provide a much sharper look. Also at the rear, newly designed LED rear combination lamps are used to provide a cleaner and more contemporary style.*

### **Power and Efficiency**

The 1.4-litre 140PS Direct Injection turbocharged (DITC) petrol engine is actually very compact and offers 220Nm of torque. Max speed comes

in at around 124mph and it will do 0-62mph in 10.2 seconds. I also managed a combined fuel consumption of 48.2mpg.

Suzuki's ALLGRIP system is available on SZ-T and SZ5 models, which gives you four driver-selectable modes for safe, enjoyable driving on variety of surfaces. You could also argue that four-wheel drive impacts on fuel efficiency – but Suzuki tells me that the ALLGRIP system enables CO2 emissions to be remarkably low for a four-wheel drive SUV.

### **On the Road**

I happen to like the way the S-Cross feels on the road. The steering is a little on the light side and it lacks in feel, but I am being very picky here as most people won't really notice this when using it day to day. The suspension is good and it gives you a decent ride, even when fully loaded. Also, the Suzuki happily gets a move on when the need arises and on the motorway it was



reasonably quiet at high speed.

The Suzuki ALL-GRIP system incorporates feed forward control that anticipates slippage based on road surface, throttle position, steering angle and other factors. So rather than reacting after grip is lost – it controls the vehicle to prevent grip being lost which results in greater stability.

#### **Design and Technology**

Some of the standard features fitted to the SZ-5 model I had on test included; ALLGRIP 4 wheel drive system, ABS with EBD & Brake Assist, ESP, Hill Hold Control, 7 airbags (driver, front passenger, side, curtain & driver's knee) DAB digital radio with USB socket and steering wheel controls, Navigation system, 4 speakers & 2 tweeters, Bluetooth integrated audio unit, Engine Auto Stop Start system Front & rear parking distance sensors, Rear parking camera, Cruise control with speed limiter, Dual zone automatic air conditioning, LED daytime running lights and 17" Alloy wheels (polished).

#### **To Sum Up**

The S-Cross is a decent car that does exactly what you need it to do. Also, when you need it to move your family and their belongings around – it can easily become the load slugger you need it to be with

very little effort. Plus, all Suzuki models are covered by a three-year/60,000-mile new vehicle warranty, one year AA Suzuki Assistance, providing 24-hour UK and European roadside assistance, recovery and associated services.

Price from: **£24,849**



# INTIMATEDETAIL

EXCLUSIVE VALETING AND AUTOMOTIVE DETAILING



**VOUCHERS AVAILABLE FOR CHRISTMAS GIFTS**

**INTIMATEDETAIL.CO.UK**

Professional Mobile Service

**07581 229 029**

Vehicle Detailing | Luxury Car Care | Upholstery and Carpet Cleaning  
Leather Cleaning and Protection | Hydrophobic Coatings | Paint Correction and Enhancements  
New Car Protection Packages | Soft Top Cleaning and Coating | Stone Chip Repair  
Skilled, Proven and Insured



ZevTech UK Ltd  
8 Water Street  
Liverpool  
L2 0RD



**ZEVTech**

Telephone: 03333 230 009

ZevTech UK Ltd,  
24th Floor, The Shard  
32 London Bridge St  
London SE1 9SG

**Is your business suffering from poor internet speeds?**

We can help your business with guaranteed upload and download speeds.  
Fibre and Wireless connections available.

Business Broadband Connections,  
VoIP, Mobiles, Landlines.

**10% DISCOUNT** - for Love Chester readers



[www.zevtechuk.co.uk](http://www.zevtechuk.co.uk)  
[Gareth@zevtech.co.uk](mailto:Gareth@zevtech.co.uk)



# ELITE ROOFING SERVICE

ALL ASPECTS OF ROOFING WORK UNDERTAKEN.

*A Local Friendly Service*



- FREE ROOF CHECKS
- SLATE, TILE & FLAT ROOFS
- CHIMNEYS
- ROOF MOSS
- SEAGULL SPIKES FITTED
- GUTTERS CLEARED
- ALL INSURANCE WORK UNDERTAKEN

• DISCOUNTS  
FOR SENIORS

**CALL NOW FOR  
A FREE QUOTE**



**Telephone: 01244 456447**

## Ask about our great new deals to advertise in 2018! Affordable advertising!

**CHEAPER ADVERTISING RATES THAN MOST NEWSPAPERS & OTHER LOCAL MAGAZINES!**

**FREE DESIGN OF YOUR ADVERT! FREE PHOTOGRAPHY!**

**Love Chester** the magazine of choice for all **local** businesses

Love Chester Magazine is delivered through:- Busy local high streets, our advertisers, local businesses, golf clubs, business centres, supermarkets, staff rooms, hotels, libraries, social clubs, garden centres, butchers, cafes, restaurants, bars, hairdressers, beauty salons, DIY stores, solicitors, opticians, take aways, churches, doctors, dentists, hospitals, council offices and office buildings with lots of staff!

We deliver to the following areas:- Chester City Centre, Handbridge, Boughton, Huntington, Christleton, Littleton, Vicars Cross, Hoole, Bache, Upton, Newton, Moston, Mollington, Blacon, Saughall, Saltney, Guilden Sutton, Mickle Trafford, Rowton, Waverton, Chester business park and Sealand Industrial Estate.

**www.love-chester.com**  

**ONCE YOU HAVE READ ME PLEASE PASS ME ON TO SOMEONE ELSE!**

Call: **0151 513 1279** or email: **info@love-chester.com**

# UPCOMING DATES & EVENTS IN DECEMBER 2017

## 3 December 2017 Chester - Santa Dash

Riverside Innovation Centre, Castle Drive, Chester, Cheshire, CH1 1SL

Day Times  
Sunday 10:00am

The Chester Santa Dash is celebrating its 7th year, starting at the Riverside Innovation Centre Building by the River Dee and taking in the best of the Chester City centre including the Eastgate Clock, Chester's famous cobbled streets and the beautiful Cathedral. This event offers a real unique and festive experience like none other. The Chester Santa Dash is 3.3km in total and is perfect for families and little ones taking part but open to everyone to get involved. There will be live bands performing Christmas songs along the route with some festive surprises too.

**Sign up today and don't miss out on this amazing event. Get your suit on and get dashing!**



## 7 December 2017 Winter Watch Parade

Starts at Forum Shopping Centre, Chester, Cheshire, CH1 2BY

Karamba Samba as the Winter Watch parades through Chester City Centre, lead by the Lord of Misrule! The parade will start at the Forum Shopping Centre and will continue around the city.



## 10 December 2017 Sunday Disco Party Night

Crowne Plaza Hotel Chester, Trinity Street, Chester, Cheshire, CH1 8BD  
Tel: 08719429162

Day Times  
Sunday 19:00 23:45

Sunday Disco Party Night  
Make your Sunday special this Christmas and visit the Crowne Plaza Hotel for their Sunday Night Disco. You will enjoy a wonderful two course dinner followed by a disco until midnight.

**Menu** - Roast turkey breast served with apricot and herb stuffing, chipolata wrapped in bacon, sea salt and thyme roasted potatoes and pan gravy. Served with roast root vegetables and buttered Brussels sprouts.

Traditional Christmas pudding with brandy sauce.

**£9.99 per person**



## 13 December 2017 Music Society Celebrity Concert

St Mary's Creative Space,  
St Mary's Hill, Chester, CH1 2DW  
Tel: 01244 383455

**Tickets £18**, including buffet, from Chester Visitor Information Centre; by telephone: 0333 666 3366; or online: [www.ticketsource.co.uk/](http://www.ticketsource.co.uk/) [chestermusicsociety](http://chestermusicsociety)



## 16 Nov 2017 - 20 Dec 2017 Chester Christmas Market, Lights Switch-On & Parade

Town Hall Square, Northgate Street, Chester, Cheshire, CH1 2HJ

Day	10:00	18:00
Monday	10:00	18:00
Tuesday	10:00	18:00
Wednesday	10:00	18:00
Thursday	10:00	20:00
Friday	10:00	19:00
Saturday	10:00	19:00
Sunday	10:00	18:00

Chester Christmas Market will be back in the heart of Chester from Thursday 16th November - Wednesday 20th December. The annual Christmas lights switch-on and the parade will also take place on the 16th November! Shoppers are in for a magical time at Chester Christmas Market, with over 70 traditional wooden chalets situated in the heart of Chester, all wrapped around a sparkling Christmas tree.



## 1 Dec - 29 December 2017 Friday Night Comedy Christmas Special

Alexander's Live, Rufus Court,  
Chester, Cheshire, CH1 2JW  
Tel: 01244 401402

**Tickets £15**  
Friday 20:00 22:30





# The Live Rooms

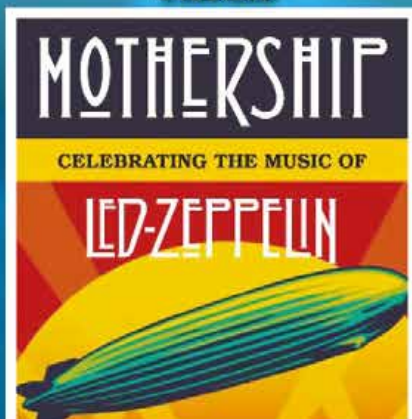
The Live Rooms, Station Road, Chester, CH1 3DR  
[www.theliverooms.com/events/](http://www.theliverooms.com/events/)



YOUR GUIDE TO  
WHAT'S ON

20  
17  
**DECEMBER**

## **Mothership Led Zeppelin Tribute**



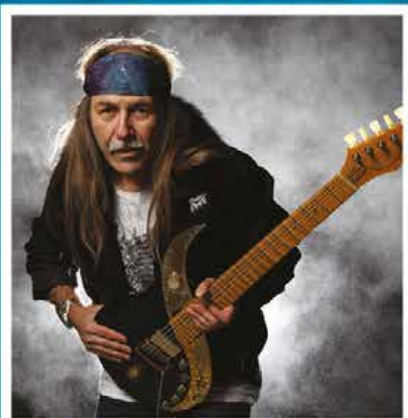
Friday 1st December - 7pm, £10

## **Pet Shop Boys Tribute**



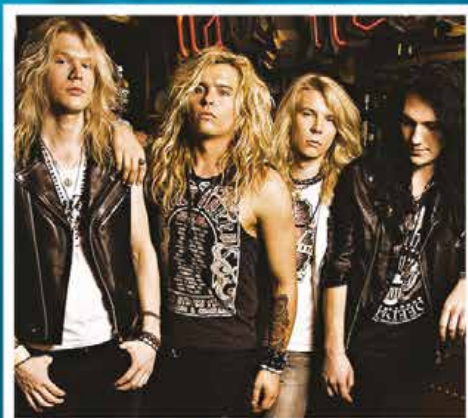
Saturday 9th December - 7pm, £10

## **Uli Jon Roth**



Wed 6th December - 7pm, £20

## **Santa Cruz**



Wednesday 6th December - 7pm, £20

The Live Rooms is Chester's newest and largest independent live music venue and nightclub. Our main room has hosted some of the biggest names in music from a diverse range of genres, whilst our side room provides an ideal space for smaller, more intimate shows. There is also an upstairs area which features a balcony overlooking the main room, a VIP bar and numerous seating areas. 35

# PLEASE SUPPORT LOCAL CHARITIES

This page is dedicated **FREE** to all registered Charities who wish to advertise.

**NHS**

Countess of  
Chester Hospital  
NHS Foundation Trust

## Macmillan Cancer Support and Information Centre

Countess of Chester Hospital

**WE ARE  
MACMILLAN.  
CANCER SUPPORT**

Questions about cancer?  
Come and talk to us

Based in the  
main corridor



A free confidential drop in service for anyone affected by cancer. If you are looking to reduce the risk of developing cancer, have a diagnosis of cancer, are living with the consequences following treatment or you are a carer, relative, friend or health care professional please call in or contact us.

### We can help with

- Emotional support for anyone affected by cancer
- Literature and information on all aspects of living with cancer
- The opportunity to discuss treatments, side effects and other cancer related issues
- Links to clinical teams
- Access to short courses for those living with and beyond cancer
- Cancer Awareness, Education and Health and Wellbeing Events
- Links and referral to national, local and voluntary services and support
- Signposting to self-help and support groups
- Access to Pampering Therapy (Look Good Feel Better) and Headstrong for those experiencing hair loss
- Referrals to complementary therapies for patients and for carers
- Access to financial advice and Macmillan grants
- Information and support provided face to face, by phone and by email

Telephone: 01244 364948

Monday to Friday 09:30am – 16:30pm

Email: [cancer.support@nhs.net](mailto:cancer.support@nhs.net)

Or contact the Macmillan Support line free on 0808 808 00 00



@COCHMacmillan



# AN *Elegant* HOLIDAY FEAST



**T**here is no time like the holiday season to get together and make memories with family and friends. Nothing brings people together quite like an elegant meal featuring a standout main dish – an exceptionally prepared Entrée that pays true homage to the season and all that you celebrate. This focal point dish should not only look delightful, but needs to also be a masterful presentation of mouthwatering flavour to keep your loved ones gathered around the table.

## Prime Rib Roast with Rosemary and Thyme au Jus

**Serves: 10-14**

**Prep time: 30 minutes**

**Total cook time: 3 hours, 50 minutes**

- 6 pound Steaks Bone-In Prime Rib Roast
- 3 tablespoons olive oil
- 1/2 cup Steaks Private Reserve Rub
- 5 carrots, chopped into 1-inch pieces
- 5 celery stalks, chopped into 1-inch pieces
- 1 medium onion, chopped into 1-inch pieces
- 1 1/2 cups red wine
- 3 cups low-sodium beef broth
- 1 1/2 teaspoons fresh rosemary, finely chopped
- 1 1/2 teaspoons fresh thyme, finely chopped

Thaw roast completely (3-4 days for 6-pound roast) in refrigerator before cooking.

Heat oven to 250 F. Remove roast from packaging and pat dry with clean paper towels.

Coat outside of roast with olive oil and liberally season with rub. Place carrots, celery and onion in even layer on bottom of large roasting pan to catch beef drippings.

Place roast in roasting pan on elevated wire rack. Sprinkle any leftover rub on roast to ensure a generous coating.

Roast until roast reaches an internal temperature of 125 F (for medium-rare), approximately 3 hours for 6-pound roast.

Remove roast from oven and let rest 20-30 minutes. Meanwhile, heat broiler to high, with rack positioned for roast to sit about 4 inches from heating element.

After roast has rested, place in oven under broiler, fat side up, about 5 minutes to brown roast.

Remove pan from oven. Remove wire rack with roast from pan and place on carving board. Skim fat from pan, if necessary.

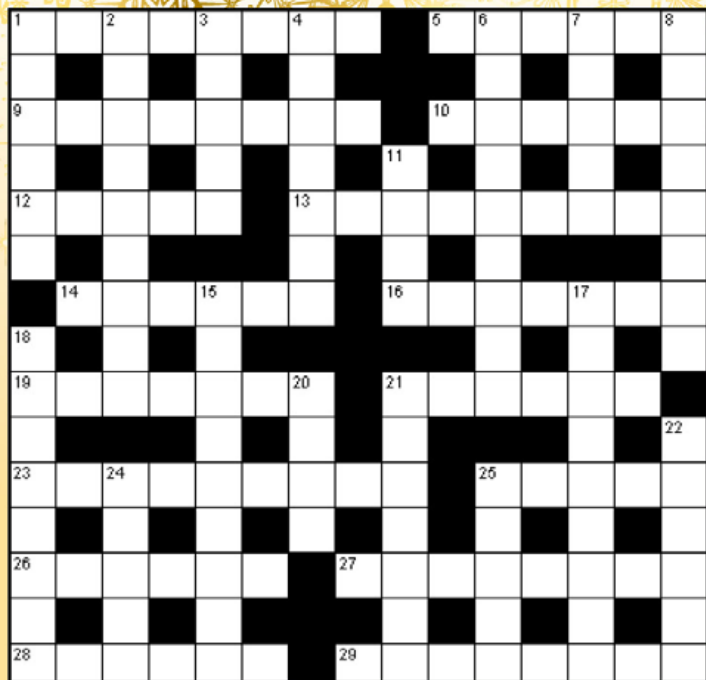
Place pan on top of stove over two burners set on high heat. Add wine to pan drippings and cook over high heat until reduced by half, releasing drippings on bottom of pan with wooden spoon or whisk. Add beef broth and cook until reduced by half again.

Whisk or stir in rosemary and thyme. Strain out vegetables and pour au jus into serving vessel.

Slice roast and serve with au jus.



# PUZZLE CORNER



## Down

1. Hurting (6)
2. Extremely funny (9)
3. Suite (5)
4. Temporary housing (7)
6. Scenery (9)
7. Desert plants (8)
8. On tenterhooks (8)
11. At peace (4)
15. Attaché case (9)
17. Profitable (9)
18. Counsel (8)
20. A girl's toy (4)
21. Ask someone to marry you (7)
22. Canadian two dollar coin (6)
24. Reddish (5)
25. Ruler or chieftain (5)

## Across

1. A short pithy saying (8)
5. Locations (6)
9. Sacred (8)
10. Noshes (6)
12. Geeks (5)
13. Occur (9)
14. Terrorist (6)
16. A childhood disease (7)
19. Annul (7)
21. Sermonize (6)
23. A large, flat, thin case (9)
25. San Antonio fort (5)

26. Vampires (6)
27. Funny guy (8)
28. An armless couch (6)
29. Backside (8)

## Sudoku Puzzle

How to play: The numbers 1 through 9 will appear once only in each row, column, and 3x3 zone. There are 9 such zones in each sudoku grid.

There is only one correct solution to each sudoku. Good luck!

Difficulty level: **Hard.**

Solutions can be found on our website:  
[www.love-chester.com](http://www.love-chester.com)

								2
	4	7			2			
				6	9	8		
		4				6		9
				8				5
9				1	5	2		
	9					1	2	
3						9		
2		6			7	4		





**We supply and install coloured glass splashbacks.**

**\*\*Coming soon new sparkle and marble effects\*\***



## BUILDING

*We understand the importance of achieving a customers vision and needs.*

*Every project is completed to the highest quality and customer satisfaction is imperative.*

*We aim to give customers confidence that we will keep disruption to a minimum and always work within a safe, clean and tidy environment.*

## GLAZING

*We are professional installers of windows, doors, bi folds and frameless glass extensions.*

*Elliott Build & Glaze Ltd is a Fensa registered company and we are able to provide a 10 year insurance backed guarantee.*

## PLANNING

*From first contact with the customer to completion of the project, Elliott Build & Glaze Ltd can provide all services required to meet your needs, from full architectural design to the final fitting of the flooring. We aim make this experience as enjoyable and stress free as possible.*



**T: 0151 336 6925**



**[www.elliottbuildandglazeld.co.uk](http://www.elliottbuildandglazeld.co.uk)**

Email: [elliottbuildandglazeld@live.com](mailto:elliottbuildandglazeld@live.com)

Elliott Build & Glaze Ltd is a trading name of S R Elliott Build & Glaze Ltd.





from this

**Winter  
Discounts  
Now Available**  
Conversions from  
only **£999**



to this

FREE  
10 YEAR  
INSURANCE  
BACKED  
GUARANTEE

WIRRAL'S  
No 1  
ROOF  
CONVERSIONS

**10% OFF**  
As an early present  
from us to you!

Lightweight roofing system

Let Concept Conservatories turn your existing conservatory  
into an all year round room to enjoy from **£999.00**.

\*Discount is subject to a survey and a signed confirmed booking for installation.

**FREE QUOTATIONS • NO CALL OUT FEE • OAP DISCOUNTS**



**CONCEPT  
CONSERVATORIES**

Your dream room is our reality

**0151  
363 6844**



**Waterworks Lane, Hooton, Wirral, Cheshire CH66 7NL**

Part of Concept Room Creations Limited